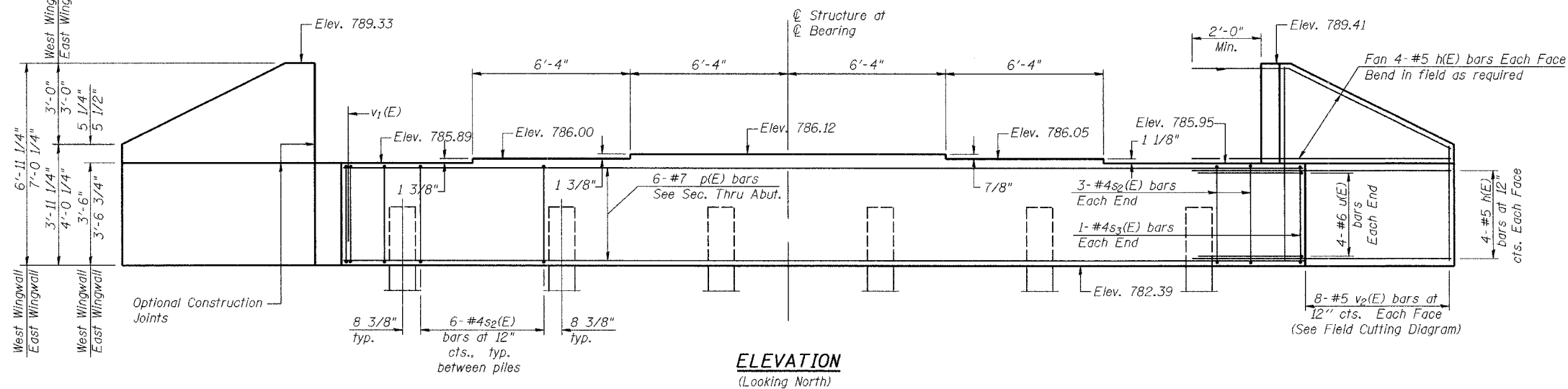


STATE OF ILLINOIS
DEPARTMENT OF TRANSPORTATION

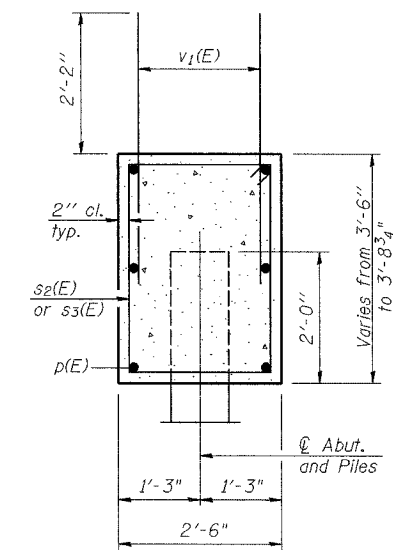
ROUTE NO.	SECTION	COUNTY	TOTAL SHEETS	SHEET NO.
FAP 553	125 VBR-1	DEKALB	55	25
FED. ROAD DIST. NO. 7		ILLINOIS	FED. AID PROJECT-	

Contract #64858

Notes: Four steps monolithically with cap.
Reinforcement bars designated (E)
shall be epoxy coated.

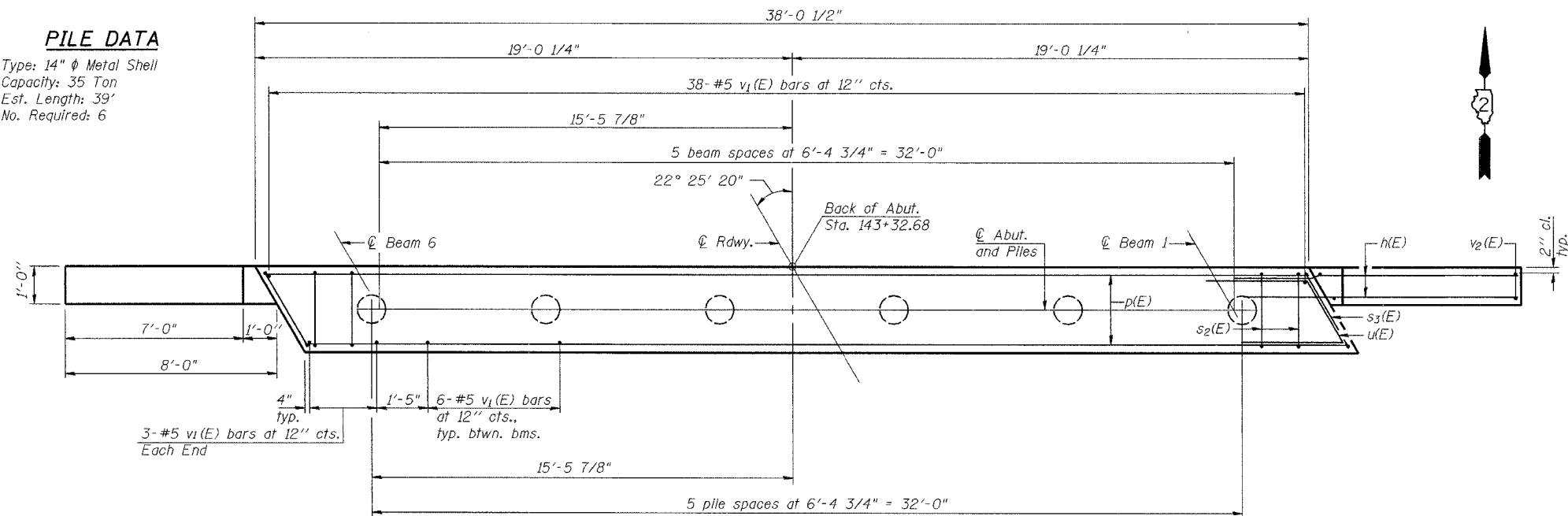


ELEVATION
(Looking North)



SEC. THRU ABUT.

PILE DATA
Type: 14" ϕ Metal Shell
Capacity: 35 Ton
Est. Length: 39'
No. Required: 6



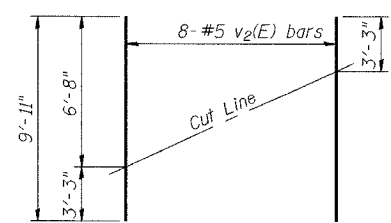
PLAN

BILL OF MATERIAL

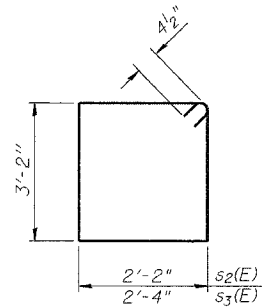
Bar	No.	Size	Length	Shape
h(E)	32	#5	9'-9"	—
p(E)	6	#7	37'-9"	—
s2(E)	36	#4	11'-5"	□
s3(E)	2	#4	11'-9"	□
u(E)	8	#6	9'-3"	∩
v1(E)	74	#5	4'-4"	—
v2(E)	16	#5	9'-11"	—
Concrete Structures		Cu. Yd.	15.6	
Reinforcement Bars, Epoxy Coated		Pound	1690	
Structure Excavation		Cu. Yd.	29	
Furnishing Metal Pile Shells 14 Inch		Foot	234	
Driving and Filling Shells		Foot	234	

DESIGNED	JDA
CHECKED	JKC
DRAWN	ARR
CHECKED	JKC

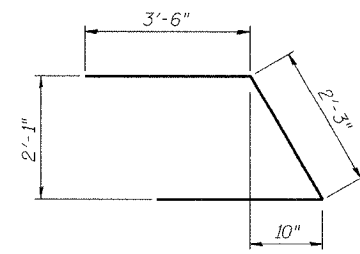
AI-L 10-22-04



FIELD CUTTING DIAGRAM
Order v2(E) full length. Cut as shown and use remainder of bars in opposite face.



BARS s2(E) & s3(E)



BAR u(E)

NORTH ABUTMENT
IL RTE 72 OVER
IOWA CHICAGO & EASTERN RAILROAD
FAP ROUTE 553
SECTION 125VBR-1
DEKALB COUNTY
STA. 144+14.40
SN 019-0047