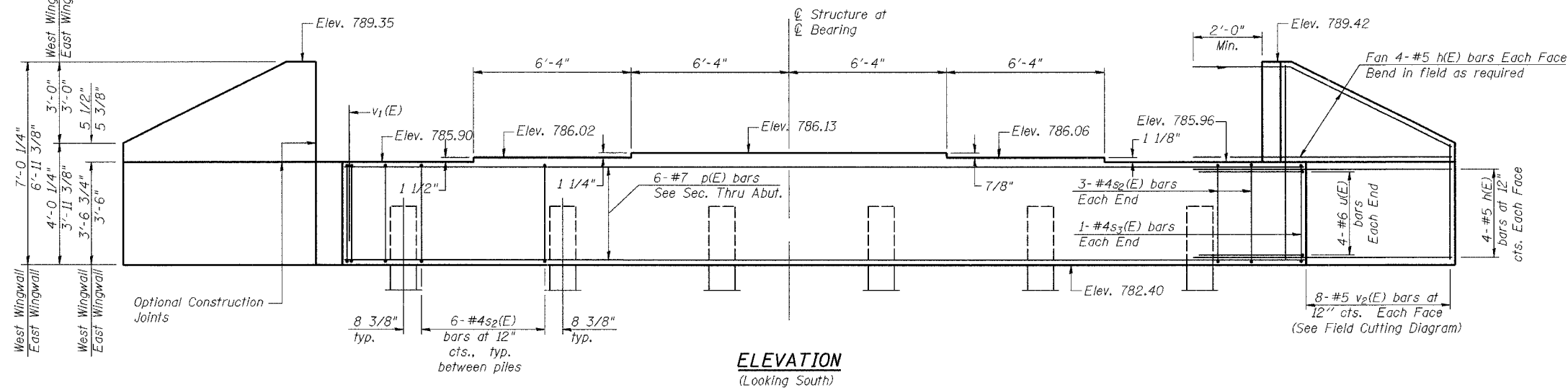


STATE OF ILLINOIS
DEPARTMENT OF TRANSPORTATION

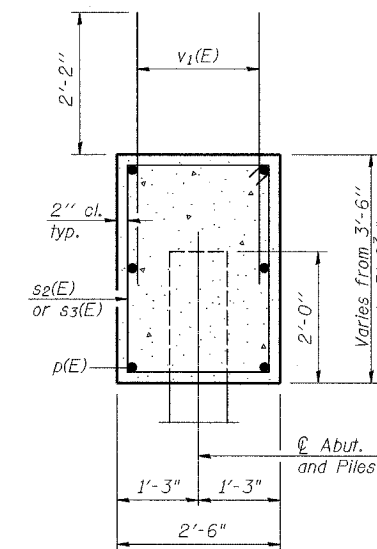
ROUTE NO.	SECTION	COUNTY	TOTAL SHEETS	SHEET NO.	SHEET NO. 11 20 SHEETS
FAP 553	125 VBR-1	DEKALB	55	26	
FED. ROAD DIST. NO. 7		ILLINOIS	FED. AID PROJECT-		

Contract #64858

Notes: Pour steps monolithically with cap.
Reinforcement bars designated (E)
shall be epoxy coated.



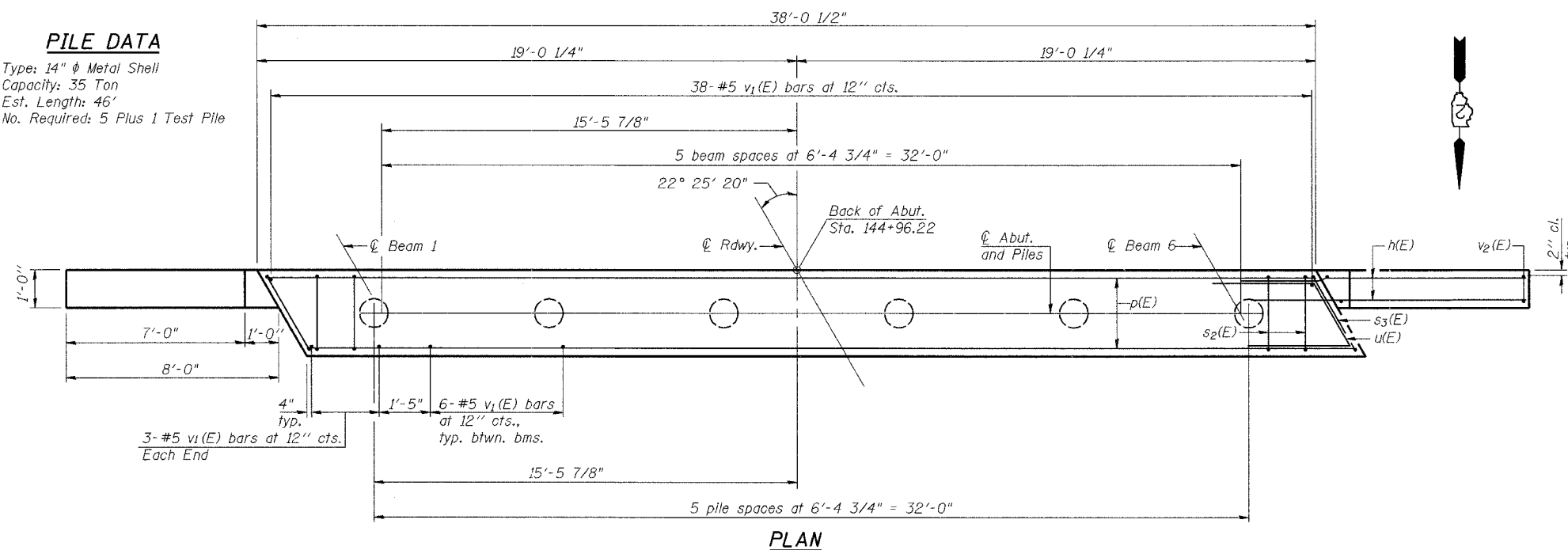
ELEVATION
(Looking South)



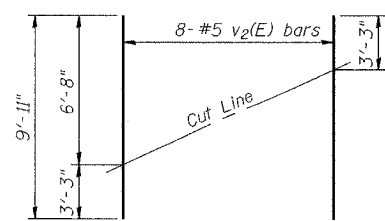
SEC. THRU ABUT.

PILE DATA

Type: 14" ϕ Metal Shell
Capacity: 35 Ton
Est. Length: 46'
No. Required: 5 Plus 1 Test Pile

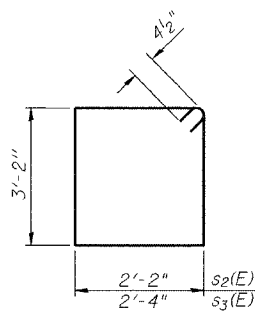


PLAN

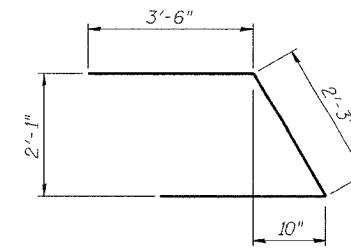


FIELD CUTTING DIAGRAM

Order $v_2(E)$ full length. Cut as shown and use remainder of bars in opposite face.



BARS $s_2(E)$ & $s_3(E)$



BAR $u(E)$

BILL OF MATERIAL

Bar	No.	Size	Length	Shape
$h(E)$	32	#5	9'-9"	—
$p(E)$	6	#7	37'-9"	—
$s_2(E)$	36	#4	11'-5"	□
$s_3(E)$	2	#4	11'-9"	□
$u(E)$	8	#6	9'-3"	▤
$v_1(E)$	74	#5	4'-4"	—
$v_2(E)$	16	#5	9'-11"	—
Concrete Structures		Cu. Yd.	15.6	
Reinforcement Bars, Epoxy Coated		Pound	1690	
Structure Excavation		Cu. Yd.	31	
Furnishing Metal Pile Shells 14 Inch		Foot	230	
Driving and Filling Shells		Foot	230	
Test Pile Metal Shells		Each	1	

SOUTH ABUTMENT
IL RTE 72 OVER
IOWA CHICAGO & EASTERN RAILROAD
FAP ROUTE 553
SECTION 125VBR-1
DEKALB COUNTY
STA. 144+14.40
SN 019-0047

DESIGNED	JDA
CHECKED	JKC
DRAWN	ARR
CHECKED	JKC

AI-L 10-22-04