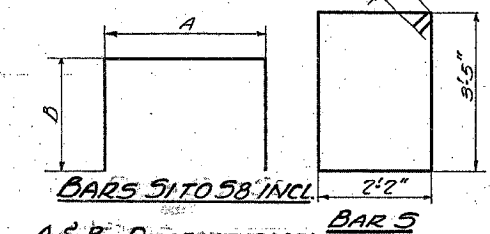
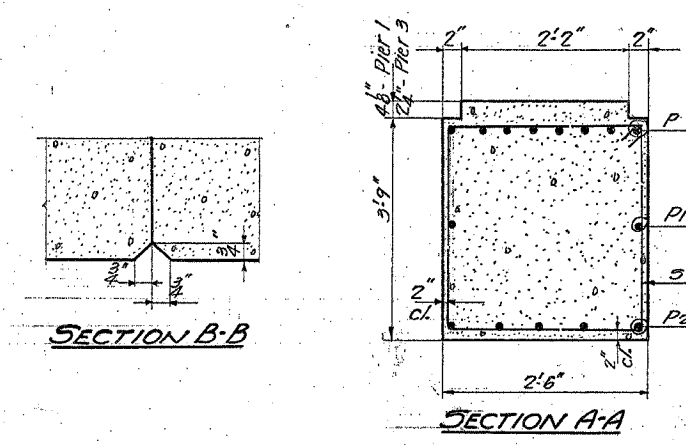
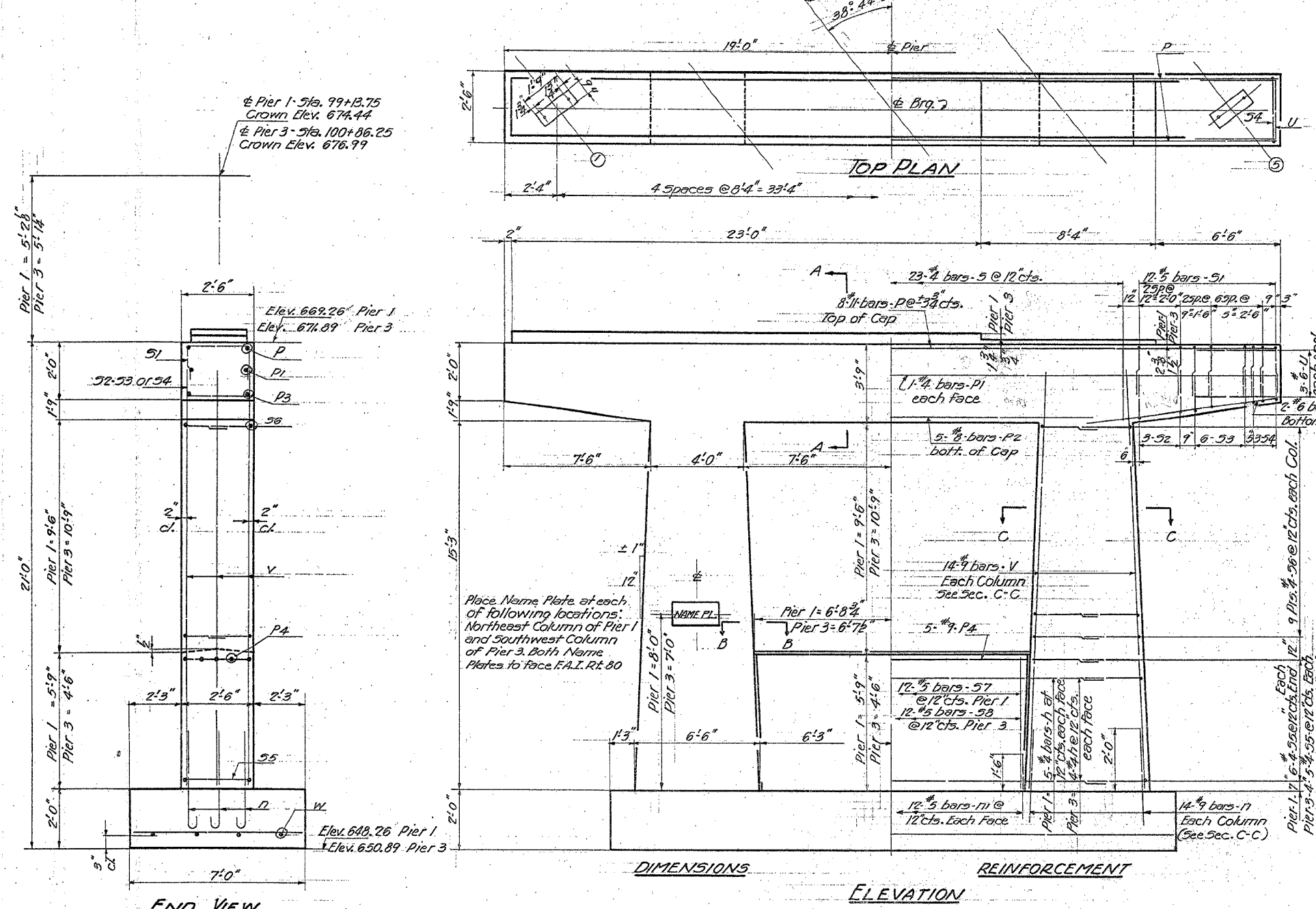


STATE OF ILLINOIS
DEPARTMENT OF PUBLIC WORKS & BUILDINGS
DIVISION OF HIGHWAYS

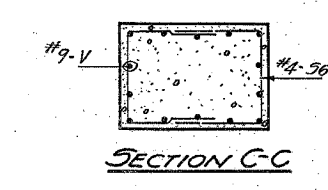
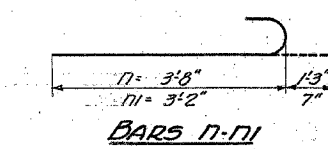
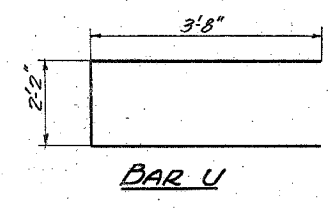


A & B DIMENSIONS

BAR	A	B
51	2'-2"	1'-9"
52	2'-2"	2'-8"
53	2'-2"	2'-0"
54	2'-2"	1'-4"
55	2'-2"	4'-0"
56	2'-2"	3'-6"
57	2'-2"	5'-7"
58	2'-2"	4'-4"

BILL OF MATERIAL

BAR	NO.	SIZE	LENGTH	SHAPE
H	18	#4	2'-0"	
I	56	#9	4'-11"	
II	48	#5	3'-9"	
P	16	#11	3'-9"	
P1	8	#4	1'-3"	
P2	10	#8	2'-0"	
P3	8	#6	8'-9"	
P4	10	#9	2'-0"	
S	46	#4	12'-0"	
51	48	#5	5'-8"	
52	12	#5	7'-6"	
53	24	#5	6'-2"	
54	12	#5	4'-10"	
55	22	#4	10'-2"	
56	72	#4	9'-2"	
57	12	#5	13'-4"	
58	12	#5	10'-10"	
U	12	#6	7'-8"	
V	56	#9	16'-9"	
t	56	#5	8'-9"	
W	8	#5	2'-5"	

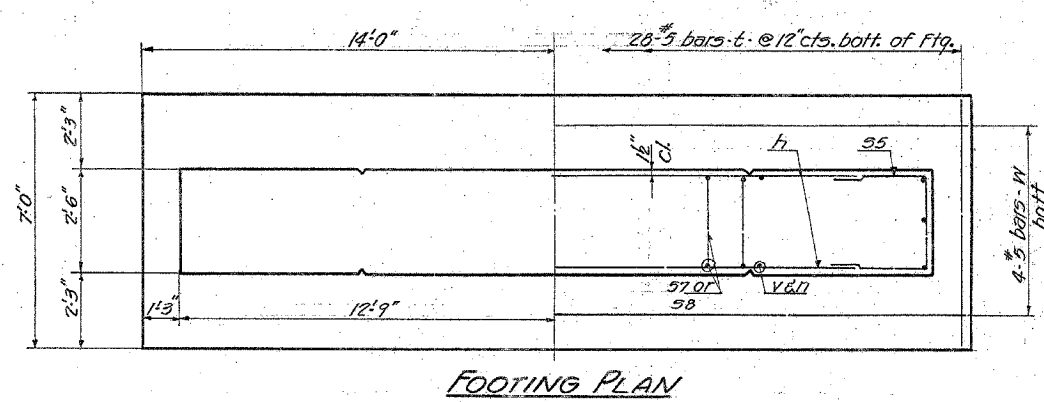


Note: All edges shall have standard 3/4 chamfer, except footing

Max. Footing Pressure 1.8 Tons/sq'

DESIGNED: [Signature]
CHECKED: [Signature]
DRAWN: [Signature]
CHECKED: [Signature]

EXAMINED: [Signature] FEB 18 1961
PASSED: [Signature]
APPROVED: [Signature] CHIEF HIGHWAY ENGINEER



* FOR INFORMATION ONLY

PIERS 1 & 3
F.A.I. Rt. 80 - SEC. 06-41B-1
BUREAU COUNTY
STATION 1038+66.70