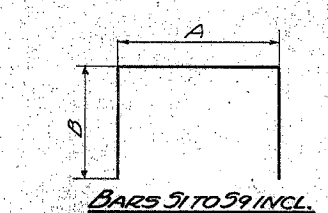
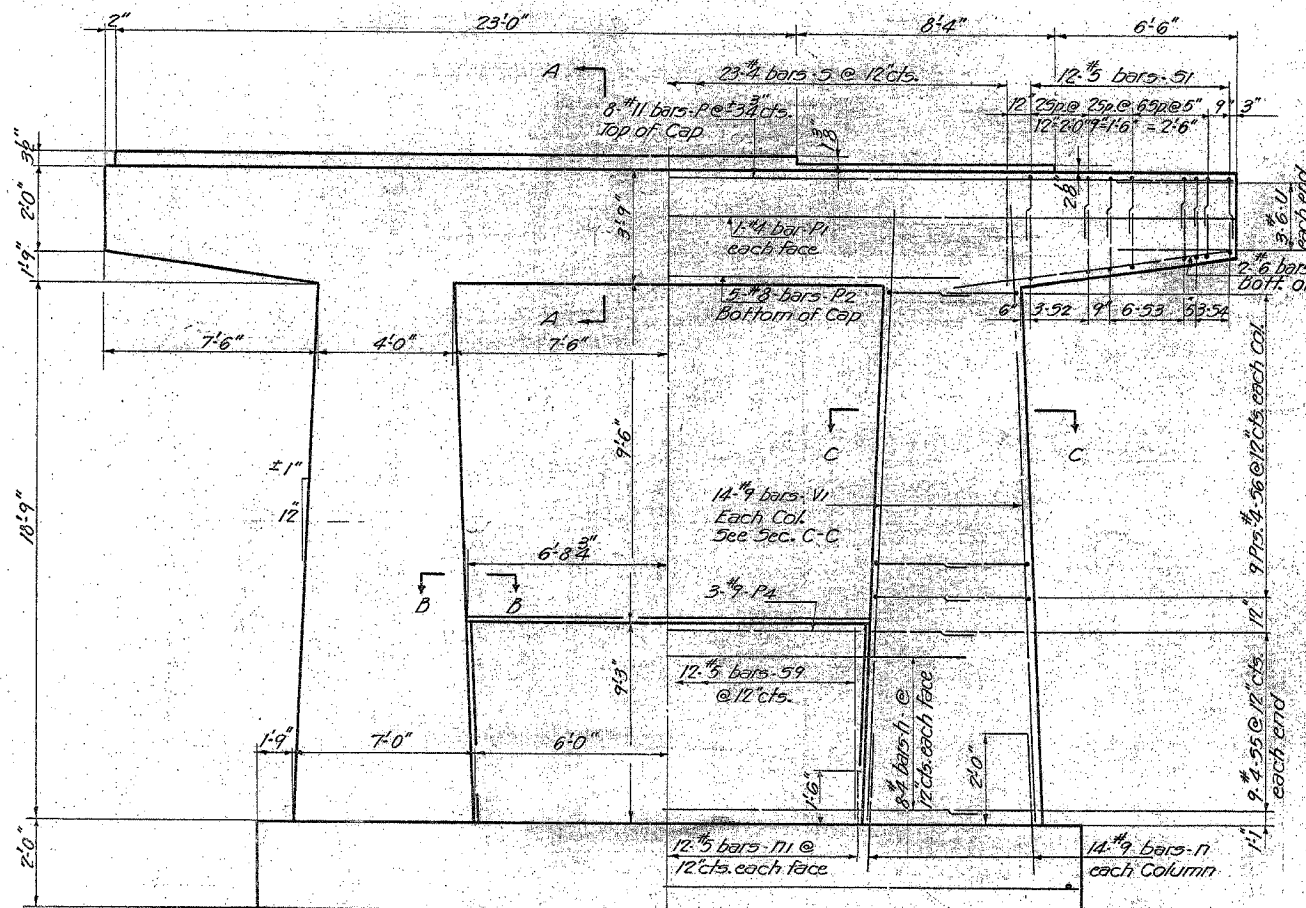
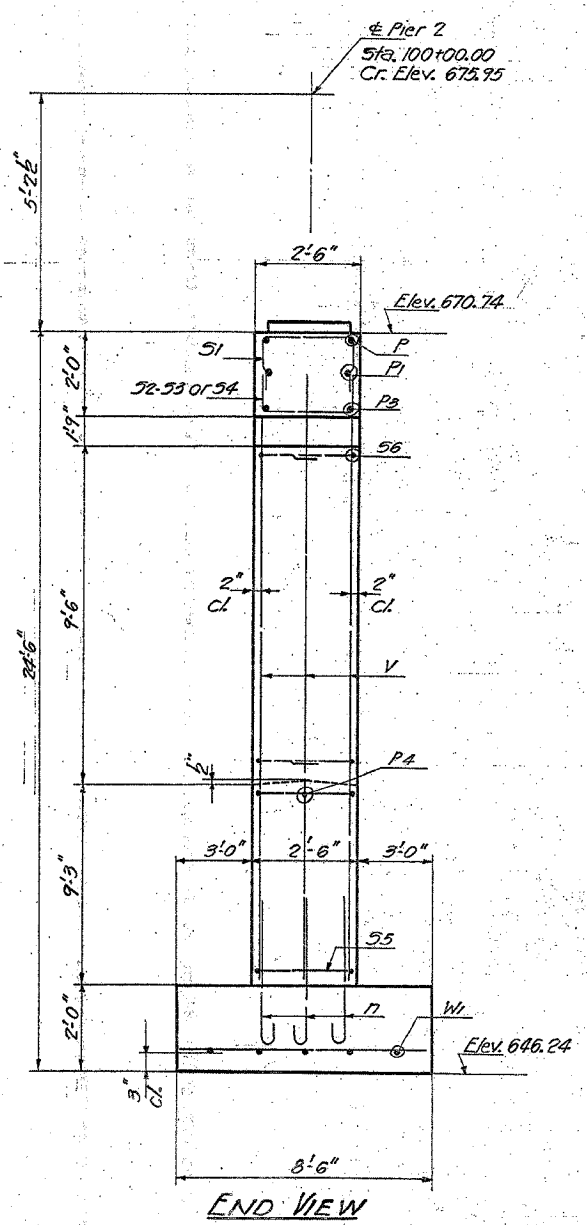
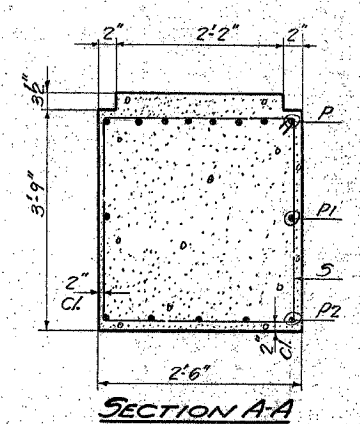
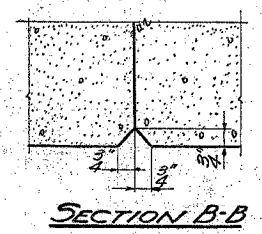
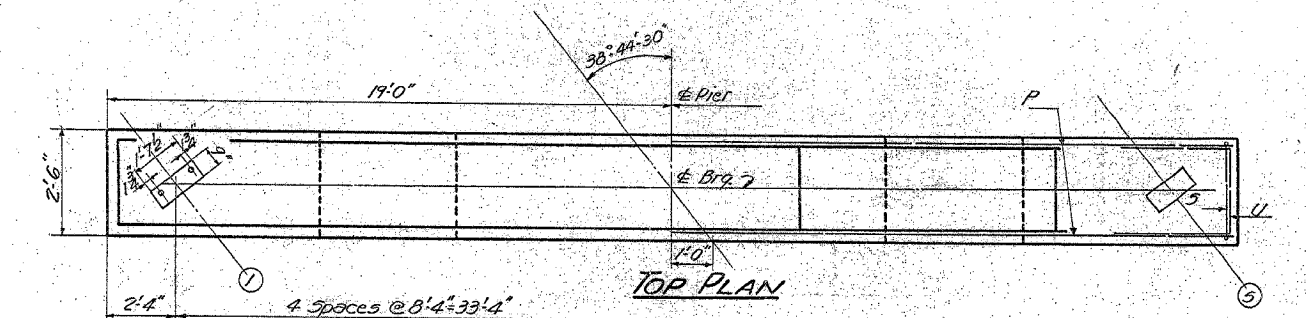
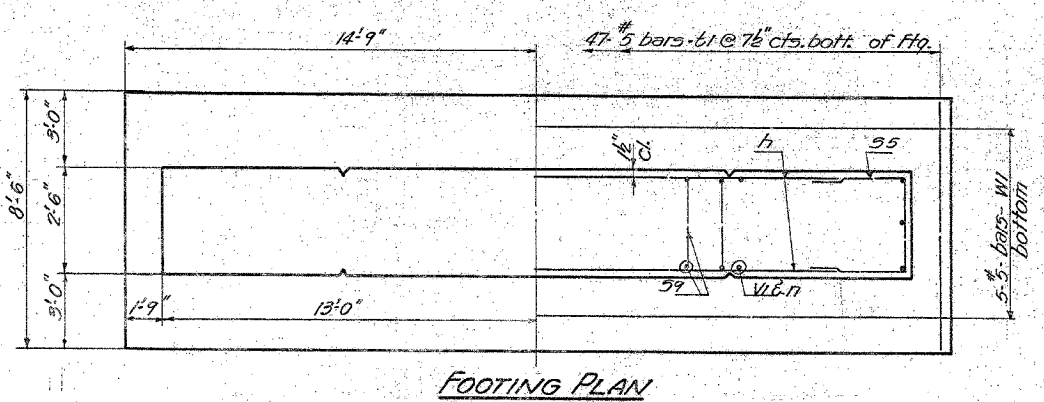
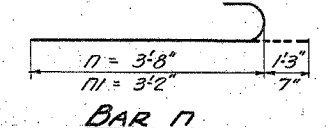
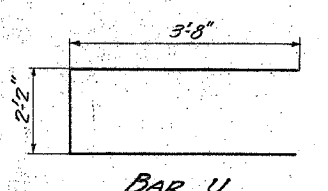
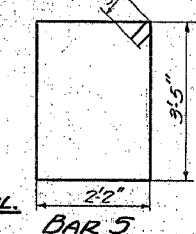


STATE OF ILLINOIS  
DEPARTMENT OF PUBLIC WORKS & BUILDINGS  
DIVISION OF HIGHWAYS



**A & B DIMENSIONS**

BAR	A	B
S1	2'-2"	1'-9"
S2	2'-2"	2'-8"
S3	2'-2"	2'-0"
S4	2'-2"	1'-4"
S5	2'-2"	4'-0"
S6	2'-2"	3'-6"
S9	2'-2"	4'-0"

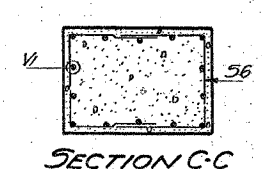


**BILL OF MATERIAL**

BAR	No.	SIZE	LENGTH	SHAPE
h	16	#4	2'-10"	
n	28	#9	4'-11"	
m	24	#5	3'-9"	
P	8	#11	37'-9"	
P1	4	#4	19'-3"	
P2	5	#8	21'-0"	
P3	4	#6	8'-9"	
P4	3	#9	21'-0"	
S	23	#4	12'-0"	
S1	24	#5	8'-8"	
S2	6	#5	7'-6"	
S3	12	#5	6'-2"	
S4	6	#5	4'-10"	
S5	18	#4	10'-2"	
S6	36	#4	9'-2"	
S9	12	#5	20'-2"	
U	6	#6	9'-6"	
V	28	#9	20'-0"	
W	47	#5	8'-3"	
W	5	#5	29'-0"	

Class - X Concrete Cu Yds. 61.2  
Reinforcement Bars Lbs. 6,810

\* FOR INFORMATION ONLY



PIER 2  
F.A.I. RTE. 80-500-06-4HB-1  
BUREAU COUNTY  
STATION 1038+66.70

DESIGNED *W. A. Brownell*  
CHECKED *R. Kowal*  
DRAWN *M. Miller*  
CHECKED *EK*

EXAMINED *W. G. Bannan*  
PASSED *W. G. Bannan*  
APPROVED *R. R. Pantelone*

FEB 18 1961

Max. Hq. Pressure 2.6 Tons/ft<sup>2</sup>