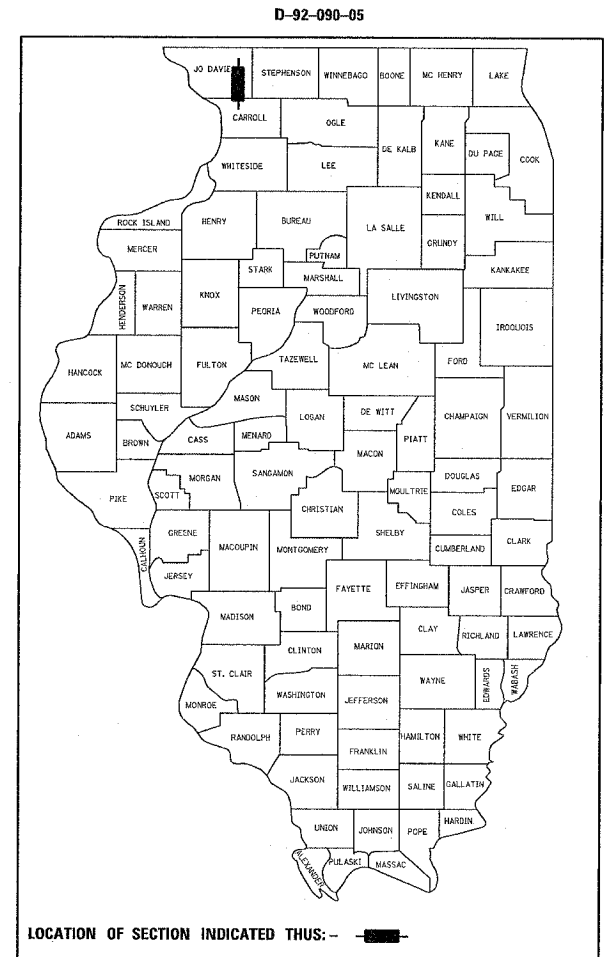


F.A.P. RTE.	SECTION	COUNTY	TOTAL SHEETS	SHEET NO.
642	11BR-8	JODAVIESS	45	1

(10BR-3)D

STATE OF ILLINOIS
DEPARTMENT OF TRANSPORTATION
DIVISION OF HIGHWAYS
PROPOSED
HIGHWAY PLANS

FAP ROUTE 642 (IL 78)
SECTION (10BR-3)D & 11BR-8
PROJECT
JODAVIESS COUNTY
C-92-045-06



PLANS ENGINEER
ROBERT WAGNER

SQUAD LEADER
MIKE YUSEF
(815) 284-5343

PROJECT ENGINEER
THOMAS HALLA
PHONE: (815) 284-5993

INDEX OF SHEETS

1	COVER SHEET
2-3	SUMMARY OF QUANTITIES
4	GENERAL NOTES
5-6	TYPICAL SECTIONS
7	BUTT-JOINT DETAILS
8-9	SCHEDULE OF QUANTITIES
10-11	HORIZONTAL & VERTICAL CONTROL
12-13	ROADWAY PLAN SHEETS
14-17	STAGING DETAILS
18	EROSION CONTROL DETAIL
19-27	BRIDGE PLAN AND DETAILS FOR PLUM RIVER (SN # 043-0040)
28-39	BRIDGE PLAN AND DETAILS FOR DAVIS CREEK (SN # 043-0042)
40	DELINEATOR AND POST (37.4)
40	WITNESS MARKER FOR PERMANENT SURVEY MARKERS TYPE 2 (38.4)
40	INFORMATIONAL WARNING SIGN (FOR NARROW TRAVEL LANES) 39.4
40	STOP LINE FOR TEMPORARY SIGNAL (99.4)
41-42	TYPICAL PAVEMENT MARKINGS (41.1)
43-45	CROSS SECTIONS

STATE STANDARDS

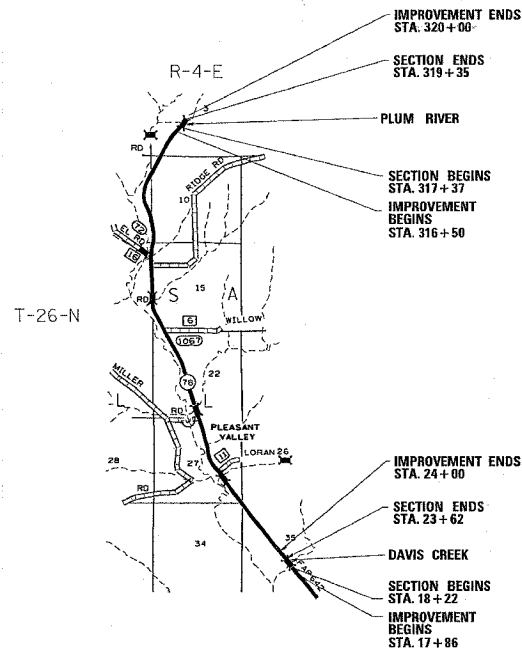
001001	AREAS OF REINFORCEMENT REBARS
001006	DECIMAL OF AN INCH AND A FOOT
280001-02	TEMPORARY EROSION CONTROL SYSTEMS
420001-06	PAVEMENT JOINTS
515001-02	NAME PLATE FOR BRIDGES
542401	END SECTION, METAL, FOR PIPE CULVERT
630001-05	STEEL PLATE BEAM GUARDRAIL
630301-03	SHOULDER WIDENING FOR TYPE 1 (SPECIAL) GUARDRAIL TERMINALS
631032-01	TRAFFIC BARRIER TERMINAL, TYPE 6A
635001	DELINEATORS
635006-02	REFLECTOR AND TERMINAL MARKER REPLACEMENT
635011-01	REFLECTOR MARKER AND MOUNTING DETAILS
667101	PERMANENT SURVEY MARKERS
701006-02	TYPICAL APPLICATION OF TRAFFIC CONTROL DEVICES
701201-02	TYPICAL APPLICATION OF TRAFFIC CONTROL DEVICES
701301-02	TYPICAL APPLICATION OF TRAFFIC CONTROL DEVICES
701311-02	TYPICAL APPLICATION OF TRAFFIC CONTROL DEVICES
701321-08	TYPICAL APPLICATION OF TRAFFIC CONTROL DEVICES
701326-02	TYPICAL APPLICATION OF TRAFFIC CONTROL DEVICES
702001-05	TRAFFIC CONTROL DEVICES
704001-02	TEMPORARY CONCRETE
720011	METAL POSTS FOR SIGNS, MARKERS & DELINEATORS
780001-01	TYPICAL PAVEMENT MARKINGS
781001-02	TYPICAL APPLICATIONS RAISED REFLECTIVE PAVEMENT MARKERS
886001	DETECTOR LOOP INSTALLATIONS
886006	TYPICAL LAYOUT FOR DETECTION LOOPS

FULL SIZE PLANS HAVE BEEN PREPARED USING STANDARD ENGINEERING SCALES. REDUCED SIZED PLANS WILL NOT CONFORM TO STANDARD SCALES. IN MAKING MEASUREMENTS ON REDUCED PLANS, THE ABOVE SCALES MAY BE USED.

J.U.L.I.E.
 JOINT UTILITY LOCATION INFORMATION FOR EXCAVATION
 1-800-892-0123

JODAVIESS COUNTY
 PLEASANT VALLEY TOWNSHIP, SECTION 3 & 35, T. 26-N. & R-4-E.

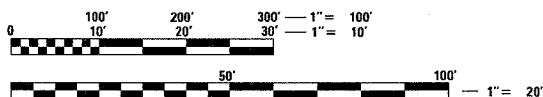
CONTRACT NO. 64B27



-DAVIS CREEK (SN#043-0042) INCLUDES THE REMOVAL AND REPLACEMENT OF SUPERSTRUCTURE ON BRIDGE CARRYING IL 78 OVER DAVIS CREEK WITH GUARDRAIL UP DATES

-PLUM RIVER (SN# 043-0040) WILL INCLUDE ONLY A NEW CONCRETE DECK OVERLAY

GROSS LENGTH OF SECTION = 738 FEET = .014 MILES
NET LENGTH OF SECTION = 738 FEET = .014 MILES



STATE OF ILLINOIS
DEPARTMENT OF TRANSPORTATION
DIVISION OF HIGHWAYS

SUBMITTED December 30th 20 05

Gregory Z. Montague
 DEPUTY DIRECTOR OF HIGHWAYS, REGION ENGINEER

February 3, 20 06
Mike Nire
 ENGINEER OF DESIGN AND ENVIRONMENT

February 3, 20 06
Milton R. Sees, P.E.
 DIRECTOR OF HIGHWAYS, CHIEF ENGINEER

PRINTED BY THE AUTHORITY
OF THE STATE OF ILLINOIS