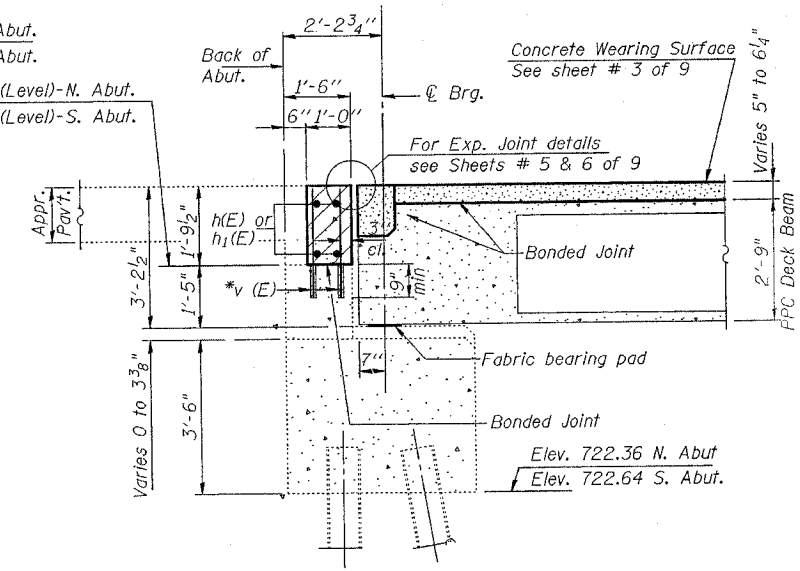
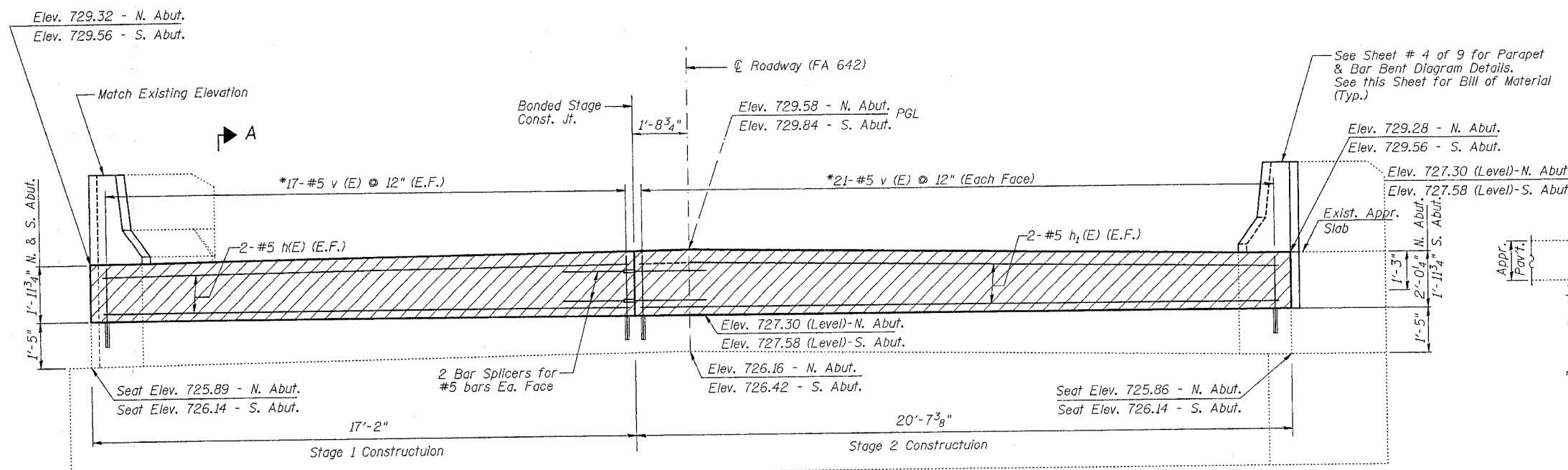


STATE OF ILLINOIS
DEPARTMENT OF TRANSPORTATION

ROUTE NO.	SECTION	COUNTY	TOTAL SHEETS	SHEET NO.	SHEET NO. 8
78	10BR-3D & 11BR-8	JO DAVIESS	45	26	9 SHEETS
FED. ROAD DIST. NO. 7	ILLINOIS	FED. AID PROJECT			

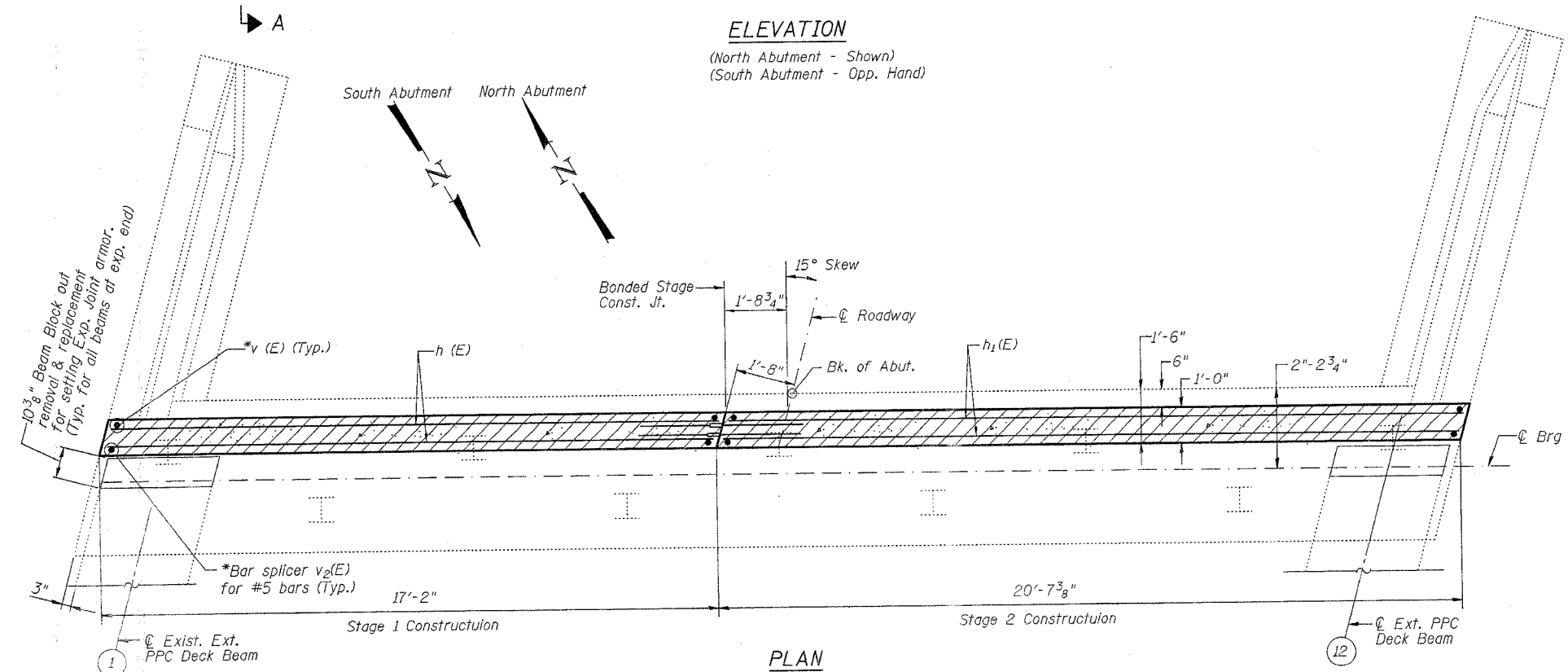
Contract # 64B27



SECTION A-A

Notes:
All horizontal dimensions are at right angles to beam ends.
Hatched area to be poured after concrete wearing surface is in place.
See Sheet 5 of 10 for bearing pad details.

ELEVATION
(North Abutment - Shown)
(South Abutment - Opp. Hand)



PLAN
(North Abutment - Shown)
(South Abutment - Rotate 180°)

ONE ABUTMENT
BILL OF MATERIAL

Bar No.	Size	Length	Shape
h(E)	4 #5	17'-6"	—
h ₁ (E)	4 #5	20'-6"	—
d(E)	4 #4	5'-1"	—
d ₁ (E)	4 #5	4'-9"	—
*v(E)	76 #5	2'-5"	—
Concrete Structures			Cu. Yd. 3.2
Reinforcement Bars, Epoxy Coated			Pound 390

** Includes backwall and parapet over backwall

Reinforcement bars designated (E) shall be epoxy coated.
For details of Bar Splicers, see sheet 9 of 9.

ABUTMENT DETAILS

IL. RTE. 78 OVER
PLUM RIVER
F.A. 642 SECTION (10BR-3)D & 11BR-8
JO DAVIESS COUNTY
STA. 318+36.71
STRUCTURE NUMBER 043-0040

Notes:
Hatched area shall be poured after Concrete Wearing Surface (including blackout) is in place and cured.
Cost of temporary retainers and accessories are included with Precast Prestressed Concrete Deck Beams.(33" Depth.)

*Epoxy grout v(E), v₁(E), and Bar Splicer v₂(E) bars in 9" min. drilled holes according to Section 584 of the Standard Specifications.

DESIGNED	JPM	200
CHECKED	EMM	
DRAWN	JPM	
CHECKED	EMM	
EXAMINED		ENGINEER OF BRIDGE DESIGN
PASSED		ENGINEER OF BRIDGES AND STRUCTURES