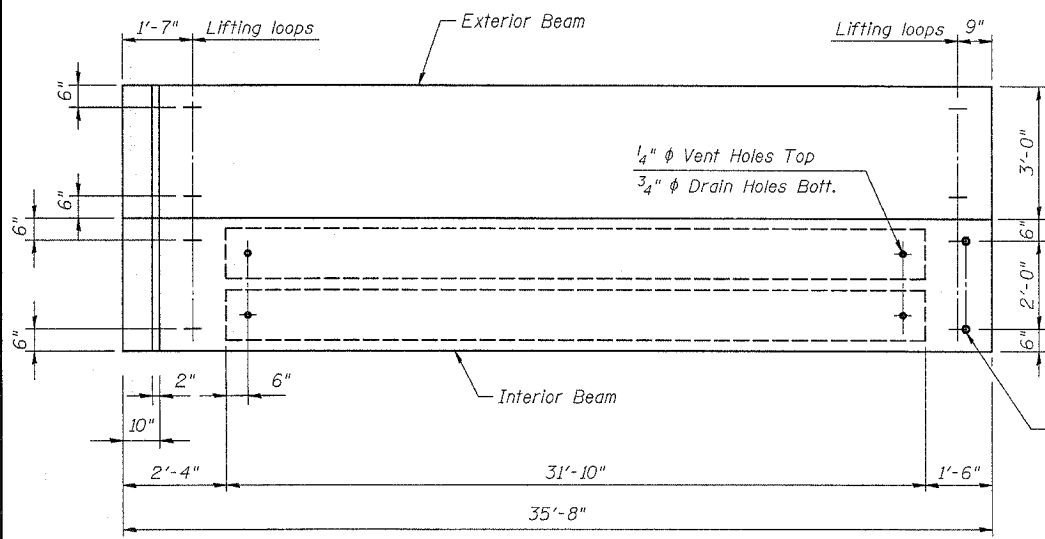


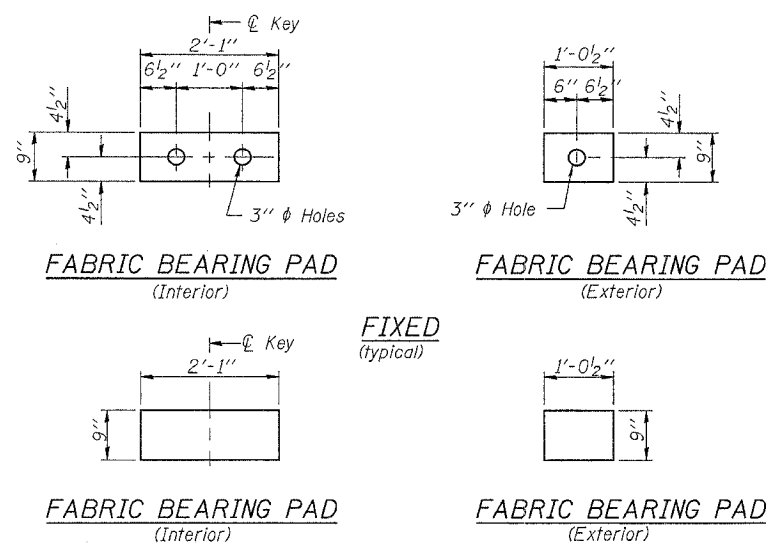
STATE OF ILLINOIS
DEPARTMENT OF TRANSPORTATION

ROUTE NO.	SECTION	COUNTY	TOTAL SHEETS	SHEET NO.	SHEET NO. 5 12 SHEETS
78	10BR-3D & 11BR-8	JO DAVIESS	45	32	
FED. ROAD DIST. NO. 7		ILLINOIS	FED. AID PROJECT		

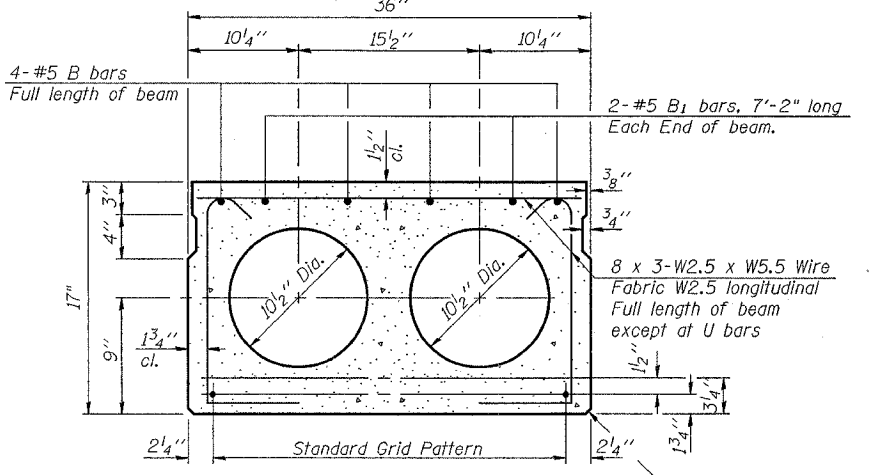
Contract # 64B27



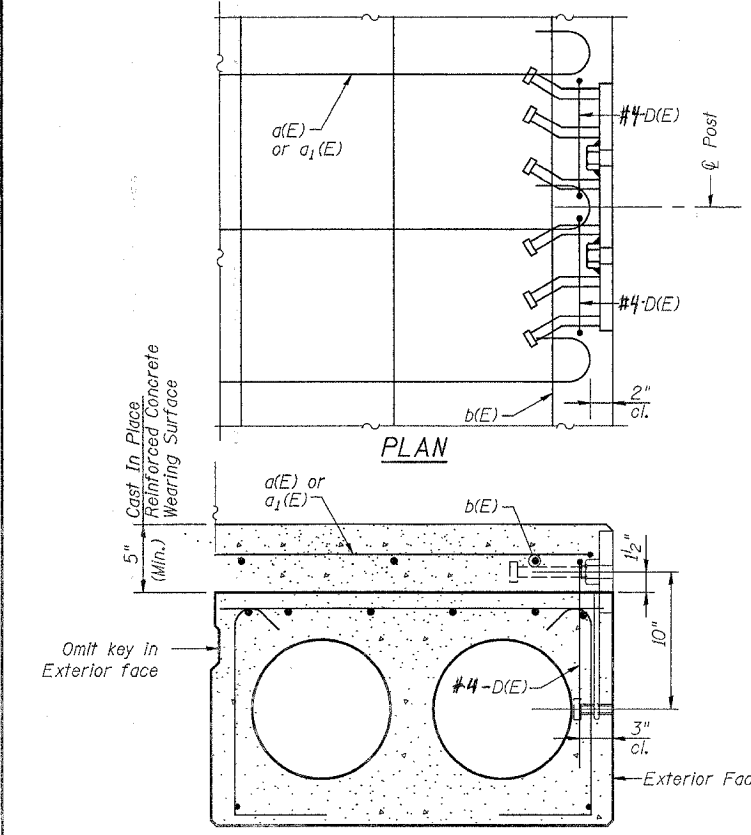
EXP. END (S. Abut. only) PLAN (Span 1 only) TYP. FIXED END



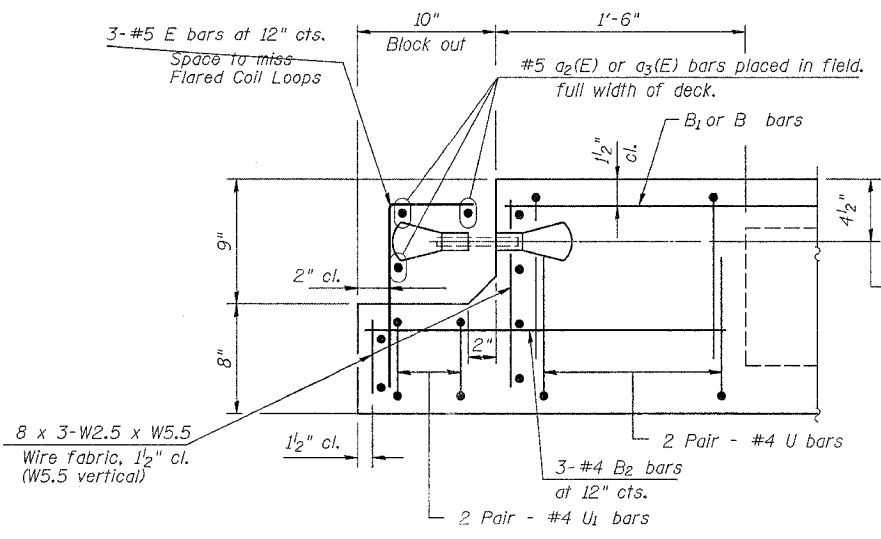
FABRIC BEARING PAD (Interior) FABRIC BEARING PAD (Exterior) FIXED (typical) EXPANSION (S. Abut. only)



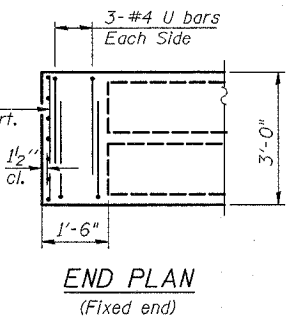
SECTION THRU INTERIOR BEAMS
13-1/2" ϕ Strands, Each Strand Stressed to 30,900 Lbs.
9-Strands 1 3/4" up, 4-Strands 3/4" up, 2 strands @ 12" up
Note: Place strands symmetrically about ϕ of beam.



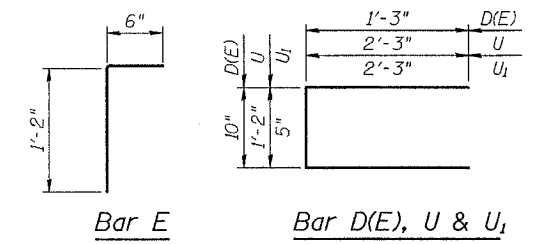
SECTION THRU EXTERIOR BEAMS
See Section Thru Interior Beams (this Sheet) for strand pattern, dimensions and bar call outs.



END OF BEAM (EXP. END) (S. Abut. only)



END PLAN (Fixed end)



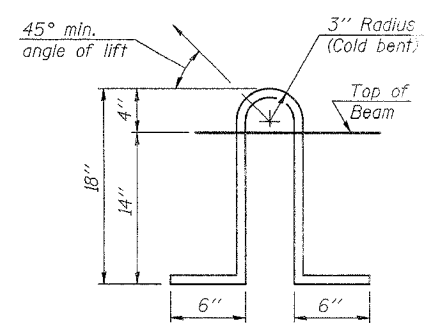
Bar E Bar D(E), U & U1

NOTES
Prestressing steel shall be uncoated high strength, low relaxation 7-wire strand, Grade 270. The nominal diameter shall be 1/2" and the nominal cross-sectional area shall be 0.153 sq. in. Lifting loops shall be 2 - 1/2" ϕ -270 ksi strands, as shown.

Non prestressing steel shall conform to AASHTO M-31 or M-322 Grade 60. The bearing seat surfaces shall be adjusted by shimming to assure firm and even bearing. Two 1/8" fabric adjusting shims of the dimensions of the Exterior Bearing Pad shall be provided for each bearing.

Keyway surfaces shall be cleaned to remove form oil or other bond breaking material prior to shipment of the beams. Cleaning shall be done by sandblasting the keyway areas between top of the beam and the bottom edge of the key. Corrosion Inhibitor, as covered in the Special Provisions, shall be used in the concrete for precast prestressed concrete deck beams. Required Release Strength, f'cl, shall be 4,000 p.s.i.

The cut strands at each beam end shall be given two coats of zinc dust spray or paint meeting the requirements of ASTM A 780. The zinc dust spray or paint shall be applied before corrosion appears and allowed to dry according to the manufacturer's specification prior to another coat of zinc. A concrete sealer meeting the requirements of Section 587 of the Standard Specifications shall be applied to the exterior face and 9" on the underside of the fascia beams. The sealer shall be applied after visible crack growth has subsided. This work shall be performed by the producer and included with the cost of the beam.



LIFTING LOOP DETAIL

BILL OF MATERIAL

Precast Prestressed Conc. Deck Bms. (17" Depth)	Sq. Ft.	3852
---	---------	------

SUPERSTRUCTURE DETAILS-2

IL. RTE. 78 OVER
DAVIS CREEK
F.A. 642 SECTION (10BR-3D & 11BR-8)
JO DAVIESS COUNTY
STA. 20+75.37
STRUCTURE NUMBER 043-0042

Notes:
The rail anchorage shall be cast with the beam and the wearing surface shall be cast in field. Formwork necessary for the wearing surface may be secured utilizing the bottom rail anchorage inserts and/or additional inserts cast into beam. Drilling into the beam will not be permitted.

DESIGNED CQM	200
CHECKED EMM	EXAMINED
DRAWN CQM	PASSED
CHECKED EMM	ENGINEER OF BRIDGES AND STRUCTURES

PD-3-S

10-22-04

DATE : 12-21-05

10/22/04 12:23/2005
 JAVIER DAVIS CHECKS SHEETS FILED IN 10/22/04 SUPERSTRUCTURE 043-0042