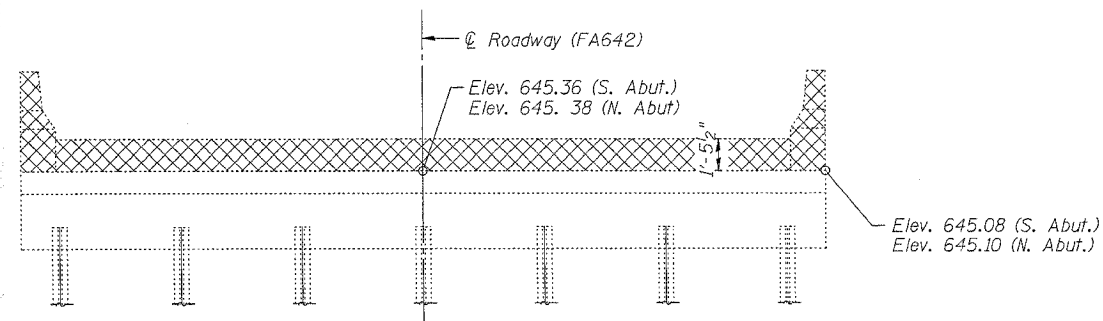
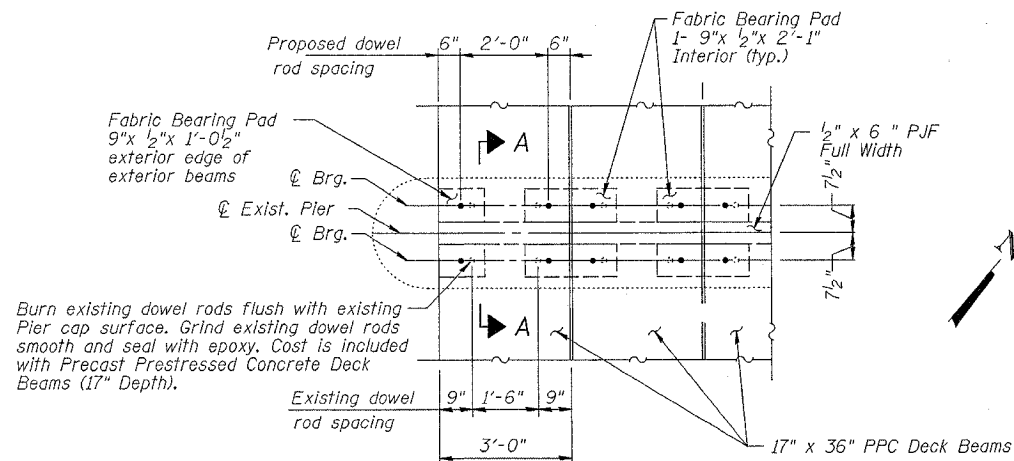


STATE OF ILLINOIS
DEPARTMENT OF TRANSPORTATION

ROUTE NO.	SECTION	COUNTY	DATE	SHEET NO.	SHEET NO. 9 12 SHEETS
78	10BR-3D & 11BR-8	JO DAVIESS	45	36	
FED. ROAD DIST. NO. 7	ILLINOIS	FED. AID PROJECT	Contract # 64B27		

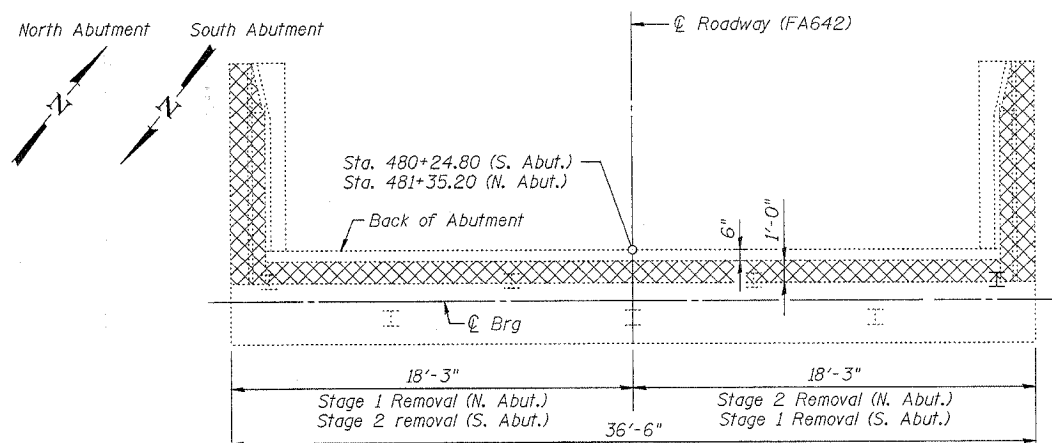


ABUTMENT ELEVATION

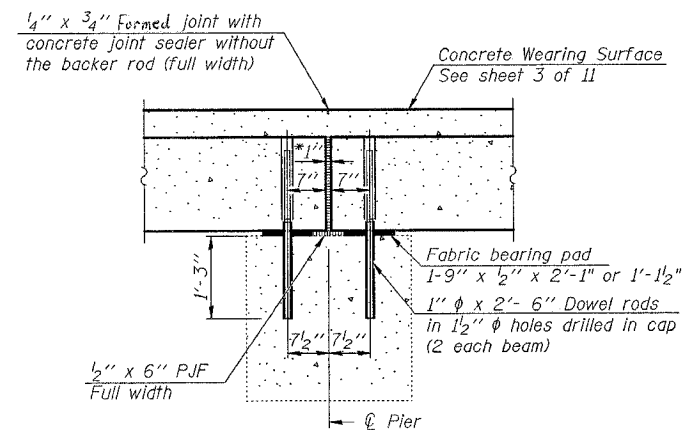


PIER TOP PLAN

(Pier 1 & 2)



ABUTMENT PLAN



SECTION A-A

*1" jt. shall be filled with non-shrink grout. 1" dimension may vary to accommodate tolerance in beam lengths.

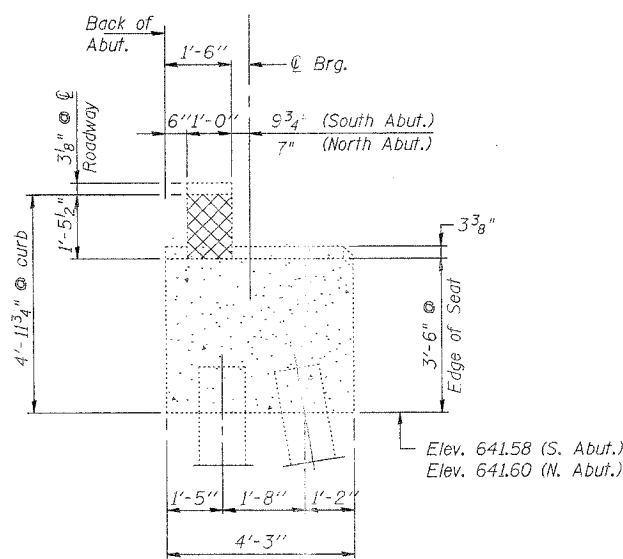
Notes:

After beams have been erected, holes shall be drilled into substructure and anchor dowels placed. Dowel holes shall be filled with non-shrink grout to top of beam and allowed to cure min. 24 hrs. prior to grouting the shear keys.

All horizontal dimensions are at right angles to beam ends.

BILL OF MATERIAL

Item	Unit	Total
Concrete Removal	Cu. Yd.	12.6



SEC. THRU ABUT.

LEGEND

Concrete Removal

DESIGNED	COM	200
CHECKED	EMM	EXAMINED
DRAWN	COM	PASSED
CHECKED	EMM	ENGINEER OF BRIDGES AND STRUCTURES

SUBSTRUCTURE CONCRETE
 REMOVAL
 IL. RTE. 78 OVER
 DAVIS CREEK
 F.A. 642 SECTION (10BR-3D & 11BR-8)
 JO DAVIESS COUNTY
 STA. 20+75.37
 STRUCTURE NUMBER 043-0042