



Illinois Department of Transportation

2300 South Dirksen Parkway / Springfield, Illinois / 62764

April 12, 2006

SUBJECT: Various Routes
Section D2 Bridge Painting 2006-2
Winnebago County
Contract No. 64B98
Item No. 31, April 28, 2006 Letting
Addendum A

NOTICE TO PROSPECTIVE BIDDERS:

Attached is an addendum to the plans or proposal. This addendum involves revised and/or added material.

1. Replaced sheet 12 of Plans.
2. Added sheet 12A of Plans.

Prime contractors must utilize the enclosed material when preparing their bid and must include any Schedule of Prices changes in their bidding proposal.

Bidders using computer-generated bids are cautioned to reflect any and all Schedule of Prices changes, if involved, into their computer programs.

Very truly yours,

Michael L. Hine
Engineer of Design
and Environment

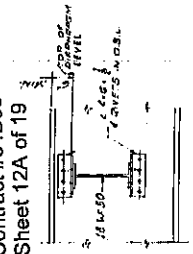
A handwritten signature in black ink, appearing to read 'Ted B. Walschleger' with a small 'P.E.' to the right.

By: Ted B. Walschleger, P. E.
Engineer of Project Management

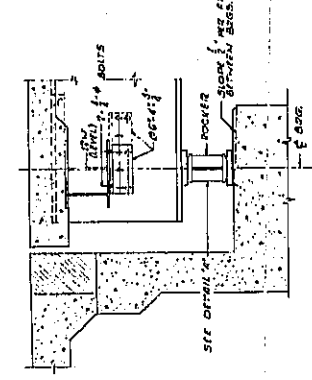
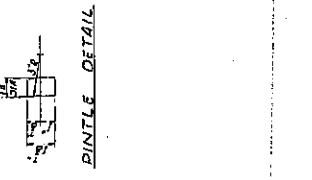
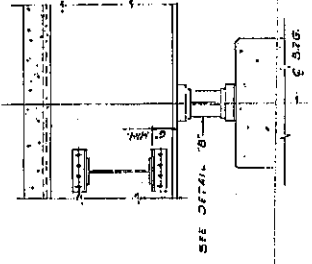
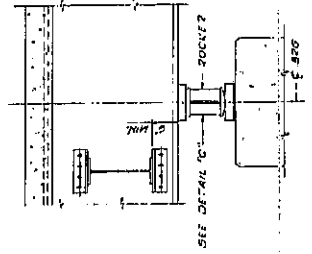
cc: Gregg Mounts, Region 2, District 2; Roger Driskell; R. E. Anderson;
Estimates; Design & Environment File

MS/cab

Various Routes
 D2 Bridge Painting 2006-2
 Winnebago County
 Contract #64B98
 Sheet 12A of 19



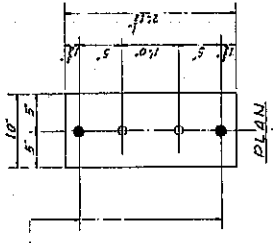
INTERIOR DIAPHRAGM



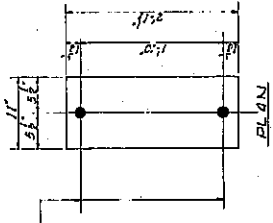
SECTION 4, EXPANSION PIER

SECTION 4, FIXED PIER

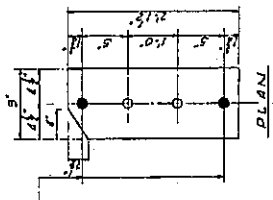
SECTION 4, ABUTMENT



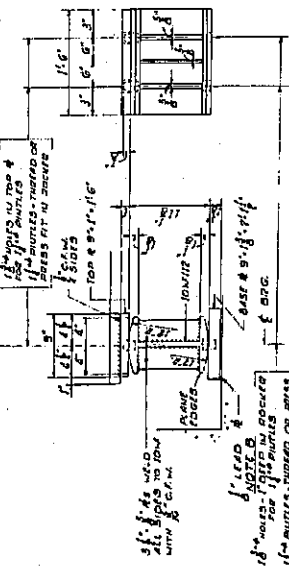
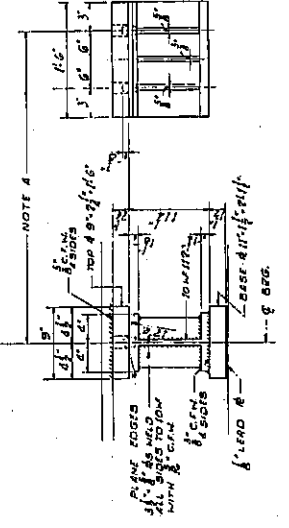
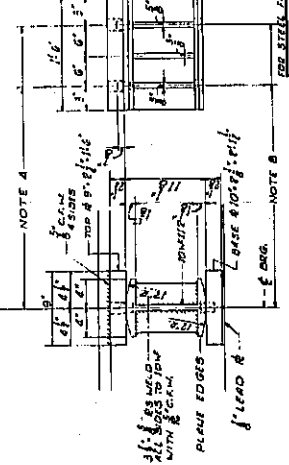
1 1/2" HOLES FOR 1/2" ANCHOR BOLTS WITH 1/2" WASHER UNDER NUTS



1 1/2" HOLES FOR 1/2" ANCHOR BOLTS WITH 1/2" WASHER UNDER NUTS



1 1/2" HOLES FOR 1/2" ANCHOR BOLTS WITH 1/2" WASHER UNDER NUTS



DETAIL C

DETAIL B

DETAIL A

PROJECT	SECTION	LINE
WINNEBAGO		
COUNTY		
STEEL DETAILS PART I		
Drawn by	Checked by	Approved by

ILLINOIS DIVISION OF HIGHWAYS
 ROCKFORD BYPASS
 F.A. ROUTE 184
 WINNEBAGO COUNTY

FOR DETAILS REFER TO DRAWING NO. 100
 ILLINOIS DIVISION OF HIGHWAYS
 ROCKFORD BYPASS
 F.A. ROUTE 184
 WINNEBAGO COUNTY

STEEL DETAILS PART I

Drawn by: _____
 Checked by: _____
 Approved by: _____

DATE: 4/12/06