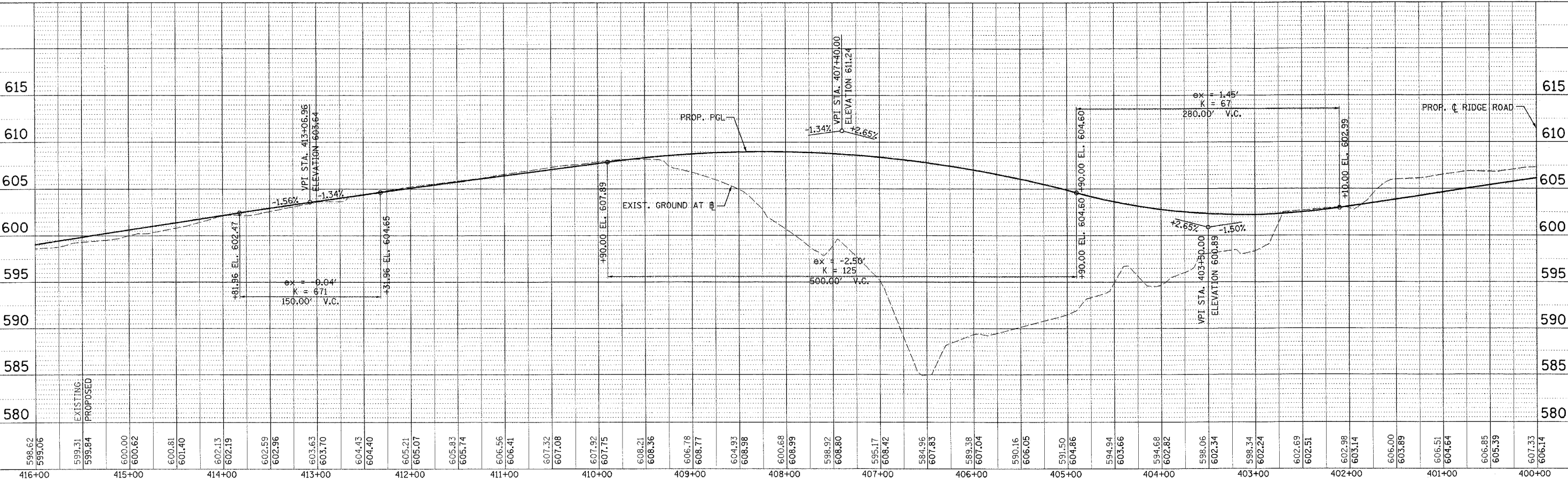
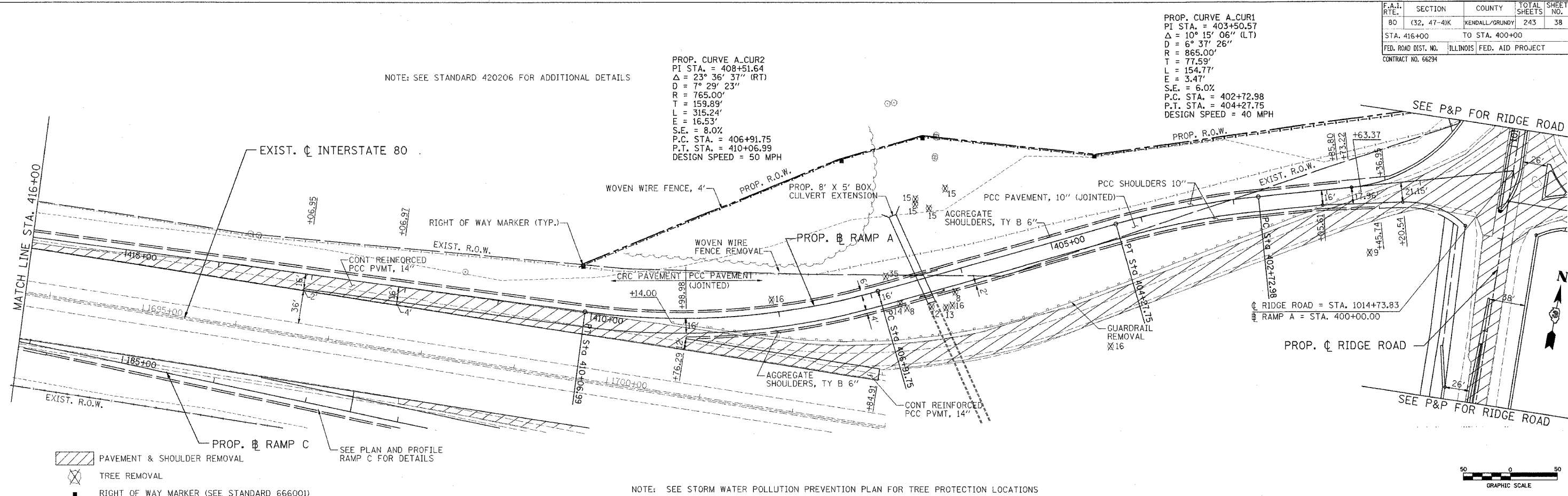


F.A.I. RTE.	SECTION	COUNTY	TOTAL SHEETS	SHEET NO.
80	(32, 47-4)K	KENDALL/GRUNDY	243	38
STA. 416+00		TO STA. 400+00		
FED. ROAD DIST. NO.		ILLINOIS FED. AID PROJECT		
CONTRACT NO. 66294				

PROP. CURVE A-CUR1  
 PI STA. = 403+50.57  
 $\Delta = 10^\circ 15' 06''$  (LT)  
 $D = 6^\circ 37' 26''$   
 $R = 865.00'$   
 $T = 77.59'$   
 $L = 154.77'$   
 $E = 3.47'$   
 $S.E. = 6.0\%$   
 P.C. STA. = 402+72.98  
 P.T. STA. = 404+27.75  
 DESIGN SPEED = 40 MPH

NOTE: SEE STANDARD 420206 FOR ADDITIONAL DETAILS

PROP. CURVE A-CUR2  
 PI STA. = 408+51.64  
 $\Delta = 23^\circ 36' 37''$  (RT)  
 $D = 7^\circ 29' 23''$   
 $R = 765.00'$   
 $T = 159.89'$   
 $L = 315.24'$   
 $E = 16.53'$   
 $S.E. = 8.0\%$   
 P.C. STA. = 406+91.75  
 P.T. STA. = 410+06.99  
 DESIGN SPEED = 50 MPH



DATE	
BY	
REVISION	
NO.	
DATE	
BY	
REVISION	
NO.	
DATE	
BY	
REVISION	
NO.	

DATE	
BY	
REVISION	
NO.	
DATE	
BY	
REVISION	
NO.	
DATE	
BY	
REVISION	
NO.	

**PATRICK**  
 ENGINEERING INC.  
 LISLE, ILLINOIS