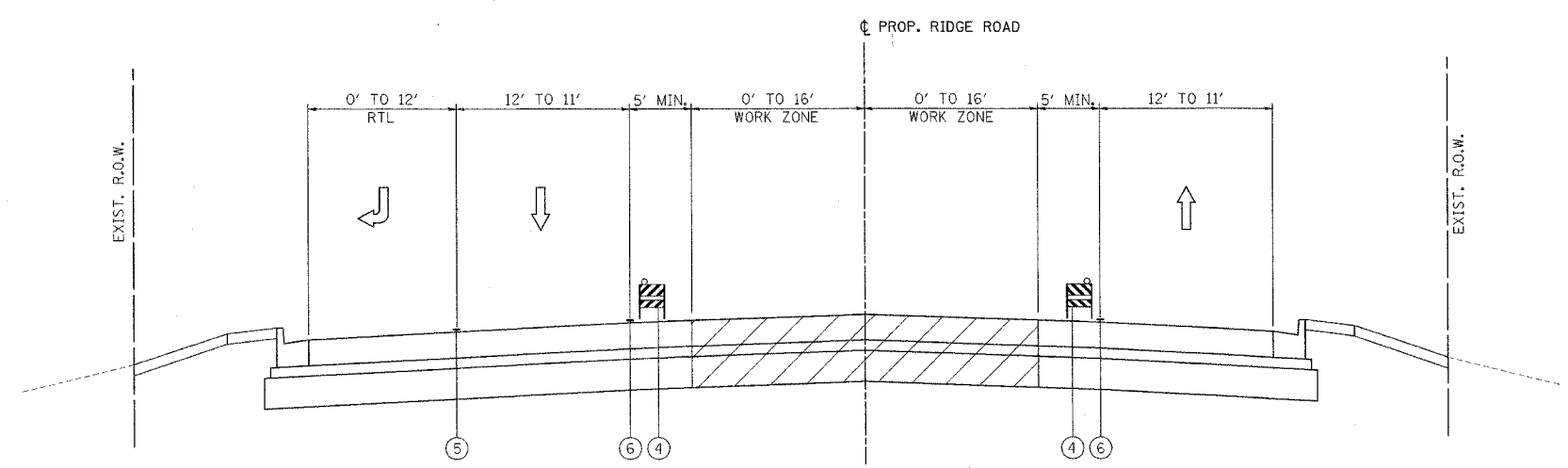
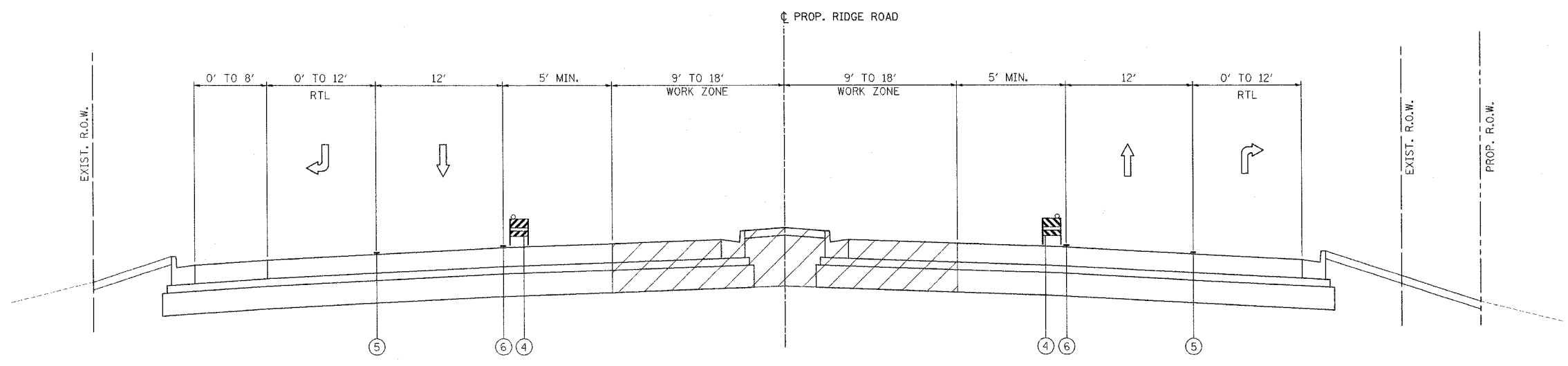


F.A.I. RTE.	SECTION	COUNTY	TOTAL SHEETS	SHEET NO.
80	(32, 47-4K)	KENDALL/GRUNDY	243	51
STA.		TO STA.		
FED. ROAD DIST. NO.		ILLINOIS FED. AID PROJECT		
CONTRACT NO. 66294				



- LEGEND:**
- ① TEMPORARY PAVEMENT MARKING LINE, 4 INCHES (WHITE)
 - ② TEMPORARY PAVEMENT MARKING LINE, 4 INCHES (DOUBLE YELLOW)
 - ③ TEMPORARY PAVEMENT MARKING LINE, 4 INCHES (YELLOW)
 - ④ TYPE II BARRICADE OR DRUM WITH STEADY BURNING LIGHT
 - ⑤ PAVEMENT MARKING TAPE, TYPE 3, 4 INCHES (WHITE)
 - ⑥ PAVEMENT MARKING TAPE, TYPE 3, 4 INCHES (DOUBLE YELLOW)
 - ⑦ PAVEMENT MARKING TAPE, TYPE 3, 4 INCHES (YELLOW)
 - ⑧ TEMPORARY PAVEMENT
 - ⑨ VERTICAL PANEL
 - BITUMINOUS TEMPORARY PAVEMENT, 10.5"
 - NEW CONSTRUCTION

(R7) RIDGE ROAD STAGE 3
 STA. 1000+30.00 TO STA. 1003+01.00
 STA. 1016+85.00 TO STA. 1025+50.00



(R8) RIDGE ROAD STAGE 3
 STA. 1003+01.00 TO STA. 1016+85.00

REVISIONS	
NAME	DATE

ILLINOIS DEPARTMENT OF TRANSPORTATION
 FAI ROUTE 80 (I-80 AT MINOOKA INTERCHANGE)
 SUGGESTED STAGING OF CONSTRUCTION
 & TRAFFIC CONTROL
 TYPICAL SECTIONS
 RIDGE ROAD STAGE 3
 SCALE: NONE
 DATE: 2/10/06
 DRAWN BY: MAT
 CHECKED BY: JJC

