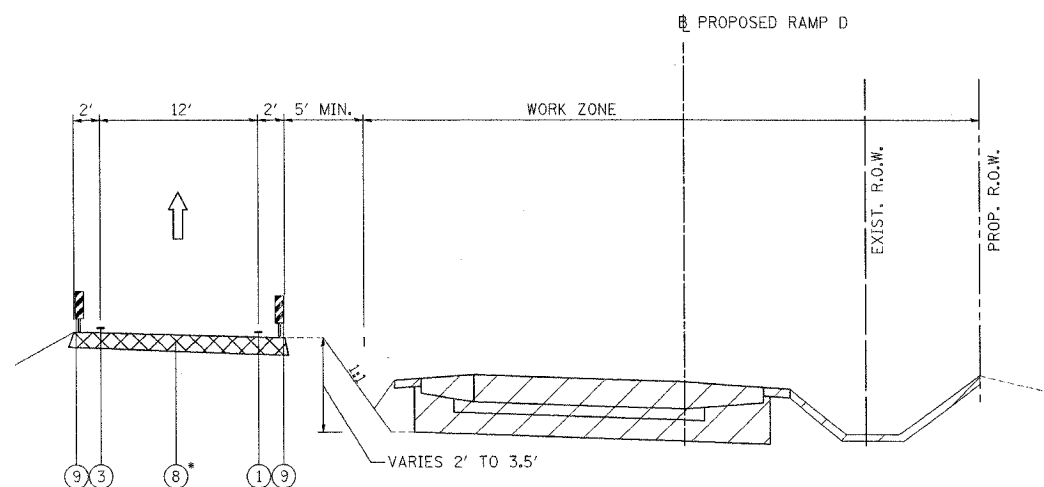


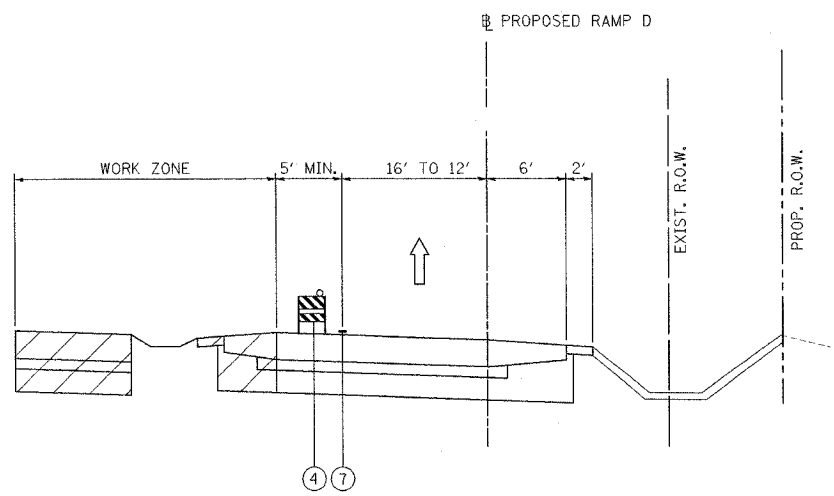


F.A.I. RTE.	SECTION	COUNTY	TOTAL SHEETS	SHEET NO.
80	(32, 47-41K)	KENDALL/GRUNDY	243	56
STA.	TO STA.			
FED. ROAD DIST. NO.	ILLINOIS	FED. AID PROJECT		
CONTRACT NO. 66294				



(D1) RAMP D STAGE 1
 STA. 201+00.00 TO STA. 216+75.31
 * TEMPORARY PAVEMENT FROM STA. 201+00.00 TO STA. 208+80.15

- ① TEMPORARY PAVEMENT MARKING LINE, 4 INCHES (WHITE)
 - ② TEMPORARY PAVEMENT MARKING LINE, 4 INCHES (DOUBLE YELLOW)
 - ③ TEMPORARY PAVEMENT MARKING LINE, 4 INCHES (YELLOW)
 - ④ TYPE II BARRICADE OR DRUM WITH STEADY BURNING LIGHT
 - ⑤ PAVEMENT MARKING TAPE, TYPE 3, 4 INCHES (WHITE)
 - ⑥ PAVEMENT MARKING TAPE, TYPE 3, 4 INCHES (DOUBLE YELLOW)
 - ⑦ PAVEMENT MARKING TAPE, TYPE 3, 4 INCHES (YELLOW)
 - ⑧ TEMPORARY PAVEMENT
 - ⑨ VERTICAL PANEL
-  BITUMINOUS TEMPORARY PAVEMENT, 10"
 NEW CONSTRUCTION



(D2) RAMP D STAGE 2
 STA. 201+00.00 TO STA. 220+50.00

REVISIONS	
NAME	DATE

ILLINOIS DEPARTMENT OF TRANSPORTATION
 FAI ROUTE 80 (I-80 AT MINOOKA INTERCHANGE)
 SUGGESTED STAGING OF CONSTRUCTION
 & TRAFFIC CONTROL
 TYPICAL SECTIONS
 RAMP D STAGE 1 & 2

SCALE: NONE DRAWN BY: MAT
 DATE: 2/10/06 CHECKED BY: JJC

