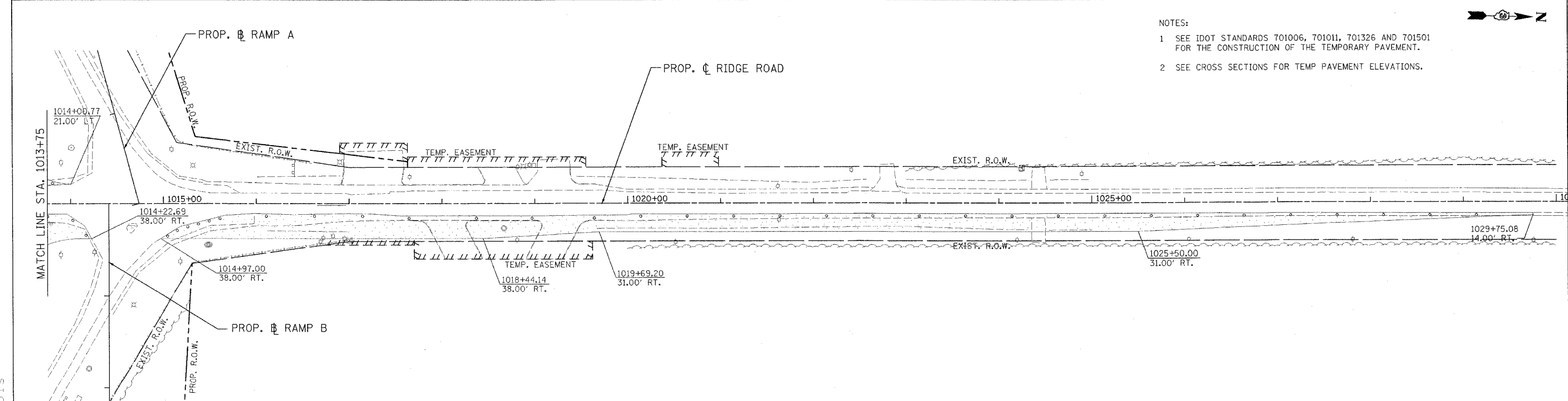
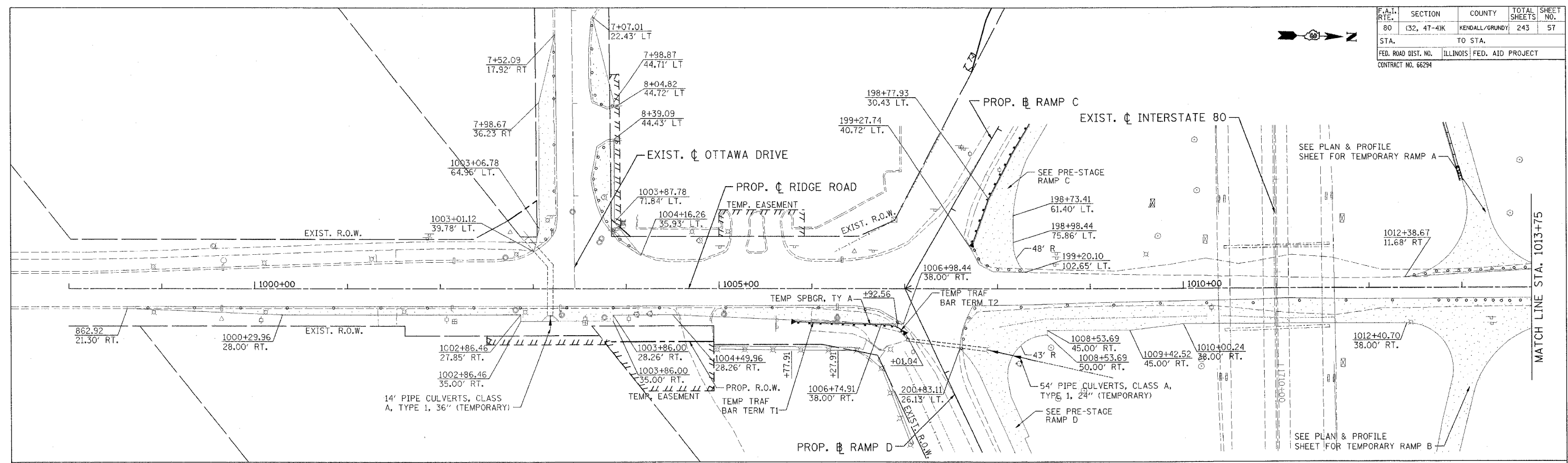


F.A.I. RTE.	SECTION	COUNTY	TOTAL SHEETS	SHEET NO.
80	(32, 47-4)K	KENDALL/GRUNDY	243	57
STA.	TO STA.			
FED. ROAD DIST. NO.	ILLINOIS	FED. AID PROJECT		
CONTRACT NO. 66294				



- NOTES:
- SEE IDOT STANDARDS 701006, 701011, 701326 AND 701501 FOR THE CONSTRUCTION OF THE TEMPORARY PAVEMENT.
 - SEE CROSS SECTIONS FOR TEMP PAVEMENT ELEVATIONS.

- LEGEND**
- TEMPORARY PAVEMENT
 - TYPE II BARRICADES OR DRUMS WITH STEADY BURN LIGHTS @ 50' CENTERS, 25' CENTERS ALONG TAPERS AND 12' CENTERS ALONG RADIUS RETURNS

REVISIONS	
NAME	DATE

ILLINOIS DEPARTMENT OF TRANSPORTATION
 FAI ROUTE 80 (I-80 AT MINOOKA INTERCHANGE)
 SUGGESTED STAGING OF CONSTRUCTION & TRAFFIC CONTROL
 PRE-STAGE
 RIDGE ROAD
 STA. 1000+00 TO STA. 1029+75
 SCALE: 1:50
 DATE: 2/10/06

MOT-10 OF 31

DRAWN BY: MAT
 CHECKED BY: JJC

PATRICK
 ENGINEERING INC.
 LISLE, ILLINOIS