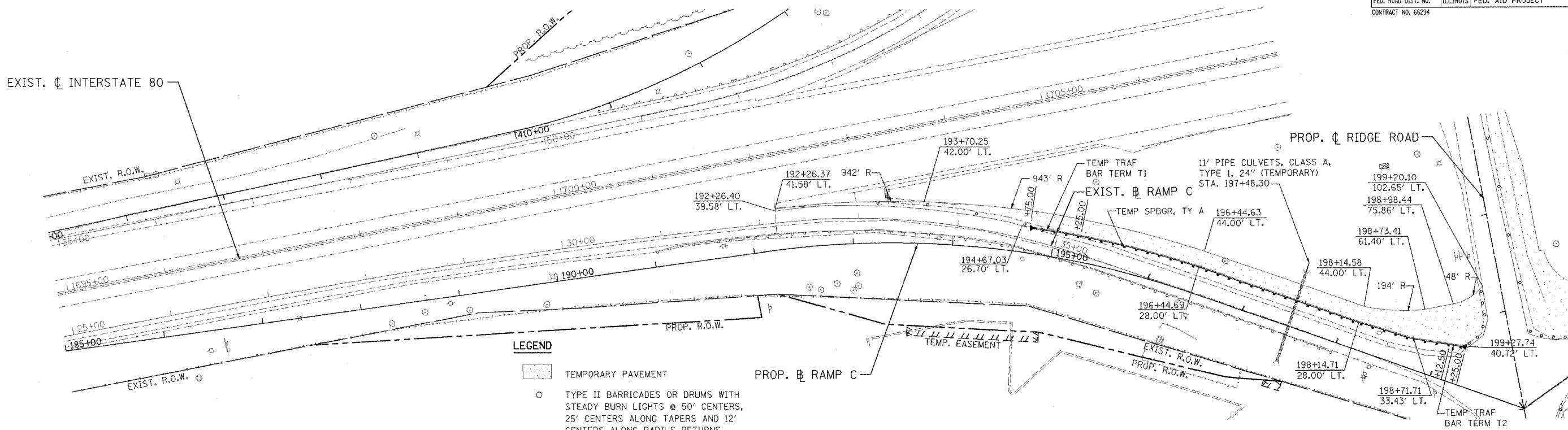
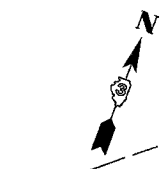
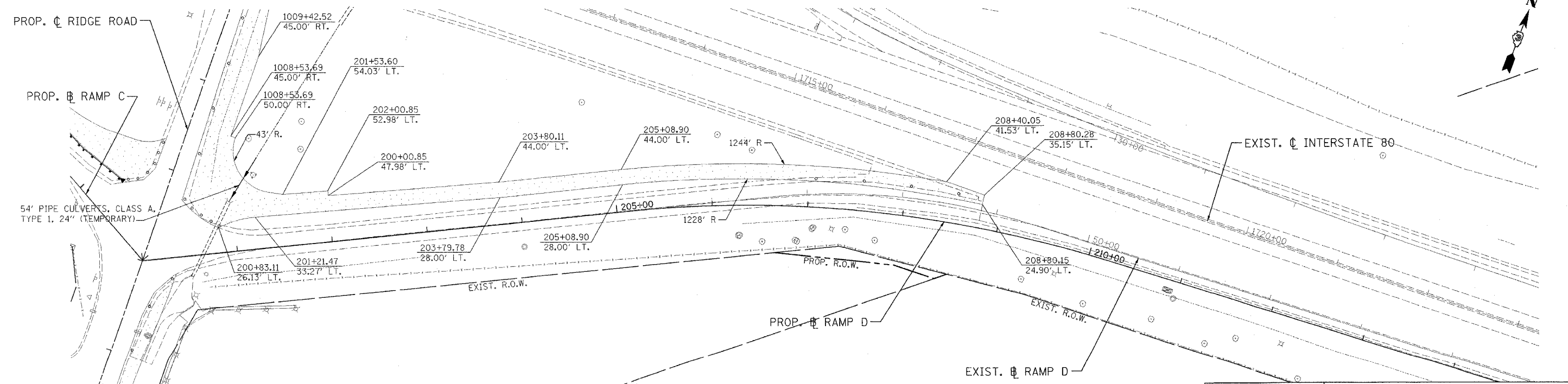


F.A.I. RTE.	SECTION	COUNTY	TOTAL SHEETS	SHEET NO.
80	(32, 47-4)K	KENDALL/GRUNDY	243	58
STA.		TO STA.		
FED. ROAD DIST. NO.		ILLINOIS FED. AID PROJECT		
CONTRACT NO. 66294				



- LEGEND**
- TEMPORARY PAVEMENT
 - TYPE II BARRICADES OR DRUMS WITH STEADY BURN LIGHTS @ 50' CENTERS, 25' CENTERS ALONG TAPERS AND 12' CENTERS ALONG RADIUS RETURNS



NOTES:
1 SEE CROSS SECTIONS FOR TEMP PAVEMENT ELEVATIONS.

REVISIONS	
NAME	DATE

ILLINOIS DEPARTMENT OF TRANSPORTATION
FAI ROUTE 80 (I-80 AT MINOOKA INTERCHANGE)
SUGGESTED STAGING OF CONSTRUCTION
& TRAFFIC CONTROL
PRE-STAGE
RAMP C & D

SCALE: 1:50
DATE: 2/10/06

DRAWN BY: MAT
CHECKED BY: JJC

PATRICK
ENGINEERING INC.
LISLE, ILLINOIS