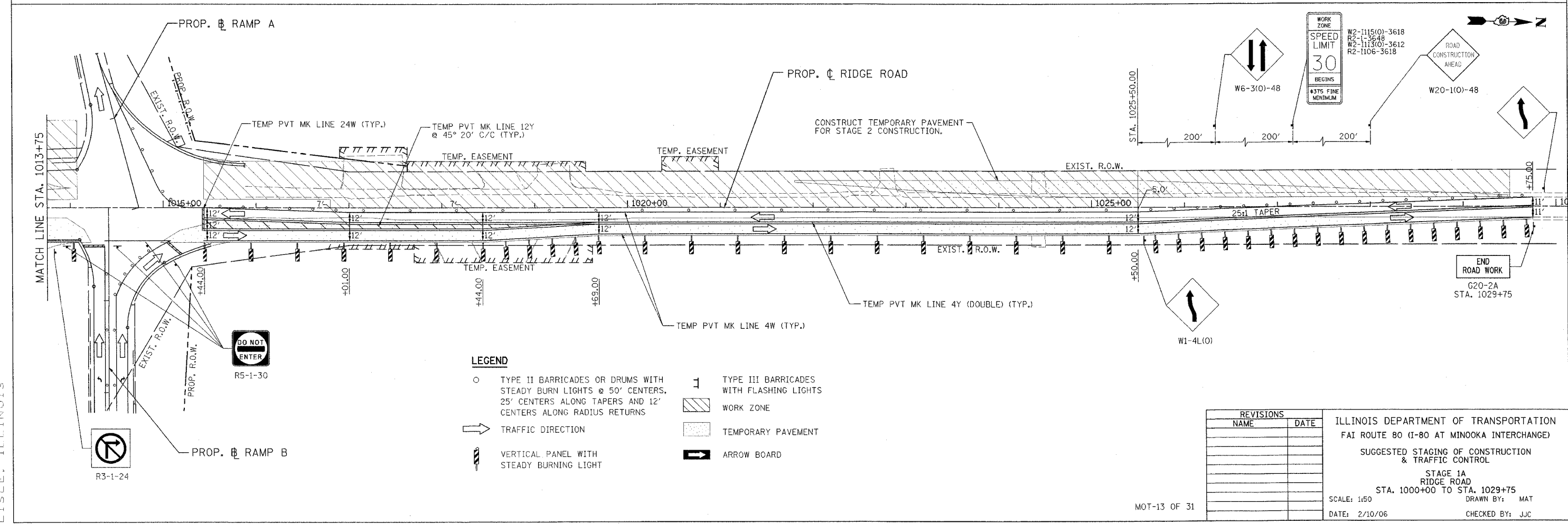
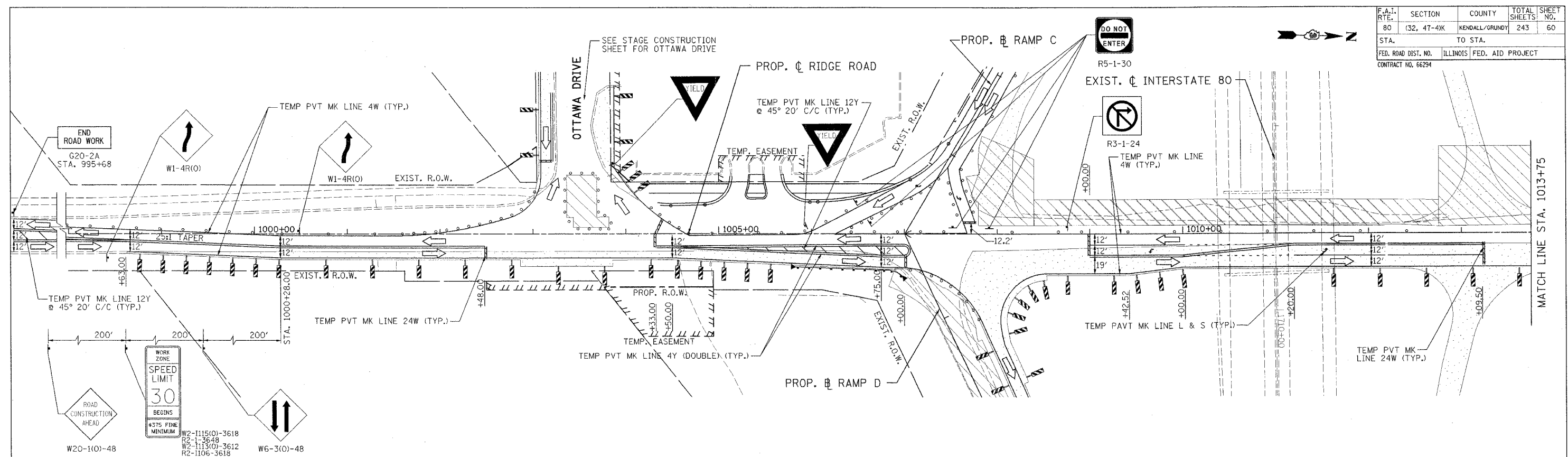


F.A.I. RTE.	SECTION	COUNTY	TOTAL SHEETS	SHEET NO.
80	(32, 47-4)K	KENDALL/GRUNDY	243	60
STA.	TO STA.			
FED. ROAD DIST. NO.	ILLINOIS	FED. AID PROJECT		
CONTRACT NO. 66294				



- LEGEND**
- TYPE II BARRICADES OR DRUMS WITH STEADY BURN LIGHTS @ 50' CENTERS, 25' CENTERS ALONG TAPERS AND 12' CENTERS ALONG RADIUS RETURNS
 - ➔ TRAFFIC DIRECTION
 - ⚡ VERTICAL PANEL WITH STEADY BURNING LIGHT
 - ⊥ TYPE III BARRICADES WITH FLASHING LIGHTS
 - ▨ WORK ZONE
 - ▨ TEMPORARY PAVEMENT
 - ➡ ARROW BOARD

REVISIONS		ILLINOIS DEPARTMENT OF TRANSPORTATION FAI ROUTE 80 (I-80 AT MINOOKA INTERCHANGE) SUGGESTED STAGING OF CONSTRUCTION & TRAFFIC CONTROL STAGE 1A RIDGE ROAD STA. 1000+00 TO STA. 1029+75 SCALE: 1:50 DATE: 2/10/06
NAME	DATE	
		DRAWN BY: MAT CHECKED BY: JJC

PATRICK
ENGINEERING INC.
LISLE, ILLINOIS