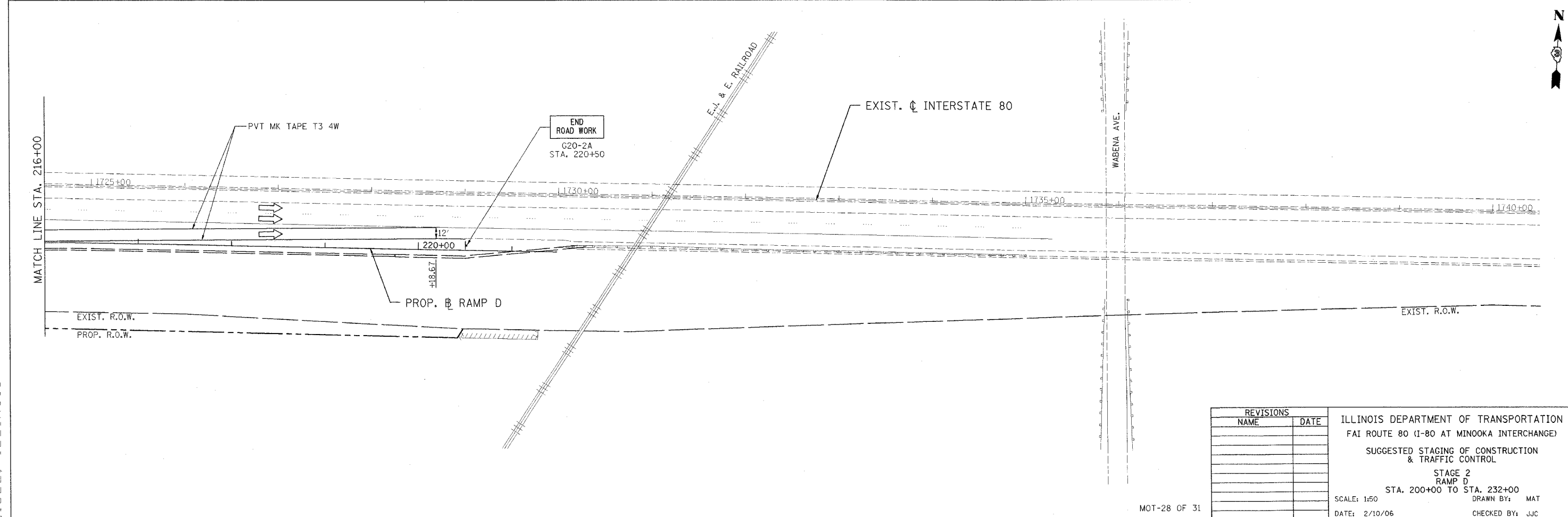
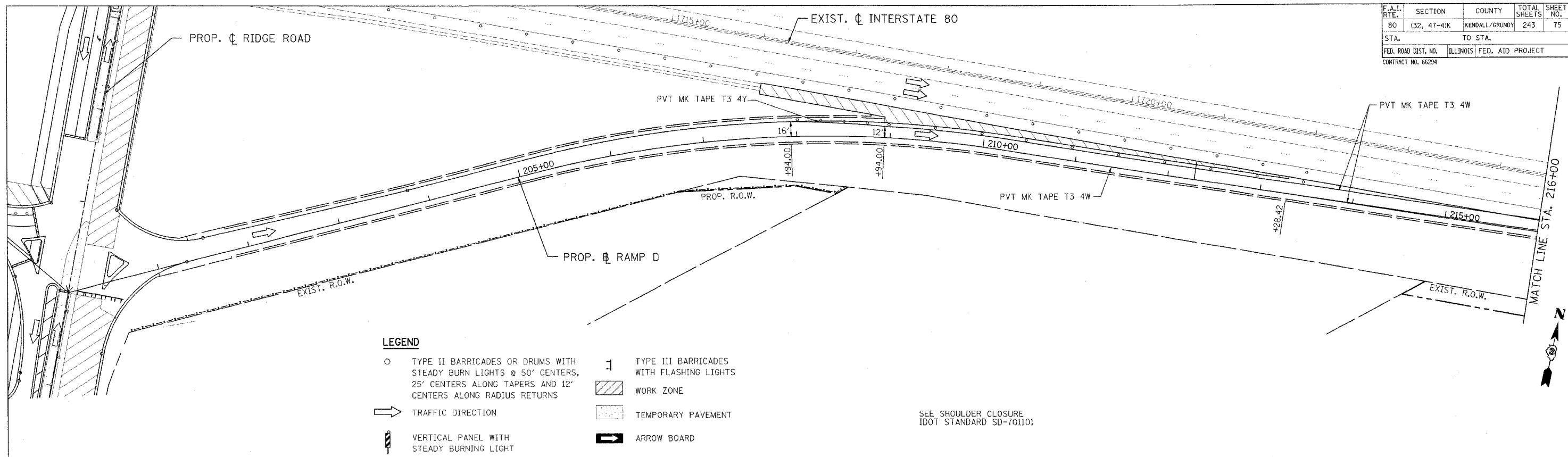


F.A.I. RTE.	SECTION	COUNTY	TOTAL SHEETS	SHEET NO.
80	(32, 47-4K)	KENDALL/GRUNDY	243	75
STA.		TO STA.		
FED. ROAD DIST. NO.		ILLINOIS FED. AID PROJECT		
CONTRACT NO. 66294				



REVISIONS	
NAME	DATE

ILLINOIS DEPARTMENT OF TRANSPORTATION
 FAI ROUTE 80 (I-80 AT MINOOKA INTERCHANGE)
 SUGGESTED STAGING OF CONSTRUCTION & TRAFFIC CONTROL
 STAGE 2
 RAMP D
 STA. 200+00 TO STA. 232+00
 SCALE: 1:50
 DATE: 2/10/06
 DRAWN BY: MAT
 CHECKED BY: JJC

PATRICK
 ENGINEERING INC.
 LISLE, ILLINOIS