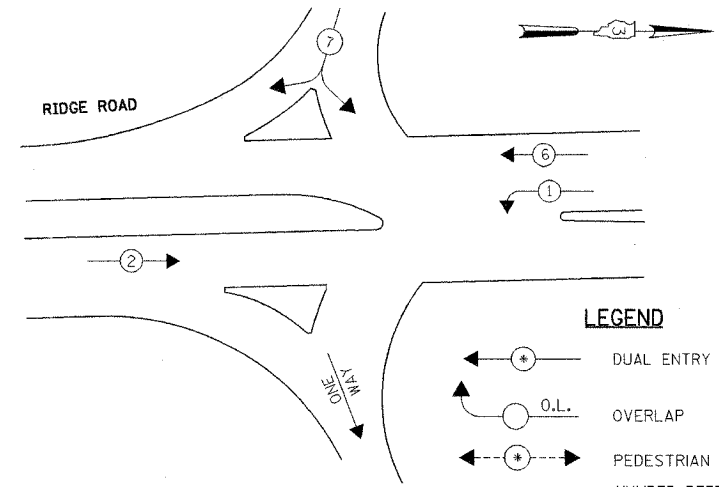


### CONTROLLER SEQUENCE

NAME OF INTERSECTION: RIDGE ROAD AT RAMPS "C" AND "D"  
 CONTROLLER SPECIFIED: FULL ACTUATED CONTROLLER,  
STANDARD SEQUENCE II, 3 PHASES IN TYPE IV CABINET

REFERRING TO STANDARD 857001, THE VEHICULAR AND PEDESTRIAN PHASES USED ARE DESIGNATED BELOW.  
 (SHOW MOVEMENTS AND PHASE NUMBERS)



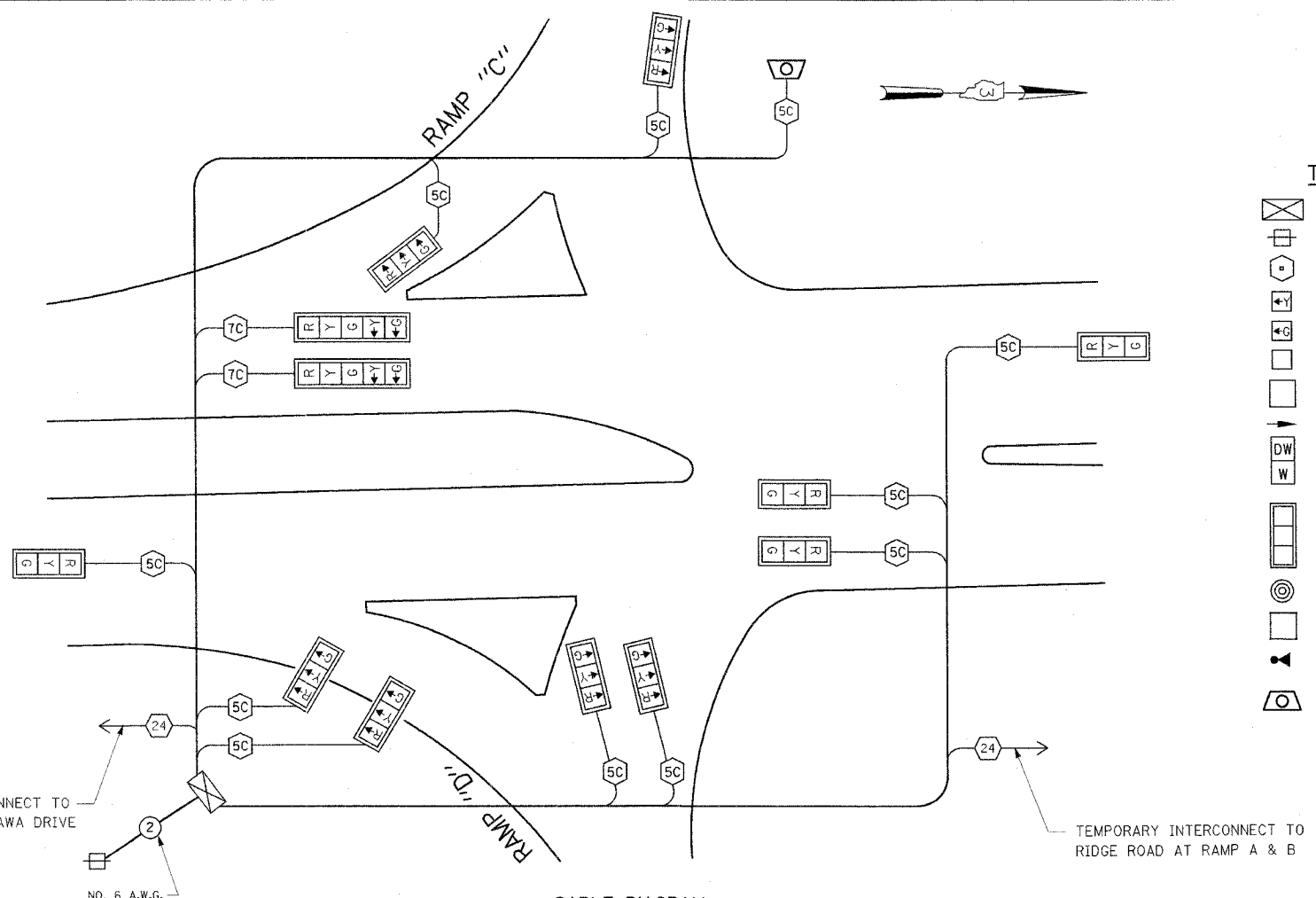
**LEGEND**

- ← \* → DUAL ENTRY PHASE
- ← O.L. → OVERLAP
- ← \* → PEDESTRIAN PHASE
- \* NUMBER REFERS TO ASSOCIATED PHASE

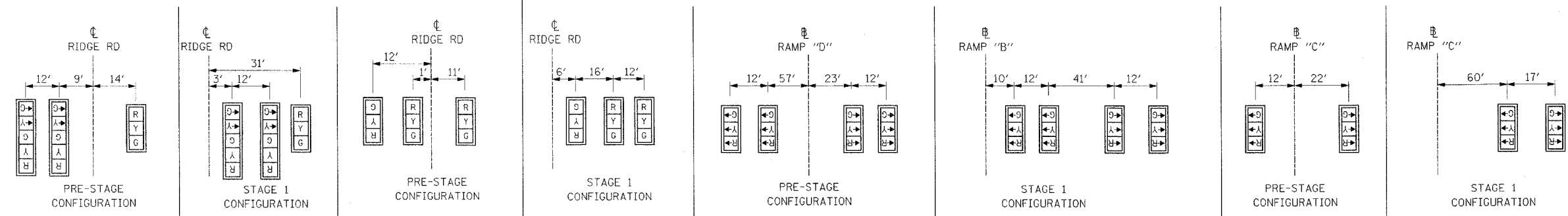
PHASE DESIGNATION DIAGRAM

### TEMPORARY CABLE DIAGRAM LEGEND

- ☒ TEMPORARY CONTROLLER CABINET
- ☐ TEMPORARY SERVICE INSTALLATION
- NUMBER OF CONDUCTORS
- ↻ YELLOW TURN ARROW
- ↻ GREEN TURN ARROW
- 8" SIGNAL
- 12" SIGNAL
- VEHICLE PEDESTRIAN MOVEMENT TERMINATOR
- DW W WALK / DON'T WALK SECTION
- ☐ TRAFFIC SIGNAL BACKPLATE
- ⊙ PUSHBUTTON DETECTOR
- ☐ VEHICLE DETECTOR, INDUCTION LOOP
- ▶ OPTICAL DETECTOR
- ⊙ MICROWAVE DETECTOR, TC 26B



CABLE DIAGRAM  
N.T.S.



SOUTH SPAN WIRE  
(LOOKING NORTH)

NORTH SPAN WIRE  
(LOOKING NORTH)

EAST SPAN WIRE  
(LOOKING WEST)

WEST SPAN WIRE  
(LOOKING WEST)

### SCHEDULE OF TEMPORARY SIGNAL HEADS

(FOR INFORMATION ONLY, ALL TEMPORARY SIGNALS INCLUDED IN COST OF ITEM: TEMPORARY TRAFFIC SIGNAL INSTALLATION)

ITEM	UNIT	QUANTITY
SIGNAL HEAD, 1-FACE, 3 SECTION, SPAN WIRE MOUNTED	EACH	10
SIGNAL HEAD, 1-FACE, 5 SECTION, SPAN WIRE MOUNTED	EACH	2

THE TRAFFIC SIGNAL CONTROL EQUIPMENT FOR THIS PROJECT SHALL BE "ECONOLITE" TO MATCH THE EXISTING TRAFFIC SIGNAL CONTROLLER IN THE VILLAGE OF MINOOKA.

REVISIONS	
NAME	DATE

ILLINOIS DEPARTMENT OF TRANSPORTATION  
FAI ROUTE 80 (I-80 AT MINOOKA INTERCHANGE)

### TEMPORARY CABLE DIAGRAM AND PHASE DESIGNATION DIAGRAM RIDGE ROAD AT RAMPS "C" AND "D"

SCALE: NONE  
DATE: 2/10/06

DRAWN BY: SA/KGP  
CHECKED BY: PKG

