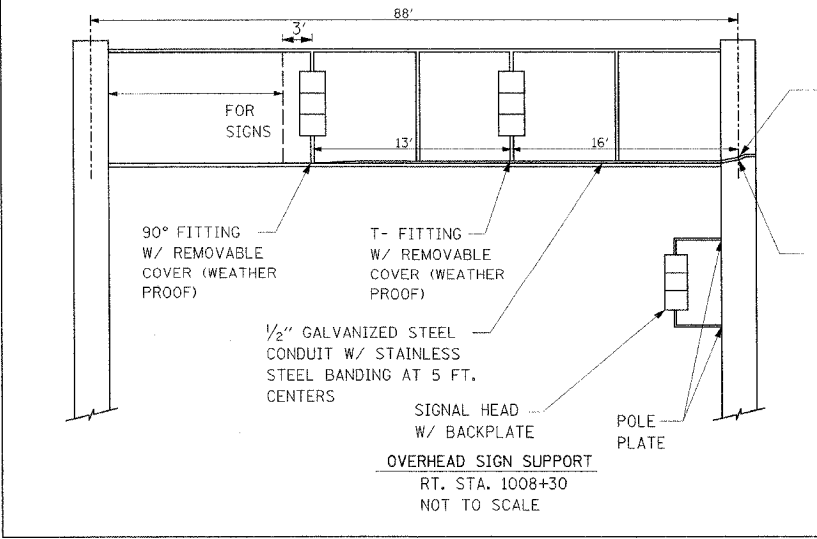
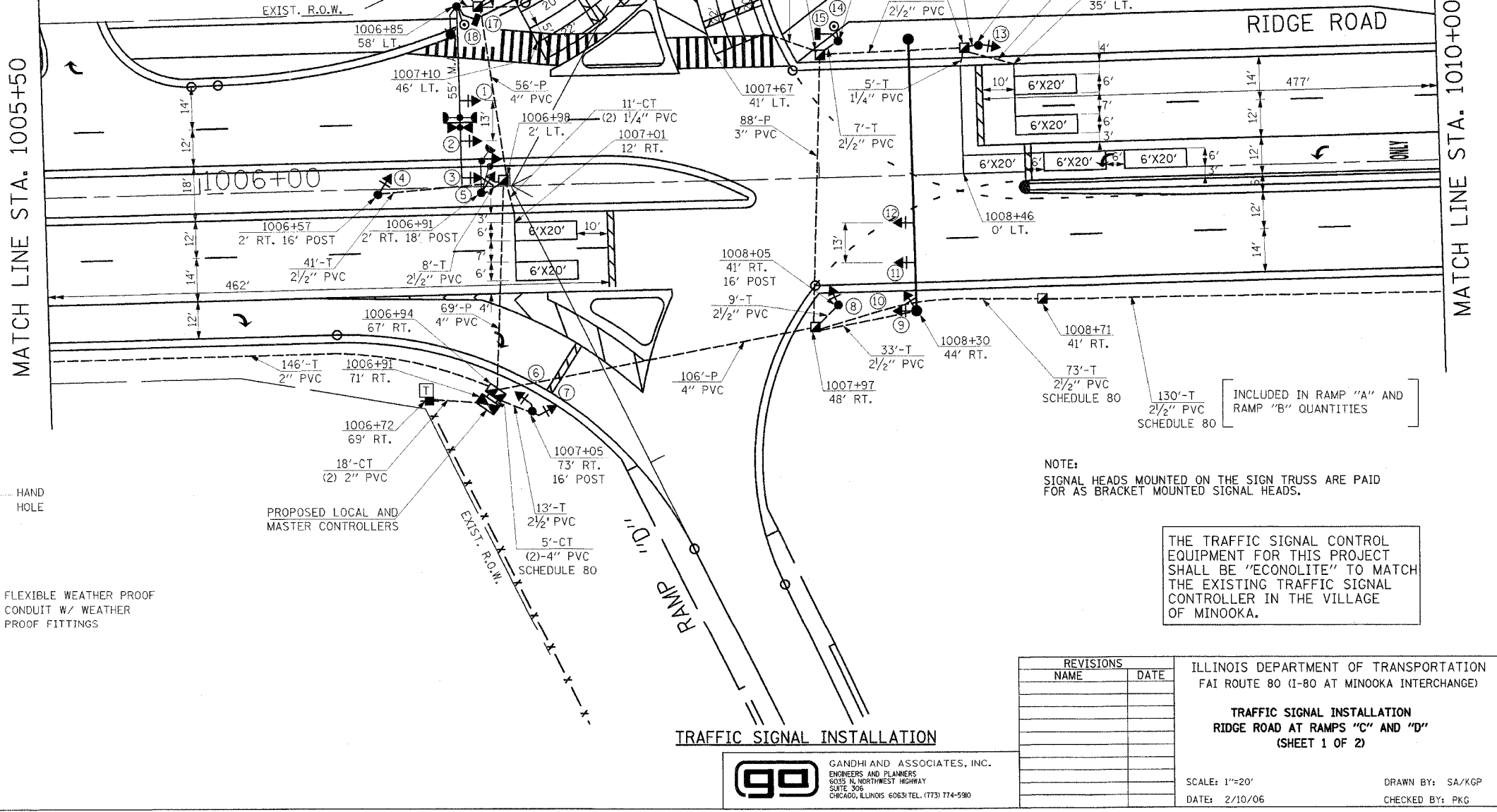


F.A.I. RTE.	SECTION	COUNTY	TOTAL SHEETS	SHEET NO.
80	(32, 47-4)K	KENDALL/GRUNDY	243	119
STA.	TO STA.			
FED. ROAD DIST. NO.	ILLINOIS FED. AID PROJECT			
CONTRACT NO. 66294				

- GENERAL NOTES**
FOR TRAFFIC CONTROL SIGNALS
- ALL DETECTOR-LOOPS SHALL CONSIST OF THE NUMBER OF TURNS REQUIRED AND SHALL BE INSTALLED IN STRICT CONFORMITY WITH THE LOOP DETECTOR AMPLIFIER MANUFACTURER'S RECOMMENDATIONS. THE DETECTOR-LOOP SHALL BE MEASURED AS SPECIFIED IN SECTION 1421.04 OF THE "STANDARD SPECIFICATIONS FOR TRAFFIC CONTROL ITEMS".
 - THE EXACT LOCATION OF ALL UTILITIES SHALL BE FIELD VERIFIED BY THE CONTRACTOR BEFORE THE INSTALLATION OF ANY COMPONENTS OF THE TRAFFIC SIGNAL SYSTEM. FOR LOCATION OF UTILITIES CALL J.U.L.I.E. 1-800-892-0123. FOR LOCATION OF STATE-OWNED UTILITIES CALL I.D.O.T. 815-434-8462.
 - ALL SIGNAL HEADS SHALL HAVE 12" LENSES AND POLYCARBONATE BACKPLATES WITH DEEP BACK FLANGE
 - ALL MAST ARM MOUNTED SIGNAL HEADS SHALL BE MOUNTED WITH THE RED INDICATIONS LEVEL & THE BOTTOM EDGE OF THE BACKPLATE 16'-6" (MIN) ABOVE THE CROWN OF THE ROADWAY.
 - THE EXACT LOCATION OF DETECTOR-LOOP TO BE DETERMINED BY THE ENGINEER IN THE FIELD.
 - A 1/4" DIAMETER CONTINUOUS NYLON ROPE SHALL BE FURNISHED AND LEFT IN PLACE IN ALL CONDUITS BETWEEN JUNCTION BOXES AND FOUNDATIONS OR CONTROLLER AS INCIDENTAL TO RESPECTIVE ELECTRIC CABLE PAY ITEM.
 - THE PROPOSED TRAFFIC SIGNAL CONTROL CABINET SHALL BE FURNISHED WITH MANUAL CONTROL SWITCH AND MANUAL CORD WITHIN THE POLICE DOOR COMPARTMENT AS INCIDENTAL TO THE CONTROLLER PAY ITEM.
 - THE CONTRACTOR SHALL ARRANGE FOR A FACTORY OR SUPPLIER REPRESENTATIVE TO BE PRESENT AT THE INTERSECTION WHEN THE SIGNAL IS TURNED ON AS INCIDENTAL TO THE CONTROLLER PAY ITEM. HE SHALL BE CAPABLE OF MAKING CERTAIN THAT THE CONTROL EQUIPMENT IS WORKING TO THE SATISFACTION OF THE ENGINEER.
 - THE CONTRACTOR SHALL BE RESPONSIBLE FOR OBTAINING ELECTRICAL SERVICE FOR THE TRAFFIC SIGNALS. THE CONTRACTOR SHALL CONTACT THE UTILITY COMPANY PRIOR TO BEGINNING WORK TO OBTAIN THE UTILITY COMPANY REQUIREMENTS FOR THE SERVICE INSTALLATION.
 - THE SIGN TRUSS IS PROVIDED WITH TWO ADDITIONAL VERTICAL SIGN BRACKETS TO BE USED FOR THE INSTALLATION OF THE SIGNAL HEADS TO THE TRUSS. THE LOCATION OF THESE TWO BRACKETS IS APPROXIMATELY 16 FEET AND 29 FEET FROM THE CENTER OF THE EAST SUPPORT. ANY AND ALL MOUNTING HARDWARE REQUIRED TO INSTALL THE SIGNALS ON THE TRUSS SIGN BRACKETS SHALL BE INCIDENTAL TO THE SIGNAL HEAD PAY ITEM.
 - ALL THREADS OF BOLTS USED IN TRAFFIC POLE ASSEMBLIES SHALL BE COATED WITH A NON-LEAD BASE ANTI-SIEZE COMPOUND SIMILAR TO LEAD PLATE PRIOR TO ASSEMBLING.
 - ALL CONDUIT IN TRENCH SHALL BE P.V.C. ALL CONDUIT PUSHED SHALL BE P.V.C. SCHEDULE 80. ALL CONDUIT ATTACHED TO STRUCTURES SHALL BE GALVANIZED STEEL.
 - THE DEPARTMENT OF TRANSPORTATION (815-434-8506) SHALL BE NOTIFIED AT LEAST 72 HOURS PRIOR TO THE TURNING ON OF THE CONTROLLER UNIT.
 - NO ADDITIONAL COMPENSATION WILL BE ALLOWED FOR PLACING CONDUIT AT GREATER THAN 2 FEET MINIMUM DEPTH TO AVOID OBSTACLES SUCH AS UNDERGROUND UTILITIES.
 - THE ELECTRICAL CONDUCTORS FOR ALL TRAFFIC SIGNAL HEADS SHALL BE SOLID, SOFT COPPER.
 - THE CONTROLLER CABINET SHALL BE PLACED SO THAT A TECHNICIAN MAY SEE THE INTERSECTION OVER THE TOP OF THE CABINET WHILE WATCHING THE COMPONENTS IN THE CABINET.
 - THE CONTRACTOR SHALL PROVIDE 3 FEET SLACK CABLE IN EACH TRAFFIC SIGNAL STRUCTURE; MAST ARM, POST, CONTROLLER. THE SLACK, WHICH IS IN ADDITION TO THE VERTICAL LENGTH OF CABLE DEFINED IN THE SPECIFICATIONS, SHALL BE PAID FOR AT THE CONTRACT UNIT PRICE FOR EACH CABLE.
 - THE CONTRACTOR SHALL BE RESPONSIBLE FOR REPORTING THE NEW ELECTRICAL LOADS FOR THE UNMETERED SERVICES ON THIS IMPROVEMENT TO THE UTILITY COMPANY AND AGENCY RESPONSIBLE FOR ENERGY CHARGES.
 - ALL LED ARROW SECTIONS SHALL HAVE 3 ROWS.
 - THE LENGTH OF DETECTOR LOOP CABLE FROM THE CURB TO THE JUNCTION BOX OR HANDHOLE IS INCIDENTAL TO THE DETECTOR LOOP PAY ITEM.
 - THE DOUBLE HANDHOLE SHALL BE FURNISHED WITH RECESSED, INTEGRAL, HINGED LIDS.
 - THE CONTRACTOR SHALL PROVIDE A SELF-ADHERED PHASE DIAGRAM ON THE INSIDE OF THE CONTROLLER CABINET DOOR.
 - THE CONTRACTOR SHALL VERIFY THAT THE GRADE IS NOT LOWERED MUCH BY THE TRAFFIC POST SO NO HEIGHT IS LOST.
 - PRIOR TO INSTALLATION THE CONTRACTOR SHALL STAKE THE SERVICE, MAST ARM AND SIGNAL POLE LOCATIONS, PAINT THE DETECTOR LOOP LOCATIONS AND CALL THE DEPARTMENT OF TRANSPORTATION (815-434-8506) FOR INSPECTION OF PLACEMENT.
 - THE CONTRACTOR SHALL LABEL THE FIBER OPTIC WITH DIRECTION AND ASSIGNMENT NUMBER. ALSO ALL FIBERS SHALL BE TERMINATED INCIDENTAL TO FIBER PAY ITEM.
 - CONTRACTOR SHALL VERIFY WITH MINOOKA FIRE PROTECTION DISTRICT (815-467-5637) FOR THE BRAND OF EMERGENCY VEHICLE PRE-EMPTION EQUIPMENT TO BE INSTALLED PRIOR TO THE CONTRACT BIDDING.

- LEGEND**
- SIGNAL HEAD, 1-FACE, 3 SECTION
 - SIGNAL HEAD, 1-FACE, 4 SECTION
 - SIGNAL HEAD WITH BACKPLATE
 - JUNCTION BOX
 - HANDHOLE
 - DOUBLE HANDHOLE
 - HEAVY DUTY HANDHOLE
 - SERVICE INSTALLATION
 - PROPOSED COMBINATION MAST ARM ASSEMBLY & LIGHT
 - EXISTING LIGHT
 - NUMBER OF CONDUCTORS (7 CONDUCTORS)
 - SIGNAL HEAD NUMBER
 - CONTROLLER
 - SIGNAL POST
 - MAST ARM ASSEMBLY AND POLE
 - SIGNAL HEAD
 - SIGNAL HEAD W/ BACKPLATE
 - CONDUIT IN TRENCH OR PUSHED
 - SIGNAL HEAD, PEDESTRIAN
 - PEDESTRIAN PUSHBUTTON DETECTOR
 - EMERGENCY VEHICLE SYSTEM DETECTOR
 - CONFIRMATION BEACON
 - TELEPHONE CONNECTION



NOTE:
SIGNAL HEADS MOUNTED ON THE SIGN TRUSS ARE PAID FOR AS BRACKET MOUNTED SIGNAL HEADS.

THE TRAFFIC SIGNAL CONTROL EQUIPMENT FOR THIS PROJECT SHALL BE "ECONOLITE" TO MATCH THE EXISTING TRAFFIC SIGNAL CONTROLLER IN THE VILLAGE OF MINOOKA.

REVISIONS	
NAME	DATE

ILLINOIS DEPARTMENT OF TRANSPORTATION
FAI ROUTE 80 (I-80 AT MINOOKA INTERCHANGE)

TRAFFIC SIGNAL INSTALLATION
RIDGE ROAD AT RAMP "C" AND "D"
(SHEET 1 OF 2)

SCALE: 1"=20'
DATE: 2/10/06

DRAWN BY: SA/KGP
CHECKED BY: PKG

GA GANDHI AND ASSOCIATES, INC.
ENGINEERS AND PLANNERS
6035 N. NORTHWEST HIGHWAY
SUITE 306
CHICAGO, ILLINOIS 60631 TEL. (773) 774-5900