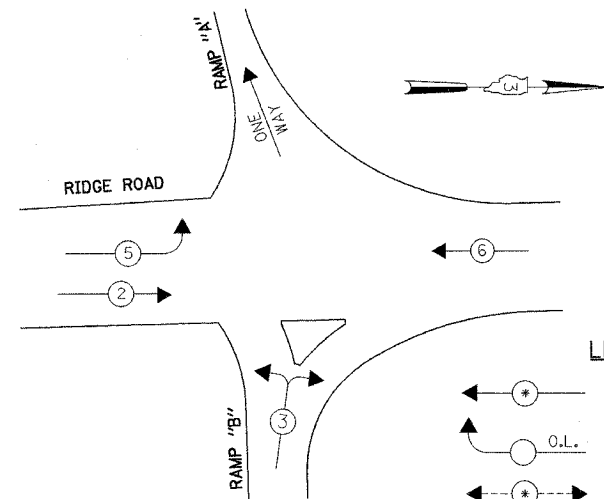


F.A.I. RTE.	SECTION	COUNTY	TOTAL SHEETS	SHEET NO.
80	(32, 47-41K)	KENDALL/GRUNDY	243	123
STA.	TO STA.			
FED. ROAD DIST. NO.	ILLINOIS	FED. AID PROJECT		
CONTRACT NO. 66294				

**CONTROLLER SEQUENCE**

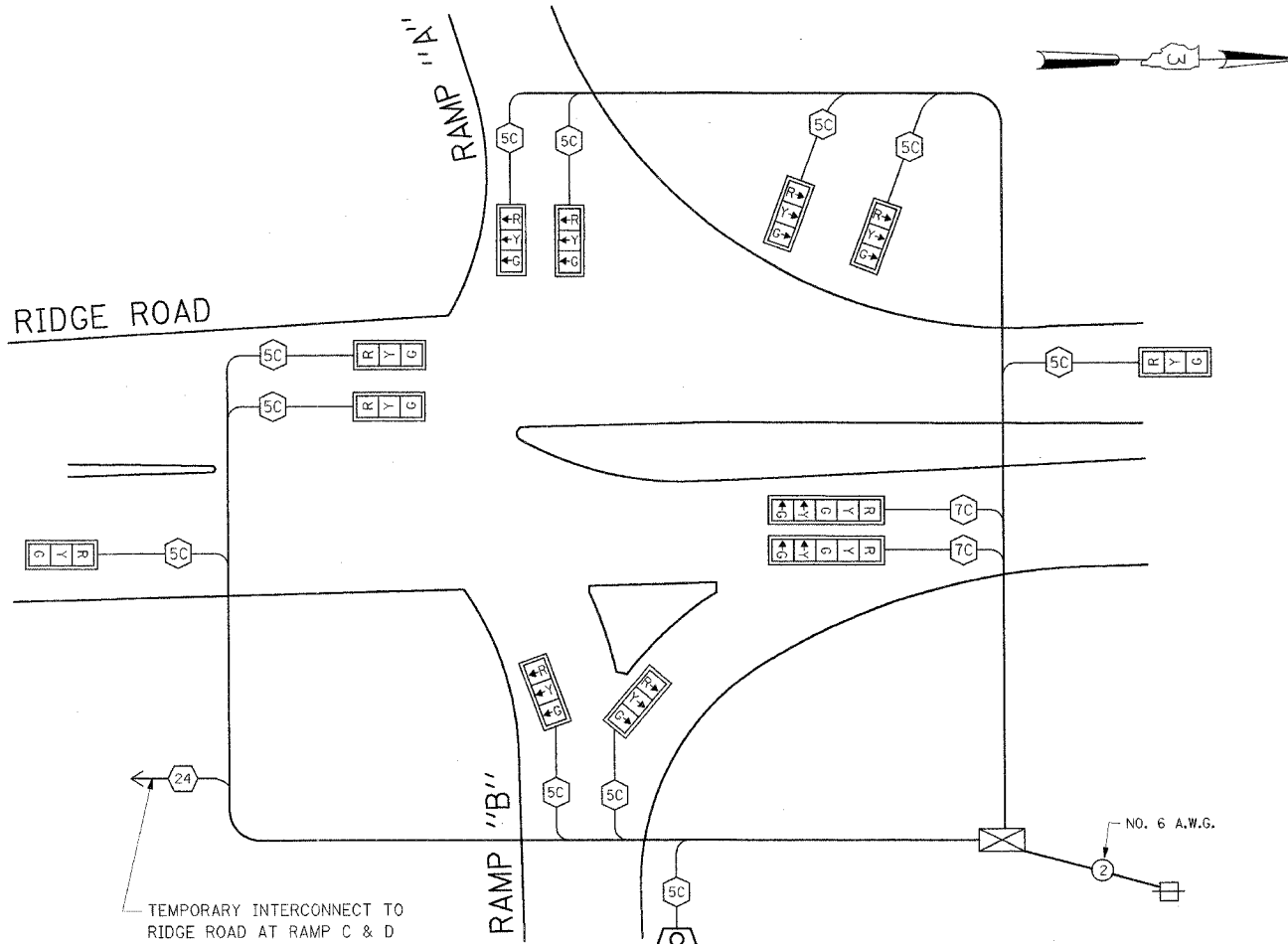
NAME OF INTERSECTION: RIDGE ROAD AT RAMPS "A" AND "B"  
 CONTROLLER SPECIFIED: FULL ACTUATED CONTROLLER,  
STANDARD SEQUENCE II, 3 PHASES IN TYPE IV CABINET  
 REFERRING TO STANDARD 857001, THE VEHICULAR AND PEDESTRIAN PHASES USED ARE DESIGNATED BELOW.  
 (SHOW MOVEMENTS AND PHASE NUMBERS)



**LEGEND**

- ← (1) → DUAL ENTRY PHASE
- ← (O.L.) → OVERLAP
- ← (P) → PEDESTRIAN PHASE
- \* NUMBER REFERS TO ASSOCIATED PHASE

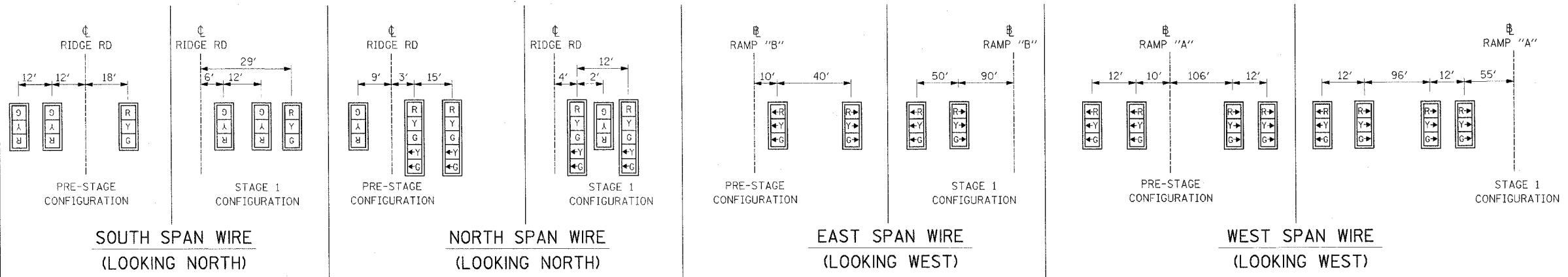
**PHASE DESIGNATION DIAGRAM**



**TEMPORARY CABLE DIAGRAM**

**TEMPORARY CABLE DIAGRAM LEGEND**

- ⊠ TEMPORARY CONTROLLER CABINET
- ⊞ TEMPORARY SERVICE INSTALLATION
- NUMBER OF CONDUCTORS
- ⬆ YELLOW TURN ARROW
- ⬆ GREEN TURN ARROW
- ⊠ 8" SIGNAL
- ⊠ 12" SIGNAL
- ⬆ VEHICLE PEDESTRIAN MOVEMENT TERMINATOR
- DW W WALK / DON'T WALK SECTION
- ⊠ TRAFFIC SIGNAL BACKPLATE
- ⊙ PUSHBUTTON DETECTOR
- ⊠ VEHICLE DETECTOR, INDUCTION LOOP
- ⬆ OPTICAL DETECTOR
- ⊠ MICROWAVE DETECTOR, TC 26B



**SCHEDULE OF TEMPORARY SIGNAL HEADS**

(FOR INFORMATION ONLY, ALL TEMPORARY SIGNALS INCLUDED IN COST OF ITEM: TEMPORARY TRAFFIC SIGNAL INSTALLATION)

ITEM	UNIT	QUANTITY
SIGNAL HEAD, 1-FACE, 3 SECTION, SPAN WIRE MOUNTED	EACH	10
SIGNAL HEAD, 1-FACE, 5 SECTION, SPAN WIRE MOUNTED	EACH	2

THE TRAFFIC SIGNAL CONTROL EQUIPMENT FOR THIS PROJECT SHALL BE "ECONOLITE" TO MATCH THE EXISTING TRAFFIC SIGNAL CONTROLLER IN THE VILLAGE OF MINOOKA.

REVISIONS	
NAME	DATE

ILLINOIS DEPARTMENT OF TRANSPORTATION  
 FAI ROUTE 80 (I-80 AT MINOOKA INTERCHANGE)

**TEMPORARY CABLE DIAGRAM AND PHASE DESIGNATION DIAGRAM  
 RIDGE ROAD AT RAMPS "A" AND "B"**

**GO** GANDHI AND ASSOCIATES, INC.  
 ENGINEERS AND PLANNERS  
 6035 N. NORTHWEST HIGHWAY  
 SUITE 306  
 CHICAGO, ILLINOIS 60631 TEL. (773) 774-5990

SCALE: NONE  
 DATE: 2/10/06  
 DRAWN BY: SA/KGP  
 CHECKED BY: PKG