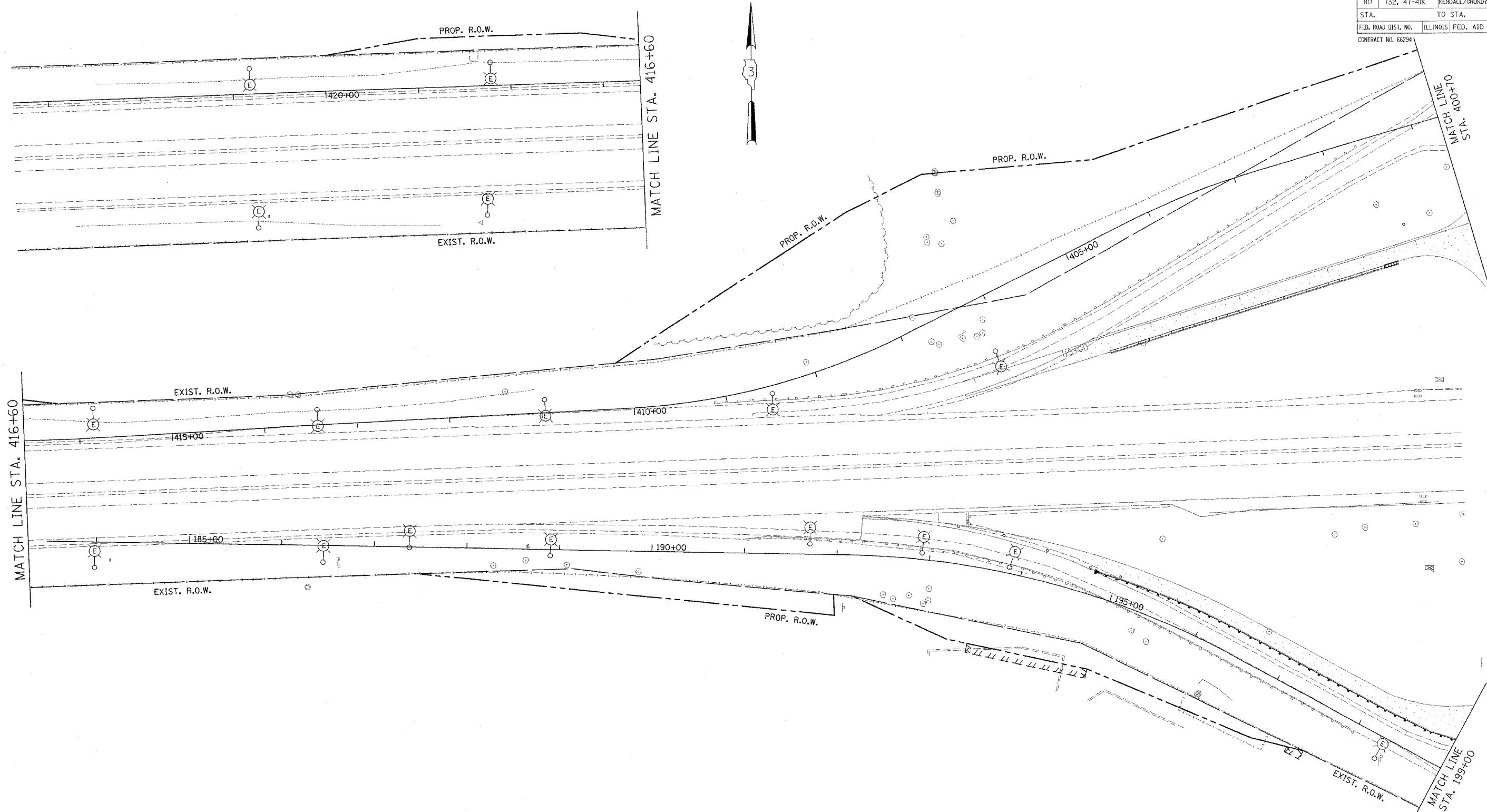


F.A.I. RTE.	SECTION	COUNTY	TOTAL SHEETS	SHEET NO.
80	(32, 47-4)K	KENDALL/GROUNY	243	132
STA.	TO STA.			
FED. ROAD DIST. NO.	ILLINOIS	FED. AID PROJECT		
CONTRACT NO. 66294				



MATCH LINE STA. 416+60

MATCH LINE STA. 400+00

MATCH LINE STA. 199+00

NOTE:
ALL EXISTING LIGHT POLES TO REMAIN FULLY OPERATIONAL IN THIS STAGE.

REVISIONS	
NAME	DATE

ILLINOIS DEPARTMENT OF TRANSPORTATION
FAI ROUTE 80 (I-80 AT MINOOKA INTERCHANGE)
TEMPORARY LIGHTING
RAMP "A" AND RAMP "C"
SHEET 1 OF 2
PRE-STAGE

SCALE: 1:50
DATE: 2/10/06

DRAWN BY: KGP/MAE
CHECKED BY: MAE/PKG

99 GANDHI AND ASSOCIATES, INC.
ENGINEERS AND PLANNERS
6035 N. NORTHWEST HIGHWAY
SUITE 200
CHICAGO, ILLINOIS 60631 TEL: (773) 774-5910

PATRICK
ENGINEERING INC.
LISLE, ILLINOIS