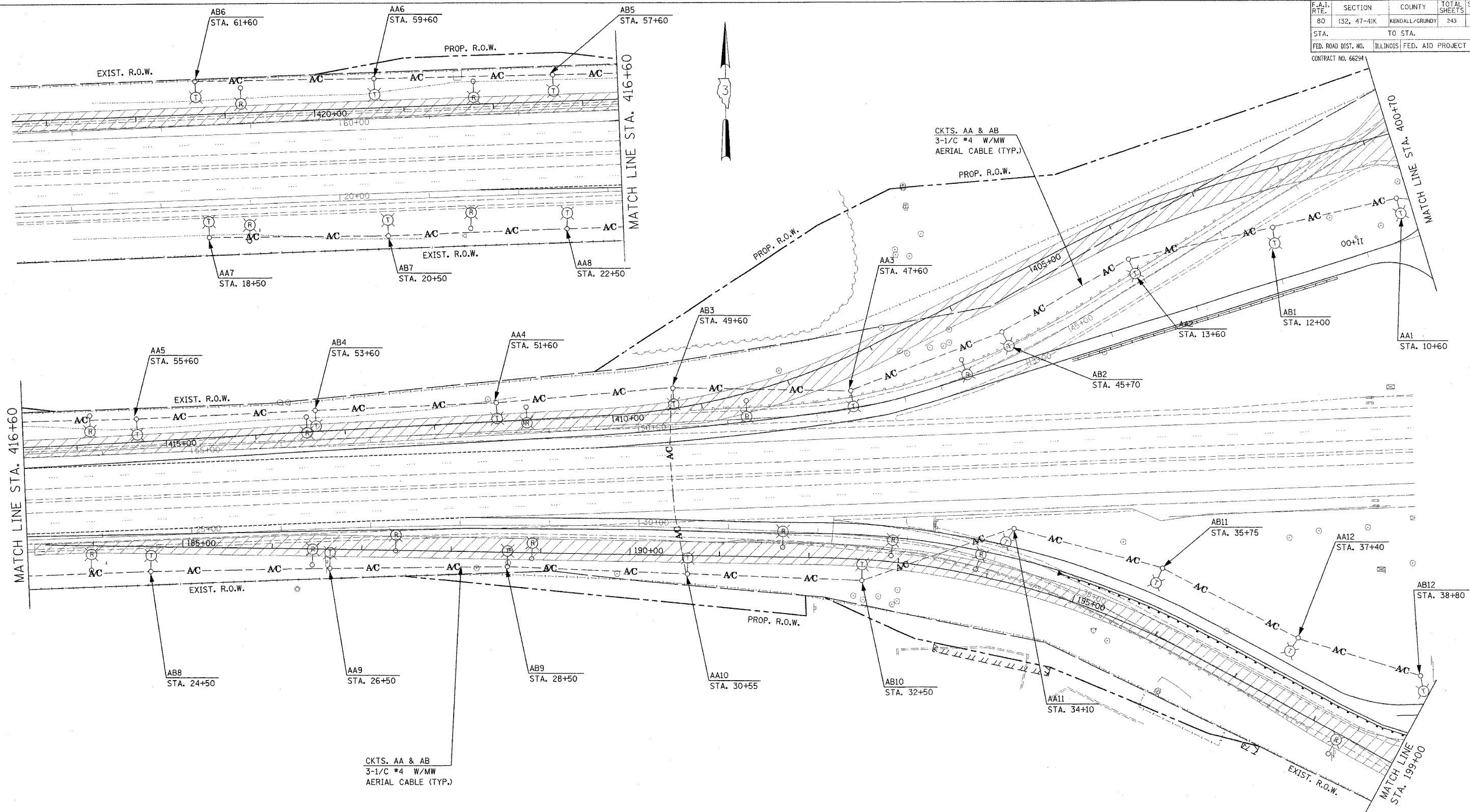


F.A.I. RTE.	SECTION	COUNTY	TOTAL SHEETS	SHEET NO.
80	(32, 47-4)K	KENDALL/GRUNDY	243	134
STA.	TO STA.			
FED. ROAD DIST. NO.	ILLINOIS	FED. AID PROJECT		

CONTRACT NO. 66294



CKTS. AA & AB
3-1/C #4 W/MW
AERIAL CABLE (TYP.)

CKTS. AA & AB
3-1/C #4 W/MW
AERIAL CABLE (TYP.)

NOTES:

1. ALL LIGHTING WORK SHOWN IN THIS PLAN SHALL BE INSTALLED, TESTED, AND MADE FULLY OPERATIONAL PRIOR TO COMMENCEMENT OF STAGE 1 CONSTRUCTION.

REVISIONS	
NAME	DATE

ILLINOIS DEPARTMENT OF TRANSPORTATION
FAI ROUTE 80 (I-80 AT MINOOKA INTERCHANGE)
TEMPORARY LIGHTING
RAMP "A" AND RAMP "C"
SHEET 1 OF 2
STAGE 1

SCALE: 1:50
DATE: 2/10/06

DRAWN BY: KGP/MAE
CHECKED BY: MAE/PKG

GO GANDHI AND ASSOCIATES, INC.
ENGINEERS AND PLANNERS
6035 N. NORTHWEST HIGHWAY
SUITE 306
CHICAGO, ILLINOIS 60631 TEL. (773) 774-5900

PATRICK
ENGINEERING INC.
LISLE, ILLINOIS