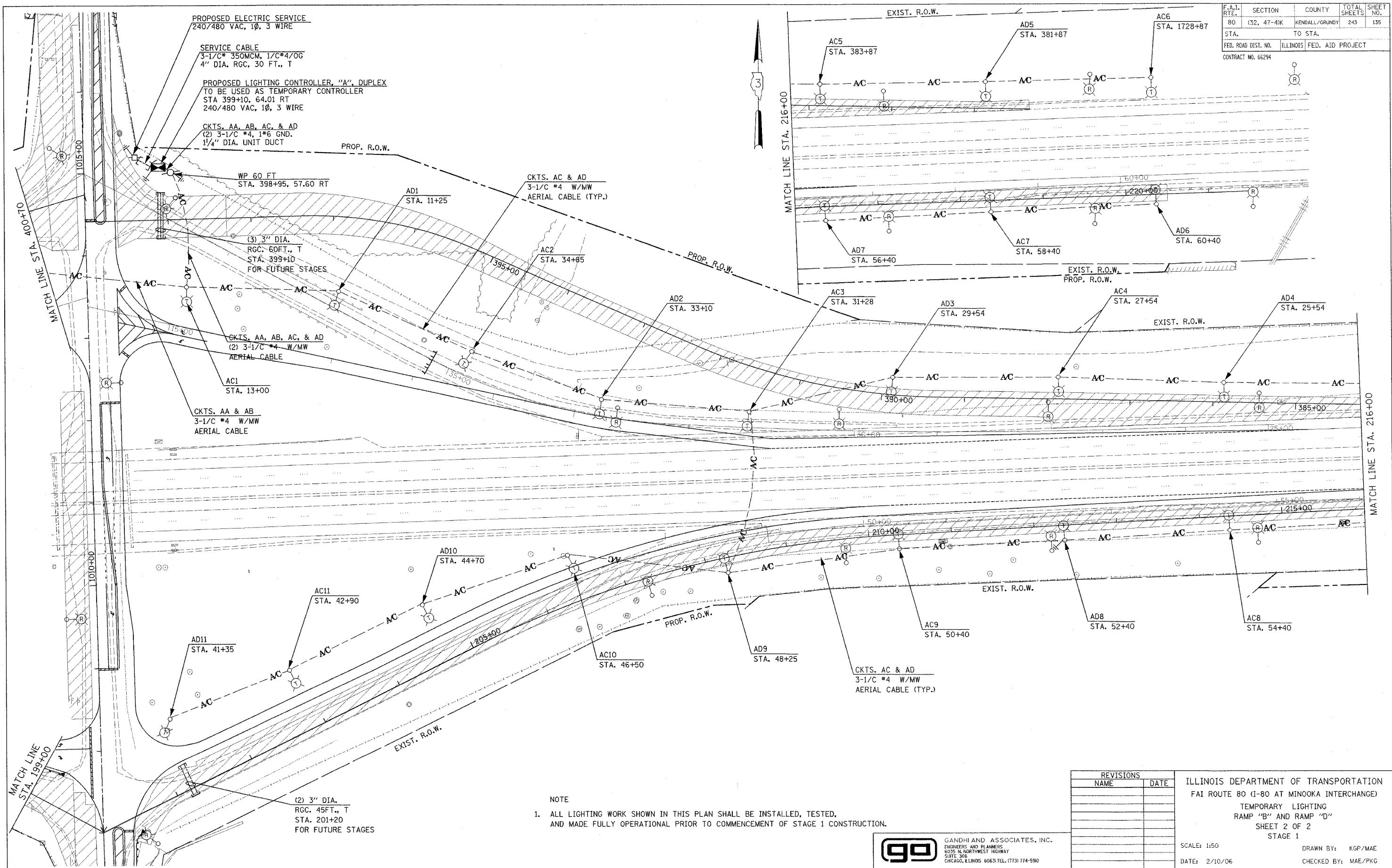


F.A.I. RTE.	SECTION	COUNTY	TOTAL SHEETS	SHEET NO.
80	(32, 47-4)K	KENDALL/GRUNDY	243	135
STA.	TO STA.			
FED. ROAD DIST. NO.	ILLINOIS FED. AID PROJECT			
CONTRACT NO. 66294				



NOTE  
 1. ALL LIGHTING WORK SHOWN IN THIS PLAN SHALL BE INSTALLED, TESTED, AND MADE FULLY OPERATIONAL PRIOR TO COMMENCEMENT OF STAGE 1 CONSTRUCTION.

REVISIONS	
NAME	DATE

ILLINOIS DEPARTMENT OF TRANSPORTATION  
 FAI ROUTE 80 (I-80 AT MINOOKA INTERCHANGE)  
 TEMPORARY LIGHTING  
 RAMP "B" AND RAMP "D"  
 SHEET 2 OF 2  
 STAGE 1

SCALE: 1:50  
 DATE: 2/10/06  
 DRAWN BY: KGP/MAE  
 CHECKED BY: MAE/PKG

**GO** GANDHI AND ASSOCIATES, INC.  
 ENGINEERS AND PLANNERS  
 6035 N. NORTHWEST HIGHWAY  
 SUITE 308  
 CHICAGO, ILLINOIS 60631 TEL. (773) 774-5900

**PATRICK**  
 ENGINEERING INC.  
 LISLE, ILLINOIS