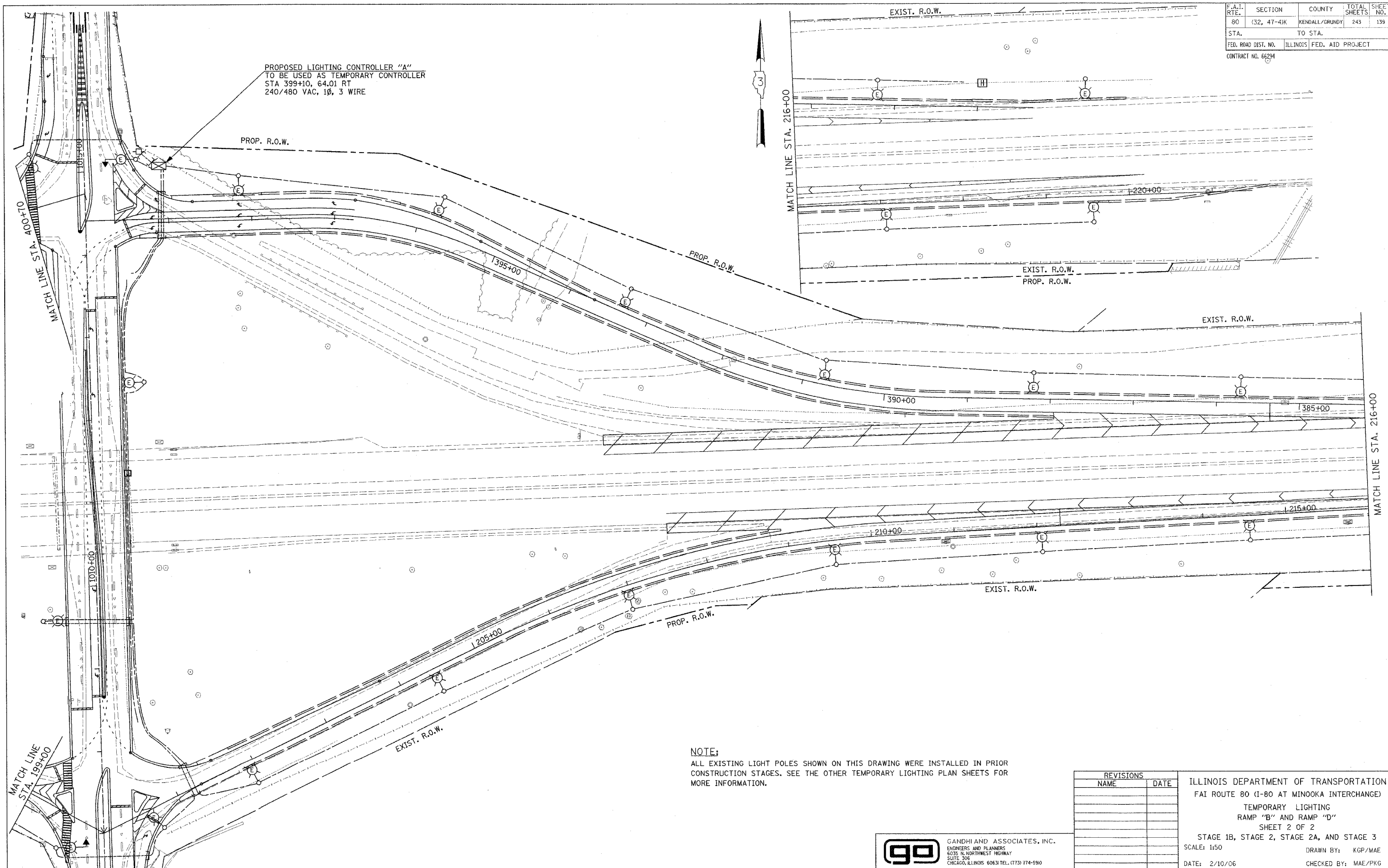


F.A.I. RTE.	SECTION	COUNTY	TOTAL SHEETS	SHEET NO.
80	(32, 47-4)K	KENDALL/GRUNDY	243	139
STA.	TO STA.			
FED. ROAD DIST. NO.	ILLINOIS	FED. AID PROJECT		
CONTRACT NO. 66294				

PROPOSED LIGHTING CONTROLLER "A"
TO BE USED AS TEMPORARY CONTROLLER
STA 399+10, 64.01 RT
240/480 VAC, 1Ø, 3 WIRE



NOTE:
ALL EXISTING LIGHT POLES SHOWN ON THIS DRAWING WERE INSTALLED IN PRIOR CONSTRUCTION STAGES. SEE THE OTHER TEMPORARY LIGHTING PLAN SHEETS FOR MORE INFORMATION.

REVISIONS	
NAME	DATE

ILLINOIS DEPARTMENT OF TRANSPORTATION
FAI ROUTE 80 (I-80 AT MINOOKA INTERCHANGE)
TEMPORARY LIGHTING
RAMP "B" AND RAMP "D"
SHEET 2 OF 2
STAGE 1B, STAGE 2, STAGE 2A, AND STAGE 3
SCALE: 1:50
DATE: 2/10/06
DRAWN BY: KGP/MAE
CHECKED BY: MAE/PKG

GO GANDHI AND ASSOCIATES, INC.
ENGINEERS AND PLANNERS
6035 N. NORTHWEST HIGHWAY
SUITE 306
CHICAGO, ILLINOIS 60631 TEL. (773) 774-5910

PATRICK
ENGINEERING INC.
LISLE, ILLINOIS