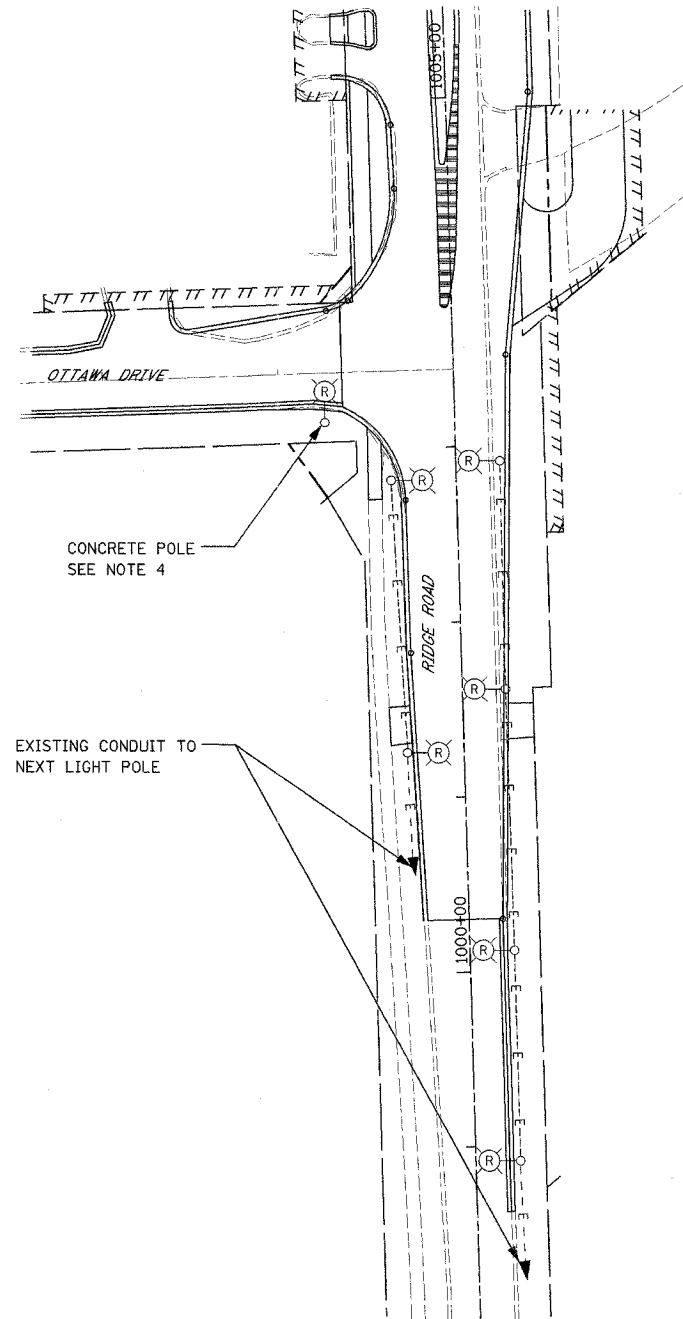


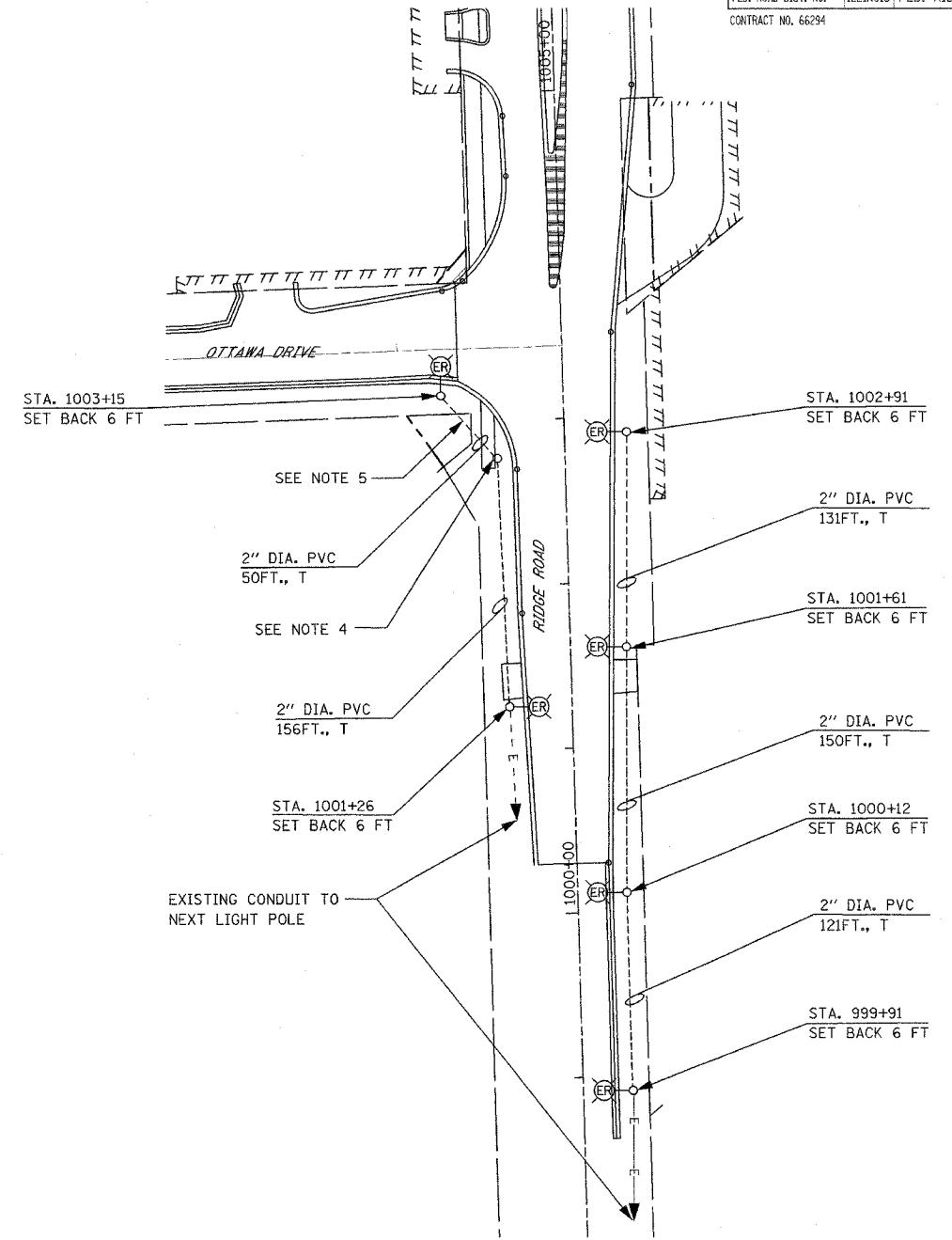
F.A.I. RTE.	SECTION	COUNTY	TOTAL SHEETS	SHEET NO.
80	(32, 47-4)K	KENDALL/GRUNDY	243	144
STA.		TO STA.		
FED. ROAD DIST. NO.		ILLINOIS FED. AID PROJECT		
CONTRACT NO. 66294				

**NOTES:**

1. THE EXISTING LIGHT POLES ON RIDGE ROAD AT OTTAWA DRIVE TO BE REMOVED, AND RELOCATED ARE SHOWN ON THIS PLAN. SIX LIGHT POLES AND ONE LIGHT POLE FOUNDATION ARE AFFECTED. ALL OF THE POLES SHALL BE REMOVED BEFORE CONSTRUCTION BEGINS. THERE SHALL BE NO INTERRUPTION OF POWER TO ANY OTHER LIGHT POLE THAT IS NOT IMPACTED BY THE PROPOSED IMPROVEMENTS. THE CONTRACTOR SHALL COORDINATE WITH OTHER TRADES AS NECESSARY.
2. THE CONTRACTOR SHALL REMOVE, STORE, AND REINSTALL THE RELOCATED LIGHT POLES IN THE LOCATIONS SPECIFIED ON THIS PLAN. ANY DAMAGE TO THE LIGHT POLES, LUMINAIRES, CONDUITS, CABLES, ETC., IS THE RESPONSIBILITY OF THE CONTRACTOR, AND MUST BE REPLACED IN-KIND. NO COMPENSATION WILL BE CONSIDERED OR AWARDED FOR REPLACEMENT OF ANY DAMAGED ITEMS AS A RESULT OF THIS REMOVAL, STORAGE, AND REINSTALLATION PROCESS.
3. EXISTING FOUNDATIONS OF THE REMOVED LIGHT POLES SHALL BE COMPLETELY REMOVED. SPECIAL CARE MUST BE TAKEN WHEN REMOVING THE FOUNDATIONS SO THAT THE EXISTING CONDUITS BETWEEN LIGHT POLES CONNECTED TO THE ELBOWS IN THE FOUNDATIONS ARE NOT DAMAGED. THE EXISTING CONDUITS THAT ARE SHOWN TO REMAIN ARE TO BE REUSED WHEN THE LIGHT POLES ARE REINSTALLED.
4. A NEW FOUNDATION SHALL BE INSTALLED AT THIS LOCATION TO MATCH THE EXISTING FOUNDATION.
5. THIS EXISTING CONCRETE POLE AND CONDUIT IS NOT SHOWN ON ANY EXISTING OR AS-BUILT DRAWING, THEREFORE THE DESIGNER ASSUMES THAT IT IS CONNECTED TO THE NEAREST POLE ON RIDGE ROAD. THE PROPOSED CONNECTION IS SHOWN ON THE RELOCATED POLE LAYOUT. THE CONTRACTOR SHALL VERIFY THE EXISTING CONNECTION AND POWER TO THIS POLE, AND SHALL CONNECT IT THE SAME WAY AS IT IS CURRENTLY CONNECTED.
6. LIGHT POLES SHALL BE SETBACK MINIMUM 6 FEET FROM THE BACK OF CURB TO THE FACE OF THE POLE.
7. THE CONTRACTOR SHALL VERIFY THE LIGHT POLE WIRING SHOWN ON THIS DRAWING. THE CABLE SIZE AND QUANTITY WAS TAKEN FROM THE EXISTING LIGHTING PLANS, AND MUST BE FIELD VERIFIED BY THE CONTRACTOR TO MAKE SURE THAT THE POLES ARE WIRED CORRECTLY.



EXISTING LOCATIONS OF LIGHT POLES TO BE REMOVED



PROPOSED RELOCATED LIGHT POLE LOCATIONS

**LEGEND**

- R EXISTING LIGHT POLE TO BE REMOVED, AND RELOCATED
- ER NEW LOCATION OF RELOCATED LIGHT POLES
- E--- EXISTING UNDERGROUND CONDUITS
- PROPOSED UNDERGROUND CONDUIT, 2" PVC WITH 2 @ 3-1/C #4, WITH 2 @ 3-1/C #6 & 2 @ 1/C #6 GROUND, 600V, XLP-TYPE USE.

REVISIONS	
NAME	DATE

ILLINOIS DEPARTMENT OF TRANSPORTATION  
 FAI ROUTE 80 (I-80 AT MINOOKA INTERCHANGE)  
 RELOCATION OF EXISTING LIGHTING  
 ON RIDGE ROAD AT  
 OTTAWA DRIVE

SCALE: 1:50  
 DATE: 2/10/06

DRAWN BY: KGP/MAE  
 CHECKED BY: MAE/PKG

**GO** GANDHI AND ASSOCIATES, INC.  
 ENGINEERS AND PLANNERS  
 6035 N. NORTHWEST HIGHWAY  
 SUITE 308  
 CHICAGO, ILLINOIS 60631 TEL: (773) 774-590

**PATRICK**  
 ENGINEERING INC.  
 LISLE, ILLINOIS