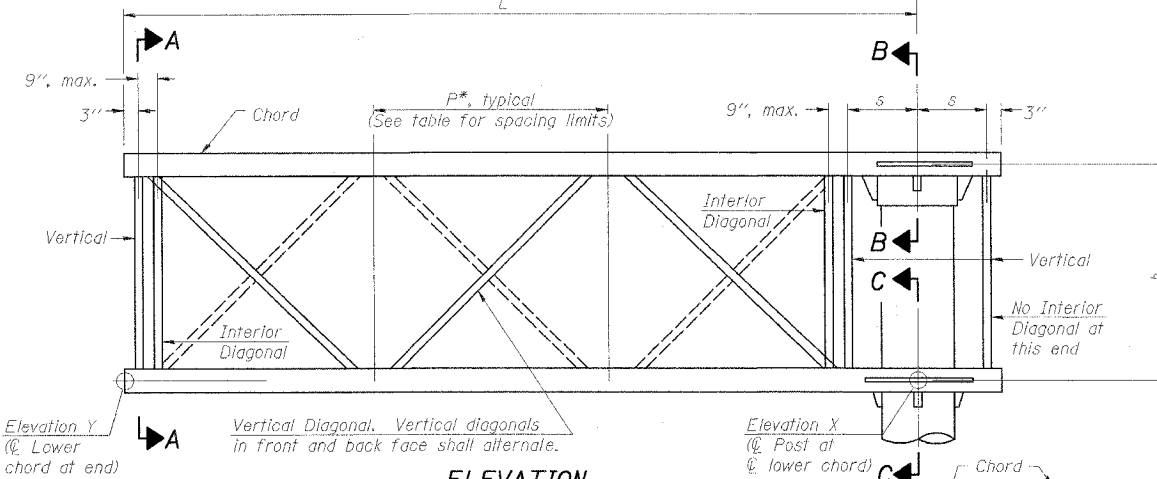
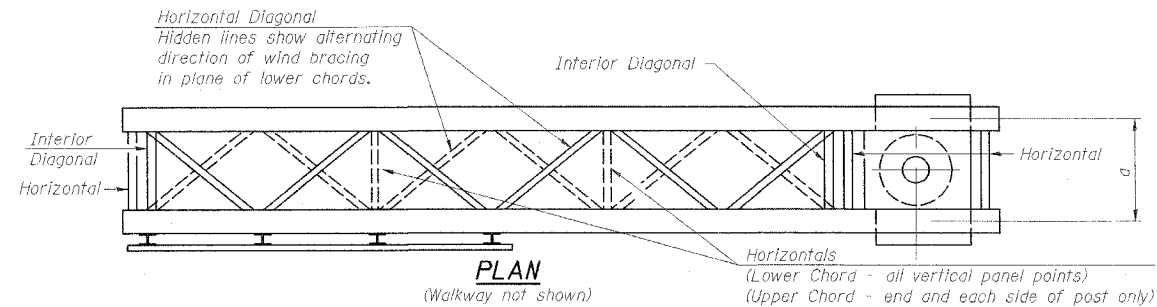
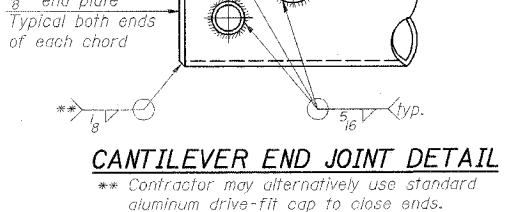
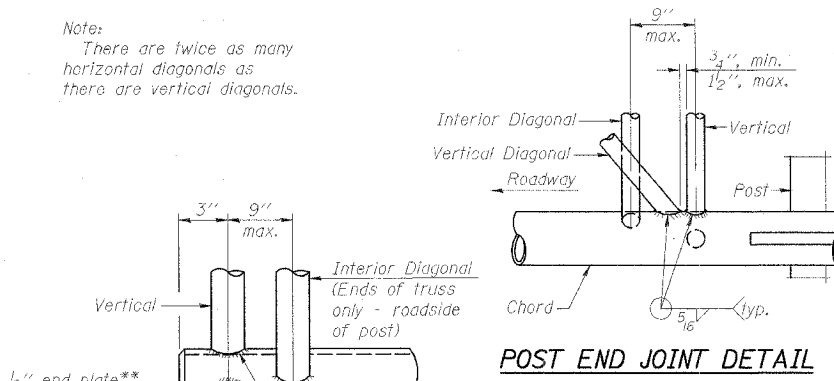


F.A.I. RTE.	SECTION	COUNTY	TOTAL SHEETS	SHEET NO.
80	(32, 47-4K)	KENDALL/GRUNDY	243	157
STA.	TO STA.			
FED. ROAD DIST. NO.	ILLINOIS	FED. AID PROJECT		
CONTRACT NO. 66294				

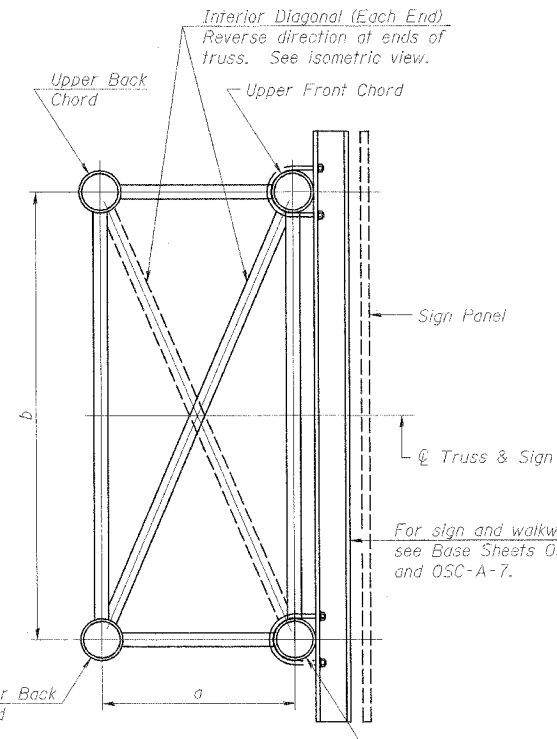


**ELEVATION**  
(Sign and walkway omitted for clarity)  
**TYPICAL TRUSS UNIT**  
For Section B-B and Section C-C, see Base Sheet OSC-A-3.

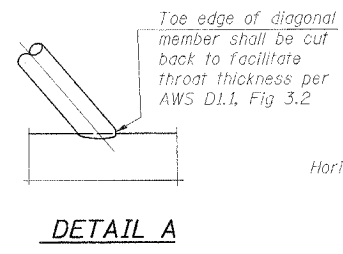
Note:  
There are twice as many horizontal diagonals as there are vertical diagonals.



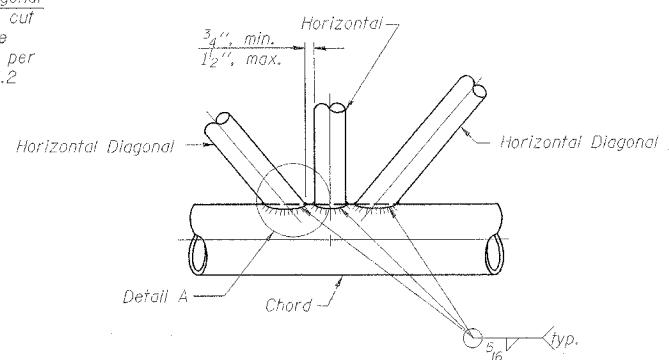
\*\* Contractor may alternatively use standard aluminum drive-fit cap to close ends.



**SECTION A-A**

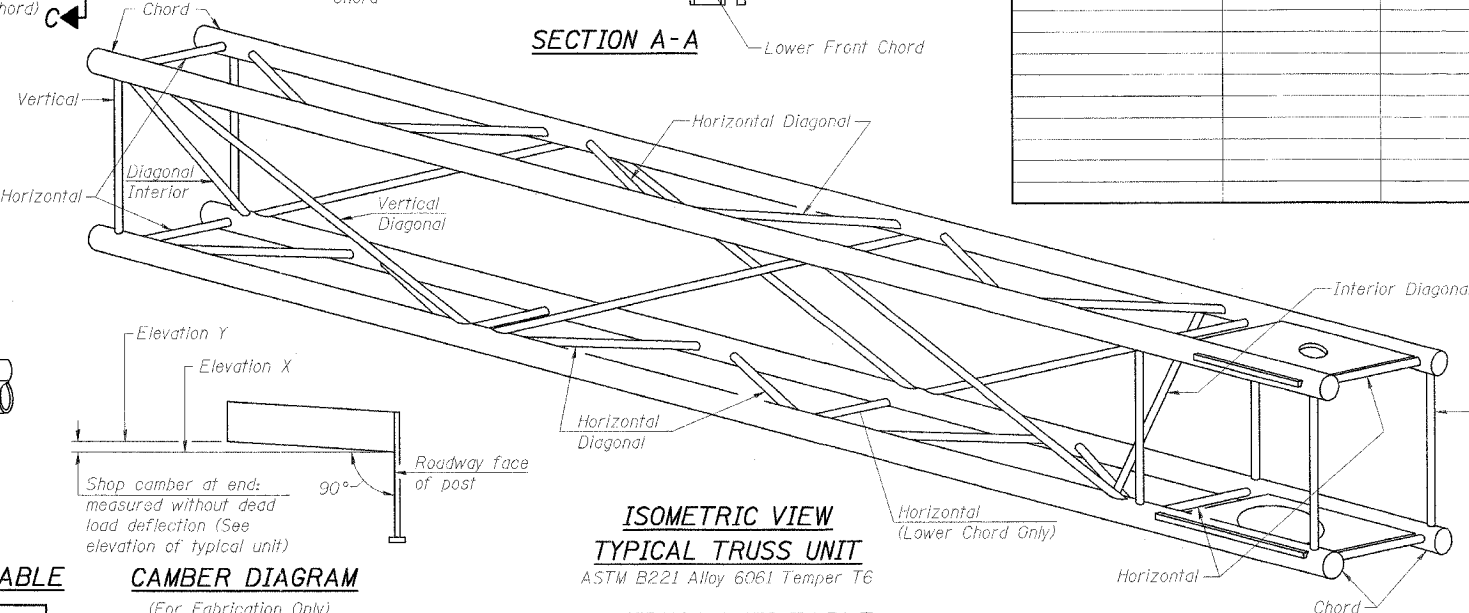


**DETAIL A**

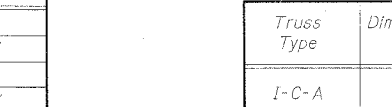


**TRUSS INTERIOR JOINT DETAIL**

Structure Number	Station	Truss Type	Design Length (L)	Number of Panels Per Unit	Panel Length (P)*
3C0321080R121.5	184+07.00	II-C-A	30'	7	4.0'
3C0471080L122.1	381+94.00	II-C-A	30'	7	4.0'



**ISOMETRIC VIEW**  
**TYPICAL TRUSS UNIT**  
ASTM B221 Alloy 6061 Temper T6



**CAMBER DIAGRAM**  
(For Fabrication Only)

**SHOP CAMBER TABLE**

Unit Length (L)	Shop Camber at End
15'	1 1/2"
16'-17'	1 3/4"
18'-20'	2"
21'-22'	2 1/4"
23'-25'	2 1/2"
26'-27'	2 3/4"
28'-30'	3"
31'-32'	3 1/4"
33'-35'	3 1/2"
36'-37'	4"
38'-40'	4 1/2"

**TRUSS UNIT TABLE**

Truss Type	Dimension "a"	Dimension "b"	Dimension "s"	Limits for Panel Spacing (P)*	Up. & Low. Chord		Verticals; Horizontals; Vertical, Horizontal, and Interior Diagonals	
					O.D.	Wall	O.D.	Wall
I-C-A	24"	54"	16"	36" min. to 48" max.	5"	5/16"	2 1/2"	5/16"
II-C-A	36"	66"	21"	42" min. to 54" max.	6 1/2"	5/16"	3 1/4"	5/16"
III-C-A (35' Max.)	36"	84"	21"	48" min. to 66" max.	7"	3/8"	3 1/2"	3/8"
III-C-A (>35' to 40')	36"	84"	21"	48" min. to 66" max.	8"	3/8"	3 1/2"	3/8"

\*P =  $\frac{L-s-3"}{\# \text{ Panels}}$

NUMBER	REVISION	DATE

**CANTILEVER SIGN STRUCTURES**  
**TRUSS DETAILS**  
**ALUMINUM TRUSS & STEEL POST**

ILLINOIS DEPARTMENT OF TRANSPORTATION  
FAI ROUTE 80 (I-80 AT MINOOKA INTERCHANGE)

SCALE: NONE  
DATE: 2/10/06  
DRAWN BY: NJS  
CHECKED BY: JJC

**PATRICK**  
ENGINEERING INC.  
LISLE, ILLINOIS