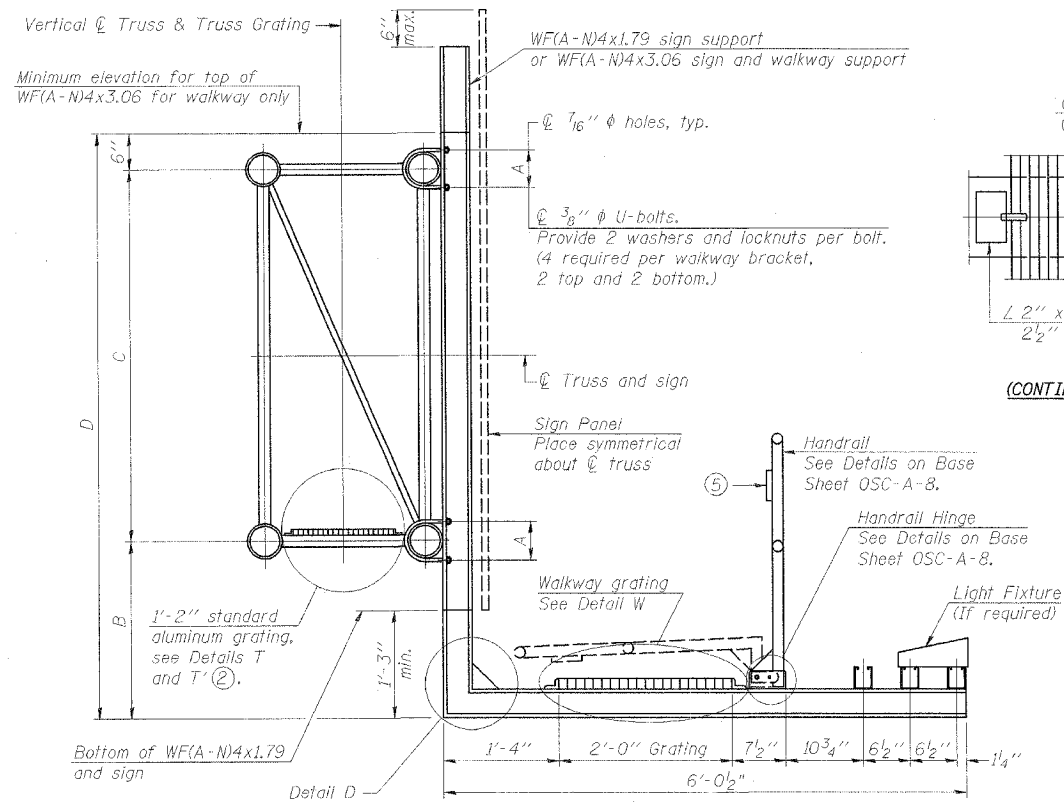
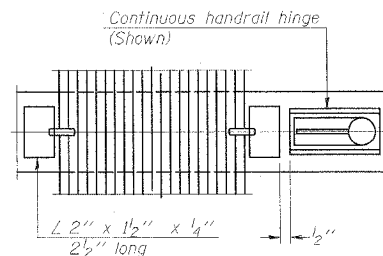


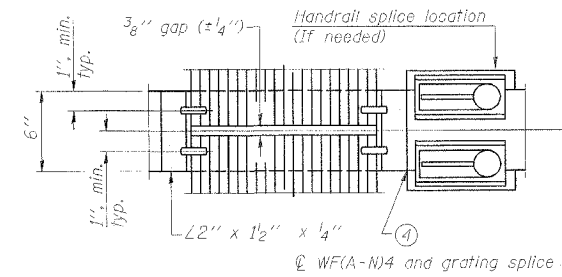
F.A.I. RTE.	SECTION	COUNTY	TOTAL SHEETS	SHEET NO.
80	32, 47-41K	KENDALL/GRUNDY	243	162
STA.	TO STA.			
FED. ROAD DIST. NO.	ILLINOIS	FED. AID PROJECT		
CONTRACT NO. 66294				



**SECTION B-B**

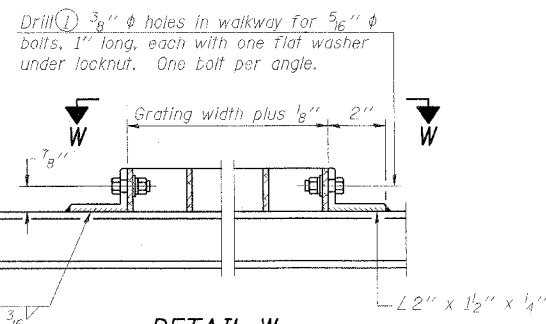


**(CONTINUOUS WALKWAY GRATING)**

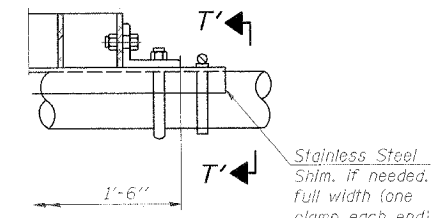


**SECTION W-W**

**(AT WALKWAY GRATING SPLICE)**

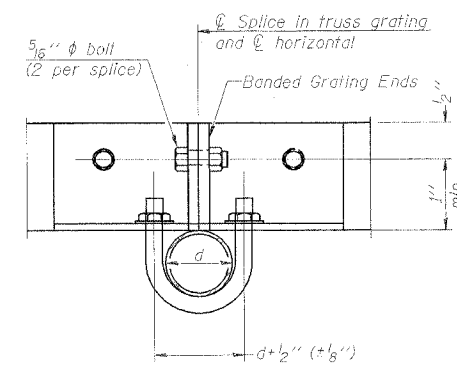


**DETAIL W**  
(Walkway grating)

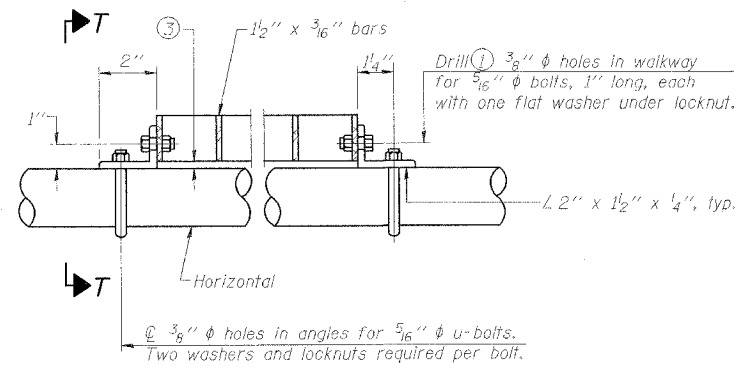


**DETAIL T'**  
(Truss grating splice)

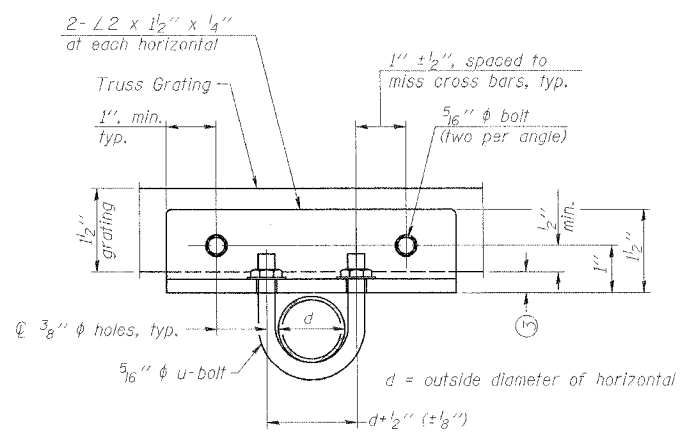
Details not shown same as Detail T. Alternate materials may be used subject to the Engineer's review and approval.



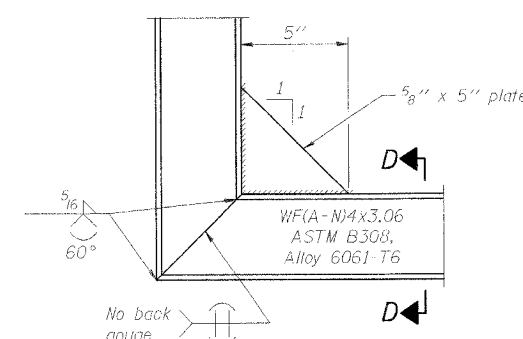
**SECTION T'-T'**



**DETAIL T**  
(Truss grating at horizontal)

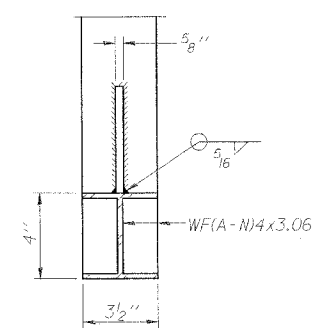


**SECTION T-T'**



**DETAIL D**

(See Detail P, Base Sheet OSC-A-8.)



**SECTION D-D**

NUMBER	REVISION	DATE

- Drilling holes in grating may be done in shop or field, based on Contractor's preference and subject to accurate alignment.
- When truss grating must be spliced, use suggested detail or other methods subject to the Engineer's review and approval. Locate splice to avoid interference between cross bars and bolt locations.
- Tube to grating gap may vary from 0 to 1/2", max. to align walkway, allow for camber, etc.
- If Handrail Joint present, weld angle to WF(A-N)4 and 1/4" extension bars. (See Base Sheet OSC-A-8)
- L 1/2" x 1/2" x 2" welded to handrail posts to protect locations that contact grating.

Structure Number	Station	A	B	C	D
3C0321080R121.5	184+07.00	7"	1'-6"	5.5'	7'-6"
3C0471080L122.1	381+94.00	7"	1'-6"	5.5'	7'-6"

**CANTILEVER SIGN STRUCTURES  
WALKWAY DETAILS  
ALUMINUM TRUSS & STEEL POST**

ILLINOIS DEPARTMENT OF TRANSPORTATION  
FAI ROUTE 80 (I-80 AT MINOOKA INTERCHANGE)

SCALE: NONE  
DATE: 2/10/06  
DRAWN BY: NJS  
CHECKED BY: JJC