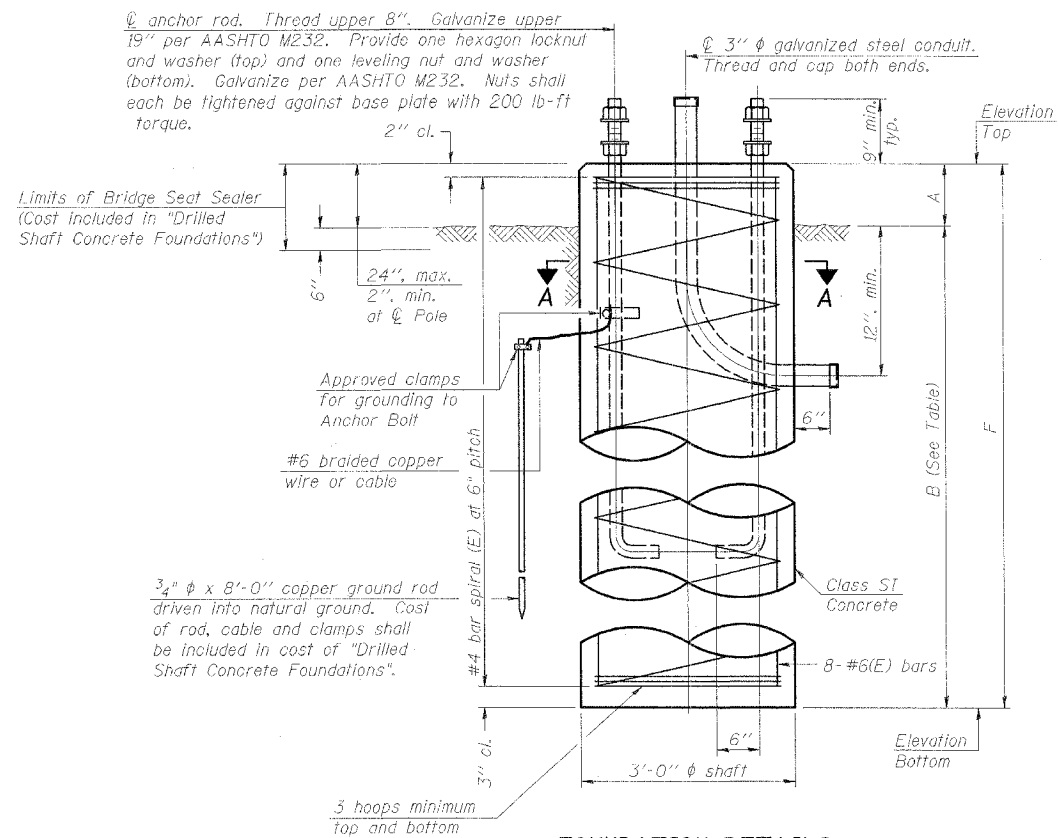


F.A.I. RTE.	SECTION	COUNTY	TOTAL SHEETS	SHEET NO.
80	(32, 47-4K)	KENDALL/GRUNDY	243	166
STA.	TO STA.			
FED. ROAD DIST. NO.	ILLINOIS	FED. AID PROJECT		
CONTRACT NO. 66294				

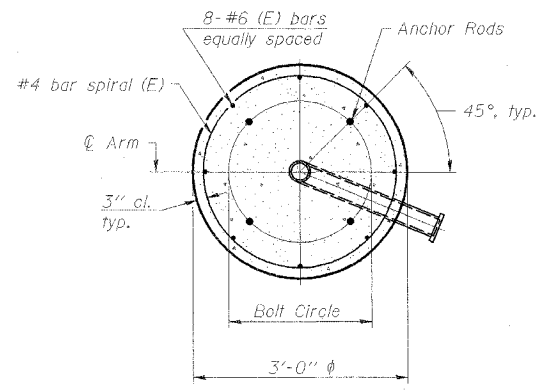


Span (Ft.)	B (Ft.)
Span $\leq$ 65	12
65 < Span $\leq$ 85	13
85 < Span $\leq$ 100	14

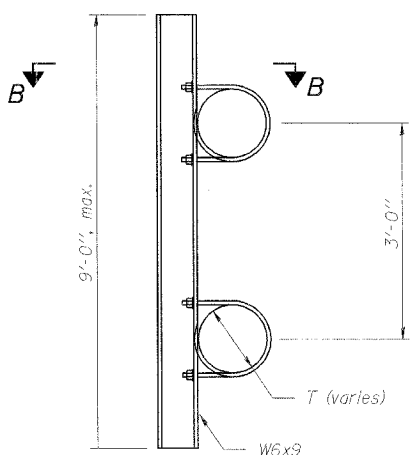
**FOUNDATIONS:**  
 The foundation dimensions shown are based on the presence of mostly cohesive soils with an average Unconfined Compressive Strength ( $Q_u$ ) of at least 1.25 tsf, which must be determined by previous soil investigations at the jobsite. When other conditions are indicated, the boring data will be included in the plans and the foundation dimensions shown will be the result of site specific designs.  
 If the conditions encountered are different than those indicated, the Contractor shall notify the Engineer to determine if the foundation dimensions need to be modified. If dimensions "B" or "F" are revised by more than 12" by the Contractor, "as-built" plans shall be prepared and submitted to the District Bureau of Operations for future reference.  
 No sonotubes or decomposable forms shall be used below the lower conduit entrance. Permanent metal forms or other shielding may not be left in place below that elevation without the Engineer's written permission.  
 Concrete shall be placed monolithically, without construction joints.  
 Backfill shall be placed per Article 502 of Standard Specification and prior to erection of support column.  
 A normal surface finish followed by a Bridge Seat Sealer application will be required on concrete surfaces above the lowest elevation 6" below finished ground line. Cost included in "Drilled Shaft Concrete Foundation".

**FOUNDATION DETAILS**

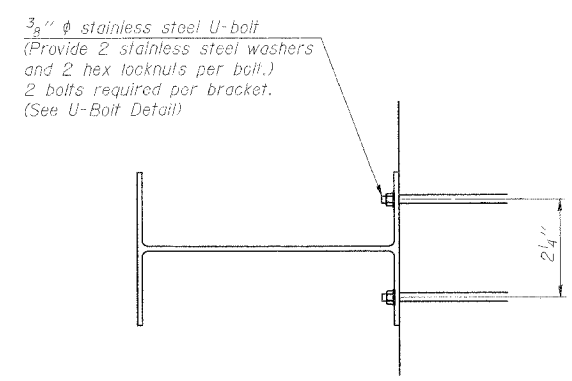
Typical, except conduit may only be required at one foundation. Provide conduit openings both poles.



**SECTION A-A**

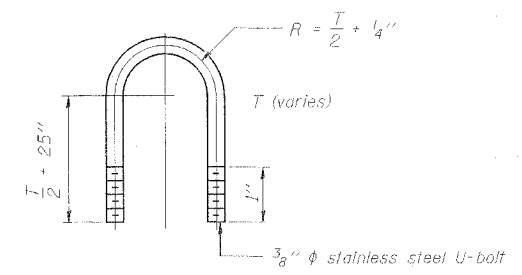


**SIGN MOUNTING BRACKET**



**SECTION B-B**

6'-0" maximum spacing.  
 2'-0" maximum sign overhang beyond end bracket.



**U-BOLT DETAIL**  
(Typical)

**DUAL MONOTUBE SIGN STRUCTURE**

ILLINOIS DEPARTMENT OF TRANSPORTATION  
 FAI ROUTE 80 (I-80 AT MINOOKA INTERCHANGE)

SCALE: NONE  
 DATE: 2/10/06  
 DRAWN BY: NJS  
 CHECKED BY: JJC