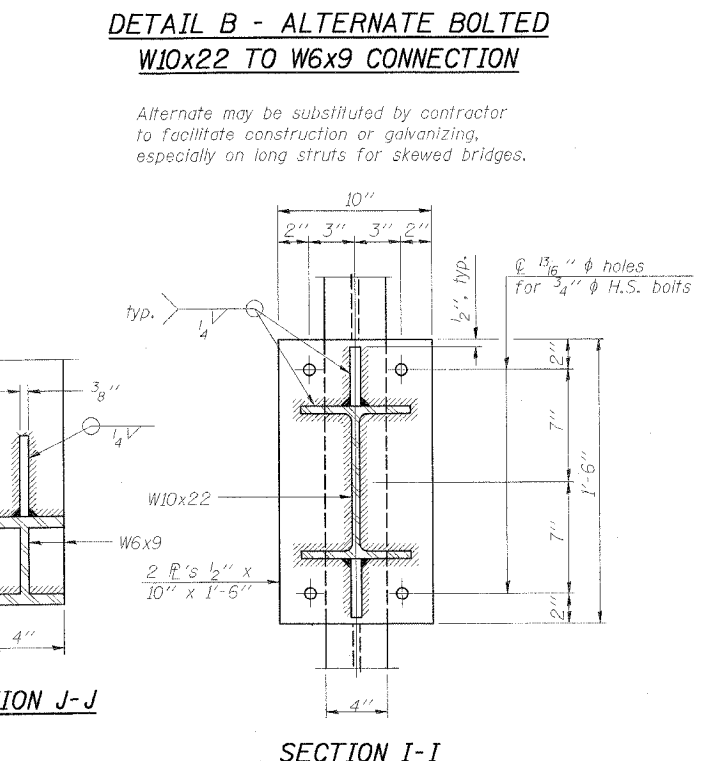
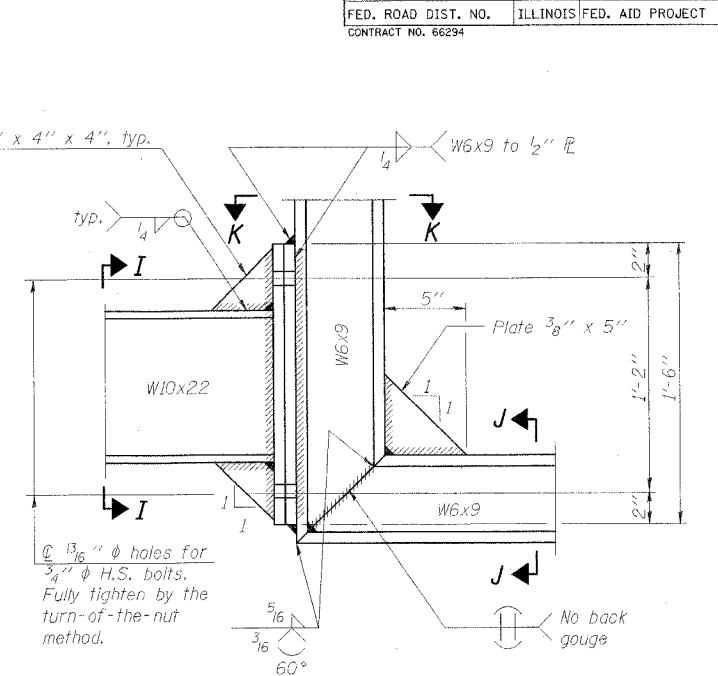
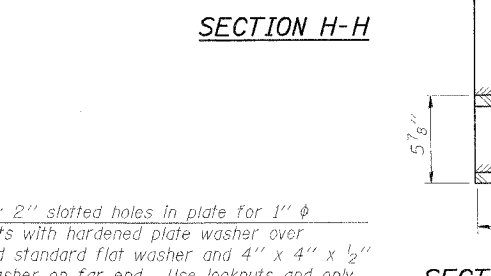
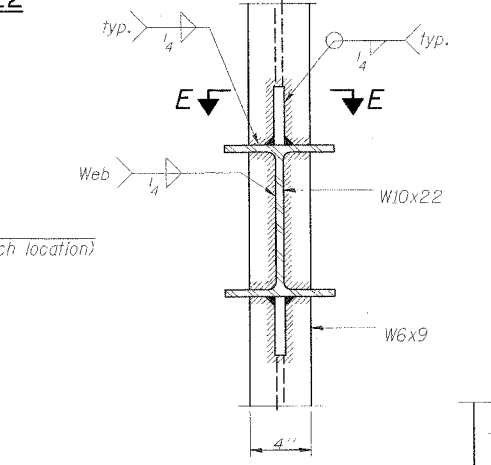
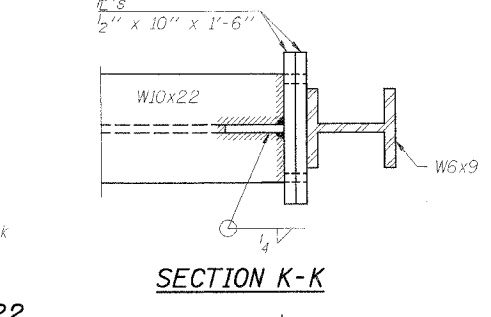
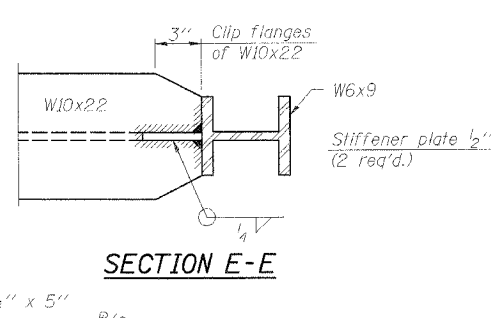
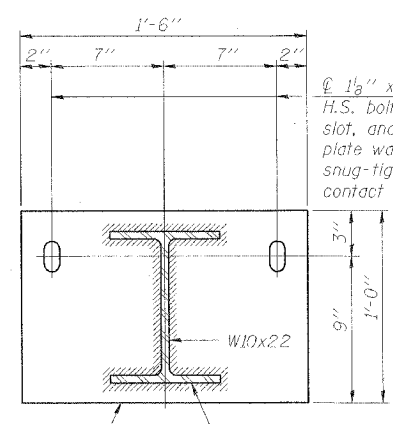
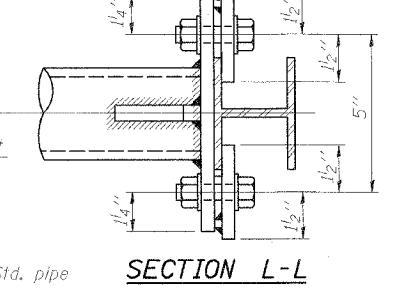
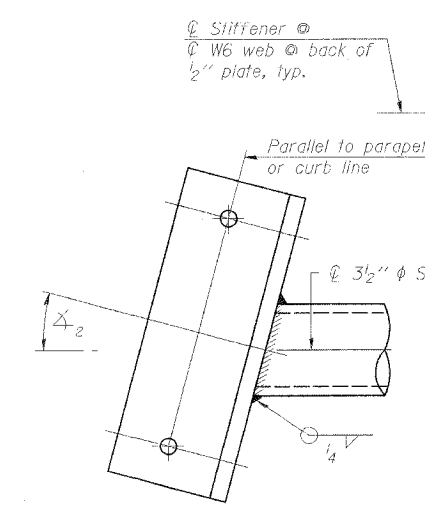


**VIEW F-F** \*\*  $\frac{13}{16}$ "  $\phi$  holes for galvanizing. After galvanizing, install  $\frac{7}{8}$ "  $\phi$  A307 hot-dip galvanized bolt to close hole in angle. (No bolt required in  $\frac{1}{2}$ " plate.)

**CLAMP PLATE DETAILS**



**DETAIL B - ALTERNATE BOLTED W10x22 TO W6x9 CONNECTION**

Alternate may be substituted by contractor to facilitate construction or galvanizing, especially on long struts for skewed bridges.

NUMBER	REVISION	DATE

REVISIONS	
NAME	DATE

ILLINOIS DEPARTMENT OF TRANSPORTATION  
FAI ROUTE 80  
(I-80 AT MINOOKA INTERCHANGE)  
BRIDGE MOUNT SIGN STRUCTURES  
CONNECTION DETAILS

SCALE: None  
DATE: 2/10/06  
DRAWN BY: M. Tryon  
CHECKED BY: A. Yargiooglu