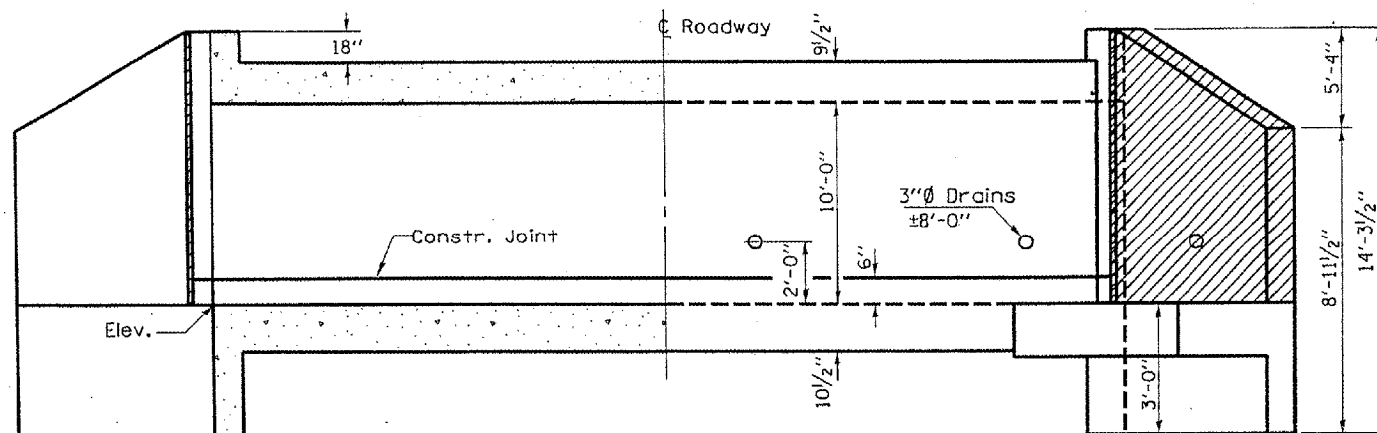
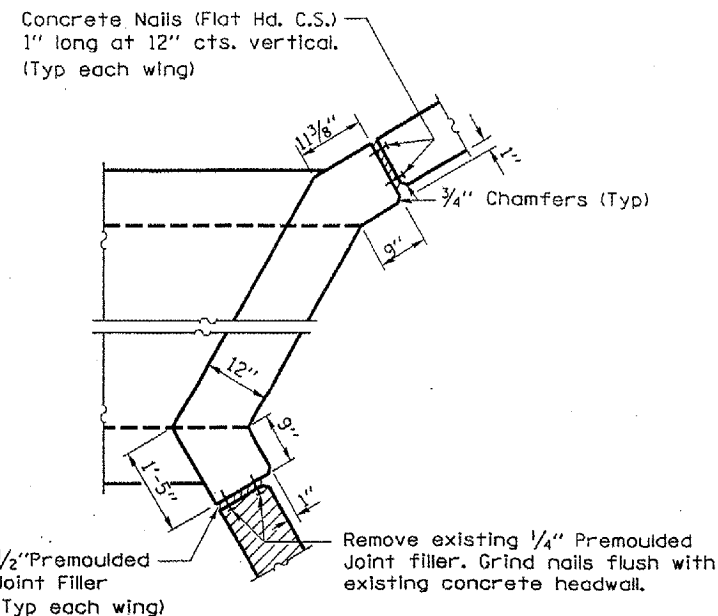


F.A.P. RTE.	SECTION	COUNTY	TOTAL SHEETS	SHEET NO.
623	(30)I-1	LASALLE	12	6
FED. ROAD DIST. NO.		ILLINOIS		

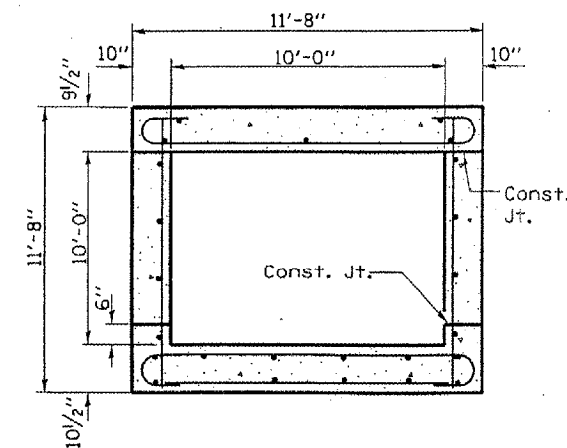


HALF LONG. SECT. HALF ELEVATION
LOOKING WEST

Dimensions at Rt. L's to ϕ Roadway



CORNER DETAIL



SECTION THRU BARREL

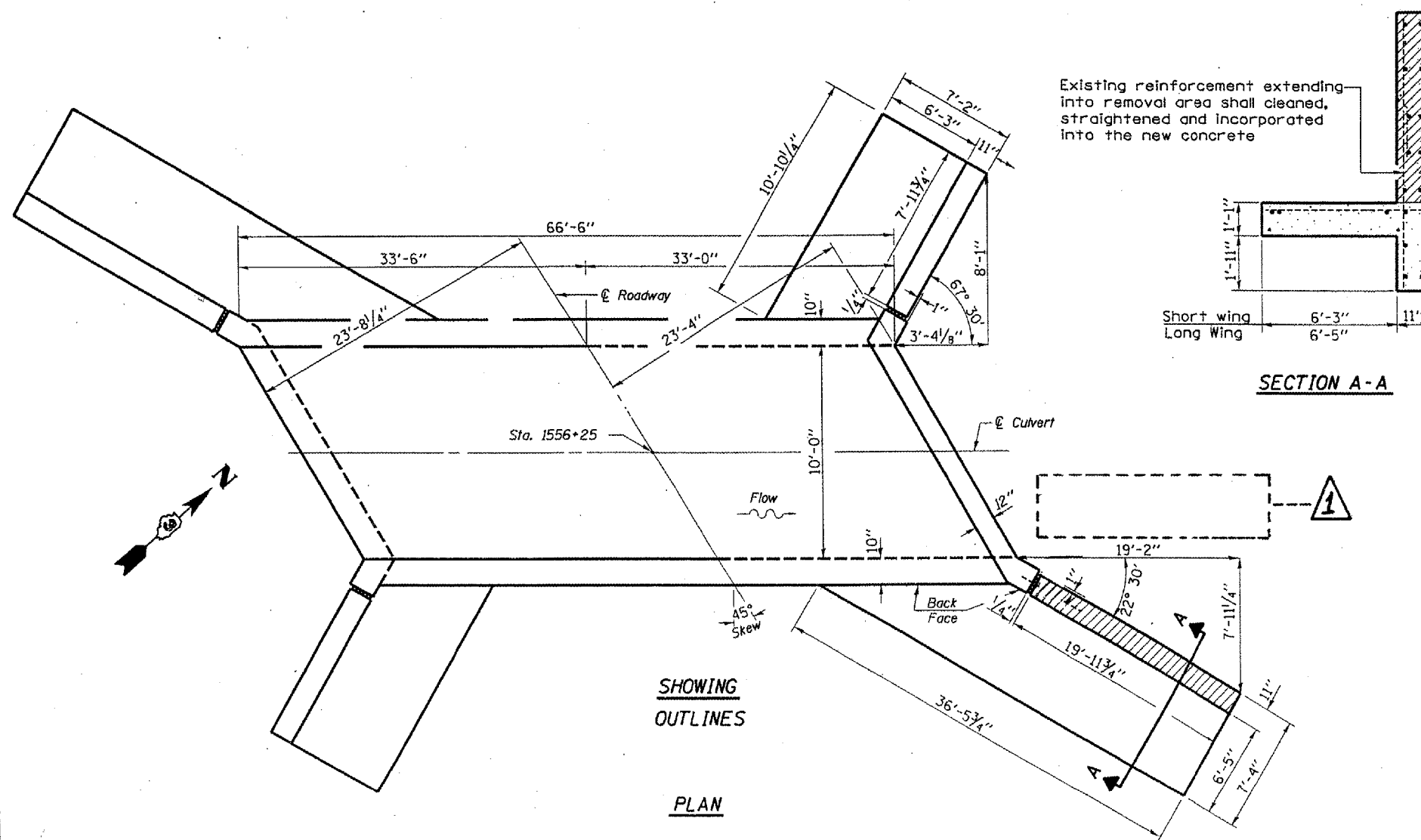
General Notes

PLAN DIMENSIONS AND DETAILS RELATIVE TO THE EXISTING STRUCTURE HAVE BEEN TAKEN FROM EXISTING PLANS AND ARE SUBJECT TO NOMINAL CONSTRUCTION VARIATIONS. IT SHALL BE THE CONTRACTOR'S RESPONSIBILITY TO VERIFY SUCH DIMENSIONS AND DETAILS IN THE FIELD AND TO MAKE NECESSARY APPROVED ADJUSTMENTS PRIOR TO CONSTRUCTION OR ORDERING OF MATERIALS. SUCH VARIATIONS SHALL NOT BE CAUSE FOR ADDITIONAL COMPENSATION FOR A CHANGE IN THE SCOPE OF THE WORK, HOWEVER, THE CONTRACTOR WILL BE PAID FOR THE QUANTITY ACTUALLY FURNISHED AT THE UNIT BID FOR THE WORK.

THE CONTRACTOR SHALL EXERCISE CARE DURING CONCRETE REMOVAL OPERATIONS SO THAT THE EXISTING CONCRETE FOOTING IS NOT DAMAGED. IF THE EXISTING FOOTING IS DAMAGED DUE TO THE CONTRACTOR'S OPERATIONS, THE FOOTING SHALL BE REPAIRED TO THE SATISFACTION OF THE ENGINEER, AT THE CONTRACTOR'S EXPENSE.

1 IF THE EXISTING FOOTING IS DAMAGED OR DETERIORATED, DUE IN NO PART TO THE CONTRACTOR'S OPERATIONS, THE FOOTING SHALL BE REPAIRED TO THE SATISFACTION OF THE ENGINEER AND SHALL BE PAID FOR ACCORDING TO ARTICLE 109.04 OF THE STANDARD SPECIFICATIONS.

CONCRETE REMOVAL

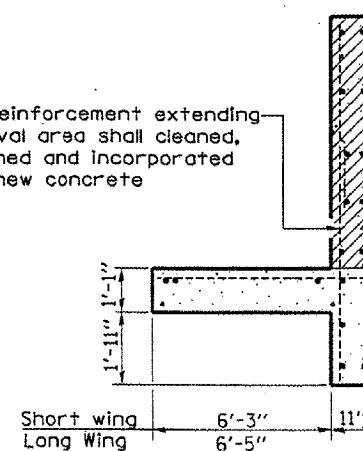


**SHOWING
OUTLINES**

PLAN

Existing reinforcement extending into removal area shall be cleaned, straightened and incorporated into the new concrete

Remove concrete flush with existing footing



SECTION A-A

EXISTING DESIGN STRESSES

$f_y = 20,000 \text{ psi}$
 $f'_c = 1,200 \text{ psi}$

LOADING HS 20

BILL OF MATERIAL

CONCRETE REMOVAL CU. YD. 5.9

REVISIONS	
NAME	DATE

ILLINOIS DEPARTMENT OF TRANSPORTATION

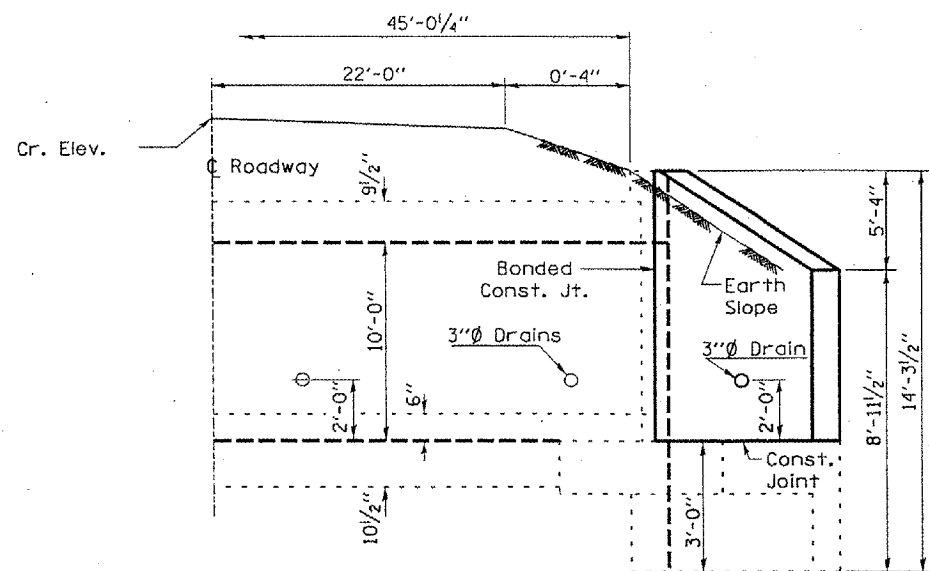
EXISTING CULVERT DETAILS
F.A.P. 623 (U.S. 6) SECTION (30)I-1
LASALLE COUNTY
STA. 1556+25

DATE 12/20/2005

DRAWN BY RLW

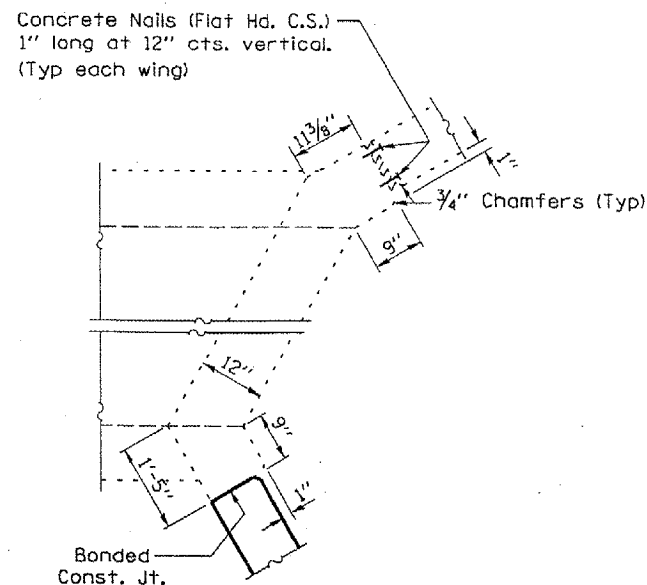
Date: 11/07/2005
File: c:\projects\cm324\details.dgn

F.A.P. RTE.	SECTION	COUNTY	TOTAL SHEETS	SHEET NO.
623	(30)I-1	LASALLE	12	7
FED. ROAD DIST. NO. - ILLINOIS				

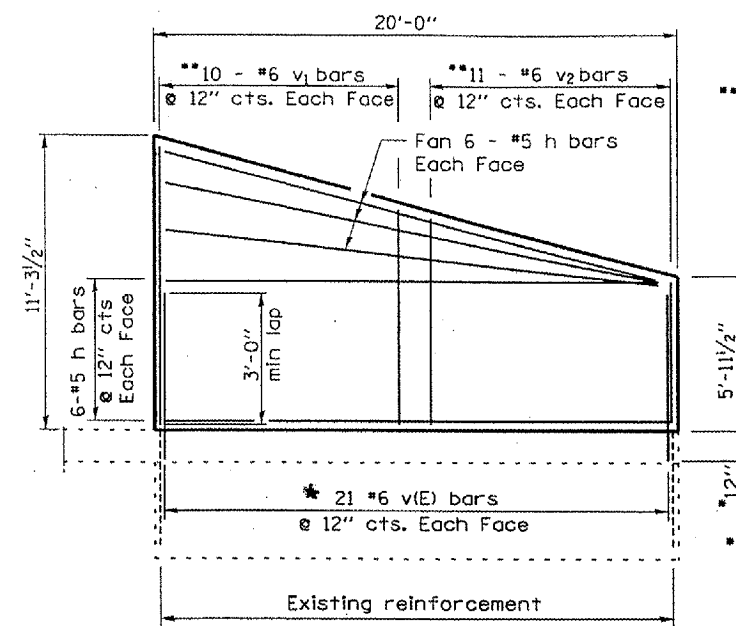


HALF ELEVATION

Dimensions at Rt. L's to \perp Roadway



CORNER DETAIL



ELEVATION

**Order v₁ and v₂ bars full length and cut to fit in field

*Drill and epoxy grout #6 v(E) bars into existing footing

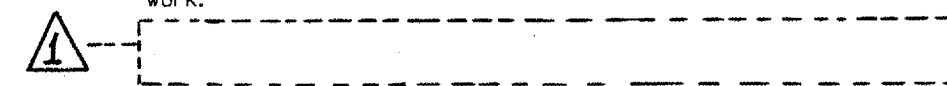
EXISTING DESIGN STRESSES

$T_y = 60,000 \text{ psi}$
 $f'_c = 3,500 \text{ psi}$

LOADING HS 20

NOTES:

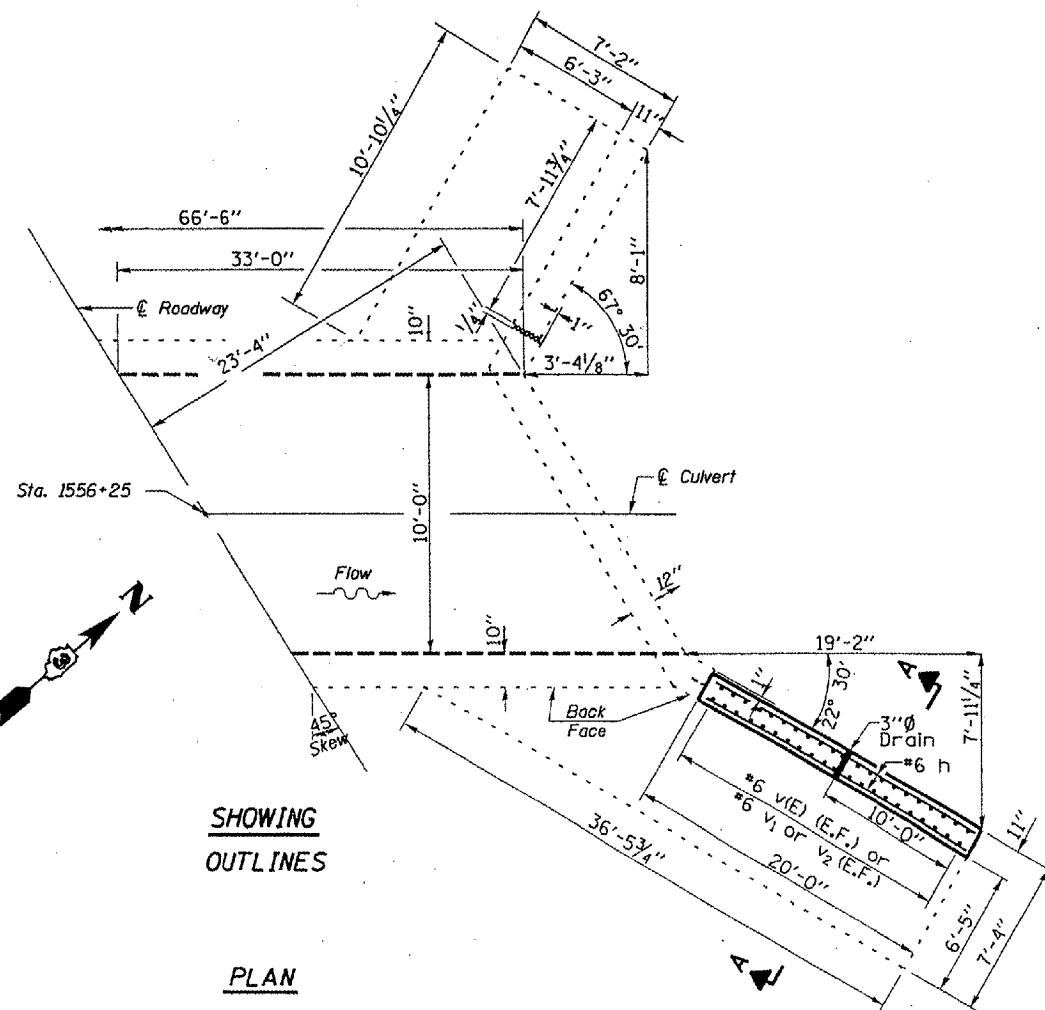
Plan dimensions and details relative to existing structure have been taken from existing plans and are subject to nominal construction variations. It shall be the Contractor's responsibility to verify such dimensions and details in the field and make necessary approved adjustments prior to construction or ordering of materials. Such variations shall not be cause for additional compensation for a change in the scope of the work, however, the Contractor will be paid for the quantity actually furnished at the unit price bid for the work.



Reinforcement bars designated (E) shall be epoxy coated.

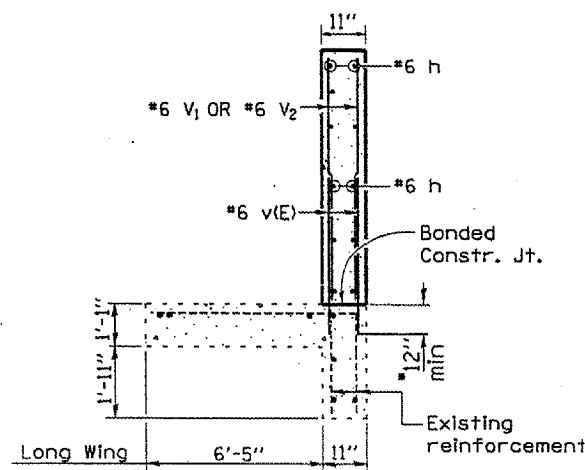
All construction joints shall be bonded.

The top of footing and the back vertical face of the wing wall shall be waterproofed according to the Special Provision for "Waterproofing Membrane Special", plan details and as directed by the Engineer.



SHOWING
OUTLINES

PLAN



SECTION A-A

BILL OF MATERIAL

Bar	No.	Size	Length	Shape
h	24	#5	19'-9"	—
v(E)	42	#6	4'-6"	—
v ₁	20	#6	11'-0"	—
v ₂	22	#6	8'-4"	—
Concrete Structures		Cu. Yd.	5.9	
Reinforcement Bars, Epoxy Coated		Pound	284	
Reinforcement Bars, Epoxy Coated		Pound	1100	

Reinforcement designated (E) shall be Epoxy Coated

REVISIONS	
NAME	DATE

ILLINOIS DEPARTMENT OF TRANSPORTATION

PROPOSED CULVERT DETAILS

F.A.P. 623 (U.S. 6) SECTION (30)I-1

LASALLE COUNTY

STA. 1556 + 25

DATE 12/20/2005

DRAWN BY RLW

VHV 01/03/06