

F.A.P. RTE.	SECTION	COUNTY	TOTAL SHEETS	SHEET NO.
623	(30)1-1	LASALLE	12	1

INDEX OF SHEETS

1. COVER SHEET
2. GENERAL NOTES
3. SUMMARY OF QUANTITIES
4. GENERAL ROADWAY PLAN
5. PAVEMENT REMOVAL DETAILS
6. EXISTING CULVERT DETAILS
7. PROPOSED CULVERT DETAILS
8. MEMBRANE WATERPROOFING (SPECIAL) DETAILS
9. PAVEMENT REPLACEMENT DETAILS
10. TRAFFIC CONTROL AND PROTECTION, STANDARD 701321 (SPECIAL)
11. TRAFFIC CONTROL AND PROTECTION, STANDARD 701321 (SPECIAL)
12. PAVEMENT MARKING DETAILS

STANDARDS

- 000001-04 STANDARD SYMBOLS, ABBREVIATIONS AND PATTERNS
- 001001 AREAS OF REINFORCEMENT BARS
- 001006 DECIMAL OF AN INCH AND OF A FOOT
- 420001-06 PAVEMENT JOINTS
- 420701-01 PAVEMENT FABRIC
- 442101-05 CLASS B PATCHES
- 482006-01 BITUMINOUS SHOULDER ADJACENT TO RIGID PAVEMENT
- 630001-06 STEEL PLATE BEAM GUARDRAIL
- 630101-06 GUARDRAIL MOUNTED ON EXISTING CULVERTS
- 701001-01 OFF-ROAD OPERATIONS 2L, 2W, MORE THAN 4.5 m (15') AWAY
- 701006-02 OFF-ROAD OPERATIONS 2L, 2W, 4.5 m (15') TO 600 mm (24") FROM PAVEMENT EDGE
- 701201-02 LANE CLOSURE, 2L, 2W, DAY ONLY, FOR SPEEDS P 45 MPH
- 701301-02 LANE CLOSURE, 2L, 2W, SHORT TIME OPERATIONS
- 702001-06 TRAFFIC CONTROL DEVICES
- 704001-02 TEMPORARY CONCRETE BARRIER

MICROFILMED _____
 REEL NUMBER _____
 AWARDED _____
 RESIDENT ENGINEER _____
 AS BUILT CHANGES WERE MADE
 ON THE FOLLOWING SHEETS _____

J.U.L.I.E.
 JOINT UTILITY LOCATION INFORMATION FOR EXCAVATION
 1-800-892-0123

DISTRICT 3 NO. (815) 434-6131

PROJECT ENGINEER: TOM HUFNAGEL (815) 434-8418
UNIT CHIEF: RON WOODSHANK (815) 434-8419

CONTRACT NO. 66621

STATE OF ILLINOIS
DEPARTMENT OF TRANSPORTATION
DIVISION OF HIGHWAYS

PROPOSED
HIGHWAY PLANS

FAP ROUTE 623 (U.S. ROUTE 6)

SECTION (30)1-1

PROJECT

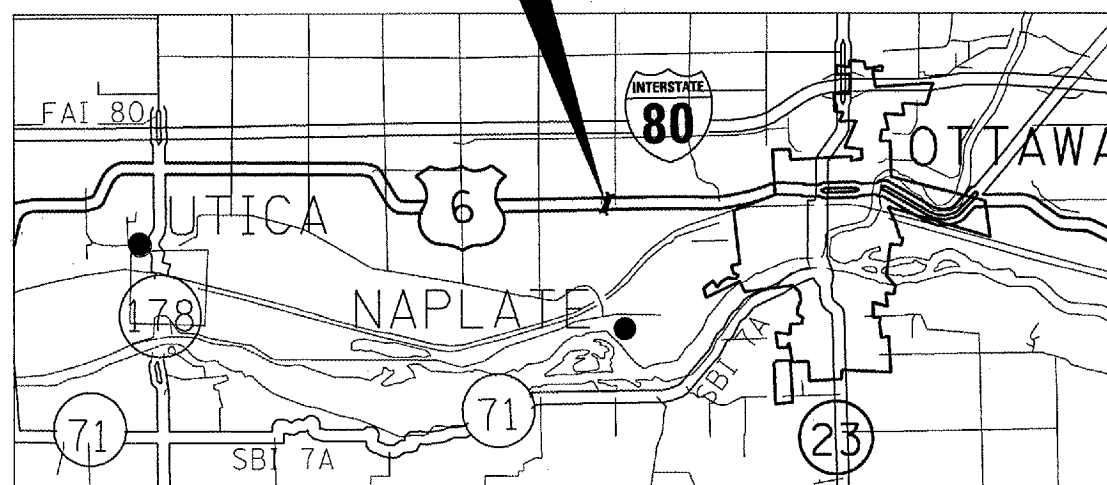
LASALLE COUNTY

C-93-025-06

BOX CULVERT REPAIR

PROJECT LOCATION

10' X 10' BOX CULVERT
FAP ROUTE 623 (US ROUTE 6)
+/-900 FEET WEST OF E1379th ROAD
(OAK BLUFF CT.)



LOCATION MAP

NOT TO SCALE

GROSS LENGTH OF PROJECT = 50 FEET 0.01 MI

NET LENGTH OF PROJECT = 50 FEET 0.01 MI

D-93-002-06



LOCATION OF SECTION INDICATED THUS: - - -

FUNCTIONAL CLASSIFICATION

RURAL: MINOR ARTERIAL

FAP ROUTE 623 (US ROUTE 6)

2003 ADT = 6400

P.V = 93.0% M.U. = 3.5% S.U. = 3.5%

STATE OF ILLINOIS
 DEPARTMENT OF TRANSPORTATION
 DIVISION OF HIGHWAYS

SUBMITTED 219 20 06

Gregory Mount
 DEPUTY DIRECTOR OF HIGHWAYS, REGION ENGINEER

March 24, 2006
Mike Hine
 ENGINEER OF DESIGN AND ENVIRONMENT

March 24, 2006
Milton R. Sees, P.E.
 DIRECTOR OF HIGHWAYS, CHIEF ENGINEER

PRINTED BY THE AUTHORITY
OF THE STATE OF ILLINOIS

F.A.P. RTE.	SECTION	COUNTY	TOTAL SHEETS	SHEET NO.
623	(30)1-1	LASALLE	12	2
FED. ROAD DIST. NO. ILLINOIS				

GENERAL NOTES

PLAN DIMENSIONS AND DETAILS RELATIVE TO THE EXISTING STRUCTURE HAVE BEEN TAKEN FROM EXISTING PLANS AND ARE SUBJECT TO NOMINAL CONSTRUCTION VARIATIONS. IT SHALL BE THE CONTRACTOR'S RESPONSIBILITY TO VERIFY SUCH DIMENSIONS AND DETAILS IN THE FIELD AND TO MAKE NECESSARY APPROVED ADJUSTMENTS PRIOR TO CONSTRUCTION OR ORDERING OF MATERIALS. SUCH VARIATIONS SHALL NOT BE CAUSE FOR ADDITIONAL COMPENSATION FOR A CHANGE IN THE SCOPE OF THE WORK, HOWEVER, THE CONTRACTOR WILL BE PAID FOR THE QUANTITY ACTUALLY FURNISHED AT THE UNIT BID FOR THE WORK.

FOR STABILIZATION, ALL TYPE III BARRICADES SHALL REQUIRE A MINIMUM OF FOUR SAND BAGS PER BARRICADE.

THE CONTRACTOR SHALL BE RESPONSIBLE FOR PROTECTING UTILITY PROPERTY FROM CONSTRUCTION OPERATIONS AS OUTLINED IN Article 107.31 OF THE STANDARD SPECIFICATIONS. THE "JULIE" NUMBER IS 1-800-892-0123. A MINIMUM OF FORTY-EIGHT (48) HOURS ADVANCE NOTICE IS REQUIRED.

THE COST OF ANY SAW CUTS MADE TO COMPLETE THE WORK AS DESCRIBED IN PLAN DETAILS, UNLESS OTHERWISE NOTED SHALL NOT BE PAID FOR SEPARATELY BUT SHALL BE INCLUDED WITH THE VARIOUS PAY REMOVAL PAY ITEMS INVOLVED.

WHERE SECTION OR SUBSECTION MONUMENTS ARE ENCOUNTERED, THE ENGINEER SHALL BE NOTIFIED BEFORE SUCH MONUMENTS ARE REMOVED. THE CONTRACTOR SHALL PROTECT AND CAREFULLY PRESERVE ALL MONUMENTS UNTIL AN AUTHORIZED SURVEYOR OR AGENT HAS WITNESSED OR OTHERWISE REFERENCED THEIR LOCATION. THE CONTRACTOR SHALL BE RESPONSIBLE FOR HAVING AN AUTHORIZED SURVEYOR REESTABLISH ANY SECTION OR SUBSECTION MONUMENTS DESTROYED BY HIS OPERATIONS.

ABANDONED UNDERGROUND UTILITIES THAT CONFLICT WITH CONSTRUCTION SHALL BE DISPOSED OF OUTSIDE THE LIMITS OF THE RIGHT OF WAY ACCORDING TO ARTICLE 202.03 OF THE STANDARD SPECIFICATIONS AND AS DIRECTED BY THE ENGINEER. THIS WORK WILL NOT BE PAID FOR SEPARATELY BUT SHALL BE INCLUDED IN THE COST OF EARTH EXCAVATION.

ANY REFERENCE TO A STANDARD IN THESE PLANS SHALL BE INTERPRETED TO MEAN THE EDITION AS INDICATED BY THE SUBNUMBER SHOWN IN THE LIST OF STANDARDS INCLUDED IN THESE PLANS.

THE FINISHED EARTHWORK SHALL HAVE A VEGETATION SUSTAINING SOIL COVERING THE TOP FOUR INCHES IN AREAS TO BE SEEDS OR SODDED. THE VEGETATION SUSTAINING SOIL REQUIRED WILL NOT BE PAID FOR SEPARATELY BUT SHALL BE INCLUDED IN THE COST OF EXCAVATION ITEMS INVOLVED.

ALL ELEVATIONS REFERRING TO U.S.G.S. MEAN SEA LEVEL DATUM.

ALL CONSTRUCTION JOINTS SHALL BE BONDED

REINFORCEMENT BARS SHALL CONFORM TO THE REQUIREMENTS OF AASHTO M 31 OR M 322 GRADE 60

	SUPERPAVE BINDER	SUPERPAVE SURFACE	SUPERPAVE SHOULDERS
PG GRADE	PG64-22	PG64-22	PG58-22
MAX % RAP ALLOWABLE	25%	15%	30%
DESIGN AIR VOIDS	4.0% @ N50	4.0% @ N50	2.0% @ N30
MIXTURE COMPOSITION	IL 19.0	IL 12.5 or IL 9.5	BAM
FRICTION AGGREGATE		MIXTURE D	
PLANT CONTROL LIMITS	CLASS I	CLASS I	NON-CLASS I
DENSITY CONTROL METHOD	CORES OR NUCLEAR METHOD	CORES OR NUCLEAR METHOD	.

- MATERIAL SHALL BE COMPACTED TO 93 - 97 PERCENT OF THE MAXIMUM THEORETICAL DENSITY, EXCEPT THAT THE BOTTOM LIFT SHALL BE COMPACTED TO A MINIMUM OF 92.0 PERCENT. THE MAXIMUM THEORETICAL DENSITY SHALL BE DETERMINED FROM THE MOVING AVERAGE AS SPECIFIED IN THE OC/OA SPECIFICATION.
- IF RAP OPTION IS SELECTED, THE ASPHALT CEMENT GRADE MAY NEED TO BE ADJUSTED. THIS WILL BE DETERMINED BY THE ENGINEER.

PREPARED BY: Rick Powell
DISTRICT STUDIES & PLANS ENGINEER

DATE: 2/7/06

EXAMINED BY: Herbert [Signature]
DISTRICT CONSTRUCTION ENGINEER

Kenneth [Signature]
DISTRICT MATERIALS ENGINEER

James A. [Signature]
DISTRICT OPERATIONS ENGINEER

REVISIONS		ILLINOIS DEPARTMENT OF TRANSPORTATION
NAME	DATE	
		GENERAL NOTES F.A.P. 623 (U.S. 6) SECTION (30)1-1 LASALLE COUNTY STA. 1556+25 DATE 12/20/2005 DRAWN BY RLW

Date: 11/07/2005
File: c:\projects\cmain06\cm324\details.dgn

F.A.P. RTE.	SECTION	COUNTY	TOTAL SHEETS	SHEET NO.
623	(30)I-1	LASALLE	12	3
FED. ROAD DIST. NO.		ILLINOIS		

SUMMARY OF QUANTITIES

CONSTRUCTION CODE TYPE: Y007

CODE NO.	ITEM	UNIT	RURAL 100% STATE TOTAL QUANTITY
20200410	EARTH EXCAVATION (SPECIAL)	CU YD	227
20400800	FURNISHED EXCAVATION	CU YD	227
31100100	SUB-BASE GRANULAR MATERIAL, TYPE A	TON	53
40600100	BITUMINOUS MATERIALS (PRIME COAT)	GALLON	7
42001200	PAVEMENT FABRIC	SQ YD	67
44000013	BITUMINOUS SURFACE REMOVAL 5"	SQ YD	67
44000100	PAVEMENT REMOVAL	SQ YD	67
44000920	BITUMINOUS CONCRETE SHOULDER REMOVAL	SQ YD	17
44100100	PAVEMENT REPLACEMENT	SQ YD	67
48101600	AGGREGATE SHOULDERS, TYPE B 8"	SQ YD	39
48202600	BITUMINOUS SHOULDERS SUPERPAVE 8"	SQ YD	17
50102400	CONCRETE REMOVAL	CU YD	5.9
50300225	CONCRETE STRUCTURES	CU YD	5.9
50800105	REINFORCEMENT BARS	POUND	1100
50800205	REINFORCEMENT BARS, EPOXY COATED	POUND	284
58000110	MEMBRANE WATERPROOFING (SPECIAL)	SQ FT	432
63300205	REMOVAL AND REINSTALLATION OF EXISTING STEEL PLATE BEAM GUARD RAIL, TYPE A	FOOT	50
63300230	REMOVAL AND REINSTALLATION OF EXISTING STEEL PLATE BEAM GUARD RAIL, ATTACHED TO STRUCTURES	FOOT	20
67100100	MOBILIZATION	L SUM	1
70100450	TRAFFIC CONTROL AND PROTECTION, STANDARD 701201	L SUM	1
70101205	TRAFFIC CONTROL AND PROTECTION, STANDARD 701321 (SPECIAL)	EACH	1
70106500	TEMPORARY BRIDGE TRAFFIC SIGNALS	EACH	1
70301000	WORK ZONE PAVEMENT MARKING REMOVAL	SQ FT	482
70400100	TEMPORARY CONCRETE BARRIER	FOOT	290
* 78000200	THERMOPLASTIC PAVEMENT MARKING - LINE 4"	FOOT	1530
* 78000400	THERMOPLASTIC PAVEMENT MARKING - LINE 6"	FOOT	260
78300100	PAVEMENT MARKING REMOVAL	SQ FT	419
X2510630	HEAVY DUTY EROSION CONTROL BLANKET	SQ YD	22
X4066424	BITUMINOUS CONCRETE SURFACE COURSE, SUPERPAVE, MIX "D", N50	TON	6
X4066614	BITUMINOUS CONCRETE BINDER COURSE, SUPERPAVE, IL-19.0, N50	TON	13
Z0018905	DRILL AND GROUT BARS	EACH	20
† Z0030250	IMPACT ATTENUATORS, TEMPORARY (NON- REDIRECTIVE), TEST LEVEL 3	EACH	2

† SFTY 3N

REVISIONS	
NAME	DATE

ILLINOIS DEPARTMENT OF TRANSPORTATION
SUMMARY OF QUANTITIES
 F.A.P. 623 (U.S. 6) SECTION (30)I-1
 LASALLE COUNTY
 STA. 1556+25

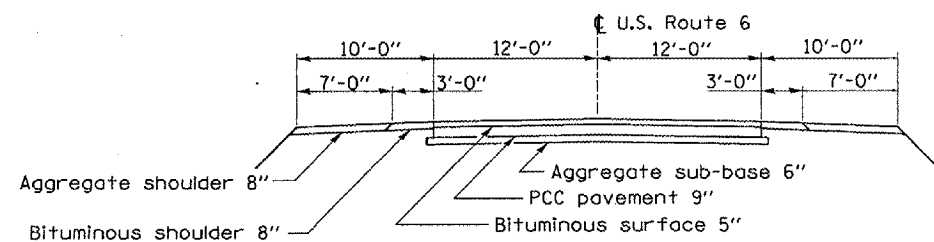
DATE 12/20/2005

DRAWN BY RLW

Date: 11/07/2005
File: c:\projects\cmain06\cm324\detalls.dgn

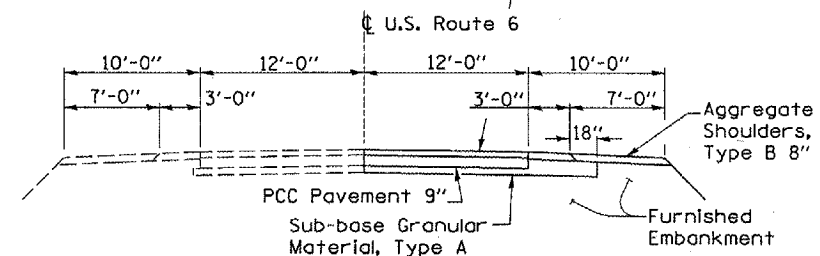
F.A.P. RTE.	SECTION	COUNTY	TOTAL SHEETS	SHEET NO.
623	(30)I-1	LASALLE	12	4
FED. ROAD DIST. NO. ILLINOIS				

BM #1 NORTHWEST CORNER HEADWALL ELEV. 100.00

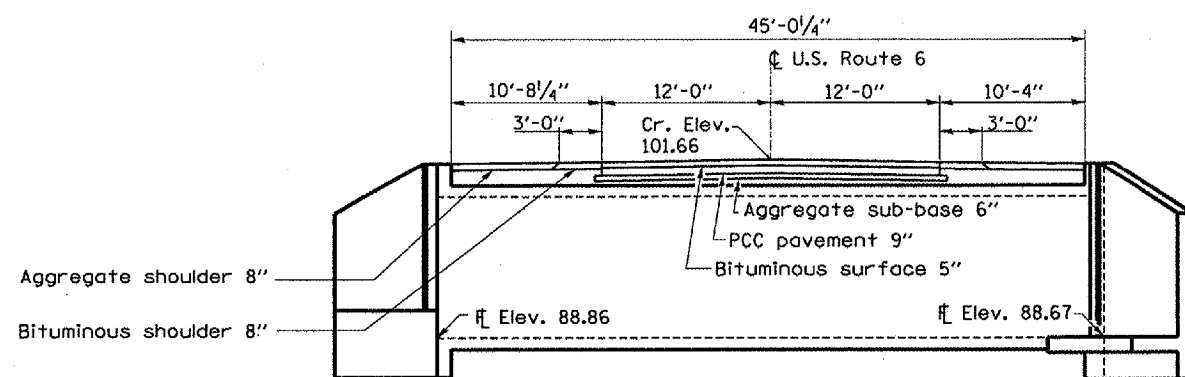


EXISTING ROADWAY SECTION
LOOKING WEST

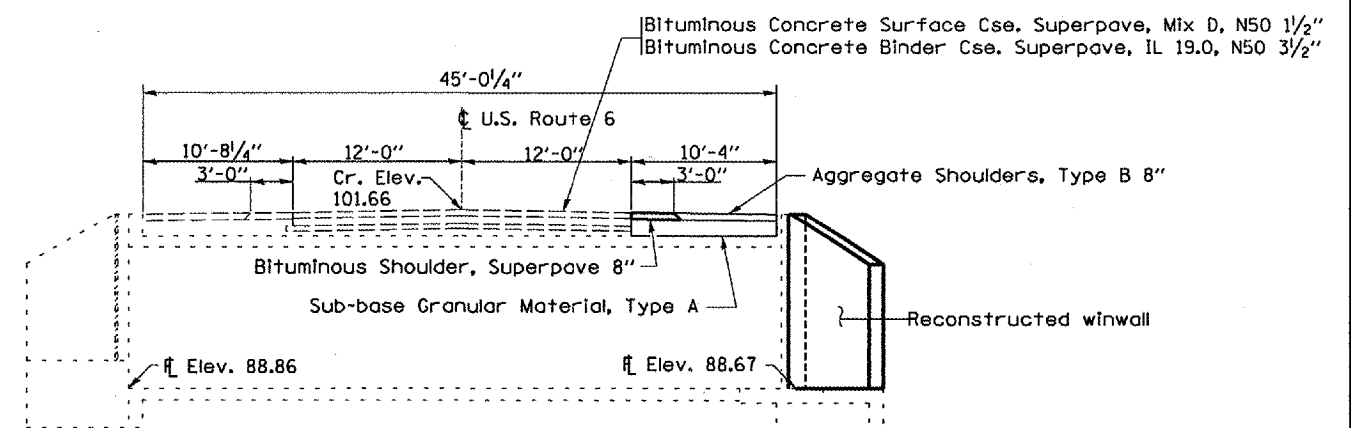
Bituminous Concrete Surface Cse. Superpave, Mix D, N50 1 1/2"
Bituminous Concrete Binder Cse. Superpave, IL 19.0, N50 3 1/2"



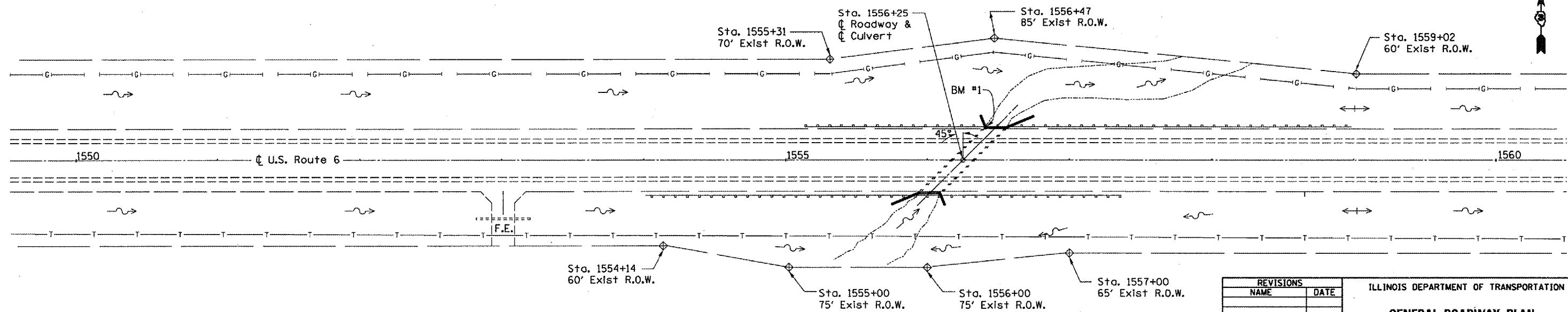
PROPOSED ROADWAY SECTION
LOOKING WEST



EXISTING ROADWAY SECTION
AT BOX CULVERT
LOOKING WEST



PROPOSED ROADWAY SECTION
AT BOX CULVERT
LOOKING WEST



PLAN

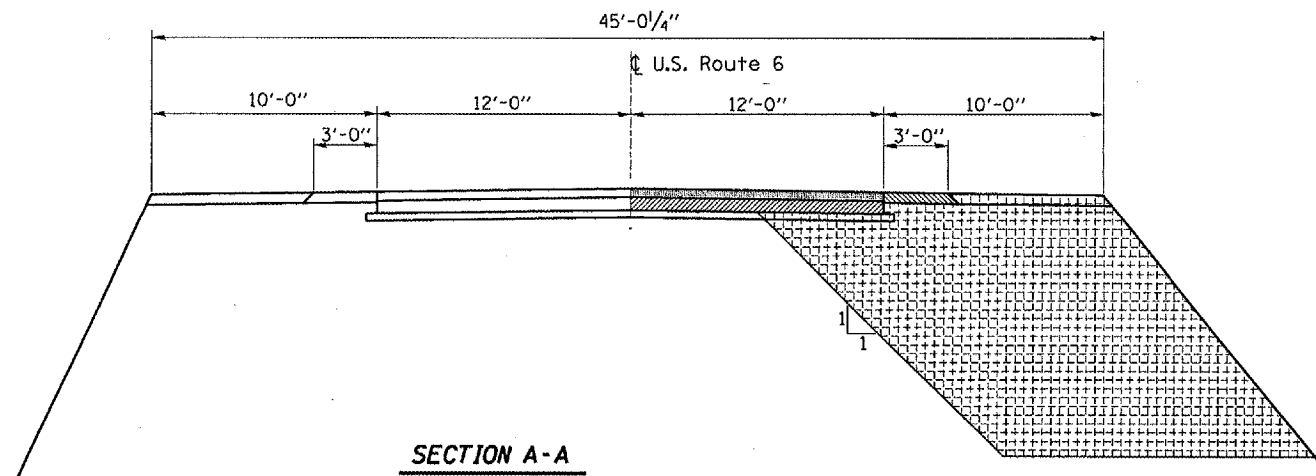
REVISIONS	
NAME	DATE

ILLINOIS DEPARTMENT OF TRANSPORTATION
GENERAL ROADWAY PLAN
F.A.P. 623 (U.S. 6) SECTION (30)I-1
LASALLE COUNTY
STA. 1556 + 25
DATE 12/20/2005 DRAWN BY RLW

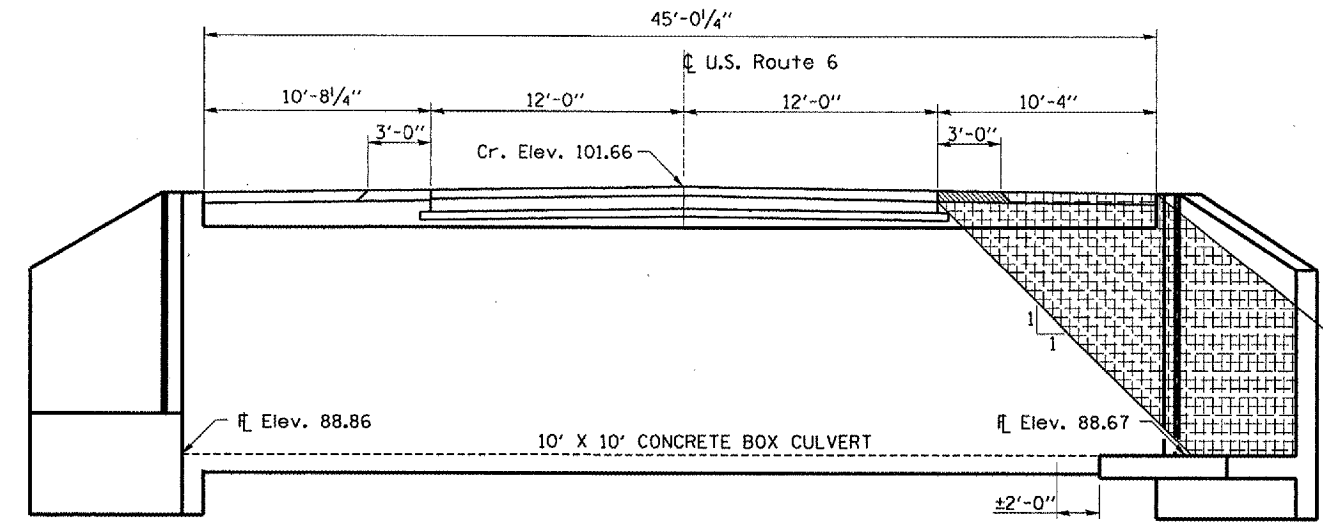
Date: 11/07/2005
File: c:\projects\main06\cm324\details.dgn

F.A.P. RTE.	SECTION	COUNTY	TOTAL SHEETS	SHEET NO.
623	(30)1-1	LASALLE	12	5
FED. ROAD DIST. NO. ILLINOIS				

BM #1 NORTHWEST CORNER HEADWALL ELEV. 100.00



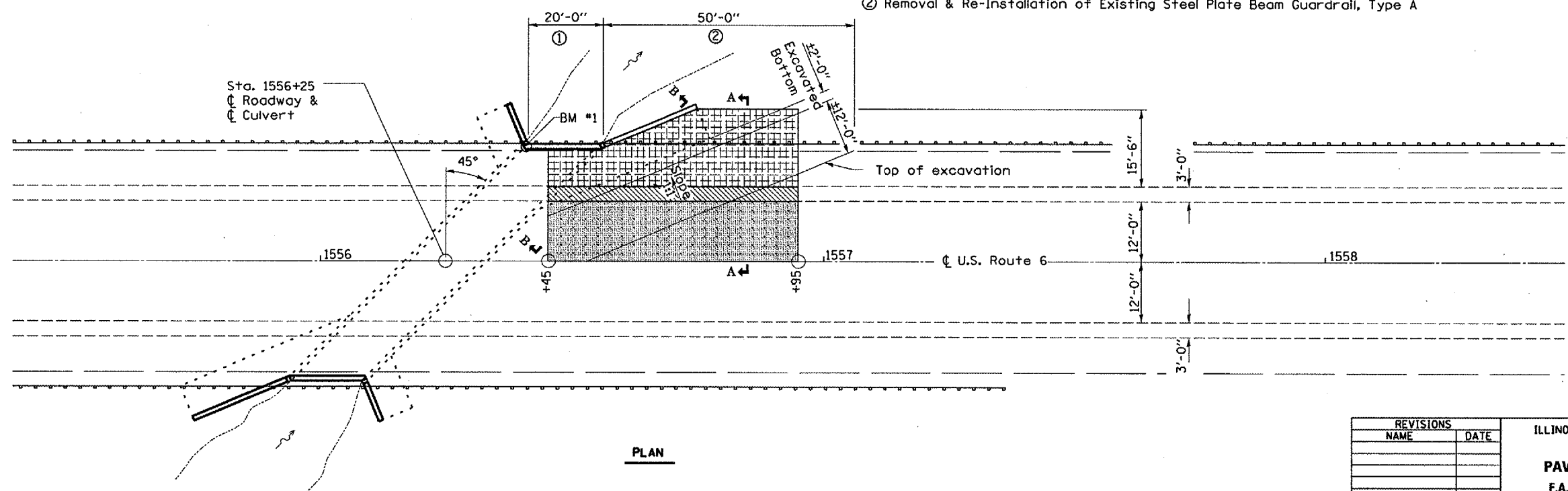
SECTION A-A



SECTION B-B

- BITUMINUS SURFACE REMOVAL & REPLACEMENT
- BITUMINUS SHOULDER REMOVAL & REPLACEMENT
- EARTH EXCAVATION & FURNISHED EXCAVATION
- CLASS B PATCH, TYPE IV 9"

- ① Removal & Re-Installation of Existing Steel Plate Beam Guardrail, Attached to Structure
- ② Removal & Re-Installation of Existing Steel Plate Beam Guardrail, Type A



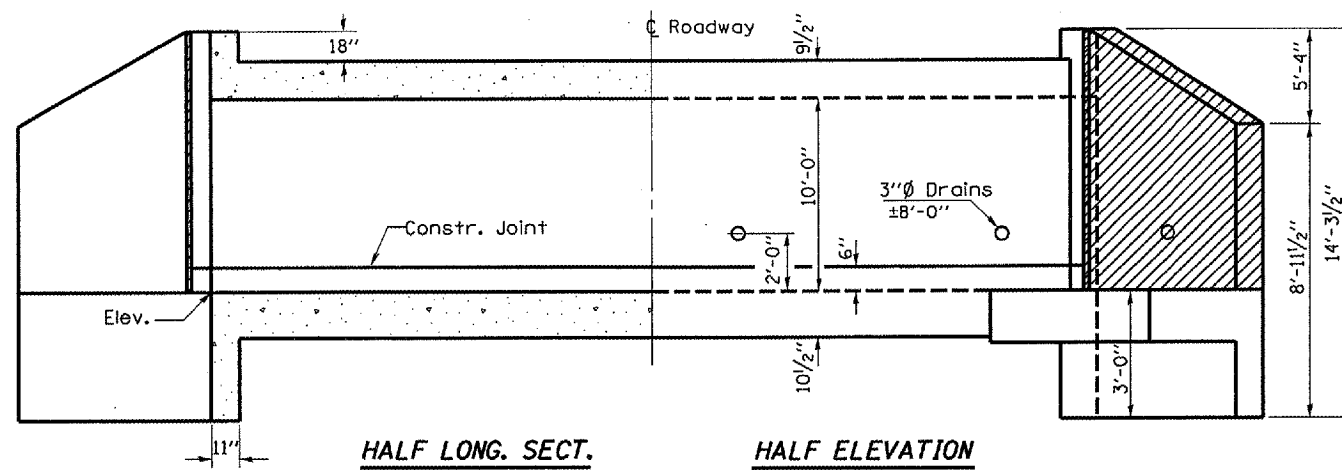
PLAN

REVISIONS	
NAME	DATE

ILLINOIS DEPARTMENT OF TRANSPORTATION
PAVEMENT REMOVAL DETAILS
 F.A.P. 623 (U.S. 6) SECTION (30)1-1
 LASALLE COUNTY
 STA. 1556 + 25
 DATE 12/20/2005 DRAWN BY RLW

Date: 11/07/2005
 File: c:\projects\cm06\cm324\details.dgn

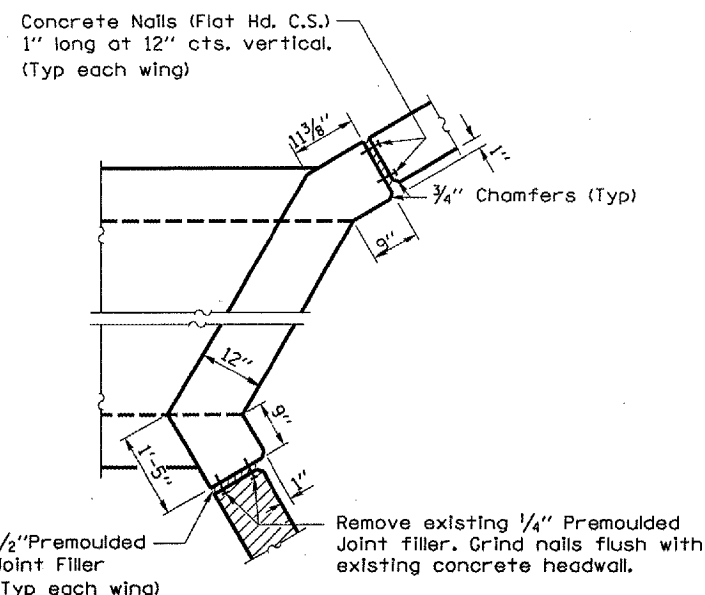
F.A.P. RTE.	SECTION	COUNTY	TOTAL SHEETS	SHEET NO.
623	(30)1-1	LASALLE	12	6
FED. ROAD DIST. NO. ILLINOIS				



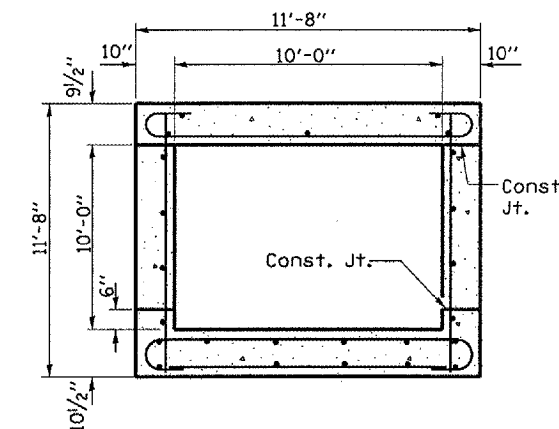
HALF LONG. SECT. HALF ELEVATION
LOOKING WEST

Dimensions at Rt. L's to ϕ Roadway

CONCRETE REMOVAL



CORNER DETAIL



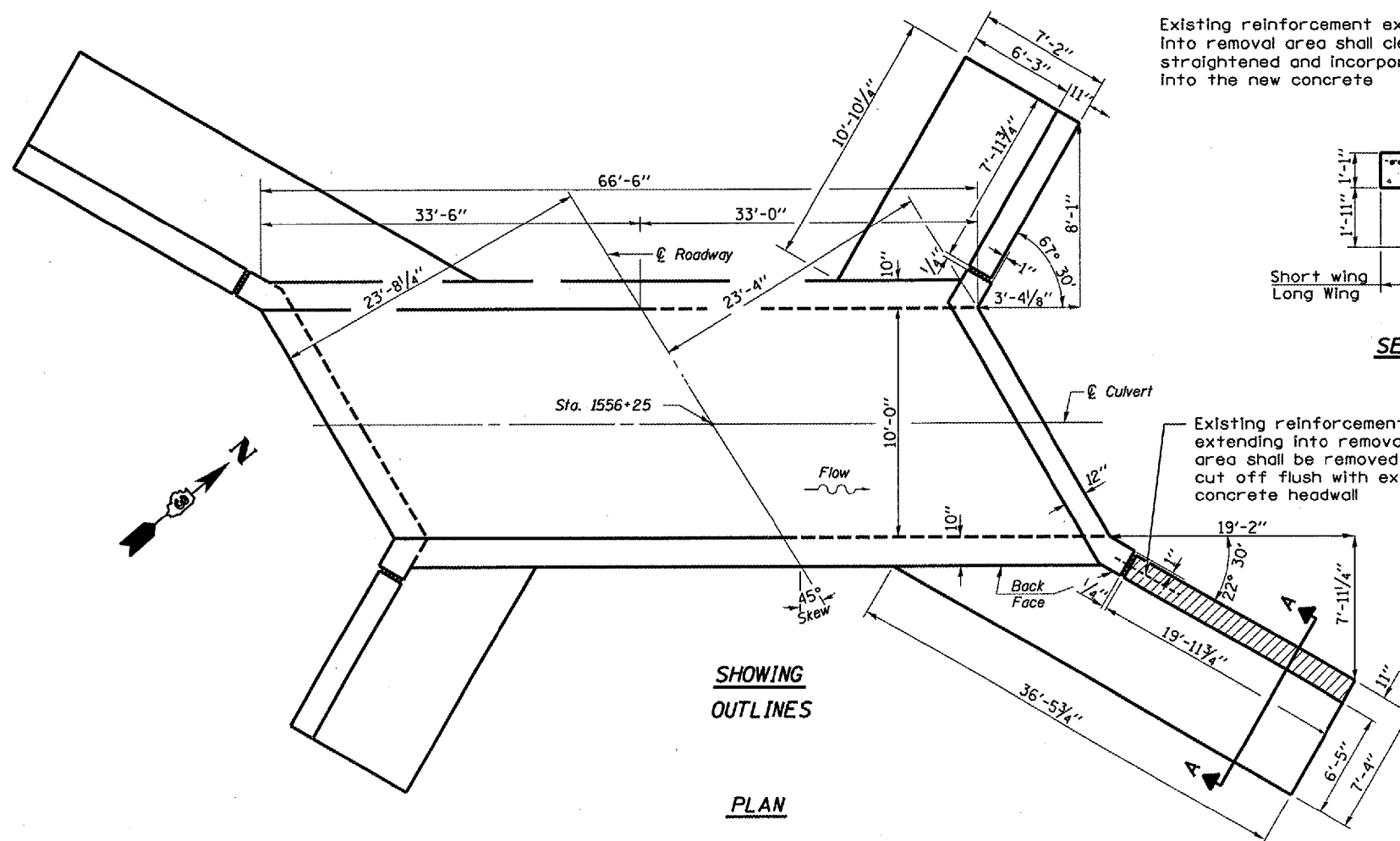
SECTION THRU BARREL

General Notes

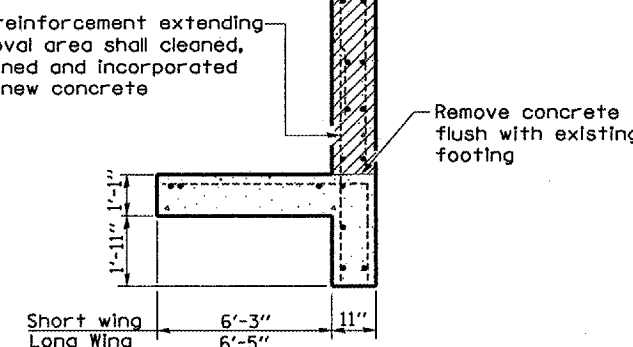
PLAN DIMENSIONS AND DETAILS RELATIVE TO THE EXISTING STRUCTURE HAVE BEEN TAKEN FROM EXISTING PLANS AND ARE SUBJECT TO NOMINAL CONSTRUCTION VARIATIONS. IT SHALL BE THE CONTRACTOR'S RESPONSIBILITY TO VERIFY SUCH DIMENSIONS AND DETAILS IN THE FIELD AND TO MAKE NECESSARY APPROVED ADJUSTMENTS PRIOR TO CONSTRUCTION OR ORDERING OF MATERIALS. SUCH VARIATIONS SHALL NOT BE CAUSE FOR ADDITIONAL COMPENSATION FOR A CHANGE IN THE SCOPE OF THE WORK, HOWEVER, THE CONTRACTOR WILL BE PAID FOR THE QUANTITY ACTUALLY FURNISHED AT THE UNIT BID FOR THE WORK.

THE CONTRACTOR SHALL EXERCISE CARE DURING CONCRETE REMOVAL OPERATIONS SO THAT THE EXISTING CONCRETE FOOTING IS NOT DAMAGED. IF THE EXISTING FOOTING IS DAMAGED DUE TO THE CONTRACTOR'S OPERATIONS, THE FOOTING SHALL BE REPAIRED TO THE SATISFACTION OF THE ENGINEER, AT THE CONTRACTOR'S EXPENSE.

IF THE EXISTING FOOTING IS DAMAGED OR DETERIORATED, DUE IN NO PART OF THE CONTRACTOR'S OPERATIONS, THE FOOTING SHALL BE REPAIRED TO THE SATISFACTION OF THE ENGINEER AND SHALL BE PAID FOR ACCORDING TO ARTICLE 109.04 OF THE STANDARD SPECIFICATIONS.



SHOWING OUTLINES
PLAN



SECTION A-A

EXISTING DESIGN STRESSES

$f_y = 20,000 \text{ psi}$
 $f'_c = 1,200 \text{ psi}$

LOADING HS 20

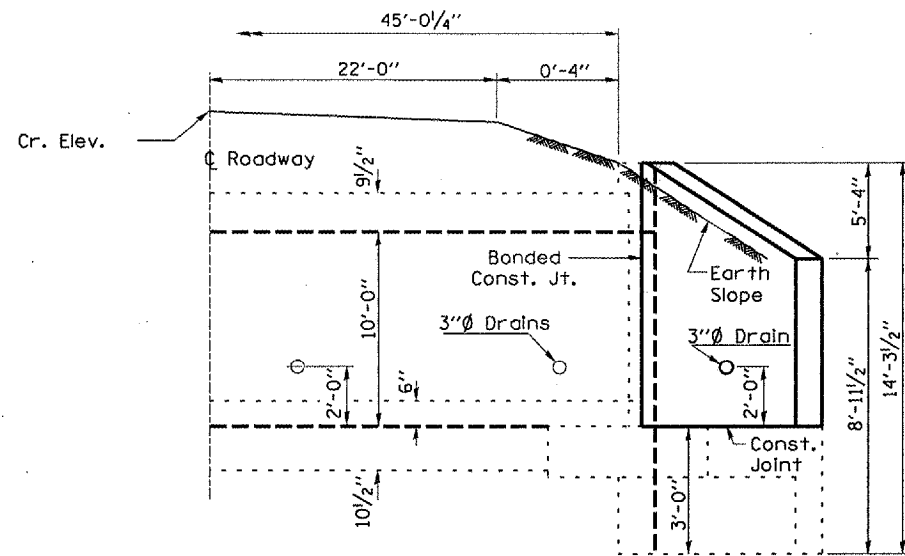
BILL OF MATERIAL

CONCRETE REMOVAL	CU. YD. 5.9
-------------------------	--------------------

REVISIONS		ILLINOIS DEPARTMENT OF TRANSPORTATION
NAME	DATE	
		EXISTING CULVERT DETAILS F.A.P. 623 (U.S. 6) SECTION (30)1-1 LASALLE COUNTY STA. 1556+25 DATE 12/20/2005 DRAWN BY RLW

Date: 11/07/2005
File: cr/projects/cmain06/cm324/details.dgn

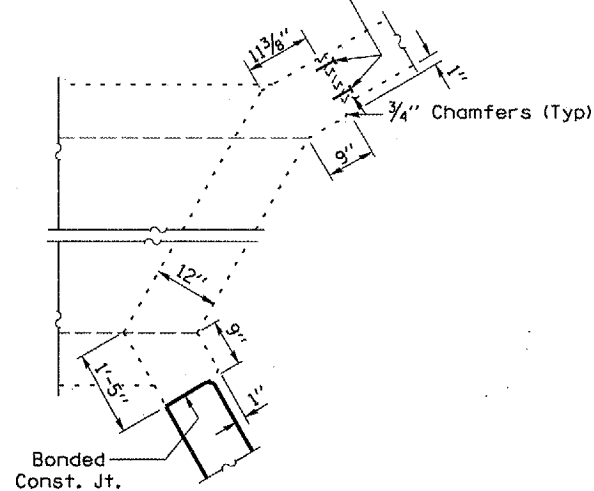
F.A.P. RTE.	SECTION	COUNTY	TOTAL SHEETS	SHEET NO.
623	(30)I-1	LASALLE	12	7
FED. ROAD DIST. NO.		ILLINOIS		



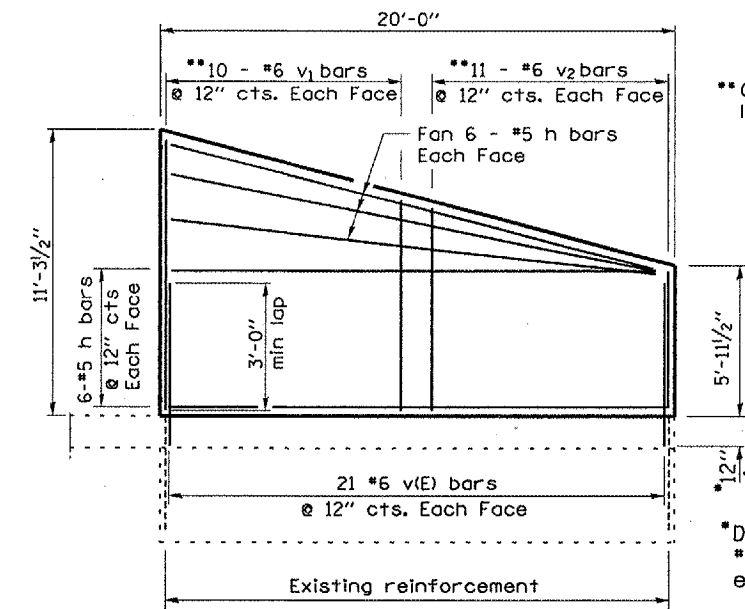
HALF ELEVATION

Dimensions at Rt. L's to ϕ Roadway

Concrete Nails (Flat Hd. C.S.)
1" long at 12" cts. vertical.
(Typ each wing)



CORNER DETAIL



ELEVATION

**Order v₁ and v₂ bars full length and cut to fit in field

*Drill and epoxy grout #6 v(E) bars into existing footing

EXISTING DESIGN STRESSES

$f_y = 60,000 \text{ psi}$
 $f'_c = 3,500 \text{ psi}$

LOADING HS 20

NOTES:

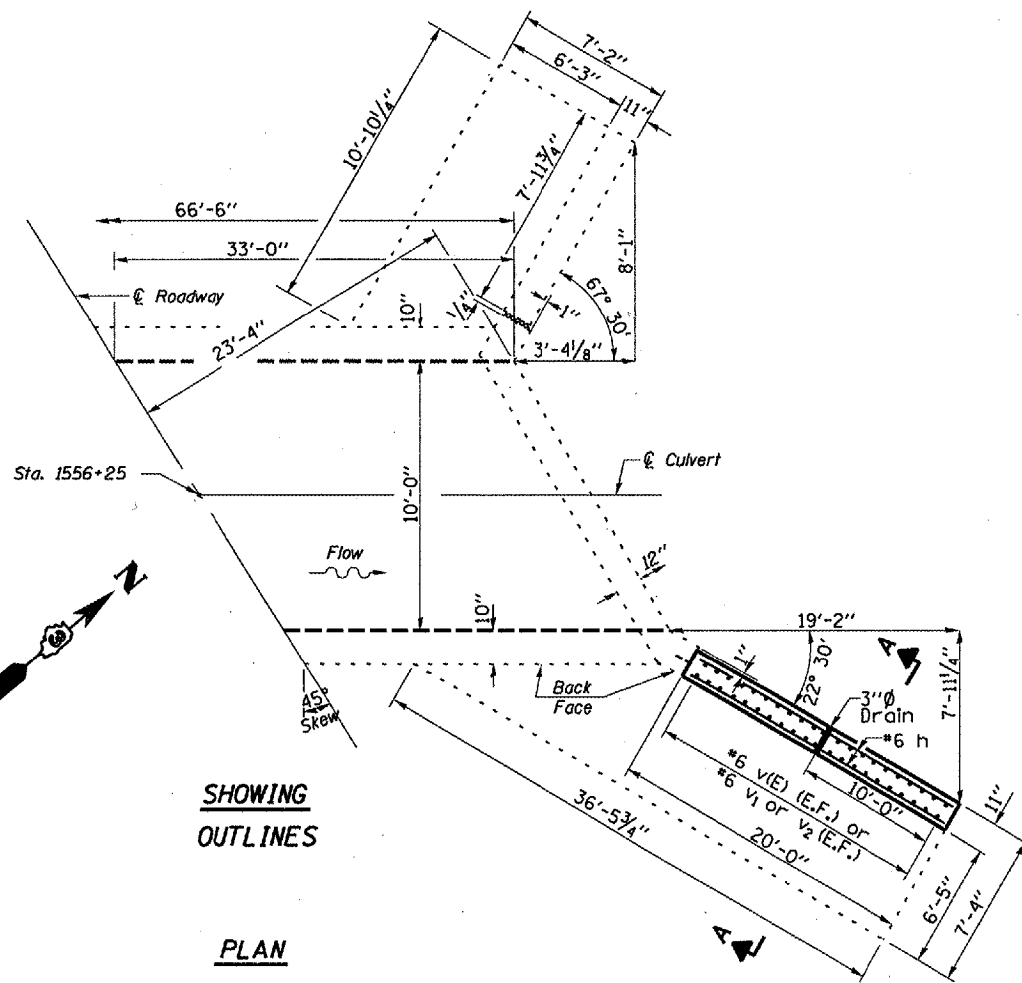
Plan dimensions and details relative to existing structure have been taken from existing plans and are subject to nominal construction variations. It shall be the Contractor's responsibility to verify such dimensions and details in the field and make necessary approved adjustments prior to construction or ordering of materials. Such variations shall not be cause for additional compensation for a change in the scope of the work, however, the Contractor will be paid for the quantity actually furnished at the unit price bid for the work.

Reinforcement Bars shall conform to the requirements of AASHTO M 31 or M 322 Grade 60.

Reinforcement bars designated (E) shall be epoxy coated.

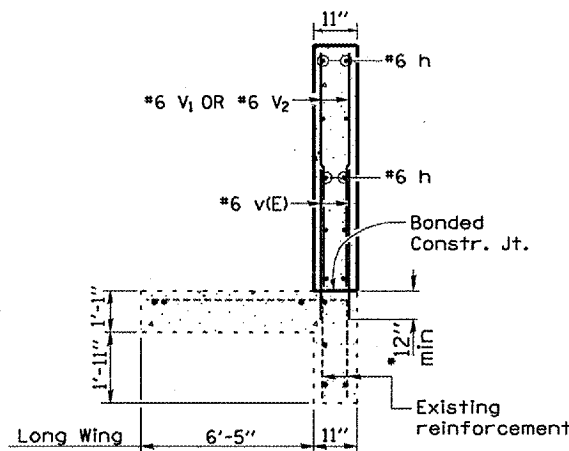
All construction joints shall be bonded.

The top of footing and the back vertical face of the wing wall shall be waterproofed according to the Special Provision for "Waterproofing Membrane Special", plan details and as directed by the Engineer.



SHOWING OUTLINES

PLAN



SECTION A-A

BILL OF MATERIAL

Bar	No.	Size	Length	Shape
h	24	#5	19'-9"	—
v(E)	42	#6	4'-6"	—
v ₁	20	#6	11'-0"	—
v ₂	22	#6	8'-4"	—
Concrete Structures		Cu. Yd.	5.9	
Reinforcement Bars, Epoxy Coated		Pound	284	
Reinforcement Bars,		Pound	1100	

Reinforcement designated (E) shall be Epoxy Coated

REVISIONS	
NAME	DATE

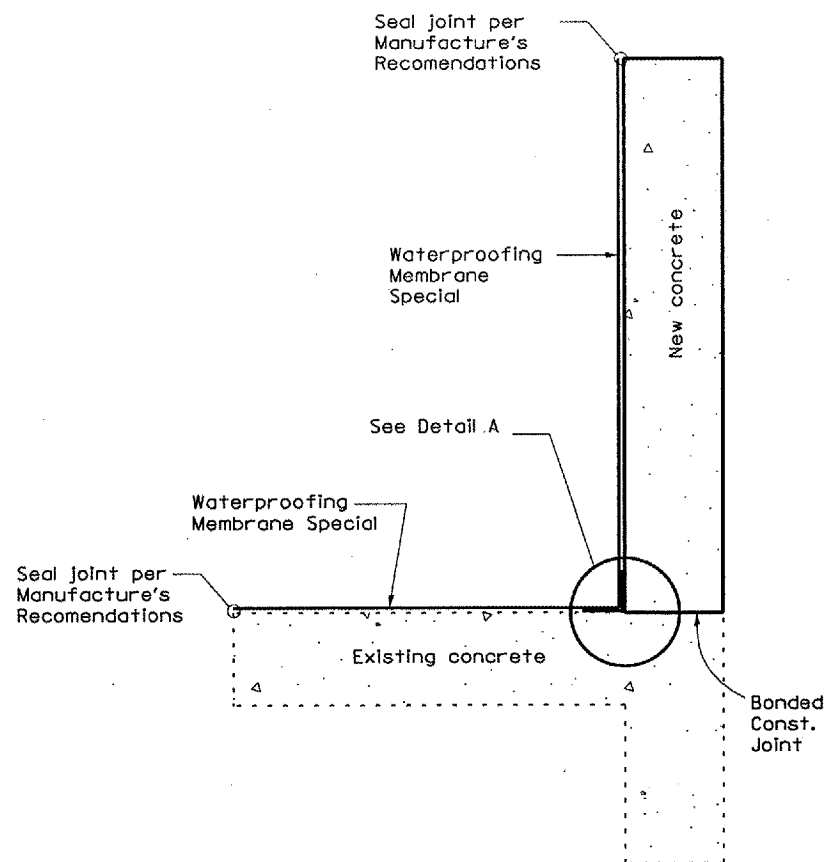
ILLINOIS DEPARTMENT OF TRANSPORTATION

PROPOSED CULVERT DETAILS
F.A.P. 623 (U.S. 6) SECTION (30)I-1
LASALLE COUNTY
STA. 1556+25

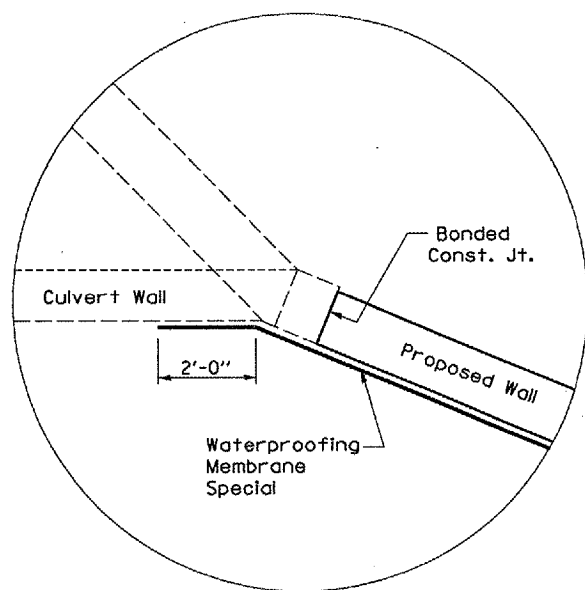
DATE 12/20/2005

DRAWN BY RLW

F.A.P. RTE.	SECTION	COUNTY	TOTAL SHEETS	SHEET NO.
623	(30)1-1	LASALLE	12	8
FED. ROAD DIST. NO. - ILLINOIS				

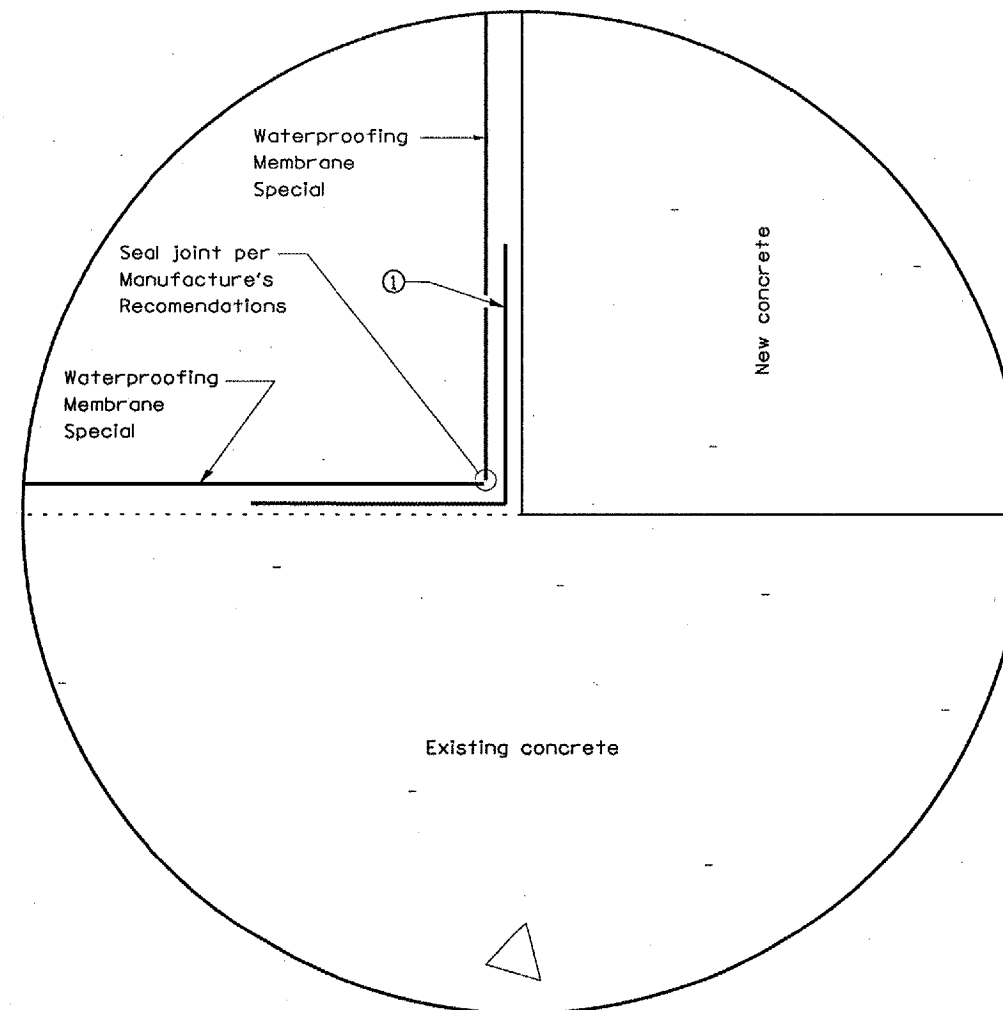


DETAIL A



CORNER DETAIL

① A two foot (2') min width strip of waterproofing membrane shall be placed centered over the construction joint prior to applying a full protective layer to the concrete surfaces.



DETAIL A

NOTES:

The exposed surfaces of the existing top of footing and the back side of the wingwall shall be protected by the waterproofing membrane as per the manufacturer's recommendations.

A manufacturer's representative shall be on site during the installation of the waterproofing membrane to provide technical support when required.

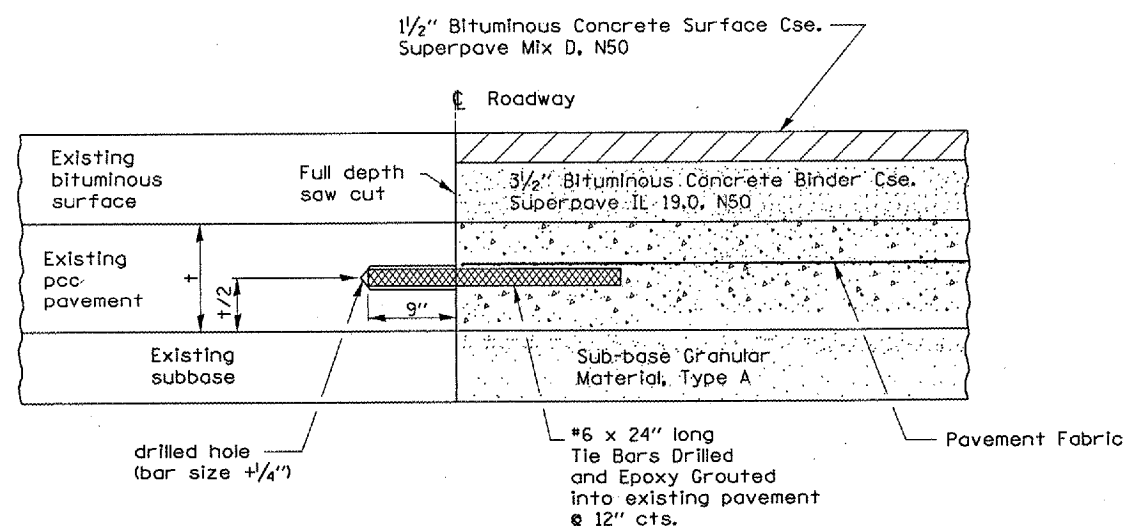
The Contractor shall install the waterproofing membrane according the Special Provision for Waterproofing Membrane Special provided elsewhere in the plans, according to this detail and as directed by the Engineer.

REVISIONS	
NAME	DATE

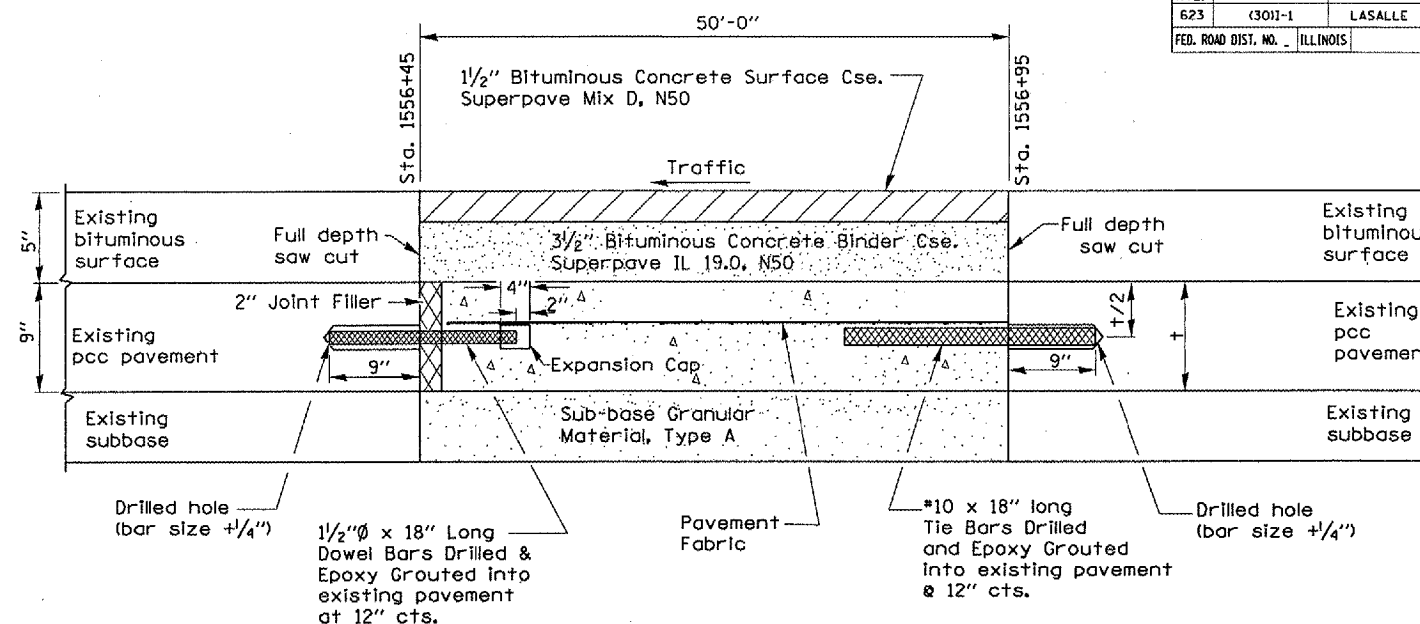
ILLINOIS DEPARTMENT OF TRANSPORTATION
MEMBRANE WATERPROOFING
(SPECIAL) DETAILS
 F.A.P. 623 (U.S. 6) SECTION (30)1-1
 LASALLE COUNTY
 STA. 1556 + 25
 DATE 12/20/2005 DRAWN BY RLW

Date: 11/07/2005
 File: cr/projects/cmain06/cm324/details.dgn

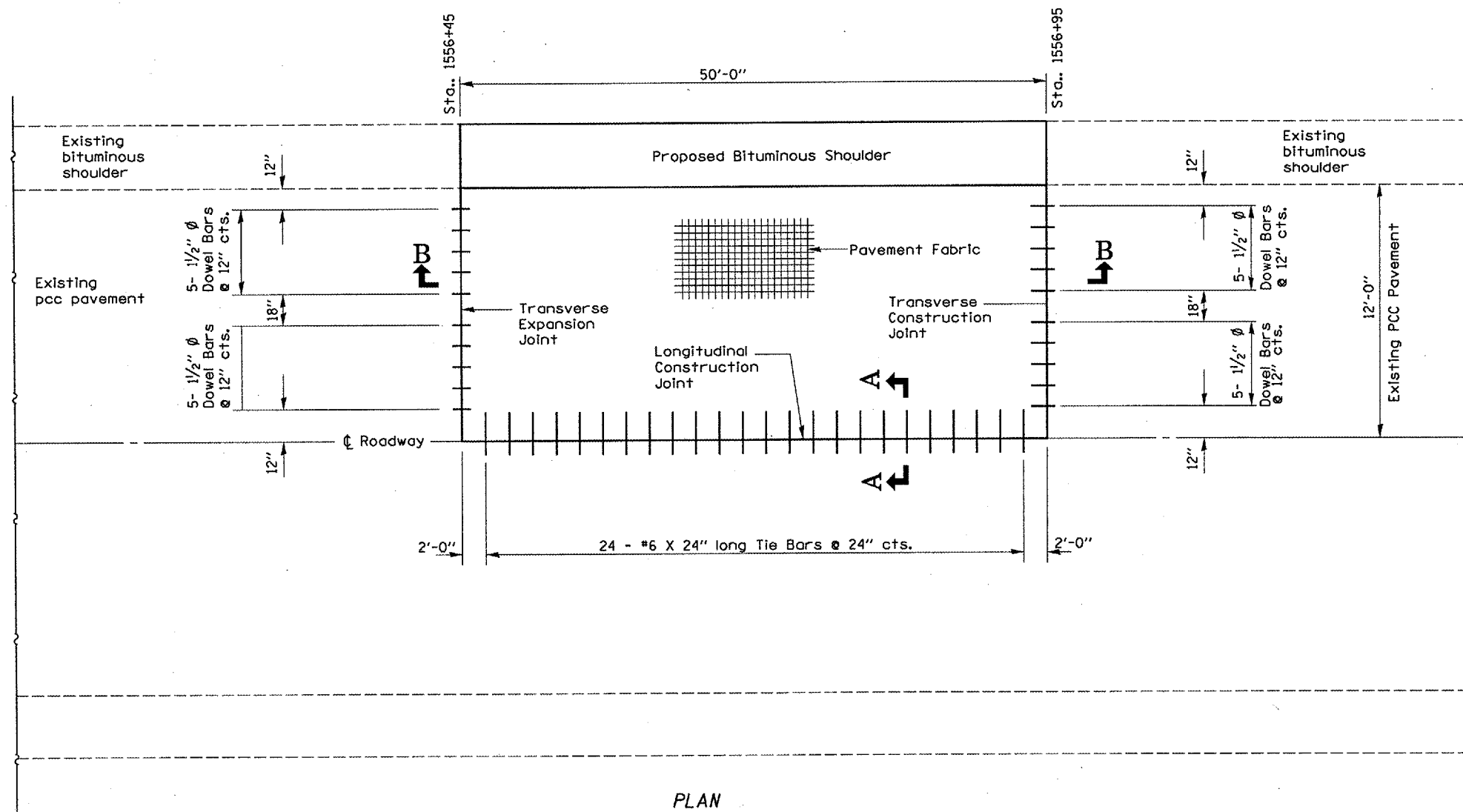
F.A.P. RTE.	SECTION	COUNTY	TOTAL SHEETS	SHEET NO.
623	(30)1-1	LASALLE	12	9
FED. ROAD DIST. NO. ILLINOIS				



SECTION A-A



SECTION B-B



PLAN

Date: 11/07/2005
File: c:\projects\cmain06\cm324\details.dgn

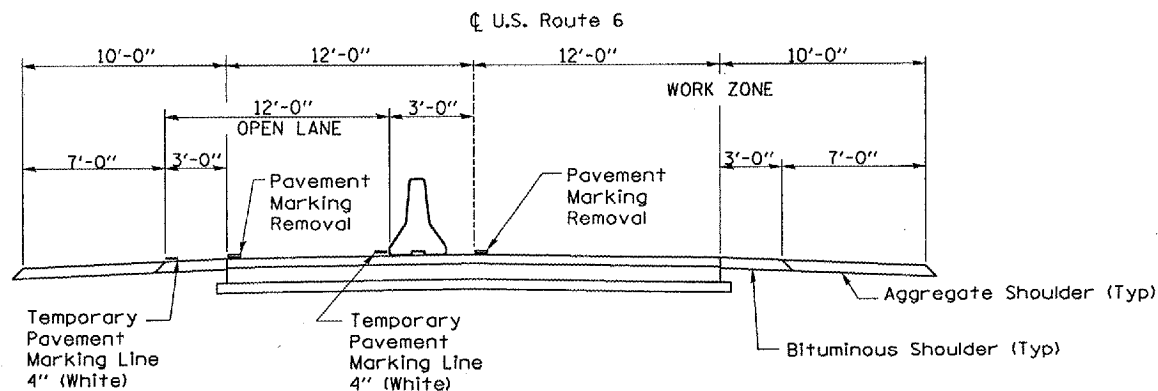
REVISIONS	
NAME	DATE

ILLINOIS DEPARTMENT OF TRANSPORTATION
PAVEMENT REPLACEMENT DETAILS
F.A.P. 623 (U.S. 6) SECTION (30)1-1
LASALLE COUNTY
STA. 1556+25

DATE 12/20/2005

DRAWN BY RLW

F.A.P. RTE.	SECTION	COUNTY	TOTAL SHEETS	SHEET NO.
623	(30)I-1	LASALLE	12	10
FED. ROAD DIST. NO. - ILLINOIS				



TYPICAL ROADWAY SECTION
LOOKING WEST

- SYMBOLS**
- Work area
 - Sign
 - Type III barricade
 - Drum with steady burning light
 - Traffic signal
 - Double vertical panel
 - Type C Bidirectional reflector
 - Temporary concrete barrier
 - Impact attenuator
 - Steady burning lights and double vertical panels
 - Microwave Detector

GENERAL NOTES

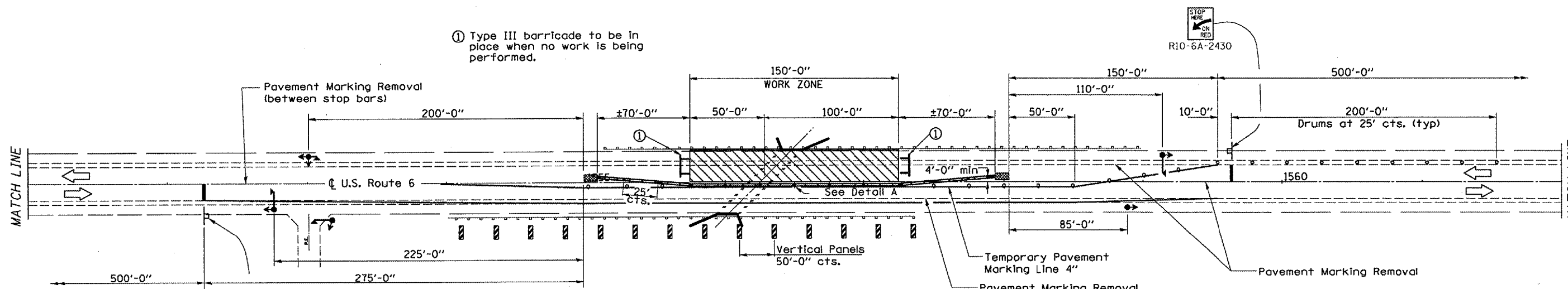
This Standard is used where, at any time any vehicle, equipment, workers, or their activities will encroach on one lane of a bridge. Traffic signals and a positive barrier are required.

When traffic signals are not in operation, flaggers shall be used and traffic control devices shall conform to Standard 701201 or 701206.

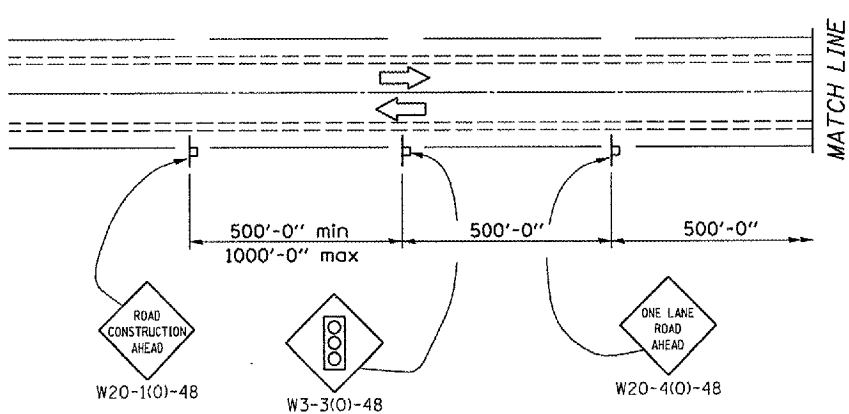
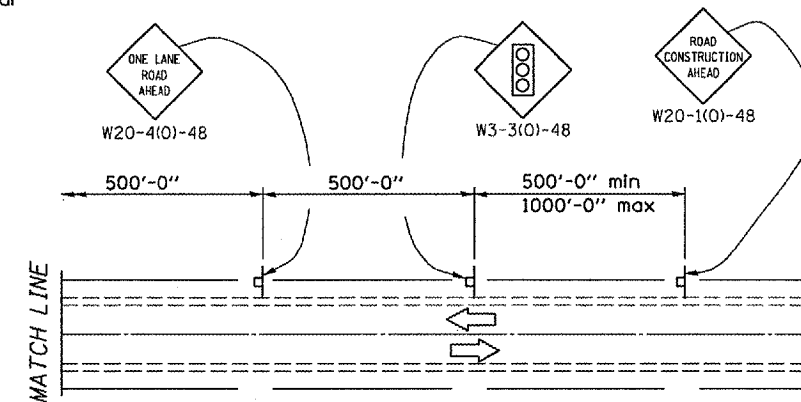
Temporary concrete barrier shall be according to Standard 704001.

Bi-directional lights shall be used at night along the centerline where the work area is separated from the travel lane using barricades or drums. Monodirectional lights shall be used at night on all other barricades or drums.

Existing or temporary pavement marking shall be on both sides of the open lane from stop bar to stop bar.



PLAN



TEMPORARY CONCRETE BARRIER	
POSTED SPEED	TAPER RATIO
40 mph AND ABOVE	12:1
BELOW 40 mph	8:1

REVISIONS	
NAME	DATE

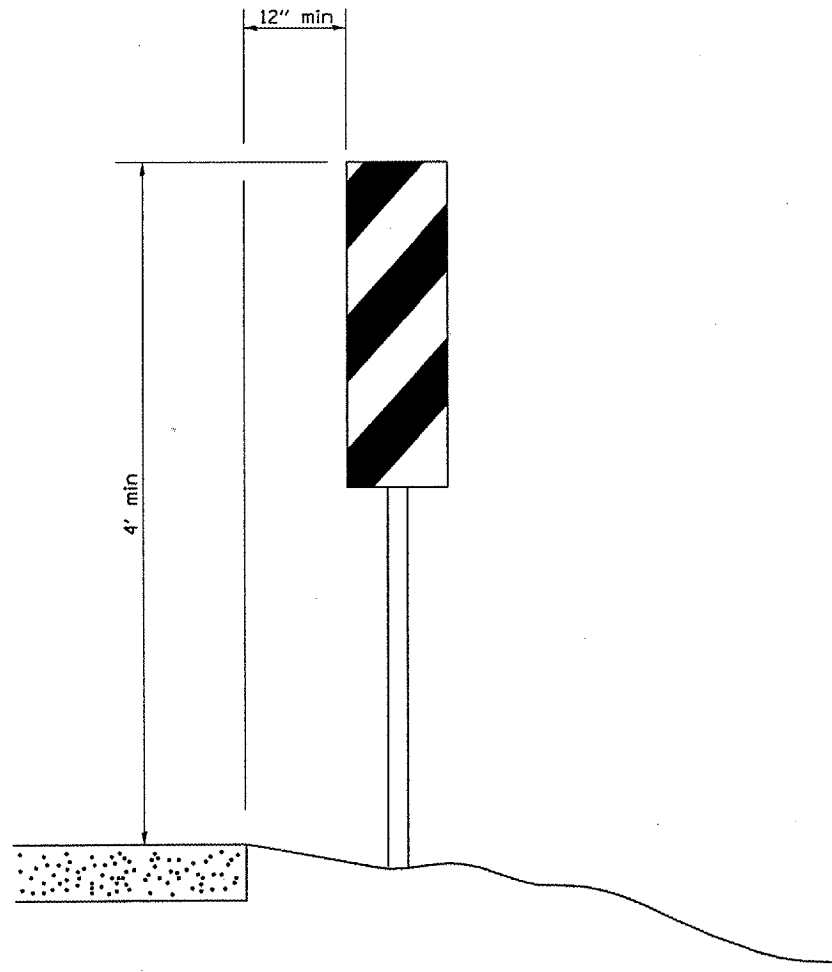
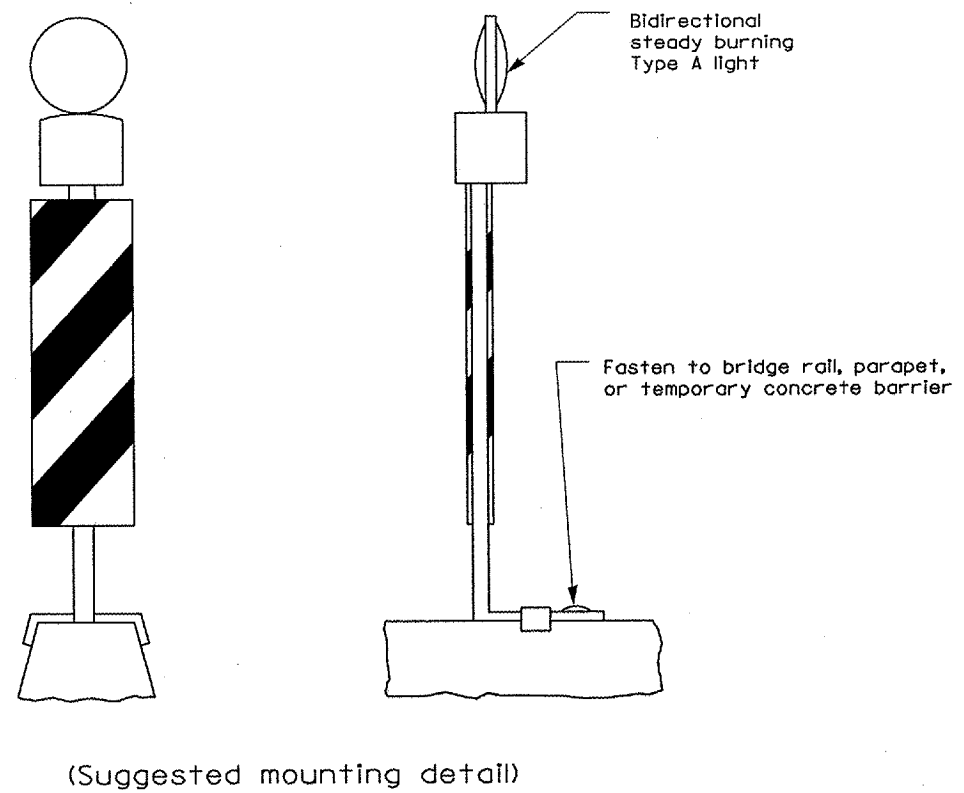
ILLINOIS DEPARTMENT OF TRANSPORTATION
TRAFFIC CONTROL AND PROTECTION,
STANDARD 701321 (SPECIAL)
F.A.P. 623 (U.S. 6) SECTION (30)I-1
LASALLE COUNTY
STA. 1556+25

DATE 12/20/2005

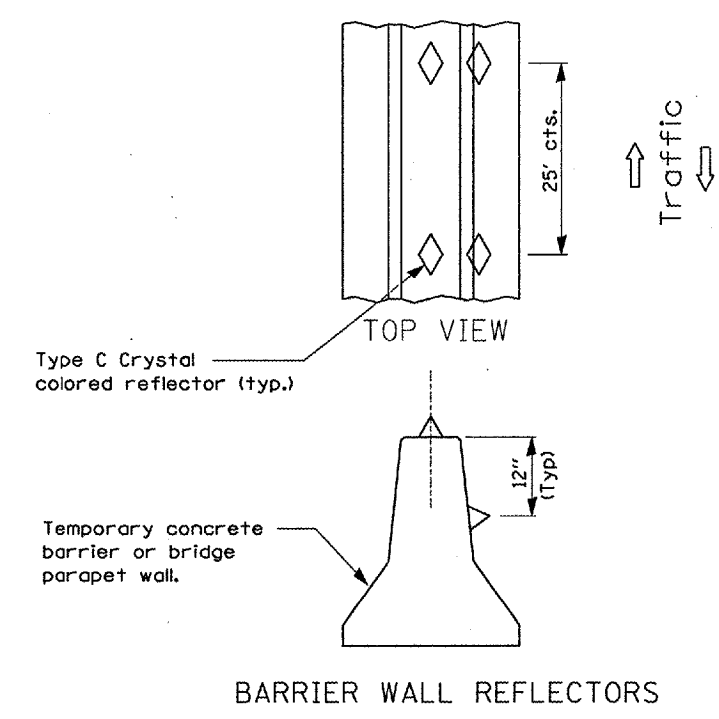
DRAWN BY RLW

Date: 11/07/2005
File: c:\projects\smatn06\cm324\details.dgn

F.A.P. RTE.	SECTION	COUNTY	TOTAL SHEETS	SHEET NO.
623	(30)I-1	LASALLE	12	11
FED. ROAD DIST. NO. - ILLINOIS				



VERTICAL PANELS



DETAIL A

Date: 11/07/2005
File: c:\projects\cmah06\cm324\details.dgn

REVISIONS	
NAME	DATE

ILLINOIS DEPARTMENT OF TRANSPORTATION

TYPICAL PAVEMENT MARKING

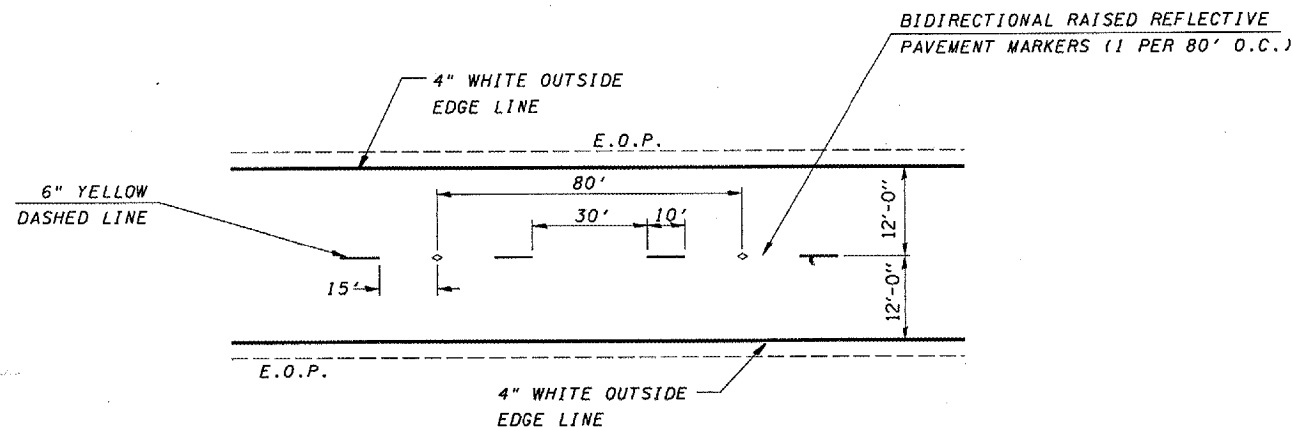
F.A.P. 623 (U.S. 6) SECTION (30)I-1

LASALLE COUNTY

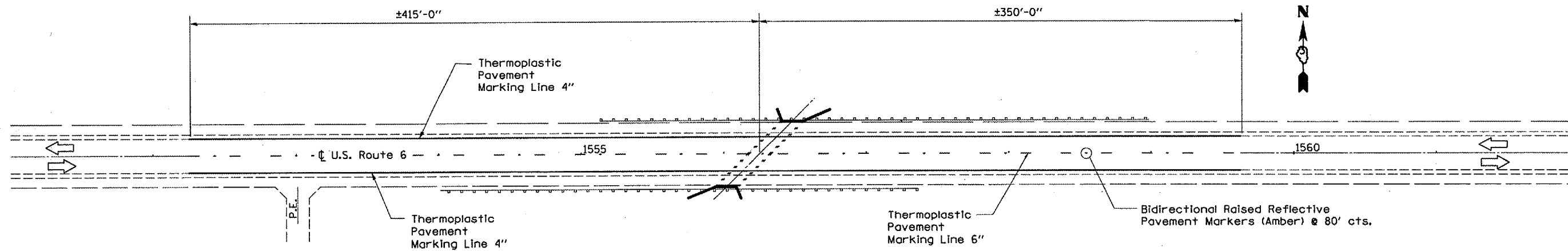
STA. 1556 + 25

DATE 12/20/2005 DRAWN BY RLW

F.A.P. RTE.	SECTION	COUNTY	TOTAL SHEETS	SHEET NO.
623	(30)1-1	LASALLE	12	12
FED. ROAD DIST. NO.		ILLINOIS		



TYPICAL PAVEMENT MARKINGS



PLAN

Date: 11/07/2005
 File: c:/projects/cmain06/cm324/details.dgn

REVISIONS	
NAME	DATE

ILLINOIS DEPARTMENT OF TRANSPORTATION
PAVEMENT MARKING DETAILS
 F.A.P. 623 (U.S. 6) SECTION (30)1-1
 LASALLE COUNTY
 STA. 1556 + 25

DATE 12/20/2005

DRAWN BY RLW