





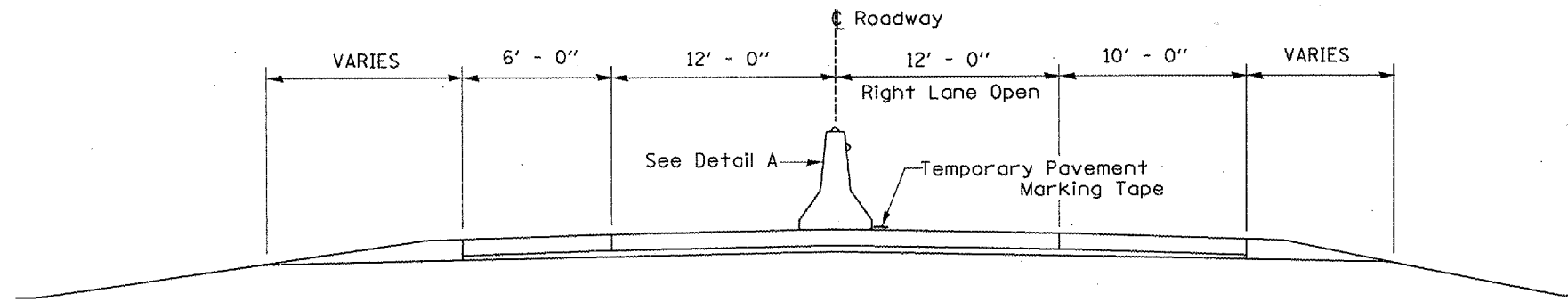


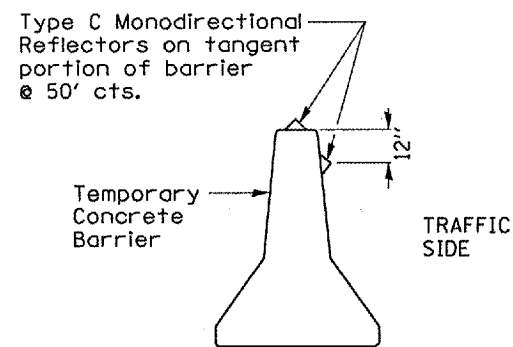
F.A.I. RTE.	SECTION	COUNTY	TOTAL SHEETS	SHEET NO.
55	D-3 BRIDGE PAINTING 2006-1	LIVINGSTON & GRUNDY	12	6
ILLINOIS			STATE AID PROJECT	

**LENGEND**

-  Work Zone
-  Type II barricade, drum or vertical barricade with steady burn monodirectional light
-  Temporary concrete barrier
-  Type C Monodirectional reflector
-  Vertical panel with steady burn monodirectional light
-  Impact attenuator

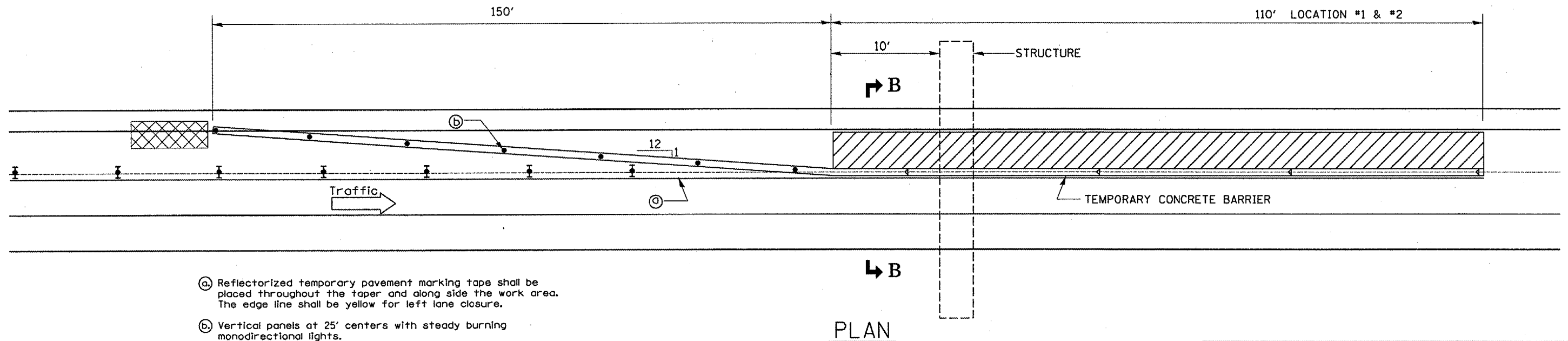


**SECTION B-B**



**DETAIL A**

Note: Color of reflectors shall match the color of the adjacent temporary pavement striping.



- (a) ReflectORIZED temporary pavement marking tape shall be placed throughout the taper and along side the work area. The edge line shall be yellow for left lane closure.
- (b) Vertical panels at 25' centers with steady burning monodirectional lights.

**PLAN**

REVISIONS	
NAME	DATE

ILLINOIS DEPARTMENT OF TRANSPORTATION  
**TRAFFIC CONTROL DETAILS**  
**LEFT LANE CLOSURE**  
 SCALE: VERT. \_\_\_\_\_  
 HORIZ. \_\_\_\_\_  
 DATE 01/19/06  
 DRAWN BY RW  
 CHECKED BY \_\_\_\_\_

**Work this sheet with Traffic Control Standards 701400 & 701402**

Date: 01/19/06  
 File: c:/projects/bridgepaint06/2006-1/details.dgn