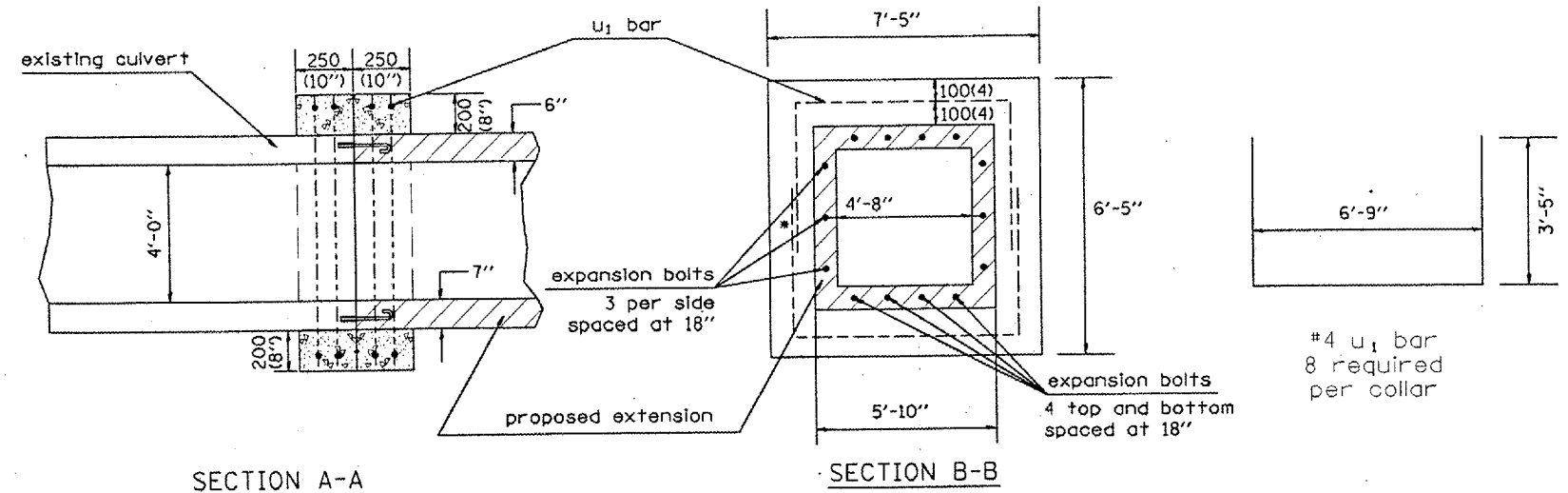


68379

F.A.S. RTE.	SECTION	COUNTY	TOTAL SHEETS	SHEET NO.
380		KNOX	35	16
• 04 CULVERT EXT/REPAIR 2006				

• minimum 1' lap on u₁ bars

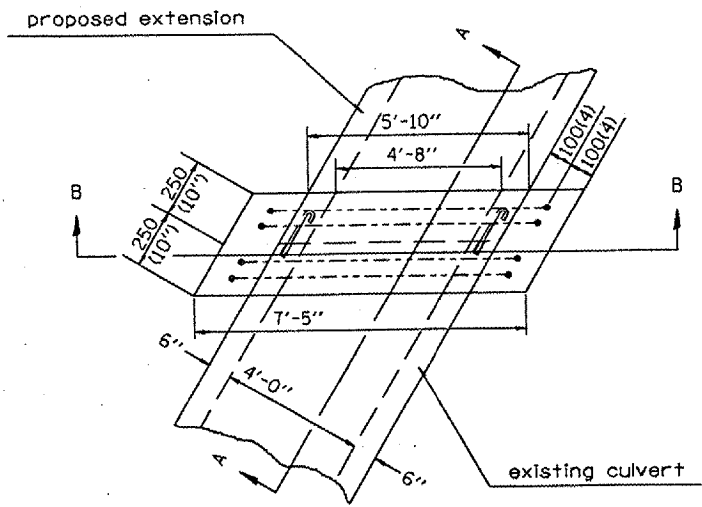


GENERAL NOTES

1. The collar shall be constructed entirely of CLASS SI CONCRETE and in accordance with the applicable portions of section 503 of the Standard Specifications. REINFORCEMENT BARS shall conform to section 508.
 2. Expansion bolts shall consist of approved expansions anchors, and M20(3/4) hook bolts which conform to Section 1006.09. These bolts shall extend at least 225 (9) into the new concrete.
- Dimensions for ASTM C789.

BILL OF MATERIAL

Bar	No.	Size	Length	Shape
u ₁	16	#4	13'-9"	L
Concrete Collars		Cu. Yd.	1.9	
Reinforcement Bars		Pound	147	



CONCRETE COLLAR PLAN

All dimensions are in millimeters (Inches) unless otherwise noted.

ILLINOIS DEPARTMENT OF TRANSPORTATION

COLLAR DETAIL
STA. 1850+03.98
LOCATION 4