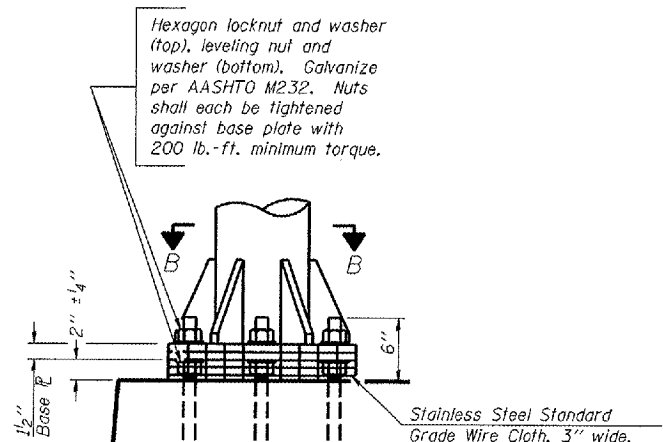
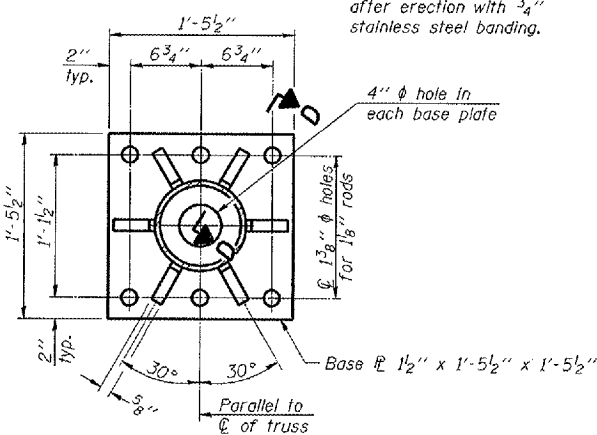


F.A. RTE.	SECTION	COUNTY	TOTAL SHEETS	SHEET NO.
VAR	D4 SIGN TRUSS REPAIR	KNOX	14	7
STA.	TO STA.			
FED. ROAD DIST. NO.	ILLINOIS FED. AID PROJECT			



DETAIL B

Ribs shall be cut to fit slope of pipe.

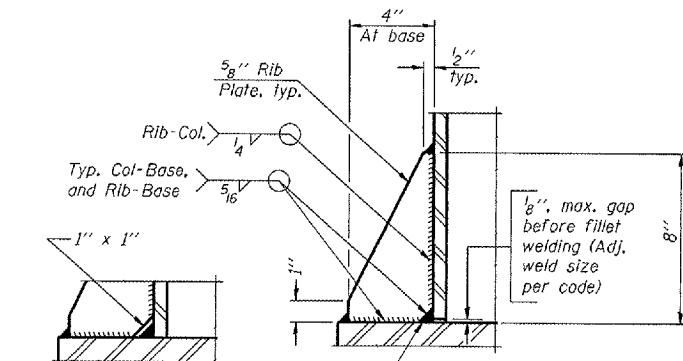


SECTION B-B

NUMBER	REVISION	DATE

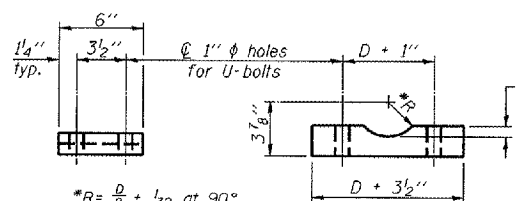
OS-A-4A

1-7-05



SECTION D-D

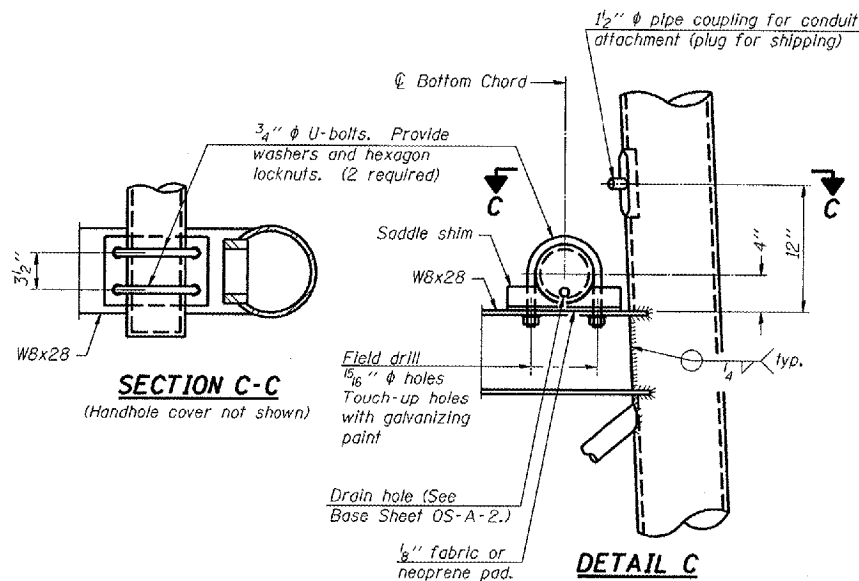
** Alternate detail if welding col. to base plate first, then snip inside corner of ribs. Terminate weld on rib 1/4" from snip.



SADDLE SHIM DETAIL

ASTM B26 Alloy 356-F
or
ASTM B209 Alloy 6061-T651
(4 required per sign truss)

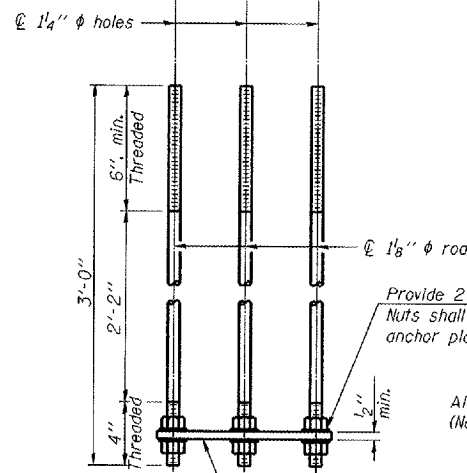
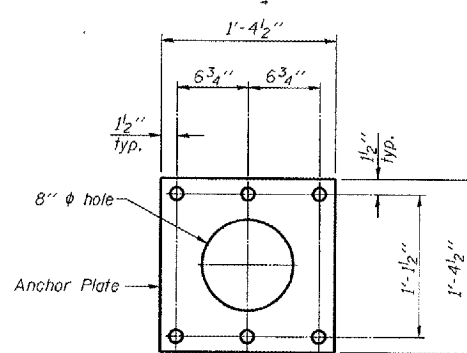
Truss Chord Nominal Dia.	a
5"	3 3/4"
5 1/2"	4 3/8"
6"	5 1/8"
6 1/2"	6 1/8"



SECTION C-C

(Handhole cover not shown)

DETAIL C



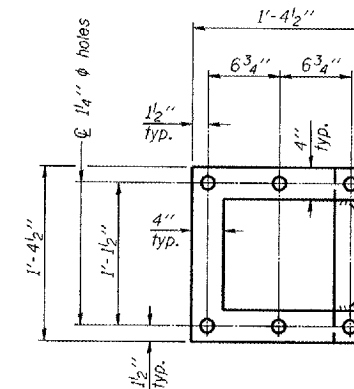
ANCHOR ROD DETAIL
Spread Footing Foundation

Provide 2 uncoated nuts per rod. Nuts shall be "snug tight" against anchor plate.

All Thread = NC (National Coarse)

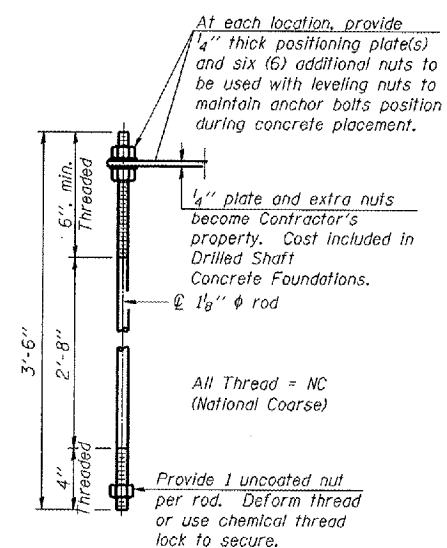
Anchor rods shall conform to AASHTO M314 Grade 36 or 55 and meet Charpy V-Notch (CVN) energy of 15 lb.-ft. at 40° F. Galvanize upper 12" per AASHTO M232. No welding shall be permitted on rods.

TYPE I-A TRUSS
8" ϕ PIPE SUPPORT FRAME DETAILS



POSITIONING PLATE(S)

Optionally may use four (4) separate bars. Weld to maintain perpendicularity.



ANCHOR ROD DETAIL
Drilled Shaft Foundation

OVERHEAD SIGN STRUCTURES
SUPPORT FRAME DETAILS ALUMINUM TRUSS

STRUCTURE # 4S048U150L012.1
D4 SIGN
TRUSS REPAIR 2006