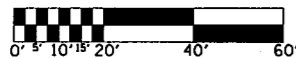


F.A. RTE.	SECTION	COUNTY	TOTAL SHEETS	SHEET NO.
332	(482-2) TS	VERMILION	7	5
STA.		TO STA.		
FED. ROAD DIST. NO.		ILLINOIS FED. AID PROJECT		

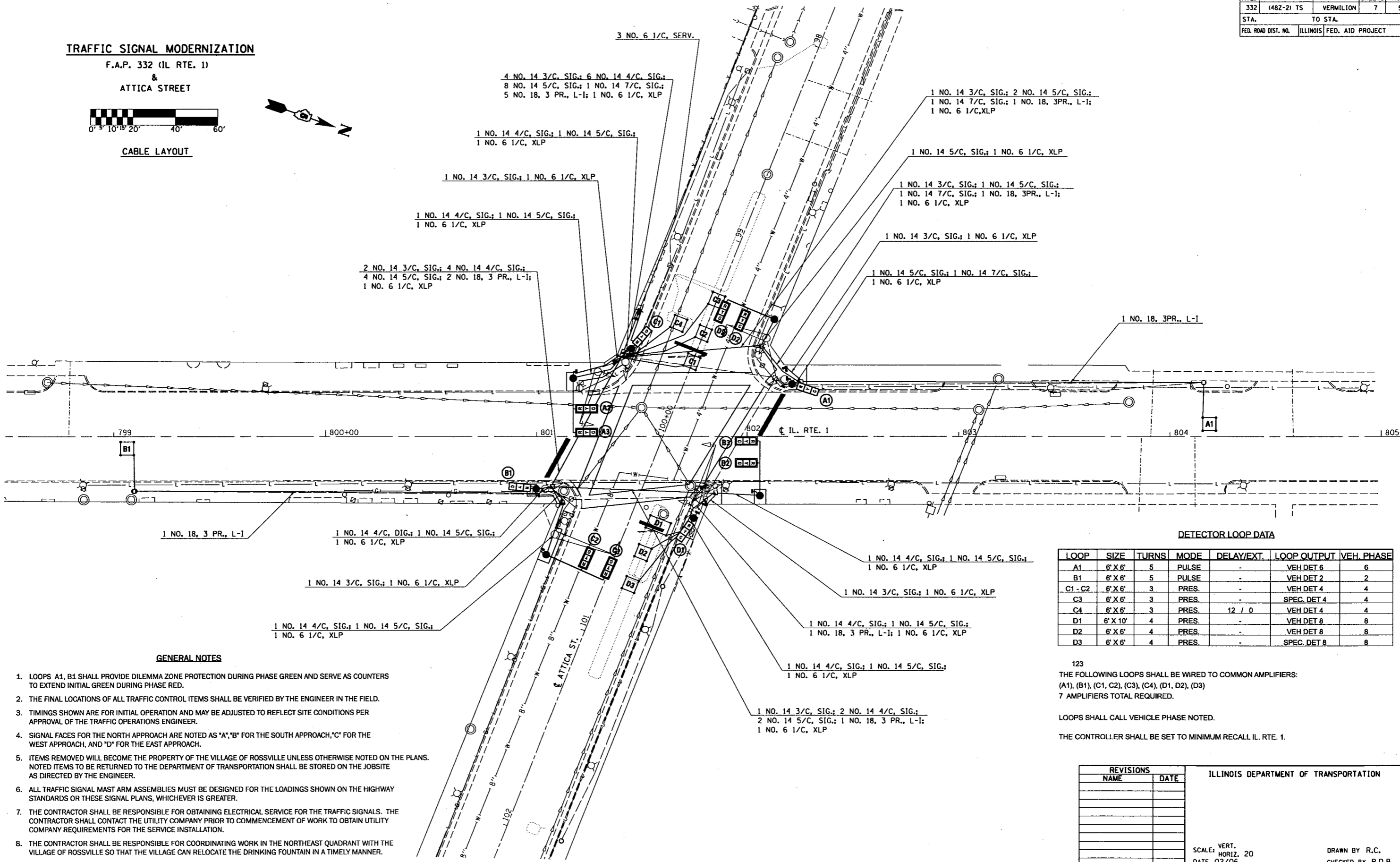
TRAFFIC SIGNAL MODERNIZATION

F.A.P. 332 (IL RTE. 1)

&
ATTICA STREET



CABLE LAYOUT



2 NO. 14 3/C, SIG.; 4 NO. 14 4/C, SIG.;
4 NO. 14 5/C, SIG.; 2 NO. 18, 3 PR., L-I;
1 NO. 6 1/C, XLP

1 NO. 14 4/C, SIG.; 1 NO. 14 5/C, SIG.;
1 NO. 6 1/C, XLP

1 NO. 14 3/C, SIG.; 1 NO. 6 1/C, XLP

1 NO. 14 4/C, SIG.; 1 NO. 14 5/C, SIG.;
1 NO. 6 1/C, XLP

4 NO. 14 3/C, SIG.; 6 NO. 14 4/C, SIG.;
8 NO. 14 5/C, SIG.; 1 NO. 14 7/C, SIG.;
5 NO. 18, 3 PR., L-I; 1 NO. 6 1/C, XLP

3 NO. 6 1/C, SERV.

1 NO. 14 3/C, SIG.; 2 NO. 14 5/C, SIG.;
1 NO. 14 7/C, SIG.; 1 NO. 18, 3PR., L-I;
1 NO. 6 1/C, XLP

1 NO. 14 5/C, SIG.; 1 NO. 6 1/C, XLP

1 NO. 14 3/C, SIG.; 1 NO. 14 5/C, SIG.;
1 NO. 14 7/C, SIG.; 1 NO. 18, 3PR., L-I;
1 NO. 6 1/C, XLP

1 NO. 14 3/C, SIG.; 1 NO. 6 1/C, XLP

1 NO. 14 5/C, SIG.; 1 NO. 14 7/C, SIG.;
1 NO. 6 1/C, XLP

1 NO. 18, 3PR., L-I

1 NO. 18, 3 PR., L-I

1 NO. 14 4/C, SIG.; 1 NO. 14 5/C, SIG.;
1 NO. 6 1/C, XLP

1 NO. 14 3/C, SIG.; 1 NO. 6 1/C, XLP

1 NO. 14 4/C, SIG.; 1 NO. 14 5/C, SIG.;
1 NO. 6 1/C, XLP

1 NO. 14 4/C, SIG.; 1 NO. 14 5/C, SIG.;
1 NO. 6 1/C, XLP

1 NO. 14 3/C, SIG.; 1 NO. 6 1/C, XLP

1 NO. 14 4/C, SIG.; 1 NO. 14 5/C, SIG.;
1 NO. 18, 3 PR., L-I; 1 NO. 6 1/C, XLP

1 NO. 14 4/C, SIG.; 1 NO. 14 5/C, SIG.;
1 NO. 6 1/C, XLP

1 NO. 14 3/C, SIG.; 2 NO. 14 4/C, SIG.;
2 NO. 14 5/C, SIG.; 1 NO. 18, 3 PR., L-I;
1 NO. 6 1/C, XLP

GENERAL NOTES

1. LOOPS A1, B1 SHALL PROVIDE DILEMMA ZONE PROTECTION DURING PHASE GREEN AND SERVE AS COUNTERS TO EXTEND INITIAL GREEN DURING PHASE RED.
2. THE FINAL LOCATIONS OF ALL TRAFFIC CONTROL ITEMS SHALL BE VERIFIED BY THE ENGINEER IN THE FIELD.
3. TIMINGS SHOWN ARE FOR INITIAL OPERATION AND MAY BE ADJUSTED TO REFLECT SITE CONDITIONS PER APPROVAL OF THE TRAFFIC OPERATIONS ENGINEER.
4. SIGNAL FACES FOR THE NORTH APPROACH ARE NOTED AS "A," "B" FOR THE SOUTH APPROACH, "C" FOR THE WEST APPROACH, AND "D" FOR THE EAST APPROACH.
5. ITEMS REMOVED WILL BECOME THE PROPERTY OF THE VILLAGE OF ROSSVILLE UNLESS OTHERWISE NOTED ON THE PLANS. NOTED ITEMS TO BE RETURNED TO THE DEPARTMENT OF TRANSPORTATION SHALL BE STORED ON THE JOBSITE AS DIRECTED BY THE ENGINEER.
6. ALL TRAFFIC SIGNAL MAST ARM ASSEMBLIES MUST BE DESIGNED FOR THE LOADINGS SHOWN ON THE HIGHWAY STANDARDS OR THESE SIGNAL PLANS, WHICHEVER IS GREATER.
7. THE CONTRACTOR SHALL BE RESPONSIBLE FOR OBTAINING ELECTRICAL SERVICE FOR THE TRAFFIC SIGNALS. THE CONTRACTOR SHALL CONTACT THE UTILITY COMPANY PRIOR TO COMMENCEMENT OF WORK TO OBTAIN UTILITY COMPANY REQUIREMENTS FOR THE SERVICE INSTALLATION.
8. THE CONTRACTOR SHALL BE RESPONSIBLE FOR COORDINATING WORK IN THE NORTHEAST QUADRANT WITH THE VILLAGE OF ROSSVILLE SO THAT THE VILLAGE CAN RELOCATE THE DRINKING FOUNTAIN IN A TIMELY MANNER.

DETECTOR LOOP DATA

LOOP	SIZE	TURNS	MODE	DELAY/EXT.	LOOP OUTPUT	VEH. PHASE
A1	6' X 6'	5	PULSE	-	VEH DET 6	6
B1	6' X 6'	5	PULSE	-	VEH DET 2	2
C1 - C2	6' X 6'	3	PRES.	-	VEH DET 4	4
C3	6' X 6'	3	PRES.	-	SPEC. DET 4	4
C4	6' X 6'	3	PRES.	12 / 0	VEH DET 4	4
D1	6' X 10'	4	PRES.	-	VEH DET 8	8
D2	6' X 6'	4	PRES.	-	VEH DET 8	8
D3	6' X 6'	4	PRES.	-	SPEC. DET 8	8

123

THE FOLLOWING LOOPS SHALL BE WIRED TO COMMON AMPLIFIERS:
(A1), (B1), (C1, C2), (C3), (C4), (D1, D2), (D3)
7 AMPLIFIERS TOTAL REQUIRED.

LOOPS SHALL CALL VEHICLE PHASE NOTED.

THE CONTROLLER SHALL BE SET TO MINIMUM RECALL IL. RTE. 1.

REVISIONS	
NAME	DATE

ILLINOIS DEPARTMENT OF TRANSPORTATION

SCALE: VERT.
HORIZ. 20
DATE 02/06

DRAWN BY R.C.
CHECKED BY R.D.B.