

F.A.P. RTE.	SECTION	COUNTY	TOTAL SHEETS	SHEET NO.
332	(48Z-2)TS	VERMILION	7	1

STATE OF ILLINOIS
DEPARTMENT OF TRANSPORTATION
DIVISION OF HIGHWAYS

**PROPOSED
HIGHWAY PLANS**

FAP ROUTE 332 (ILLINOIS ROUTE 1)
SECTION (48Z-2)TS

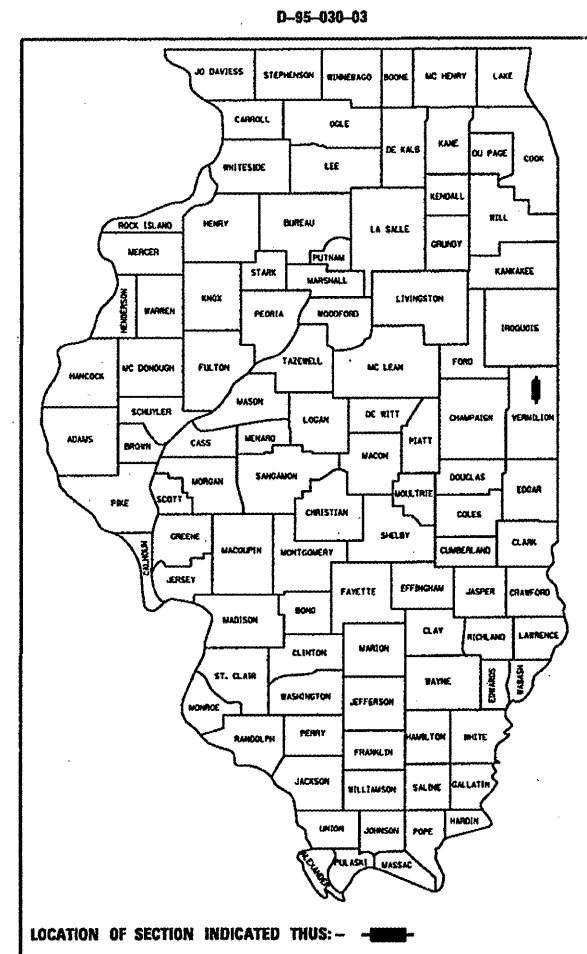
VERMILION COUNTY

C-95-056-03

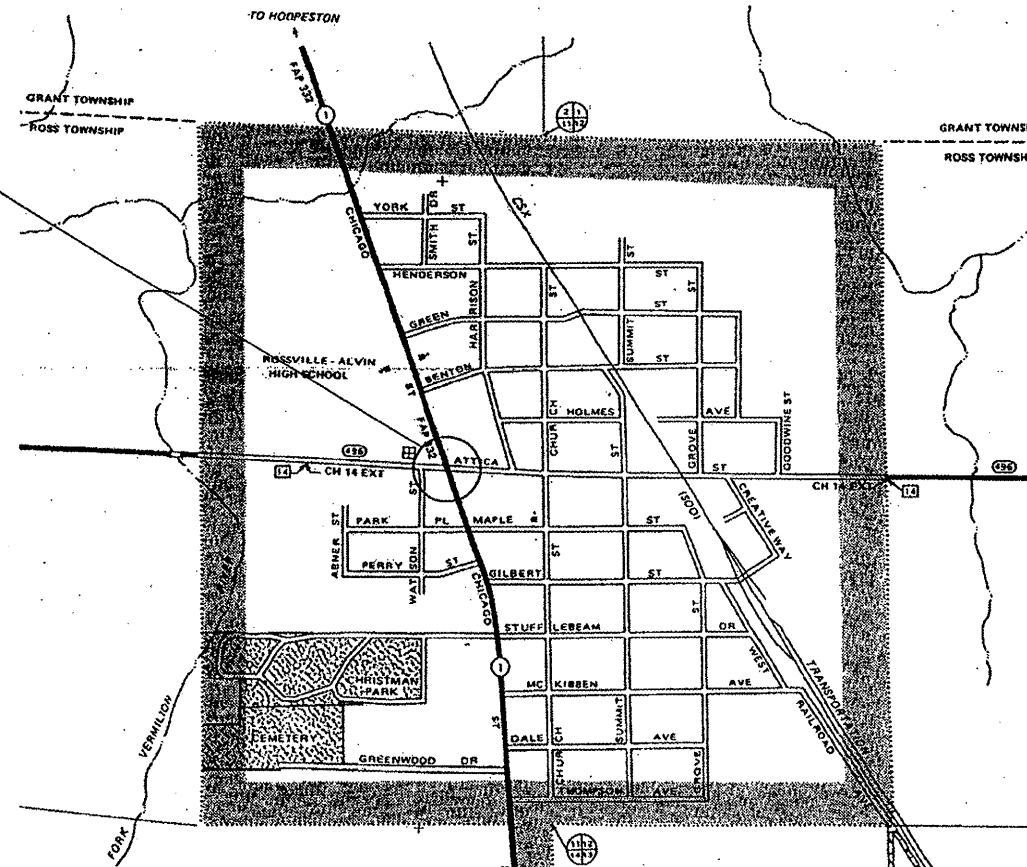
TRAFFIC SIGNAL MODERNIZATION

VILLAGE OF ROSSVILLE

FOR INDEX OF SHEETS, SEE SHEET NO. 2
FOR SUMMARY OF QUANTITIES, SEE SHEET NO. 3

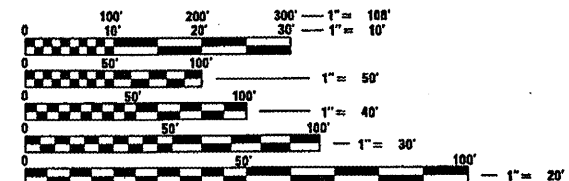


IL. ROUTE 1 & ATTICA ST.
SECTION (48Z-2)TS



T 22 N

R 12 W R 11 W



FULL SIZE PLANS HAVE BEEN PREPARED USING STANDARD ENGINEERING SCALES. REDUCED SIZED PLANS WILL NOT CONFORM TO STANDARD SCALES. IN MAKING MEASUREMENTS ON REDUCED PLANS, THE ABOVE SCALES MAY BE USED.

J.U.L.I.E.
JOINT UTILITY LOCATION INFORMATION FOR EXCAVATION
1-800-992-0123 ROSS TOWNSHIP

CONTRACT NO. 70312

STATE OF ILLINOIS
DEPARTMENT OF TRANSPORTATION
DIVISION OF HIGHWAYS

SUBMITTED Feb 10, 2007
[Signature]
DEPUTY DIRECTOR OF HIGHWAYS, REGION ENGINEER

March 24, 2006
[Signature]
ENGINEER OF DESIGN AND ENVIRONMENT

March 24, 2006
[Signature]
DIRECTOR OF HIGHWAYS, CHIEF ENGINEER

PRINTED BY THE AUTHORITY
OF THE STATE OF ILLINOIS

PLOT DATE: 2/16/06
FILE NAME: c:\projects\70312\48z2\48z2.dwg
PLOT SCALE: 1/4" = 10'
USER NAME: craige

PROJECT ENGINEER: SCOTT NEIHART
(217)465-4181

DESIGNER: ROGER BIGGS

F.A. RTE.	SECTION	COUNTY	TOTAL SHEETS	SHEET NO.
332	482-21 TS	VERMILION	7	2
STA.		TO STA.		
FED. ROAD DIST. NO.		ILLINOIS	FED. AID PROJECT	

GENERAL NOTES

G.N.-100

ENGLISH UNITS OF MEASUREMENT SHALL GOVERN OVER AND SUPERSEDE ANY METRIC UNITS SHOWN IN THIS CONTRACT. WHERE INCLUDED, METRIC UNITS ARE FOR INFORMATION ONLY.

G.N.-107.31

UTILITY LINES WERE PLOTTED FROM INFORMATION FURNISHED BY THE VARIOUS UTILITY COMPANIES INVOLVED (QUALITY LEVEL C &/OR QUALITY LEVEL D) AND THE ACCURACY SHOULD BE CONSIDERED APPROXIMATE ONLY.

UTILITY COMPANIES MAY BE ADJUSTING THEIR FACILITIES DURING CONSTRUCTION. THE CONTRACTOR SHALL COOPERATE WITH THESE ORGANIZATIONS WHILE THESE ADJUSTMENTS ARE BEING PERFORMED. J.U.L.I.E. - JOINT UTILITY LOCATION INFORMATION FOR EXCAVATORS SYSTEM (800)892-0123.

G.N.-202

GRADING SHALL BE DONE BY HAND AROUND LIGHT POLES, UTILITY POLES, SIGN POSTS, SHRUBS, TREES OR OTHER NATURAL OR MAN-MADE OBJECTS WHERE SHALLOW FILLS OR CUTS ARE ADJACENT TO THE ITEMS. IT IS THE INTENT THAT THE LIMITS OF CONSTRUCTION BE SUCH AS TO PRESERVE IN THE ORIGINAL STATE AS MUCH AREA OF TEMPORARY EASEMENTS AS POSSIBLE. THE DECISION AS TO ITEMS TO REMAIN IN PLACE SHALL BE AS DIRECTED BY THE ENGINEER.

THIS WORK WILL NOT BE PAID FOR SEPARATELY, BUT SHALL BE CONSIDERED INCLUDED IN THE CONTRACT UNIT PRICE PER CUBIC YARD FOR EARTH EXCAVATION AND NO ADDITIONAL COMPENSATION WILL BE ALLOWED.

G.N.-550

BEFORE ORDERING STORM SEWERS, THE CONTRACTOR SHALL CONSULT THE ENGINEER FOR THE EXACT LENGTHS.

G.N.-551

EXISTING STORM SEWERS SHALL BE REMOVED IN ACCORDANCE WITH SECTION 551 OF THE STANDARD SPECIFICATIONS EXCEPT THAT THE CONTRACTOR WILL NOT BE REQUIRED TO SALVAGE ANY EXISTING SEWER PIPE.

INDEX OF SHEETS

- 1 COVER SHEET
- 2 INDEX OF SHEETS, STANDARDS IN THE PLANS & GENERAL NOTES
- 3 SUMMARY OF QUANTITIES
- 4-6 TRAFFIC SIGNAL PLANS
- 7 DETAIL OF STORM SEWER WORK AND SIDEWALK CUTS

STANDARDS IN THE PLANS

- 424001-04 CURB RAMPS FOR SIDEWALKS
- 442201-01 CLASS C AND D PATCHES
- 602301-01 INLET, TYPE A
- 604091-01 FRAME AND GRATE, TYPE 24
- 606001-02 CONCRETE CURB TYPE B AND COMBINATION CONCRETE CURB AND GUTTER
- 701501-03 TRAFFIC CONTROL
- 701701-04 TRAFFIC CONTROL
- 701801-03 TRAFFIC CONTROL
- 720001-01 TYPICAL PAVEMENT MARKINGS
- 805001 ELECTRICAL SERVICE INSTALLATION DETAILS
- 814001 CONCRETE HANDHOLES
- 814006 DOUBLE HANDHOLES
- 857001 STANDARD PHASE DESIGNATION DIAGRAMS AND PHASE SEQUENCES
- 873001 TRAFFIC SIGNAL GROUNDING
- 877001-02 STEEL MAST ARM ASSEMBLY AND POLE
- 878001-04 CONCRETE FOUNDATION DETAILS
- 880006 TRAFFIC SIGNAL MOUNTING DETAILS
- 886001 DETECTOR LOOP INSTALLATIONS
- 886006 TYPICAL LAYOUT FOR DETECTION LOOPS

F.A. RTE.	SECTION	COUNTY	TOTAL SHEETS	SHEET NO.
332	(482-2) T5	VERMILION	7	3
STA.		TO STA.		
FED. ROAD DIST. NO.	ILLINOIS	FED. AID PROJECT		

70312

SUMMARY OF QUANTITIES

LOCATION OF WORK:

FAP 332 IL. RTE. 1 & ATTICA ST. 100% STATE
 FAP 332 IL. RTE. 1 & ATTICA ST. 100% STATE

LOCATION OF WORK:

FAP 332 IL. RTE. 1 & ATTICA ST. 100% STATE
 FAP 332 IL. RTE. 1 & ATTICA ST. 100% STATE

CONSTRUCTION TYPE CODE:

I000-1A Y031-1F

CONSTRUCTION TYPE CODE:

I000-1A Y031-1F

CODE NO	ITEM	UNIT	TOTAL QUANTITY	I000-1A QUANTITY	Y031-1F QUANTITY
20800150	TRENCH BACKFILL	CU YD	1.5	1.5	
* 42400200	PORTLAND CEMENT CONCRETE SIDEWALK 5 INCH	SQ FT	1,170.0	1,170.0	
* 42400610	TEMPORARY SIDEWALK	SQ FT	624.0	624.0	
* 44000500	COMBINATION CURB AND GUTTER REMOVAL	FOOT	21.0	21.0	
* 44000600	SIDEWALK REMOVAL	SQ FT	1,184.0	1,184.0	
* 44201377	CLASS C PATCHES, TYPE II, 12 INCH	SQ YD	6.0	6.0	
* 55019500	STORM SEWERS, TYPE 1, REINFORCED CONCRETE CULVERT, STORM DRAIN, AND SEWER PIPE, CLASS IV 12"	FOOT	6.0	6.0	
* 55100500	STORM SEWER REMOVAL 12"	FOOT	4.0	4.0	
* 60237470	INLETS, TYPE A, TYPE 24 FRAME AND GRATE	EACH	1.0	1.0	
* 60405740	FRAMES AND GRATES TO BE REMOVED	EACH	1.0	1.0	
* 60500060	REMOVING INLETS	EACH	1.0	1.0	
* 60605000	COMBINATION CONCRETE CURB AND GUTTER, TYPE B-6.24	FOOT	21.0	21.0	
67100100	MOBILIZATION	L SUM	1.0		1.0
70102620	TRAFFIC CONTROL AND PROTECTION, STANDARD 701501	L SUM	1.0		1.0
70102635	TRAFFIC CONTROL AND PROTECTION, STANDARD 701701	L SUM	1.0		1.0
70102640	TRAFFIC CONTROL AND PROTECTION, STANDARD 701801	L SUM	1.0		1.0
* 78003130	PREFORMED PLASTIC PAVEMENT MARKING, TYPE B - LINE 6"	FOOT	430.0		430.0
* 78003180	PREFORMED PLASTIC PAVEMENT MARKING, TYPE B - LINE 24"	FOOT	73.0		73.0
* 78300100	PAVEMENT MARKING REMOVAL	SQ FT	90.0		90.0
80500105	SERVICE INSTALLATION, TYPE A (MODIFIED)	EACH	1.0		1.0
81012300	CONDUIT IN TRENCH, 1" DIA., PVC	FOOT	72.0		72.0
81012600	CONDUIT IN TRENCH, 2" DIA., PVC	FOOT	175.0		175.0
81013100	CONDUIT IN TRENCH, 5" DIA., PVC	FOOT	18.0		18.0
81021540	CONDUIT, AUGERED 1 1/2" DIA., PVC	FOOT	545.0		545.0
81021570	CONDUIT, AUGERED 3" DIA., PVC	FOOT	215.0		215.0
81400100	HANDHOLE	EACH	5.0		5.0
81400300	DOUBLE HANDHOLE	EACH	1.0		1.0
81500200	TRENCH AND BACKFILL FOR ELECTRICAL WORK	FOOT	265.0		265.0
85700200	FULL-ACTUATED CONTROLLER AND TYPE IV CABINET	EACH	1.0		1.0
86600010	GULFBOX JUNCTION	EACH	2.0		2.0

CODE NO	ITEM	UNIT	TOTAL QUANTITY	I000-1A QUANTITY	Y031-1F QUANTITY
86600020	GULFBOX JUNCTION REMOVAL	EACH	2.0		2.0
87301225	ELECTRIC CABLE IN CONDUIT, SIGNAL NO. 14 3C	FOOT	555.0		555.0
87301235	ELECTRIC CABLE IN CONDUIT, SIGNAL NO. 14 4C	FOOT	932.0		932.0
87301245	ELECTRIC CABLE IN CONDUIT, SIGNAL NO. 14 5C	FOOT	1,508.0		1,508.0
87301255	ELECTRIC CABLE IN CONDUIT, SIGNAL NO. 14 7C	FOOT	160.0		160.0
87301515	ELECTRIC CABLE IN CONDUIT, LEAD-IN, NO. 18 3 PAIR	FOOT	945.0		945.0
87502680	TRAFFIC SIGNAL POST, ALUMINUM 14 FT.	EACH	4.0		4.0
87601200	PEDESTRIAN PUSH-BUTTON POST, GALVANIZED STEEL, TYPE II	EACH	4.0		4.0
87700160	STEEL MAST ARM ASSEMBLY AND POLE, 24 FT.	EACH	1.0		1.0
87700170	STEEL MAST ARM ASSEMBLY AND POLE, 26 FT.	EACH	2.0		2.0
87700190	STEEL MAST ARM ASSEMBLY AND POLE, 30 FT.	EACH	1.0		1.0
87800100	CONCRETE FOUNDATION, TYPE A	FOOT	12.4		12.4
87800215	CONCRETE FOUNDATION, TYPE D	EACH	3.5		3.5
87800400	CONCRETE FOUNDATION, TYPE E 30-INCH DIAMETER	FOOT	41.0		41.0
88200100	TRAFFIC SIGNAL BACKPLATE	EACH	8.0		8.0
88500100	INDUCTIVE LOOP DETECTOR	EACH	7.0		7.0
88600100	DETECTOR LOOP, TYPE I	FOOT	389.0		389.0
88800100	PEDESTRIAN PUSH-BUTTON	EACH	8.0		8.0
89502375	REMOVE EXISTING TRAFFIC SIGNAL EQUIPMENT	EACH	1.0		1.0
89502380	REMOVE EXISTING HANDHOLE	EACH	4.0		4.0
89502385	REMOVE EXISTING CONCRETE FOUNDATION	EACH	8.0		8.0
X8730027	ELECTRIC CABLE IN CONDUIT, GROUNDING, NO. 6 1C	FOOT	624.0		624.0
X8801300	SIGNAL HEAD ,POLYCARBONATE, LED, 1-FACE, 3-SECTION, BRACKET MOUNTED	EACH	4.0		4.0
X8801310	SIGNAL HEAD ,POLYCARBONATE, LED, 1-FACE, 3-SECTION, MAST ARM MOUNTED	EACH	8.0		8.0
X8810395	PEDESTRIAN SIGNAL HEAD, POLYCARBONATE,LED, 1-FACE, BRACKET MOUNTED	EACH	6.0		6.0
X8810495	PEDESTRIAN SIGNAL HEAD, POLYCARBONATE, LED, 2-FACE, BRACKET MOUNTED	EACH	1.0		1.0

* SPECIALTY ITEMS

F.A. RTE.	SECTION	COUNTY	TOTAL SHEETS	SHEET NO.
332	(482-2) TS	VERMILION	7	4
STA.		TO STA.		
FED. ROAD DIST. NO.	ILLINOIS	FED. AID PROJECT		

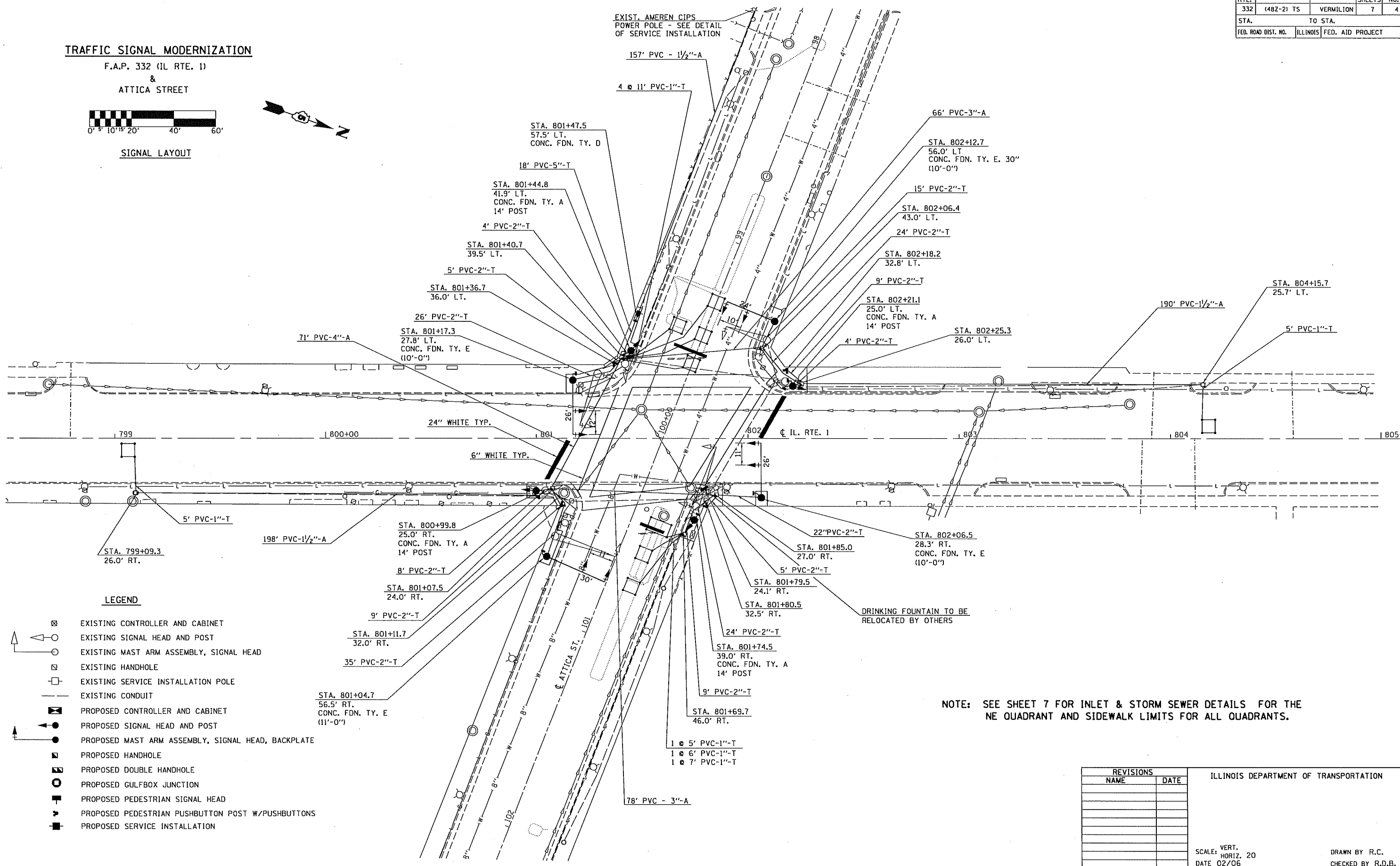
TRAFFIC SIGNAL MODERNIZATION

F.A.P. 332 (IL RTE. 1)

&
ATTICA STREET



SIGNAL LAYOUT



LEGEND

- EXISTING CONTROLLER AND CABINET
- EXISTING SIGNAL HEAD AND POST
- EXISTING MAST ARM ASSEMBLY, SIGNAL HEAD
- EXISTING HANDHOLE
- EXISTING SERVICE INSTALLATION POLE
- EXISTING CONDUIT
- PROPOSED CONTROLLER AND CABINET
- PROPOSED SIGNAL HEAD AND POST
- PROPOSED MAST ARM ASSEMBLY, SIGNAL HEAD, BACKPLATE
- PROPOSED HANDHOLE
- PROPOSED DOUBLE HANDHOLE
- PROPOSED GULFBOX JUNCTION
- PROPOSED PEDESTRIAN SIGNAL HEAD
- PROPOSED PEDESTRIAN PUSHBUTTON POST W/PUSHBUTTONS
- PROPOSED SERVICE INSTALLATION

NOTE: SEE SHEET 7 FOR INLET & STORM SEWER DETAILS FOR THE NE QUADRANT AND SIDEWALK LIMITS FOR ALL QUADRANTS.

REVISIONS	
NAME	DATE

ILLINOIS DEPARTMENT OF TRANSPORTATION

SCALE: VERT. 20
HORIZ. 20
DATE 02/06

DRAWN BY R.C.
CHECKED BY R.D.B.

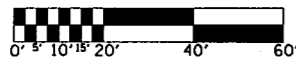
PLOT DATE = 3/3/2006
FILE NAME = c:\p\projects\70312\signal\70312.dwg
USER NAME = craig

F.A. RTE.	SECTION	COUNTY	TOTAL SHEETS	SHEET NO.
332	(482-2) TS	VERMILION	7	5
STA.		TO STA.		
FED. ROAD DIST. NO.	ILLINOIS	FED. AID PROJECT		

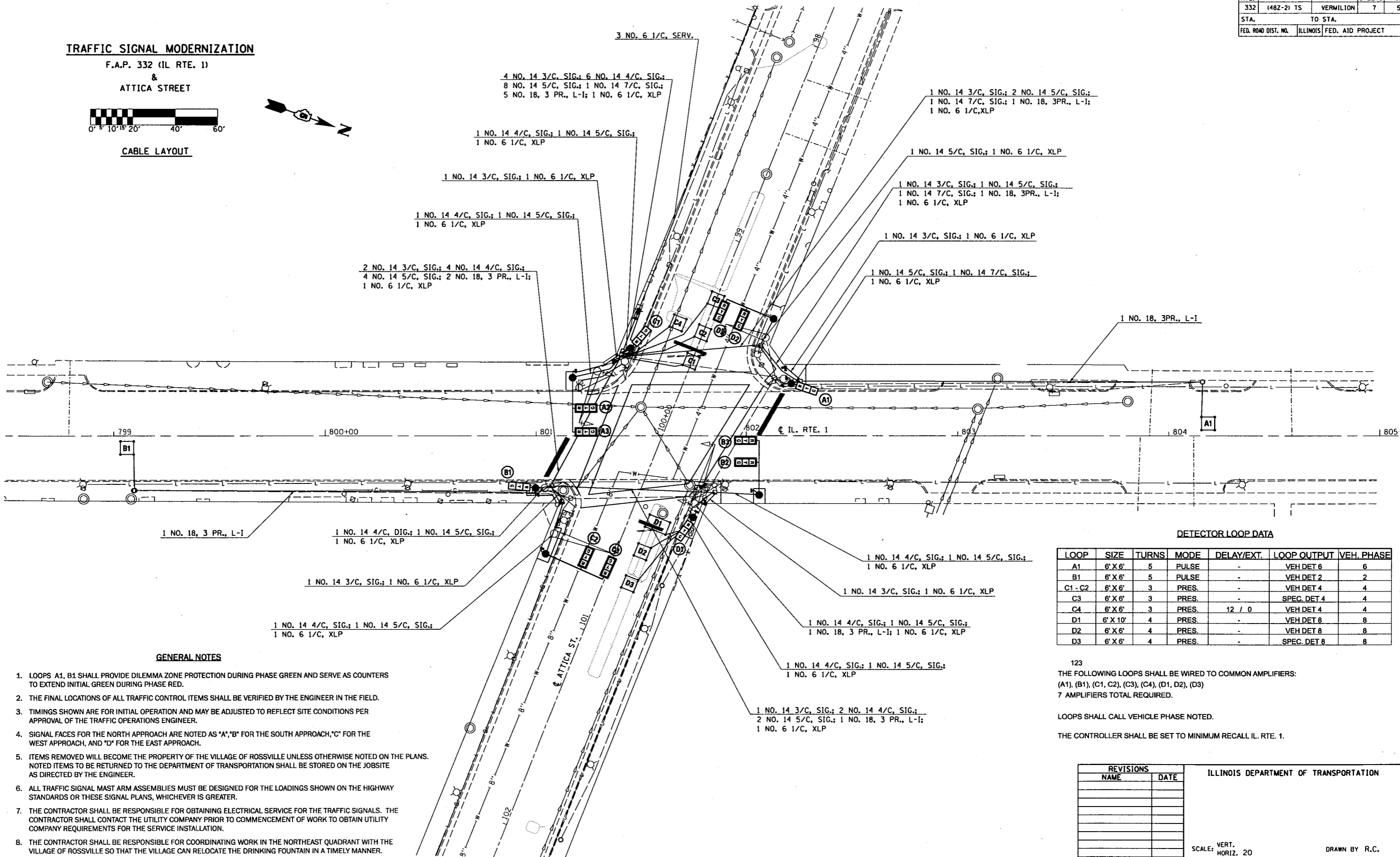
TRAFFIC SIGNAL MODERNIZATION

F.A.P. 332 (IL RTE. 1)

&
ATTICA STREET



CABLE LAYOUT



2 NO. 14 3/C, SIG.; 4 NO. 14 4/C, SIG.;
4 NO. 14 5/C, SIG.; 2 NO. 18, 3 PR., L-I;
1 NO. 6 1/C, XLP

1 NO. 14 4/C, SIG.; 1 NO. 14 5/C, SIG.;
1 NO. 6 1/C, XLP

1 NO. 14 3/C, SIG.; 1 NO. 6 1/C, XLP

1 NO. 14 4/C, SIG.; 1 NO. 14 5/C, SIG.;
1 NO. 6 1/C, XLP

4 NO. 14 3/C, SIG.; 6 NO. 14 4/C, SIG.;
8 NO. 14 5/C, SIG.; 1 NO. 14 7/C, SIG.;
5 NO. 18, 3 PR., L-I; 1 NO. 6 1/C, XLP

3 NO. 6 1/C, SERV.

1 NO. 14 3/C, SIG.; 2 NO. 14 5/C, SIG.;
1 NO. 14 7/C, SIG.; 1 NO. 18, 3PR., L-I;
1 NO. 6 1/C, XLP

1 NO. 14 5/C, SIG.; 1 NO. 6 1/C, XLP

1 NO. 14 3/C, SIG.; 1 NO. 14 5/C, SIG.;
1 NO. 14 7/C, SIG.; 1 NO. 18, 3PR., L-I;
1 NO. 6 1/C, XLP

1 NO. 14 3/C, SIG.; 1 NO. 6 1/C, XLP

1 NO. 14 5/C, SIG.; 1 NO. 14 7/C, SIG.;
1 NO. 6 1/C, XLP

1 NO. 18, 3PR., L-I

1 NO. 18, 3 PR., L-I

1 NO. 14 4/C, SIG.; 1 NO. 14 5/C, SIG.;
1 NO. 6 1/C, XLP

1 NO. 14 3/C, SIG.; 1 NO. 6 1/C, XLP

1 NO. 14 4/C, SIG.; 1 NO. 14 5/C, SIG.;
1 NO. 6 1/C, XLP

1 NO. 14 4/C, SIG.; 1 NO. 14 5/C, SIG.;
1 NO. 6 1/C, XLP

1 NO. 14 3/C, SIG.; 1 NO. 6 1/C, XLP

1 NO. 14 4/C, SIG.; 1 NO. 14 5/C, SIG.;
1 NO. 18, 3 PR., L-I; 1 NO. 6 1/C, XLP

1 NO. 14 4/C, SIG.; 1 NO. 14 5/C, SIG.;
1 NO. 6 1/C, XLP

1 NO. 14 3/C, SIG.; 2 NO. 14 4/C, SIG.;
2 NO. 14 5/C, SIG.; 1 NO. 18, 3 PR., L-I;
1 NO. 6 1/C, XLP

DETECTOR LOOP DATA

LOOP	SIZE	TURNS	MODE	DELAY/EXT.	LOOP OUTPUT	VEH. PHASE
A1	6' X 6'	5	PULSE	-	VEH DET 6	6
B1	6' X 6'	5	PULSE	-	VEH DET 2	2
C1 - C2	6' X 6'	3	PRES.	-	VEH DET 4	4
C3	6' X 6'	3	PRES.	-	SPEC. DET 4	4
C4	6' X 6'	3	PRES.	12 / 0	VEH DET 4	4
D1	6' X 10'	4	PRES.	-	VEH DET 8	8
D2	6' X 6'	4	PRES.	-	VEH DET 8	8
D3	6' X 6'	4	PRES.	-	SPEC. DET 8	8

123

THE FOLLOWING LOOPS SHALL BE WIRED TO COMMON AMPLIFIERS:
(A1), (B1), (C1, C2), (C3), (C4), (D1, D2), (D3)
7 AMPLIFIERS TOTAL REQUIRED.

LOOPS SHALL CALL VEHICLE PHASE NOTED.

THE CONTROLLER SHALL BE SET TO MINIMUM RECALL IL. RTE. 1.

GENERAL NOTES

- LOOPS A1, B1 SHALL PROVIDE DILEMMA ZONE PROTECTION DURING PHASE GREEN AND SERVE AS COUNTERS TO EXTEND INITIAL GREEN DURING PHASE RED.
- THE FINAL LOCATIONS OF ALL TRAFFIC CONTROL ITEMS SHALL BE VERIFIED BY THE ENGINEER IN THE FIELD.
- TIMINGS SHOWN ARE FOR INITIAL OPERATION AND MAY BE ADJUSTED TO REFLECT SITE CONDITIONS PER APPROVAL OF THE TRAFFIC OPERATIONS ENGINEER.
- SIGNAL FACES FOR THE NORTH APPROACH ARE NOTED AS "A", "B" FOR THE SOUTH APPROACH, "C" FOR THE WEST APPROACH, AND "D" FOR THE EAST APPROACH.
- ITEMS REMOVED WILL BECOME THE PROPERTY OF THE VILLAGE OF ROSSVILLE UNLESS OTHERWISE NOTED ON THE PLANS. NOTED ITEMS TO BE RETURNED TO THE DEPARTMENT OF TRANSPORTATION SHALL BE STORED ON THE JOBSITE AS DIRECTED BY THE ENGINEER.
- ALL TRAFFIC SIGNAL MAST ARM ASSEMBLIES MUST BE DESIGNED FOR THE LOADINGS SHOWN ON THE HIGHWAY STANDARDS OR THESE SIGNAL PLANS, WHICHEVER IS GREATER.
- THE CONTRACTOR SHALL BE RESPONSIBLE FOR OBTAINING ELECTRICAL SERVICE FOR THE TRAFFIC SIGNALS. THE CONTRACTOR SHALL CONTACT THE UTILITY COMPANY PRIOR TO COMMENCEMENT OF WORK TO OBTAIN UTILITY COMPANY REQUIREMENTS FOR THE SERVICE INSTALLATION.
- THE CONTRACTOR SHALL BE RESPONSIBLE FOR COORDINATING WORK IN THE NORTHEAST QUADRANT WITH THE VILLAGE OF ROSSVILLE SO THAT THE VILLAGE CAN RELOCATE THE DRINKING FOUNTAIN IN A TIMELY MANNER.

REVISIONS	
NAME	DATE

ILLINOIS DEPARTMENT OF TRANSPORTATION

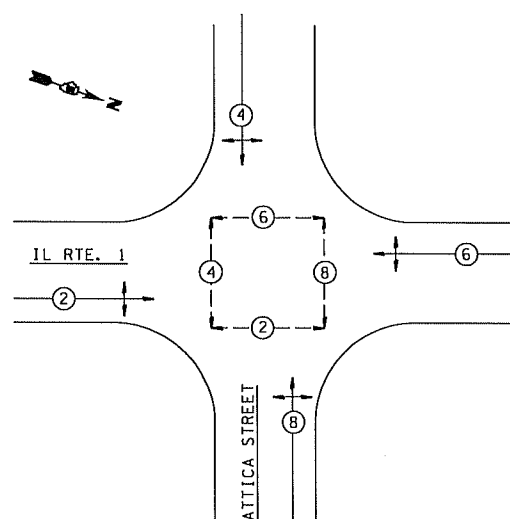
SCALE: VERT. HORIZ. 20
DATE 02/06

DRAWN BY R.C.
CHECKED BY R.D.B.

PLOT DATE: 2/18/2006
FILE NAME: c:\projects\70312\70312.dwg
USER: rca
CPLT: rca

F.A. RTE.	SECTION	COUNTY	TOTAL SHEETS	SHEET NO.
332	(482-2) TS	VERMILION	7	6
STA.		TO STA.		
FED. ROAD DIST. NO.	ILLINOIS	FED. AID PROJECT		

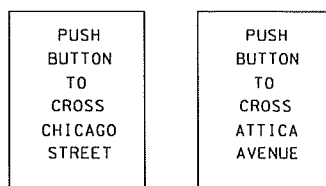
PHASE DESIGNATION DIAGRAM



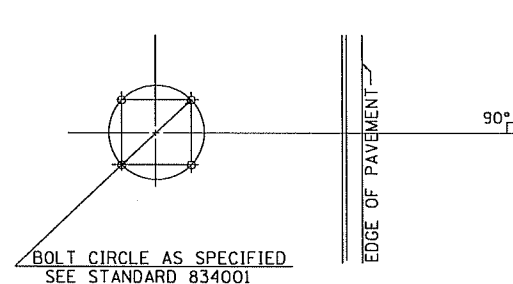
A PEDESTRIAN CLEARANCE INTERVAL OF 16 SECONDS SHALL BE USED FOR PHASE 2; 19 SECONDS FOR PHASE 4; 19 SECONDS FOR PHASE 6; 19 SECONDS FOR PHASE 8.

NOTE: THE ANTI-BACKUP FEATURE SHALL BE HARDWIRED ON THE CONTROLLER CABINET BACKPANEL.

PEDESTRIAN PUSH-BUTTON SIGNS



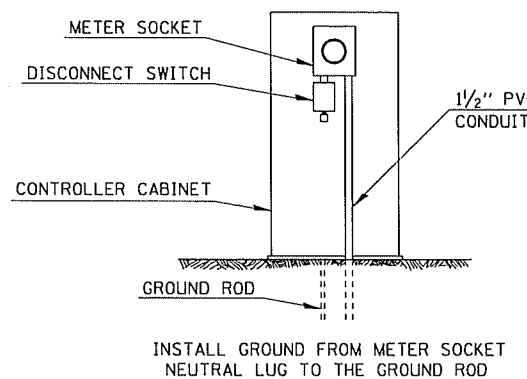
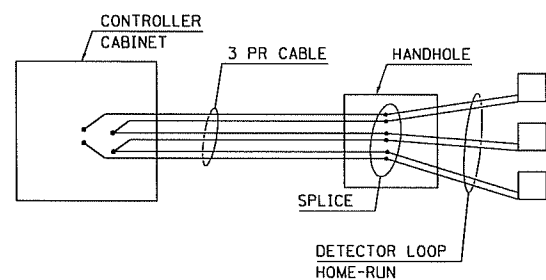
NOTE: PEDESTRIAN PUSH-BUTTON SIGNS SHALL BE MOUNTED ABOVE THE PEDESTRIAN PUSH-BUTTONS. THE SIGNS SHALL BE BOLTED TO THE POSTS. THE SIGNS SHALL BE CONSIDERED AS INCLUDED IN THE COST OF PEDESTRIAN PUSH-BUTTONS IN ACCORDANCE WITH SECTION 862 OF THE STANDARD SPECIFICATIONS.



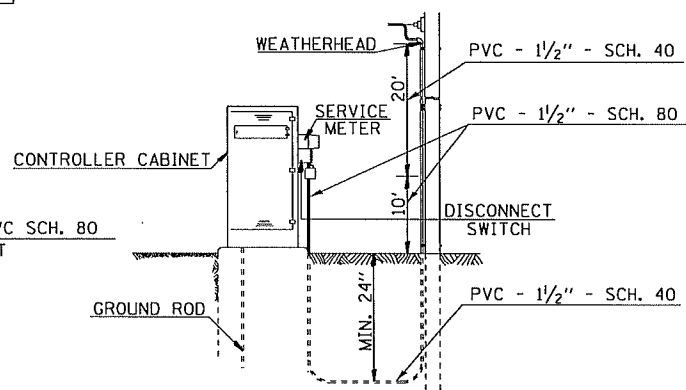
DETAIL OF MAST ARM FOUNDATION BOLT PATTERN

DETAIL OF DETECTOR LOOP WIRING

WIRED IN SERIES WITH MULTI-PAIR CABLE



INSTALL GROUND FROM METER SOCKET NEUTRAL LUG TO THE GROUND ROD



CONTRACTOR TO SUPPLY SCH. 80 - 10' AND SCH. 40 - 20' WEATHERHEAD TO BE INSTALLED ON POWER POLE BY POWER COMPANY

DETAIL OF SERVICE INSTALLATION MOUNTED ON CONTROLLER CABINET

BILL OF MATERIALS
IL. ROUTE 1 & ATTICA STREET

ITEM	UNIT	QUANTITY
SERVICE INSTALLATION, TYPE A (MODIFIED)	EACH	1
CONDUIT IN TRENCH, 1" DIA., PVC	FOOT	72
CONDUIT IN TRENCH, 2" DIA., PVC	FOOT	175
CONDUIT IN TRENCH, 5" DIA., PVC	FOOT	18
CONDUIT, AUGERED 1 1/2" DIA., PVC	FOOT	545
CONDUIT, AUGERED 3" DIA., PVC	FOOT	215
HANDHOLE	EACH	5
DOUBLE HANDHOLE	EACH	1
TRENCH AND BACKFILL FOR ELECTRICAL WORK	FOOT	265
FULL-ACTUATED CONTROLLER AND TYPE IV CABINET	EACH	1
GULFBOX JUNCTION	EACH	2
GULFBOX JUNCTION REMOVAL	EACH	2
ELECTRIC CABLE IN CONDUIT, SIGNAL NO. 14 3C	FOOT	555
ELECTRIC CABLE IN CONDUIT, SIGNAL NO. 14 4C	FOOT	932
ELECTRIC CABLE IN CONDUIT, SIGNAL NO. 14 5C	FOOT	1508
ELECTRIC CABLE IN CONDUIT, SIGNAL NO. 14 7C	FOOT	160
ELECTRIC CABLE IN CONDUIT, LEAD-IN, NO. 18 3 PAIR	FOOT	945
TRAFFIC SIGNAL POST, ALUMINUM 14 FT.	EACH	4
PEDESTRIAN PUSH-BUTTON POST, GALVANIZED STEEL, TYPE II	EACH	4
STEEL MAST ARM ASSEMBLY AND POLE, 24 FT.	EACH	1
STEEL MAST ARM ASSEMBLY AND POLE, 26 FT.	EACH	2
STEEL MAST ARM ASSEMBLY AND POLE, 30 FT.	EACH	1
CONCRETE FOUNDATION, TYPE A	FOOT	12.4
CONCRETE FOUNDATION, TYPE D	EACH	3.5
CONCRETE FOUNDATION, TYPE E 30-INCH DIAMETER	FOOT	41
TRAFFIC SIGNAL BACKPLATE	EACH	8
INDUCTIVE LOOP DETECTOR	EACH	7
DETECTOR LOOP, TYPE I	FOOT	389
PEDESTRIAN PUSH-BUTTON	EACH	8
REMOVE EXISTING TRAFFIC SIGNAL EQUIPMENT	EACH	1
REMOVE EXISTING HANDHOLE	EACH	4
REMOVE EXISTING CONCRETE FOUNDATION	EACH	8
ELECTRIC CABLE IN CONDUIT, GROUNDING, NO. 6 1C	FOOT	624
SIGNAL HEAD ,POLYCARBONATE, LED, 1-FACE, 3-SECTION, BRACKET MOUNTED	EACH	4
SIGNAL HEAD ,POLYCARBONATE, LED, 1-FACE, 3-SECTION, MAST ARM MOUNTED	EACH	8
PEDESTRIAN SIGNAL HEAD, POLYCARBONATE,LED, 1-FACE, BRACKET MOUNTED	EACH	6
PEDESTRIAN SIGNAL HEAD, POLYCARBONATE, LED, 2-FACE, BRACKET MOUNTED	EACH	1
ELECTRIC CABLE IN CONDUIT, SERVICE NO. 6 1C	EACH	609

GENERAL NOTES

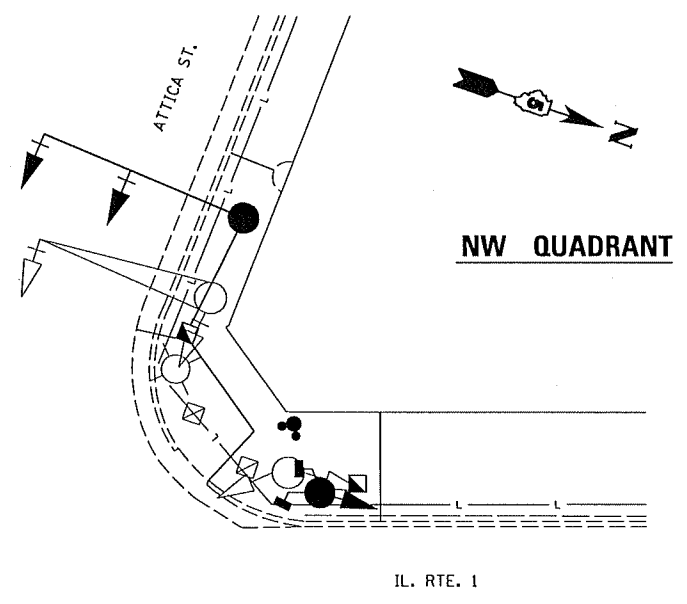
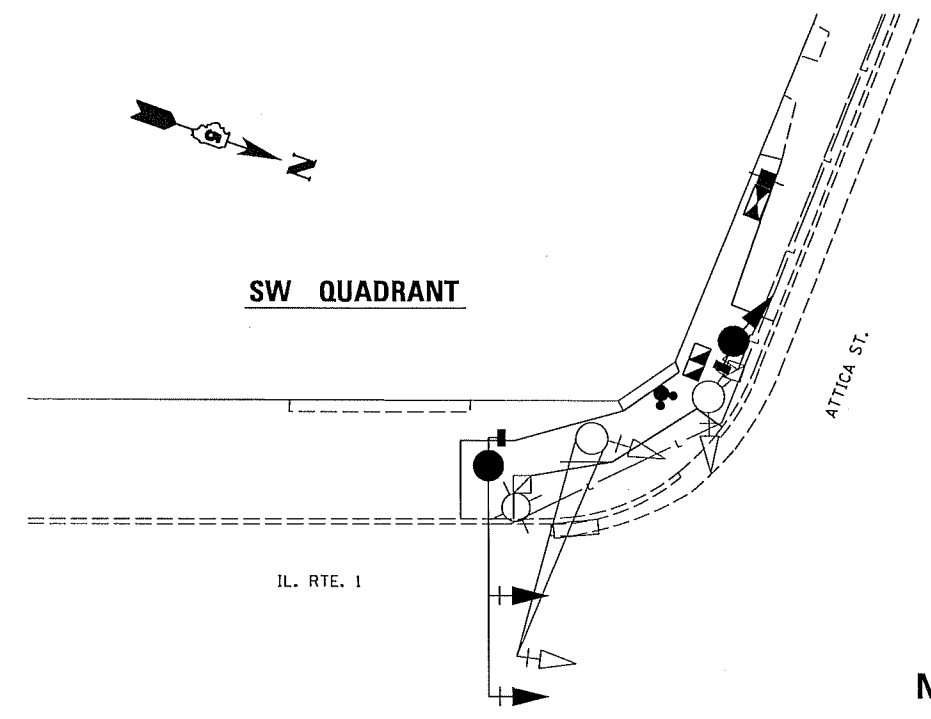
1. THE FOLLOWING SIGNAL HEADS SHALL BE WIRED IN PARALLEL AT THE MAST POLE HANDHOLE: (A2, A3), (B2, B3), (C2, C3), (D2, D3) - EACH MAST ARM MOUNTED SIGNAL HEAD SHALL HAVE ITS OWN INDIVIDUAL CABLE FROM THE MAST POLE HANDHOLE TO THE SIGNAL HEAD.
2. THE ACTUAL LOCATION OF ALL SIGNAL FOUNDATIONS, HANDHOLES, AND TRAFFIC CONTROLLER WILL BE DETERMINED IN THE FIELD BY THE ENGINEER.
3. POST MOUNTED SIGNALS SHALL BE INSTALLED SO THAT NO PART OF THE SIGNAL HEAD IS WITHIN 2 FT. OF THE FACE OF CURB.
4. ALIGN ADJACENT RED INDICATIONS TO SAME HEIGHT ABOVE PAVEMENT.
5. THE BASE FOR A TRAFFIC SIGNAL POST SHALL BE SITUATED SUCH THAT THE HANDHOLE IS LOCATED ON A SIDE AWAY FROM A TRAVELED LANE.
6. PEDESTRIAN PUSHBUTTON SIGNAL SIGNS SHALL BE MOUNTED ABOVE THE APPROPRIATE PEDESTRIAN PUSHBUTTON.
7. THE ANTI-BACKUP FEATURE SHALL BE HARDWIRED ON THE BACKPANEL OF THE CONTROLLER CABINET.
8. EACH DETECTOR LOOP SHALL BE WIRED TO INDIVIDUAL PAIRS OF THE LEAD-IN CABLE. DETECTOR LOOPS SHALL BE WIRED IN SERIES AT THE CONTROLLER CABINET DETECTOR PANEL.

ITEMS TO BE RETURNED TO IL. DEPT. OF TRANSPORTATION

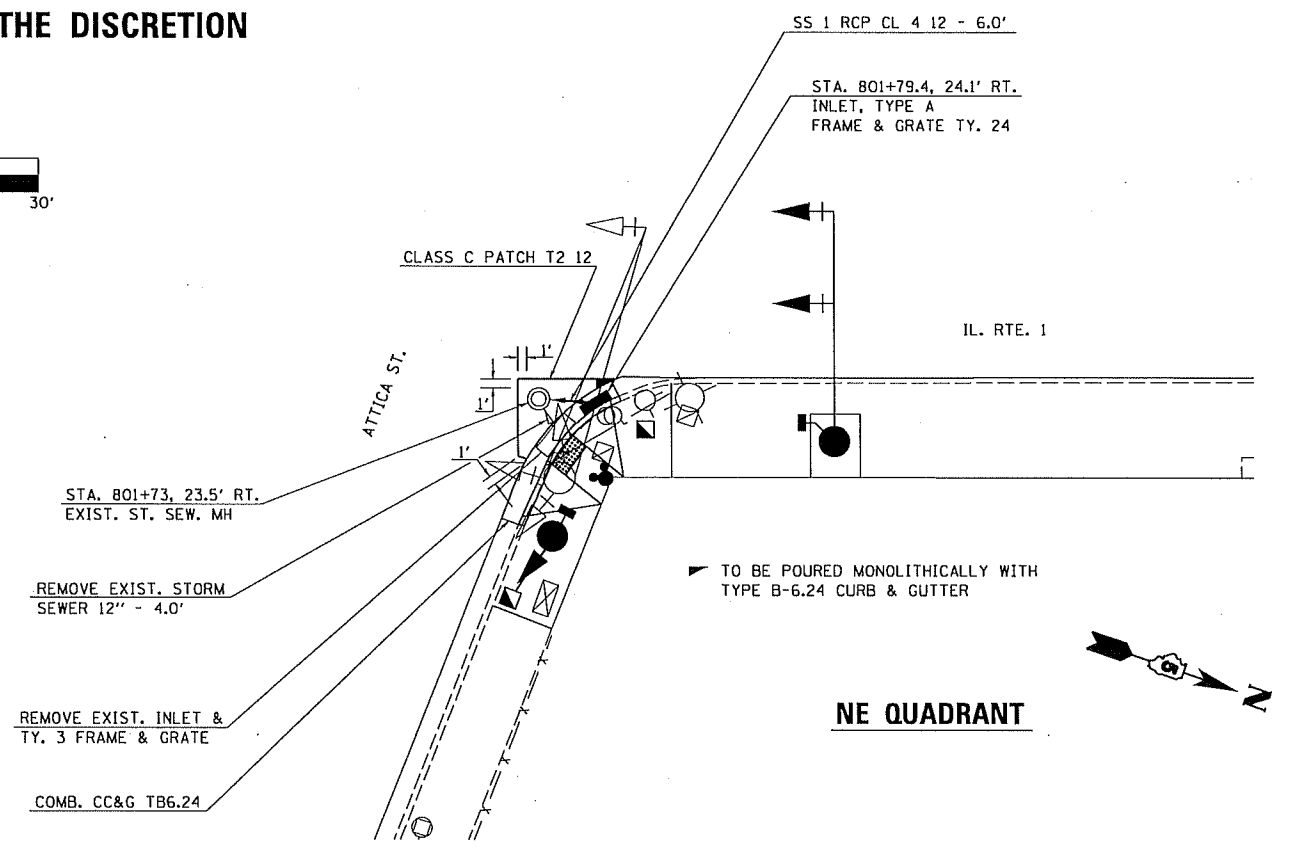
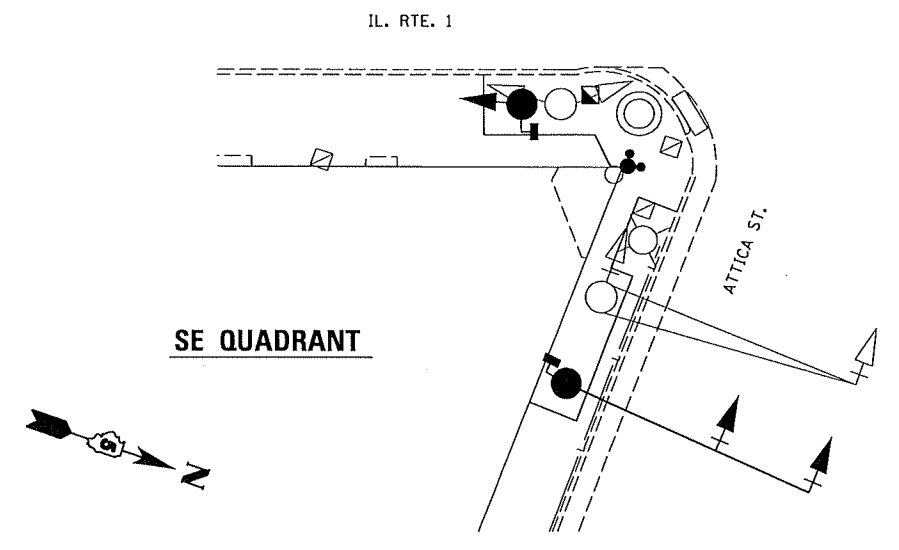
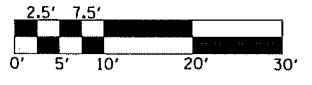
ITEM	QUANTITY
CONTROLLER	1 EACH

F.A. RTE.	SECTION	COUNTY	TOTAL SHEETS	SHEET NO.
332	(48Z-2) TS	VERMILION	7	7
STA.		TO STA.		
FED. ROAD DIST. NO.	ILLINOIS	FED. AID PROJECT		

DETAIL OF SIDEWALK SAWCUTS FOR SIDEWALK REMOVAL & REPLACEMENT



NOTE: LINES FOR SAWCUTS ARE SHOWN IN APPROXIMATE LOCATIONS AND FINAL LOCATIONS ARE PER THE DISCRETION OF THE ENGINEER.



PLOT DATE = 2/6/2006
 PLOT SCALE = 1/8" = 10'-0"
 PLOT SHEET = 48Z-2(7)
 USER NAME = craig