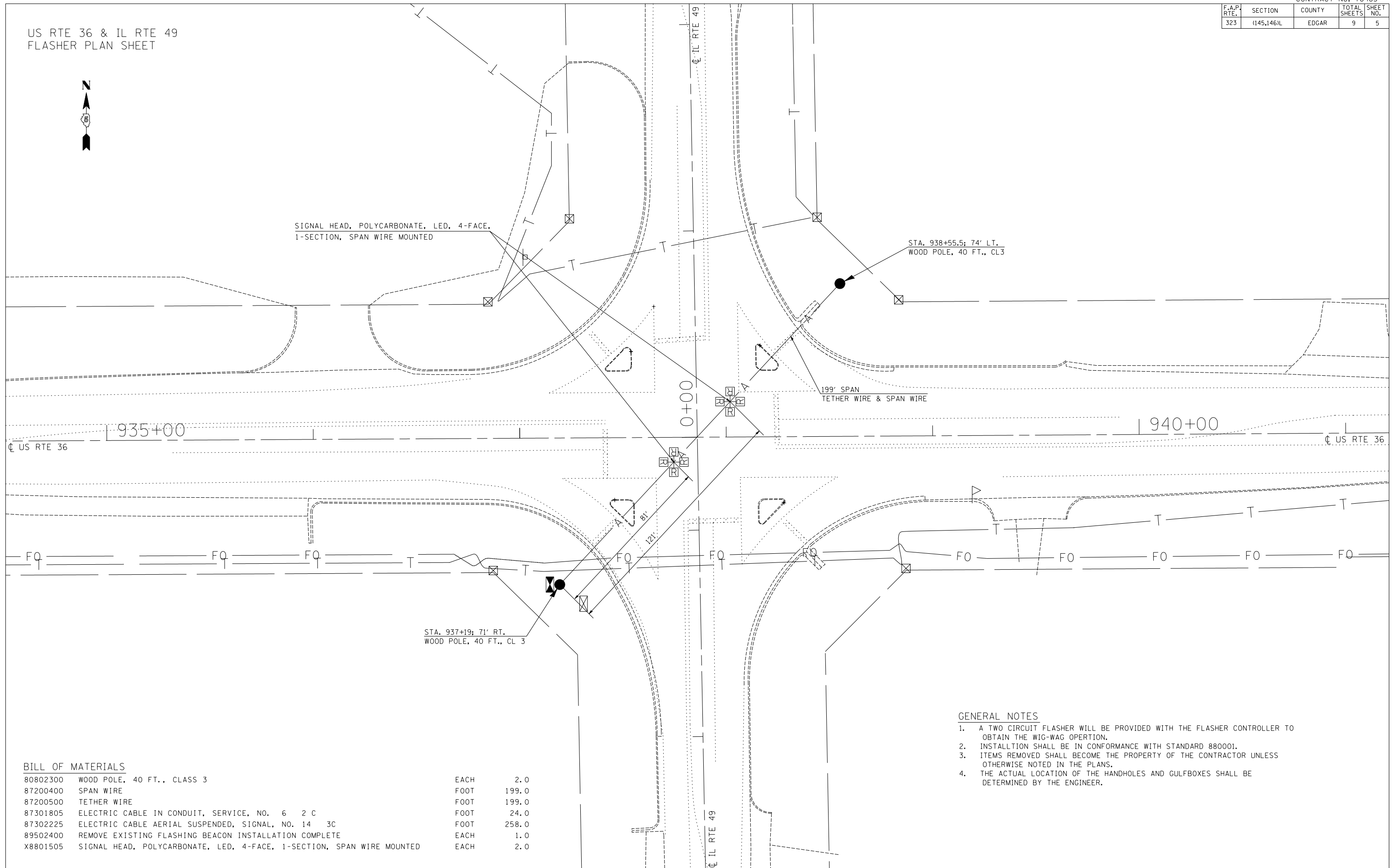


F.A.P. RTE.	SECTION	COUNTY	TOTAL SHEETS	SHEET NO.
323	(145,146)L	EDGAR	9	5

US RTE 36 & IL RTE 49
FLASHER PLAN SHEET



SIGNAL HEAD, POLYCARBONATE, LED, 4-FACE,
1-SECTION, SPAN WIRE MOUNTED

STA. 938+55.5; 74' LT.
WOOD POLE, 40 FT., CL3

199' SPAN
TETHER WIRE & SPAN WIRE

STA. 937+19; 71' RT.
WOOD POLE, 40 FT., CL 3

GENERAL NOTES

1. A TWO CIRCUIT FLASHER WILL BE PROVIDED WITH THE FLASHER CONTROLLER TO OBTAIN THE WIG-WAG OPERATION.
2. INSTALLTION SHALL BE IN CONFORMANCE WITH STANDARD 880001.
3. ITEMS REMOVED SHALL BECOME THE PROPERTY OF THE CONTRACTOR UNLESS OTHERWISE NOTED IN THE PLANS.
4. THE ACTUAL LOCATION OF THE HANDHOLES AND GULFBOXES SHALL BE DETERMINED BY THE ENGINEER.

BILL OF MATERIALS

80802300	WOOD POLE, 40 FT., CLASS 3	EACH	2.0
87200400	SPAN WIRE	FOOT	199.0
87200500	TETHER WIRE	FOOT	199.0
87301805	ELECTRIC CABLE IN CONDUIT, SERVICE, NO. 6 2 C	FOOT	24.0
87302225	ELECTRIC CABLE AERIAL SUSPENDE, SIGNAL, NO. 14 3C	FOOT	258.0
89502400	REMOVE EXISTING FLASHING BEACON INSTALLATION COMPLETE	EACH	1.0
X8801505	SIGNAL HEAD, POLYCARBONATE, LED, 4-FACE, 1-SECTION, SPAN WIRE MOUNTED	EACH	2.0