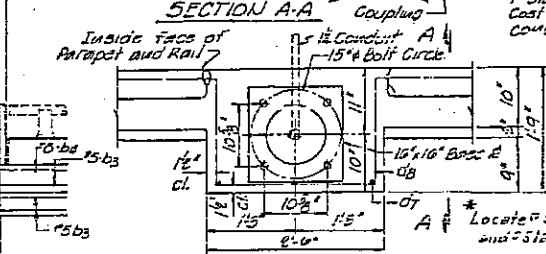
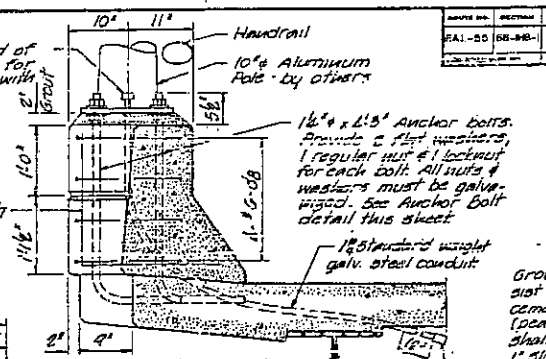
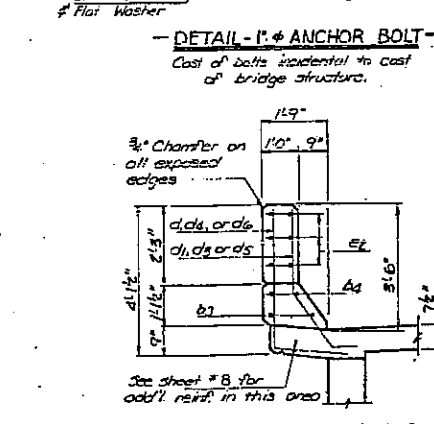
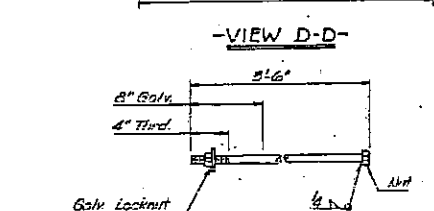
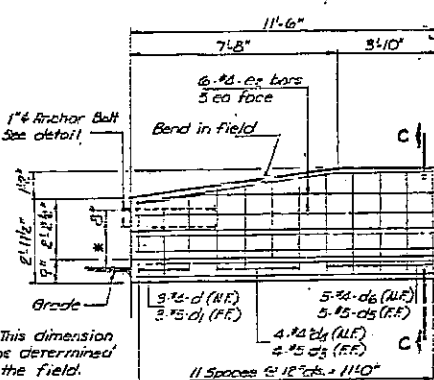
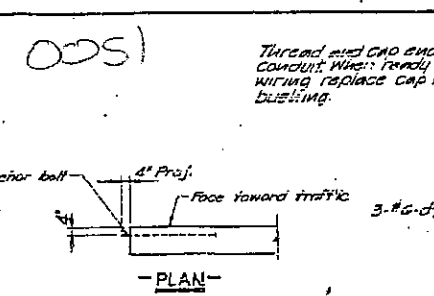
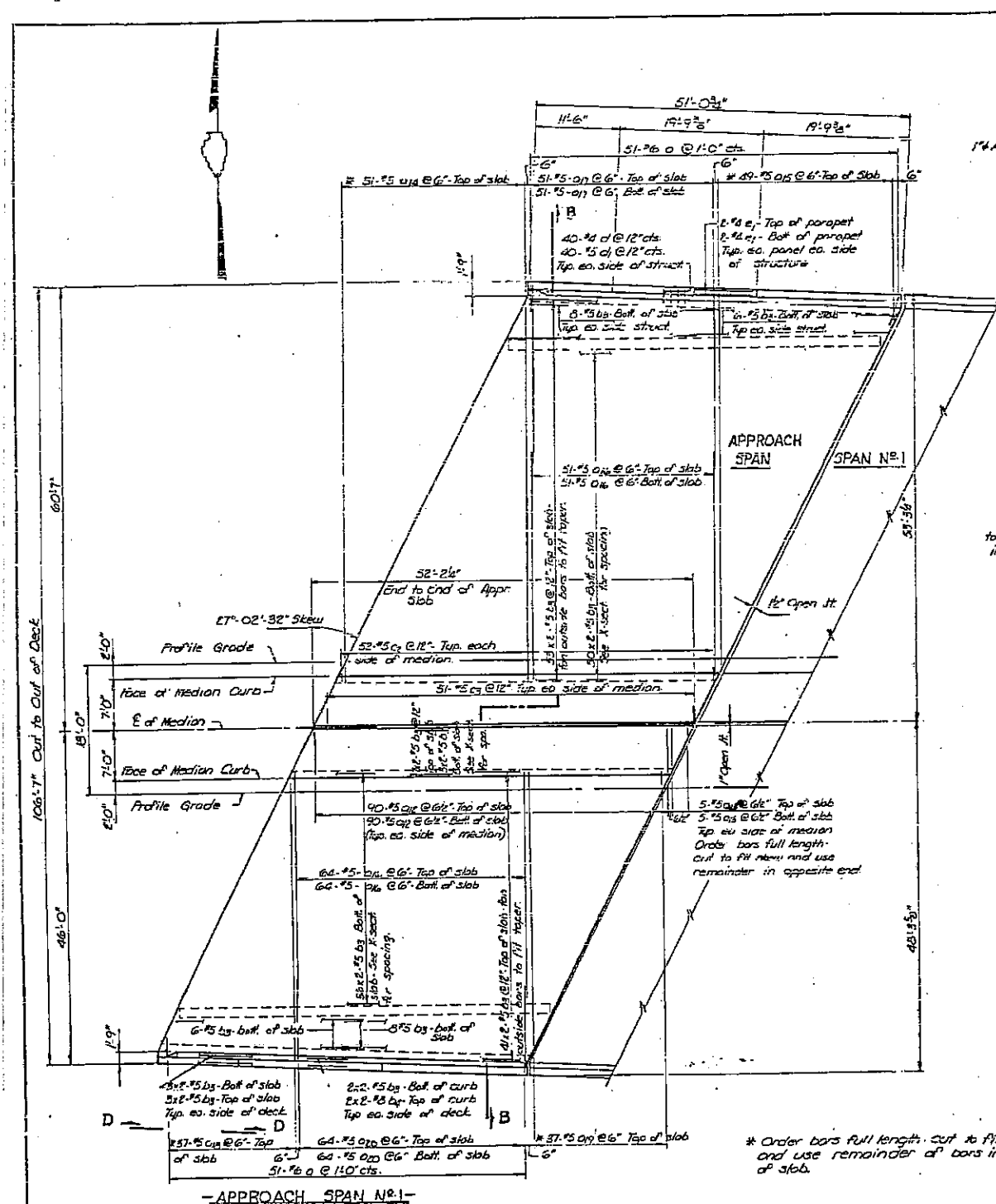


PROJECT NO.	DISTRICT	COUNTY	TOTAL SHEETS	SHEET NO.
PAI-55	68-98-	MONTGOMERY	128	51

Sheet No. 51 of 20 Sheets



NOTE
Grout mixture shall consist of 1 part sand, 1 part cement & 1 part chips (lean gravel). The grout shall contain water for 1' slump. Cost of Anchor Bolts & Conduit is incidental.

BILL OF MATERIAL (2 SPANS)

BAR	N ^o	SIZE	LENGTH	SHAPE
Q	204	#6	4'-0"	
Q1	760	#5	6'-7"	
Q1B	40	#5	7'-6"	
Q1A	102	#5	5'-16"	
Q5	48	#5	5'-0"	
Q1C	460	#5	5'-3"	
Q17	208	#5	24'-0"	
Q1B	74	#5	4'-0"	
Q18	74	#5	4'-0"-3"	
Q19	254	#5	11'-8"	
B1	408	#5	26'-1"	
B4	16	#8	26'-6"	
C1	208	#5	5'-10"	
C2	204	#5	5'-6"	
d	172	#4	4'-7"	
d1	172	#5	8'-6"	
d2	40	#4	2'-1"	
d3	16	#5	5'-11"	
d4	16	#4	5'-2"	
d5	20	#5	4'-6"	
d6	20	#4	5'-9"	
e	52	#5	15'-6"	
e1	24	#4	11'-8"	
REINFORCEMENT BARS			LBS.	73,500
CLASS X CONCRETE			CU. YDS.	408.9

REVISIONS	DATE	BY	DESCRIPTION
1	1/23/55		
2			
3			
4			
5			

STATE OF ILLINOIS
DEPT. OF PUBLIC WORKS AND BUILDINGS
DIVISION OF HIGHWAYS
ILL. RT. 16 OVER PAI-55
SAC. 68-148-1 PROJECT
STA. 180+00 (LL. 16.1) MONTGOMERY
HOMER L. CHAMBERLAIN & ASSOC.

* Order bars full length. Cut to fit slab and use remainder of bars in bottom of slab.

NOTE: See Sheet 11-B for SECTION B-B.

C-96-012-06

EXISTING BRIDGE PLANS
FOR INFORMATION ONLY
(NOT TO SCALE)