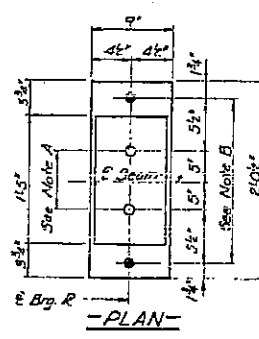
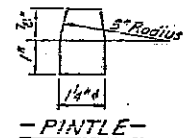
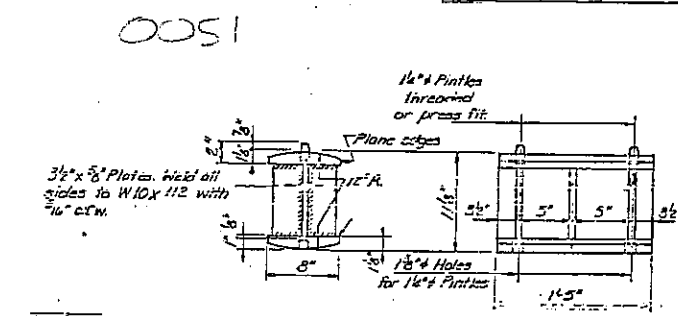
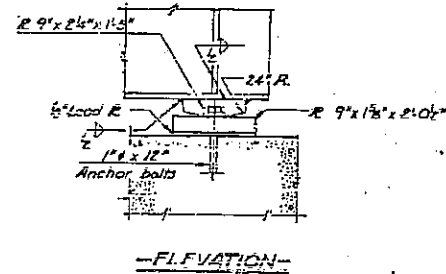
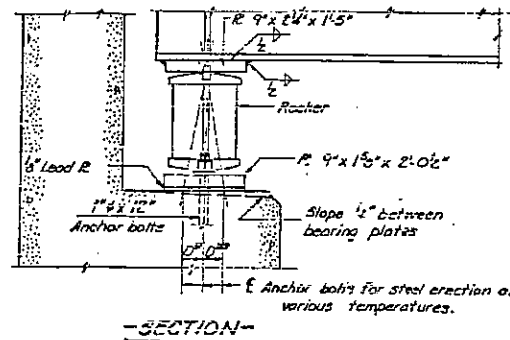


Sheet No 18
of 20 Sheets

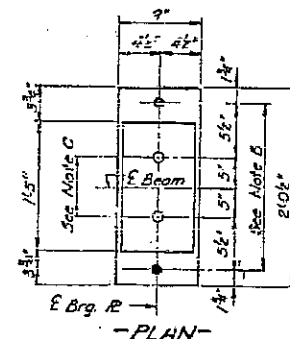
DATE	BY	CHECKED	APPROVED
FAL-55	BR-BEL	MONTGOMERY	12B
FOR SCALE SHIP USE	ILLINOIS	PROJECT	



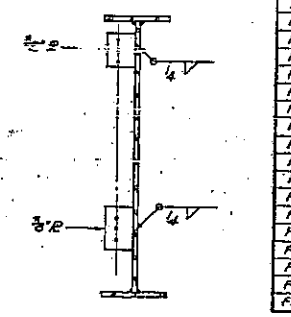
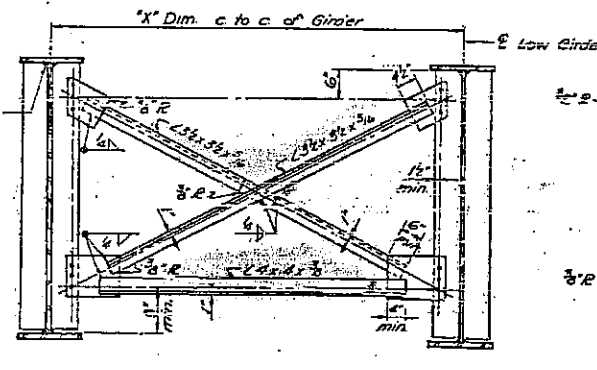
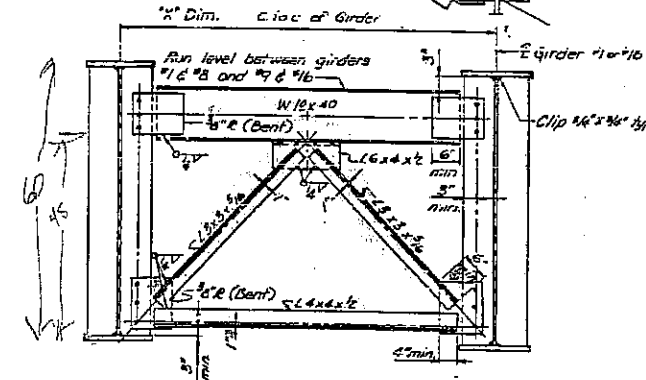
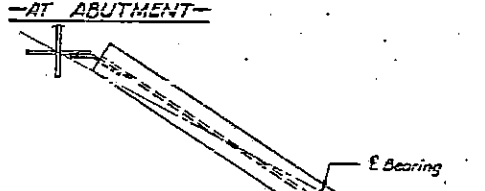
NOTE A
1 1/2" Holes - 1" deep in top flange for pintles. Thread or press fit pintles into bottom flange.

NOTE B
1/2" Holes for 1" anchor bolts 2 1/2" x 2 1/2" x 2 1/2" R Washers under nut.

Note: Bearings for all beams to be set at right angles to E of median.



NOTE C
1 1/2" Holes 1" deep in top flange only for 1 1/2" pintles



FRAME NO	REQ. DIM. X	
F1	32	61 1/2"
F2	32	50 1/2"
F3	4	50 1/2"
F4	4	45 1/2"
F5	4	60 1/2"
F6	4	9' 0"
F7	16	54' 0"
F8	64	71' 11"
F9	2	3' 7 1/2"
F10	2	3' 5"
F11	2	4' 2 1/2"
F12	2	4' 2 1/2"
F13	2	4' 7 1/2"
F14	2	4' 8 1/2"
F15	2	5' 2 1/2"
F16	2	5' 2 1/2"
F17	2	6' 0"
F18	2	6' 1 1/2"
F19	2	6' 7 1/2"
F20	2	6' 8 1/2"
F21	2	7' 0 1/2"
F22	2	7' 1 1/2"
F23	2	7' 7 1/2"
F24	2	7' 5 1/2"

NOTES ON SETTING OF ANCHOR BOLTS AT EXPANSION BEARINGS

- D^s (Side of brg away from fixed brg.)
D^s = 8" per each 100' of expansion for every 15° fall below the normal temperature of 50°F.
 - D^w (Side of brg toward fixed brg.)
D^w = 8" per each 100' of expansion for every 15° rise above the normal temperature of 50°F.
- After beams have been erected and dimensions D^s or D^w determined, holes shall be drilled and anchor bolts shall be grouted in place. All fixed anchor bolts may be built into the masonry.

REVISIONS	DATE	BY	REASON
1	1/22	MM	

STATE OF ILLINOIS
DEPT. OF PUBLIC WORKS AND BUILDINGS
DIVISION OF HIGHWAYS
ILL. RT. 16 OVER I-55 PROJECT
3RD 150' W/O (ILL. RT. 16) MONTGOMERY
HOMER L. CHASTAIN & ASSOC.
CONSULTING ENGINEERS

MLL 5-70
REVISED BY
EPL 7-20

C-96-012-06
EXISTING BRIDGE PLANS
FOR INFORMATION ONLY
(NOT TO SCALE)