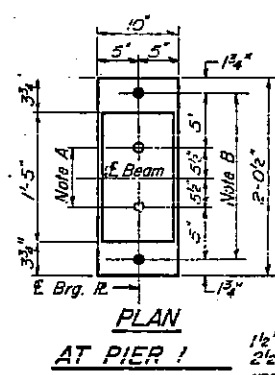
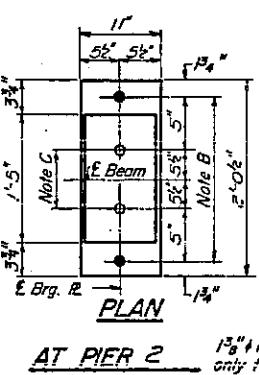


NOTE A
1 1/4" Holes - 1" deep in top R.
for pintles. Thread or press fit
pintles into bottom R.



NOTE B
1 1/4" Holes for 1" anchor bolts.
2 1/2 x 2 1/2 x 5/8" R. Washers
under nut.



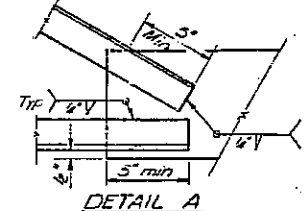
NOTE C
1 1/4" Holes 1" deep in top R.
only for 1 1/4" pintles.

NOTES ON SETTING OF ANCHOR BOLTS AT EXP. BRGS.

- a) D* (Side of brg. away from fixed brg.)
D* = 1/8" per each 100' of expansion for every 15° fall below the normal temp. of 50°F.
- D** (Side of brg. toward fixed brg.)
D** = 1/8" per each 100' of expansion for every 15° rise above the normal temp. of 50°F.

b) After beams have been erected and dimensions D* or D** determined, holes shall be drilled and anchor bolts shall be grouted in place. All fixed anchor bolts may be built into the masonry.

BEARING ASSEMBLY DETAILS



ELEVATION TOP OF WEB (for fabrication only)

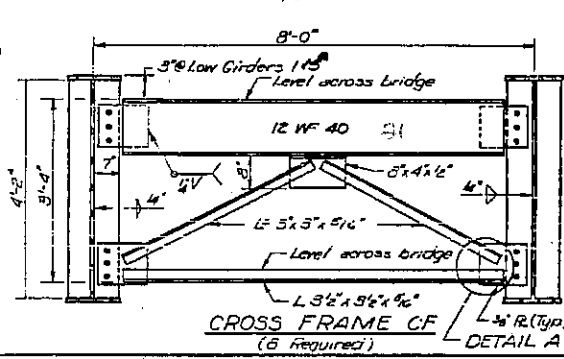
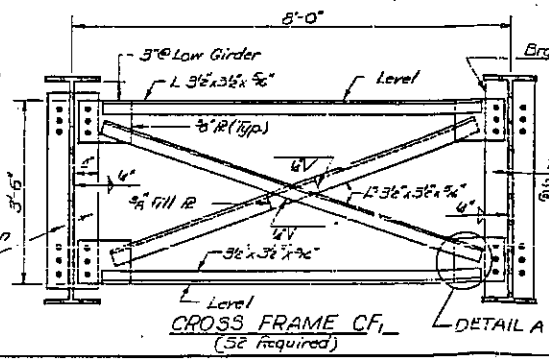
Loc. of Girder	113	244	3
E Brg. W. Abut.	618.57	618.72	618.84
E Shop S-1	618.90	619.02	619.17
E Brg. P-1	618.94	619.09	619.21
E Field S-1	619.33	619.14	619.26
F Shop S-2	619.07	619.22	619.34
E Brg. P-2	619.04	619.19	619.31
E Field S-2	619.02	619.17	619.23
E Brg. E. Abut.	618.89	619.04	619.16

Note:
See sheet # 8 for framing plan. All
butt welded joints shall be prequalified
according to AWS D2.0-66 Specifi-
cations. For details of welding designa-
tions see AWS D2.0-66 Specifi-
cations.
Weight of structural steel billed on
sheet # 7. The contact surfaces of
all field splices shall be free of all
oil & paint.
Work this sheet with sheet # 8

DESIGNED: J. H. Claff
CHECKED: J. H. Claff
DRAWN: J. M. H.
CHECKED: J. H. Claff

EXAMINED: J. H. Claff
APPROVED: J. H. Claff

4" x 3" connection
plates in
moderate frames



CROSS FRAMES &
BEARING DETAILS
FAI. RT. 55 SEC. 84-4-3HB
SANGAMON COUNTY
STA. 224+10.10

D-96-010-06
SN 084-0081
EXISTING BRIDGE PLANS
FOR INFORMATION ONLY
(NOT TO SCALE)