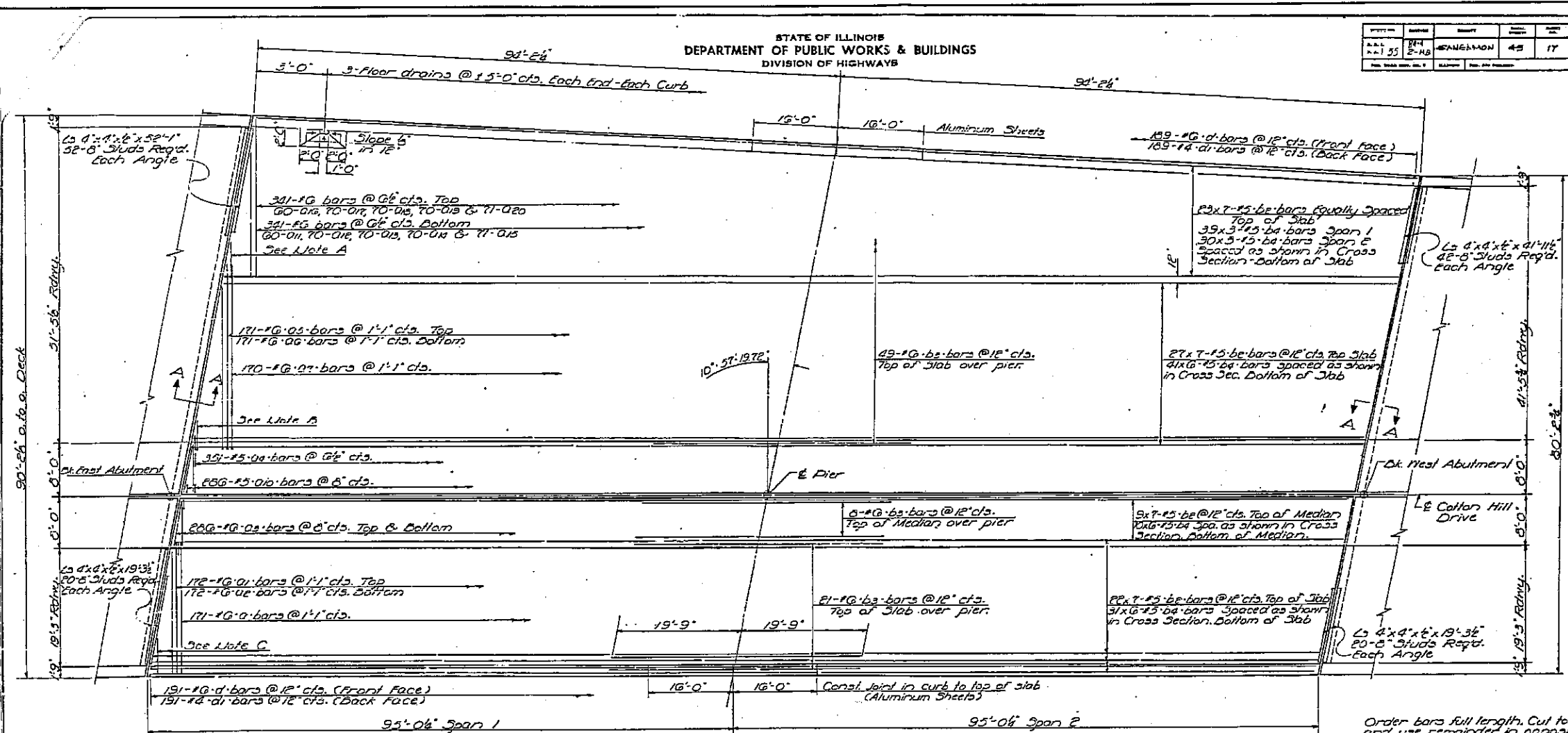


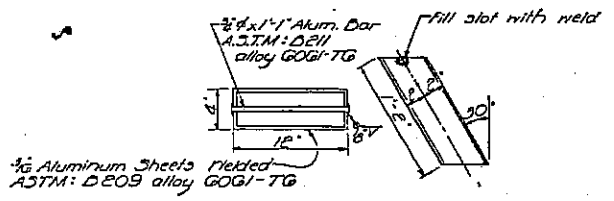
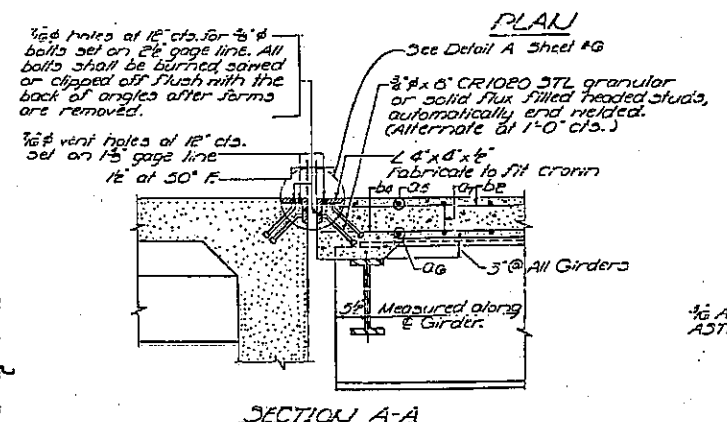
STATE OF ILLINOIS
DEPARTMENT OF PUBLIC WORKS & BUILDINGS
DIVISION OF HIGHWAYS

PROJECT NO.	DATE	BY	SCALE	SHEET NO.
104-1-15	1-15-65	WANGMANN	1/8" = 1'-0"	11
SHEET NO. 5				19 SHEETS

SHEET 11 OF 13
CONTRACT 72A28



19-3
A 1 5/8
60-8 3/4
95-0 1/2
19-0 1/2
19-0 1/2
2 5/8



Order bars full length. Cut to fit skew and use remainder in opposite end.
Note A: 10-#6 @ 12\"/>

Note B: 10-#6 @ 12\"/>

Note C: 8-#6 @ 12\"/>

Bars indicated thus 20x3-#5 etc. indicates 20 lines of bars with 3 lengths per line.

Mark this sheet with sheet #0.

DESIGNED	James M. Russ	EXAMINED	Jan 15 1965
CHECKED	J. Kaplan	PASSED	[Signature]
DRAWN	Jacobs JP	APPROVED	[Signature]
CHECKED	IK		

SUPERSTRUCTURE
I.A.I. RT. 55 SEC. 04-4-2HB
SAUGAMOU COUNTY
STA. 318 + 41.93

D-96-010-06
SN 084-0116
EXISTING BRIDGE PLANS
FOR INFORMATION ONLY
(NOT TO SCALE)