


F.A.I. RTE.	SECTION	COUNTY	TOTAL SHEETS	SHEET NO.
57		EFFINGHAM	17	2
STA.		TO STA.		
FED. ROAD DIST. NO.		ILLINOIS FED. AID PROJECT		

D-7 JOINT REPAIRS 2006-2

INDEX OF SHEETS

SHEET NO.	TITLE
1	COVER SHEET
2	GENERAL NOTES, INDEX OF SHEETS & LIST OF STANDARDS
3	SUMMARY OF QUANTITIES
4	SCHEDULE OF QUANTITIES
5	STAGE CONSTRUCTION DETAILS
6	DECK PATCHING
7-17	STRUCTURE PLANS AND DETAILS
17a.	EXISTING BORING DATA 

STANDARDS IN THE PLANS

THE FOLLOWING STANDARDS ARE A PART OF THESE PLANS AND ARE INCLUDED AFTER SHEET NO. 17:

STD. NO.	DESCRIPTION
000001-04	STANDARD SYMBOLS, ABBREVIATIONS AND PATTERNS
001001	AREAS OF REINFORCEMENT BARS
001006	DECIMAL OF AN INCH AND OF A FOOT
420401-05	BRIDGE APPROACH PAVEMENT
420701-01	PAVEMENT FABRIC
609001-02	BRIDGE APPROACH SHOULDER PAVEMENT AND DRAIN
635011-01	REFLECTOR MARKER AND MOUNTING DETAILS
701101-01	OFF-RD OPERATIONS, MULTILANE, 15' TO 24" FROM PAVEMENT EDGE
701106-01	OFF-RD OPERATIONS, MULTILANE, MORE THAN 15' AWAY
701400-02	APPROACH TO LANE CLOSURE, FREEWAY/EXPRESSWAY
701401-03	LANE CLOSURE, FREEWAY/EXPRESSWAY
701402-05	LANE CLOSURE, FREEWAY/EXPRESSWAY, WITH BARRIER
701411-03	LANE CLOSURE, MULTILANE, AT ENTRANCE OR EXIT RAMP, FOR SPEEDS >= 45 MPH
701426-02	LANE CLOSURE, MULTILANE, INTERMITTENT OR MOVING OPER., FOR SPEEDS >= 45 MPH
702001-06	TRAFFIC CONTROL DEVICES
704001-02	TEMPORARY CONCRETE BARRIERS
780001-01	TYPICAL PAVEMENT MARKINGS
781001-02	TYPICAL APPLICATIONS RAISED REFLECTIVE PAVEMENT MARKERS

GENERAL NOTES

PLAN DIMENSIONS AND DETAILS RELATIVE TO THE EXISTING STRUCTURE HAVE BEEN TAKEN FROM EXISTING PLANS AND ARE SUBJECT TO NORMAL CONSTRUCTION VARIATIONS. IT SHALL BE THE CONTRACTORS RESPONSIBILITY TO VERIFY SUCH DIMENSIONS AND DETAILS IN THE FIELD AND MAKE NECESSARY APPROVED ADJUSTMENTS PRIOR TO CONSTRUCTION OR ORDERING OF MATERIAL. SUCH VARIATIONS SHALL NOT BE CAUSE FOR ADDITIONAL COMPENSATION OR FOR A CHANGE IN THE SCOPE OF THE WORK; HOWEVER, THE CONTRACTOR WILL BE PAID FOR THE QUANTITY ACTUALLY FURNISHED AT THE UNIT PRICE FOR THE WORK.

THE GUARDRAIL LOCATED WITHIN THE LIMITS OF THE BRIDGE APPROACH SHOULDER PAVEMENT SHALL BE REMOVED AND RE-ERECTED. THE COST OF REMOVING AND RE-ERECTING THE GUARDRAIL WILL NOT BE PAID FOR SEPERATELY BUT SHALL BE INCLUDED IN THE COST OF THE BRIDGE APPROACH SHOULDER PAVEMENT.

THE TOTAL NUMBER OF TEMPORARY CONCRETE BARRIERS (STATE OWNED) REQUIRED FOR THIS PROJECT IS 33 - 10' SECTIONS. THE TEMPORARY CONCRETE BARRIERS (STATE OWNED) WHICH ARE TO BE USED ON THIS PROJECT ARE STORED AT THE EFFINGHAM MAINTENANCE YARD. STATE MAINTENANCE FORCES WILL NOT LOAD OR UNLOAD THE BARRIERS.

THE INSTALLATION OF TEMPORARY PAVEMENT MARKING AS SHOWN ON STANDARDS 701401 AND 701402 IS INCLUDED IN THE COST OF EACH RESPECTIVE TRAFFIC CONTROL PAY ITEM. THE REMOVAL OF THIS STRIPING SHALL BE PAID FOR AS WORK ZONE PAVEMENT MARKING REMOVAL.

PORTLAND CEMENT CONCRETE BASE COURSE WIDENING 8" (SQ. YD.) SHALL INCLUDE ALL EXCAVATION FOR CONSTRUCTION OF THE WIDENING. THE WIDENING SHALL REMAIN IN PLACE AT THE CONCLUSION OF THE JOB.

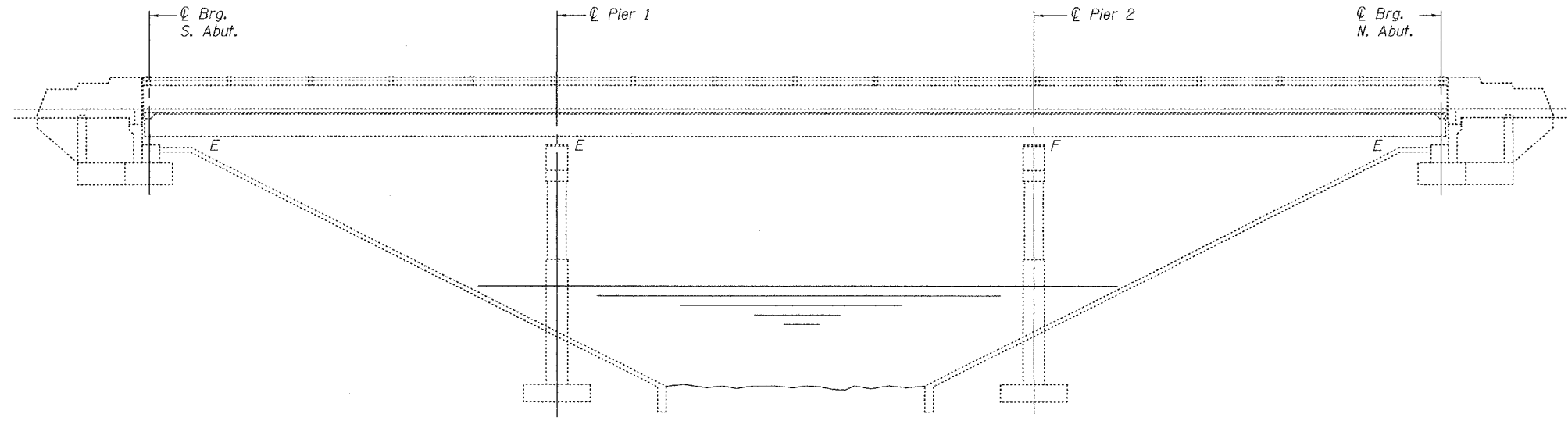
REVISIONS		ILLINOIS DEPARTMENT OF TRANSPORTATION
NAME	DATE	
		INDEX OF SHEETS STANDARDS IN THE PLANS GENERAL NOTES
SCALE:	VERT. DATE	HORIZ. CHECKED BY

B.M.: Railroad spike West side of base 8" Poplar Tree
200'-0" Right Station 5532+00 El. 578.56

STATE OF ILLINOIS
DEPARTMENT OF TRANSPORTATION

ROUTE NO.	SECTION	COUNTY	SHEETS	SHEET NO.	SHEET NO. 1 11 SHEETS
		Effingham	17	7	
FED. ROAD DIST. NO. 7		ILLINOIS	FED. AID PROJECT-		

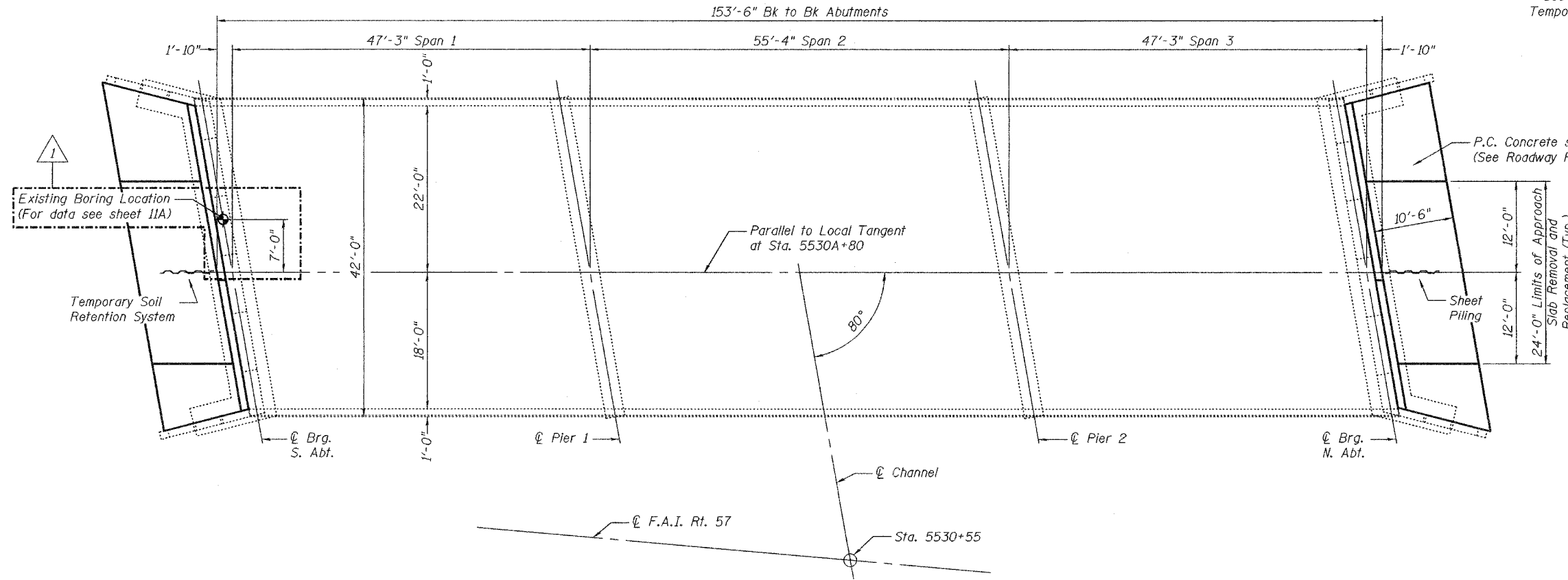
Contract Number: 74119



ELEVATION

GENERAL NOTES

All structural steel shall conform to AASHTO Classification M-270 Gr. 36, unless otherwise noted.
Fasteners shall be high strength bolts. Bolts $\frac{3}{4}$ " ϕ , open holes $\frac{13}{16}$ " ϕ , unless otherwise noted.
Plan dimensions and details relative to existing structure have been taken from existing plans and are subject to nominal construction variations. It shall be the Contractor's responsibility to verify such dimensions and details in the field and make necessary approved adjustments prior to construction or ordering of materials. Such variations shall not be cause for additional compensation for a change in the scope of the work, however, the Contractor will be paid for the quantity actually furnished at the unit price bid for the work.
The existing structural steel coating contains lead. The Contractor should take appropriate precautions to deal with the presence of lead on this project.
Existing structural steel that will be in contact with new structural steel shall be cleaned and painted prior to erection as required by the Special Provision "Cleaning and Painting Contact Surface Areas of Existing Steel Structures".
All structural steel shall be shop painted with the inorganic zinc rich primer per AASHTO M300, Type 1. Cost included with Furnishing and Erecting Structural Steel.
All construction joints shall be bonded.
See Roadway plans for quantity of Approach Slab Removal and Replacement, Temporary Concrete Barrier and P.C. Concrete Shoulder.



PLAN

TOTAL BILL OF MATERIAL

ITEM	UNIT	QUANTITY
Porous Granular Embankment (Special)	Cu. Yd.	79
Structure Excavation	Cu. Yd.	79
Reinforcement Bars, Epoxy Coated	Pound	1,820
Concrete Removal	Cu. Yd.	16.1
Concrete Structures	Cu. Yd.	16.5
Elastomeric Bearing Assembly Type I	Each	6
Elastomeric Bearing Assembly Type II	Each	6
Furnishing and Erecting Structural Steel	Pound	2,080
Temporary Sheet Piling	Sq. Ft.	88
Protective Coat	Sq. Yd.	672
Polymer Concrete	Cu. Ft.	7.4
Silicone Joint Sealer, 1 $\frac{3}{4}$ "	Foot	43
Silicone Joint Sealer, 2 $\frac{3}{4}$ "	Foot	43
Jack and Remove Existing Bearings	Each	12
Bar Splicers	Each	108
Bridge Deck Microsilica Concrete Overlay, 2 $\frac{1}{4}$ "	Sq. Yd.	672
Bridge Deck Hydro-Scarification, $\frac{1}{2}$ "	Sq. Yd.	672
Bituminous Concrete Removal (Deck)	Sq. Yd.	672
Temporary Soil Retention System	Sq. Ft.	31.8
Bridge Deck Grooving	Sq. Yd.	671.5
Pipe Underdrains for Structures	Foot	94
Deck Slab Repair (Full Depth Type I)	Sq. Yd.	1
Deck Slab Repair (Full Depth Type II)	Sq. Yd.	66

DESIGNED *Adrian T. Holloway*
 CHECKED *Paul J. Dutton*
 DRAWN *Drew Christopher*
 CHECKED *A. T. H. / S. J. B.*

EXAMINED *John A. Monie*
 ENGINEER OF STRUCTURAL SERVICES

PASSED *Robert E. Anderson*
 ENGINEER OF BRIDGES AND STRUCTURES

March 6, 2006



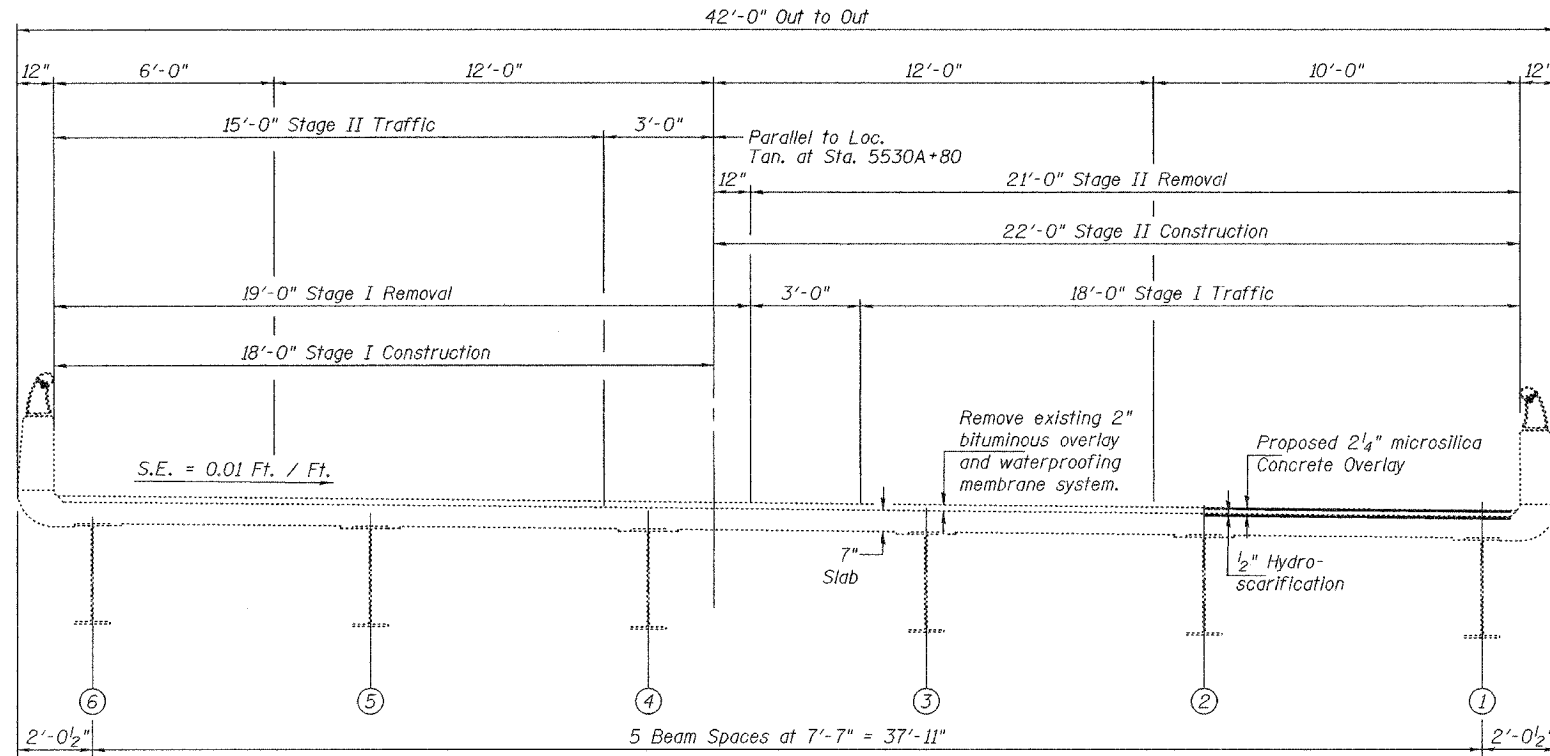
Expires: November 30, 2006

PLAN AND ELEVATION
 F.A.I. RT. 57 SOUTH BOUND
 OVER GREEN CREEK
 EFFINGHAM COUNTY
 SN 025-0004

STATE OF ILLINOIS
DEPARTMENT OF TRANSPORTATION

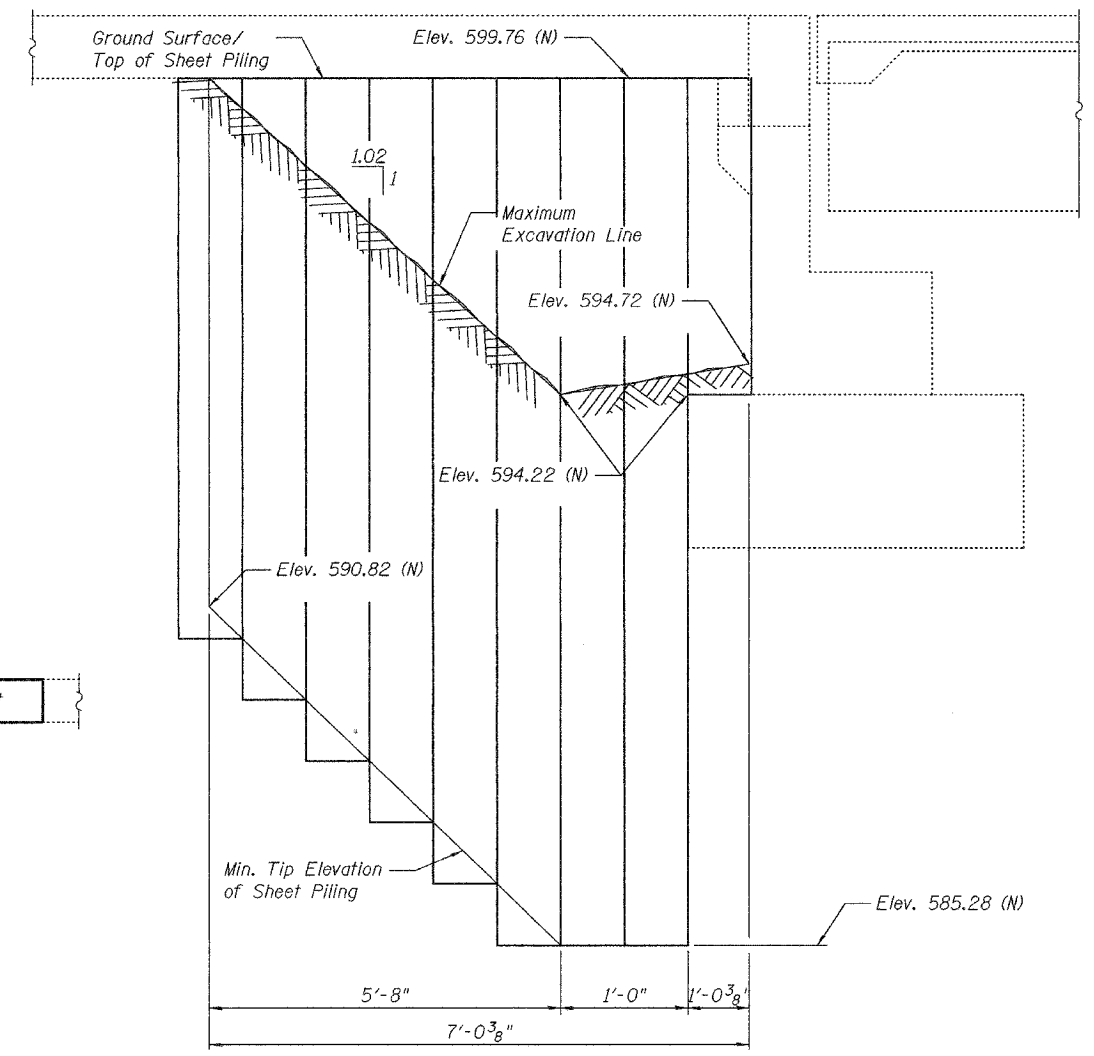
ROUTE NO.	SECTION	COUNTY	TOTAL SHEETS	SHEET NO.	SHEET NO. 2
		Effingham	17	8	11 SHEETS
FED. ROAD DIST. NO. 7	ILLINOIS	FED. AID PROJECT			

Contract Number: 74119

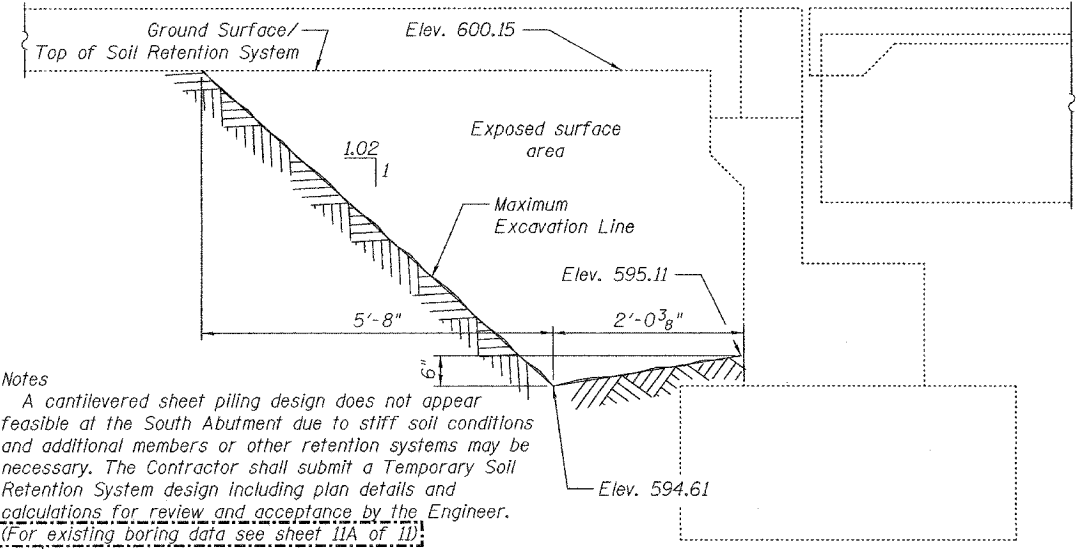


CONSTRUCTION STAGING
(Looking South)

Notes:
Minimum Section Modulus = $3.3 \text{ in.}^3/\text{ft.}$
The Contractor shall connect the first sheet to the existing North abutment wall to ensure stability of sheets driven to the top of the existing footing. This connection shall be reviewed and accepted by the Engineer and included in the cost for Temporary Sheet Piling.
If the Contractor chooses to alter the temporary cantilivered sheet piling design requirements shown on the plans for the North Abutment, a design submittal including plan details and calculations will be required for review and acceptance by the Engineer.

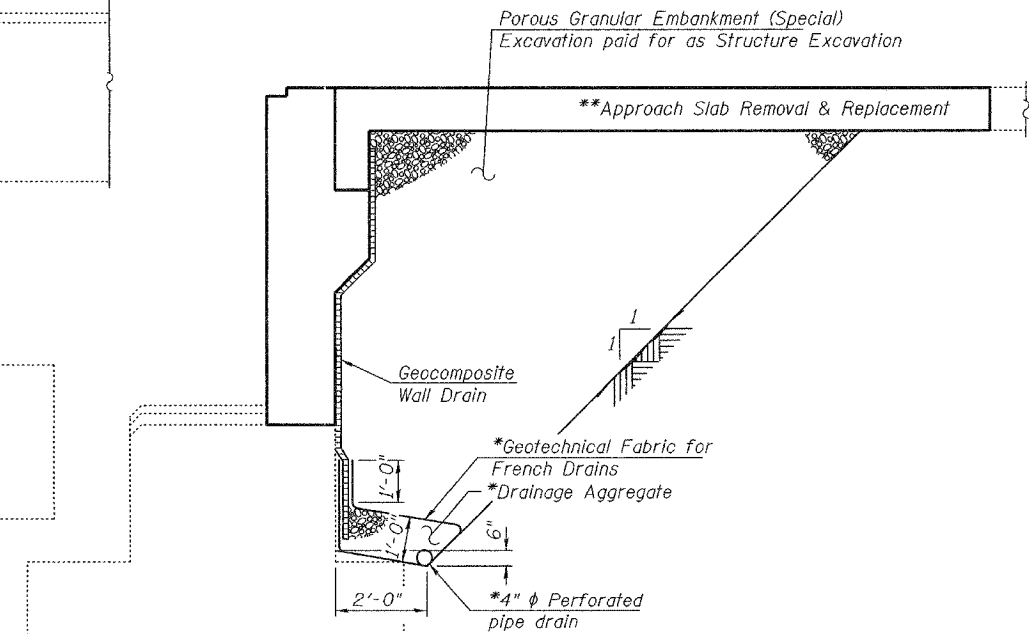


TEMPORARY SHEET PILING AT NORTH ABUTMENT
Slopes and dimensions shown along sheeting alignment.



Notes
A cantilivered sheet piling design does not appear feasible at the South Abutment due to stiff soil conditions and additional members or other retention systems may be necessary. The Contractor shall submit a Temporary Soil Retention System design including plan details and calculations for review and acceptance by the Engineer.
(For existing boring data see sheet 11A of 11)

TEMPORARY SOIL RETENTION SYSTEM AT SOUTH ABUTMENT
Slopes and distances shown along sheeting alignment



SECTION THRU ABUTMENT
Dimensions are at Right Angles

*Included in the cost of Pipe Underdrains for Structures.
**For details see Roadway Plans

All drainage system components shall extend 2'-0" from the end of each wingwall except an outlet pipe shall extend until intersecting with the side slopes. The pipes shall drain into concrete headwalls. (See Article 601.05 of the Standard Specifications and Highway Standard 601101). Bore holes through wingwalls as required and seal gap around pipe. Cost included with Pipe Underdrains for Structures.

DESIGNED	A.T.H.
CHECKED	S.J.B.
DRAWN	Drew Christopher
CHECKED	A.T.H. S.J.B.

March 6, 2006
EXAMINED *John A. Morris*
ENGINEER OF STRUCTURAL SERVICES
PASSED *Ralph E. Anderson*
ENGINEER OF BRIDGES AND STRUCTURES

STAGING DETAILS
F.A.I. RT. 57 SOUTH BOUND
OVER GREEN CREEK
EFFINGHAM COUNTY
SN 025-0004

