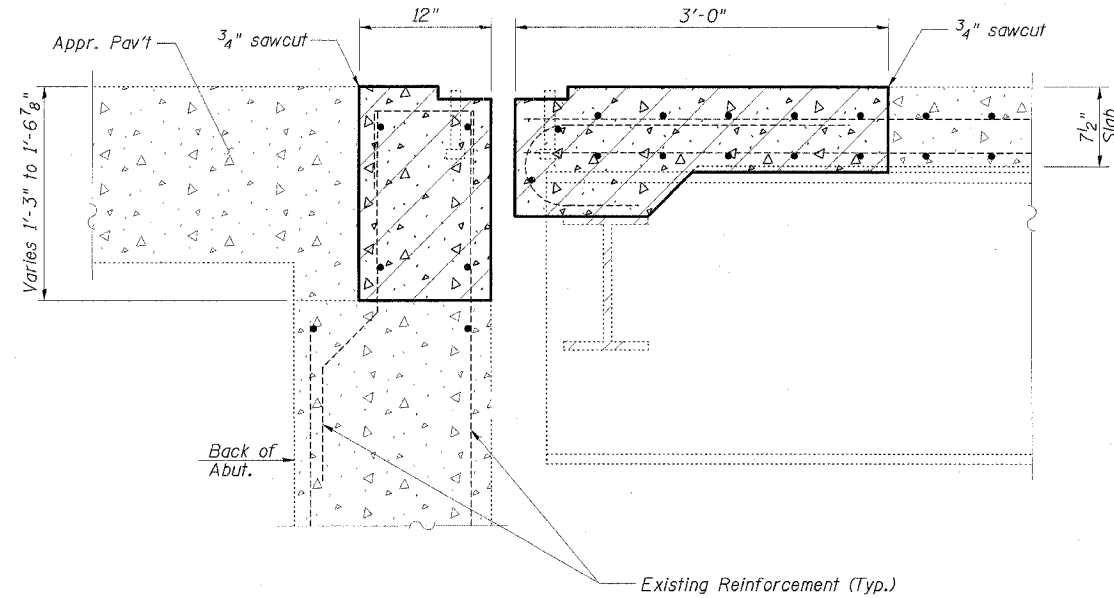


STATE OF ILLINOIS
DEPARTMENT OF TRANSPORTATION

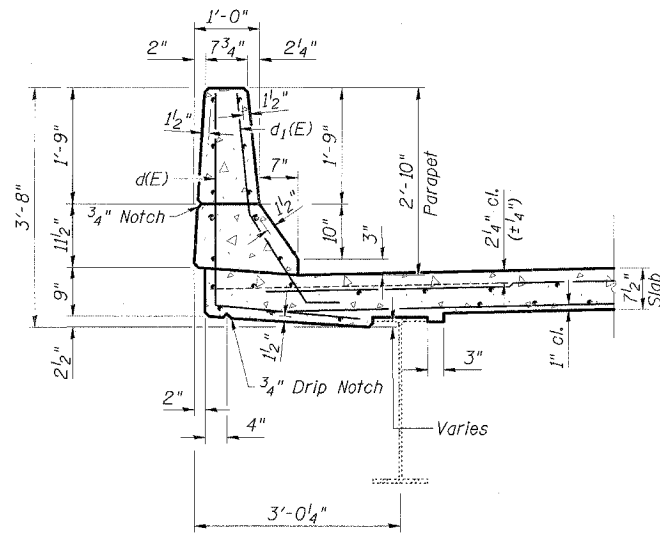
*D-7 JOINT REPAIRS 2006-3

ROUTE NO.	SECTION	COUNTY	TOTAL SHEETS	SHEET NO.
FAP 116	*	RICHLAND	31	9
STA.	TO STA.			
FED. ROAD DIST. NO.	ILLINOIS	FED. AID PROJECT		
DWG. NO. 4 OF 6				

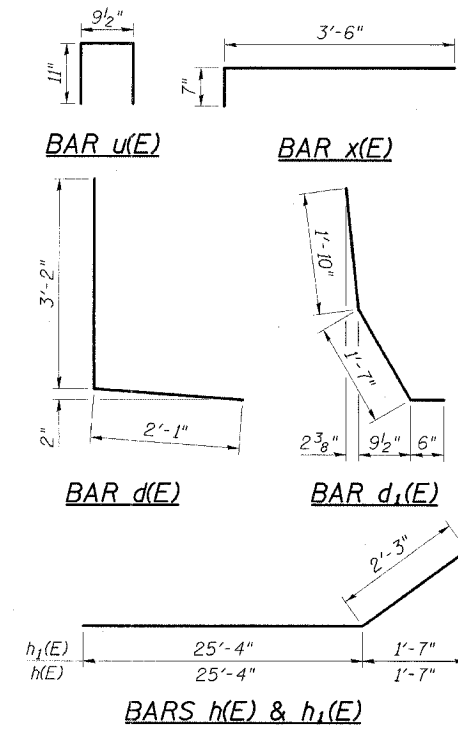
CONTRACT NO. 74120



SECTION A-A



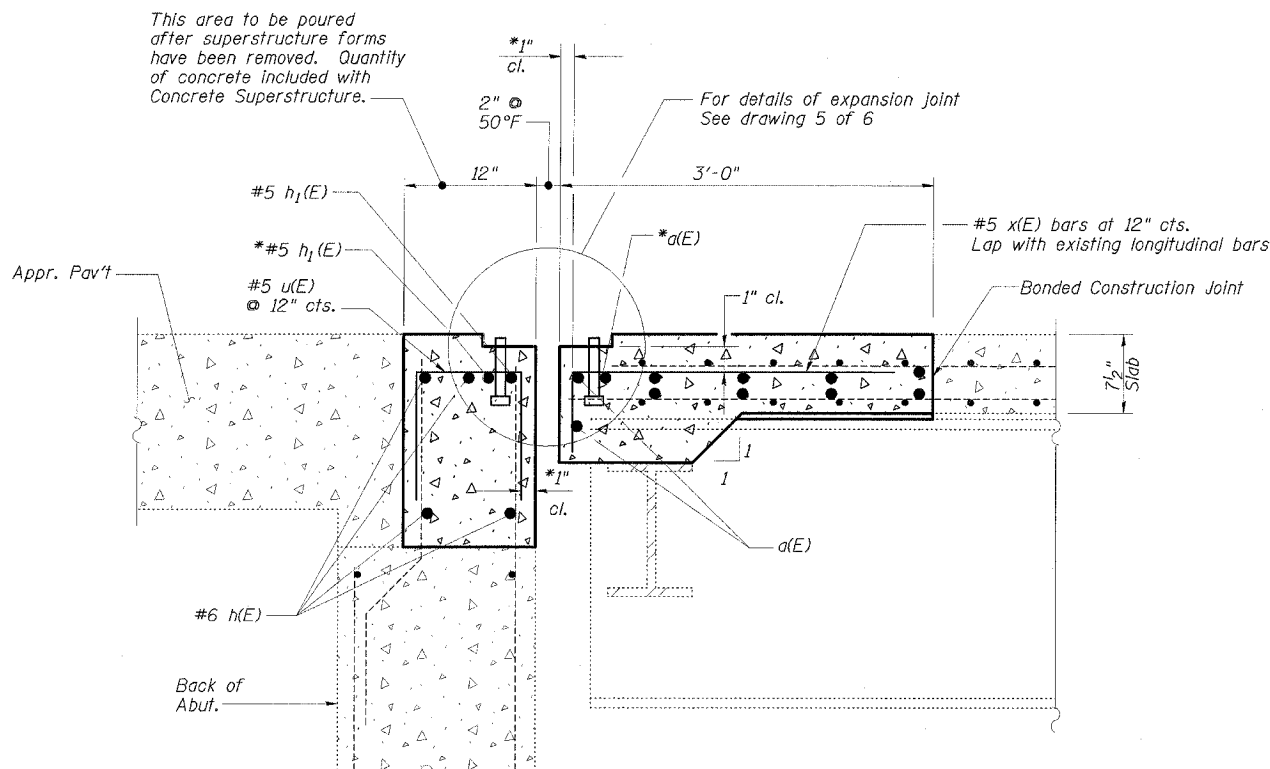
SECTION THRU PARAPET



BILL OF MATERIAL

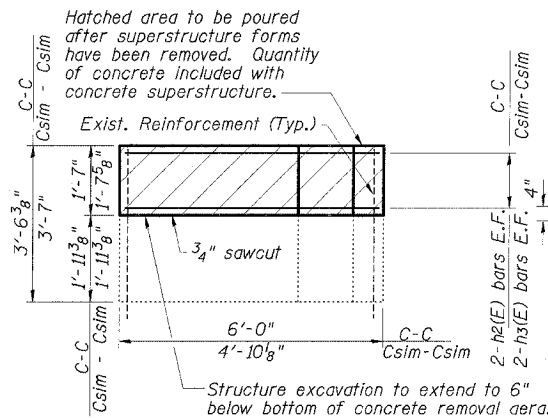
Bar	No.	Size	Length	Shape
a(E)	40	#5	25'-4"	—
d(E)	16	#4	5'-3"	L
d1(E)	20	#5	3'-11"	L
h(E)	16	#6	27'-7"	—
h1(E)	4	#5	27'-7"	—
h2(E)	8	#4	5'-2"	—
h3(E)	8	#4	3'-0"	—
u(E)	100	#5	2'-7 1/2"	U
v(E)	16	#4	3'-0"	—
x(E)	72	#5	4'-1"	L
Structure Excavation			Cu. Yds.	5
Reinforcement Bars, Epoxy Coated			Pound	2635
Concrete Superstructure			Cu. Yds.	20.3

Reinforcement bars designated (E) shall be epoxy coated.

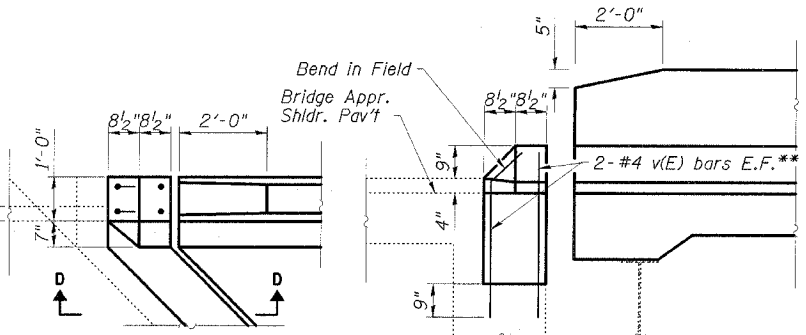


SECTION B-B

* Place a(E) and h1(E) bars in back of anchor bolt as shown if required to maintain 1" cl. (+0-1/8"). Anchor bolts should be tied to a(E) and h1(E) bars.



VIEW C-C



PLAN

SECTION D-D

CURB/PARAPET END DETAIL

** Drill and epoxy grout into existing concrete

EXPANSION JOINT REPLACEMENT DETAILS

IL 130 OVER EAST FORK CREEK

FAP RTE 116 (IL 130)

D-7 JOINT REPAIRS 2006-3

RICHLAND COUNTY

STATION 897+00.00

STRUCTURE NO. 080-0009

ESCA
CONSULTANTS, INC.

DESIGNED BY:	MTD	11/05
DRAWN BY:	CJG	1/06
CHECKED BY:	MTD	11/05
APPROVED BY:	RDP	1/06