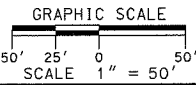
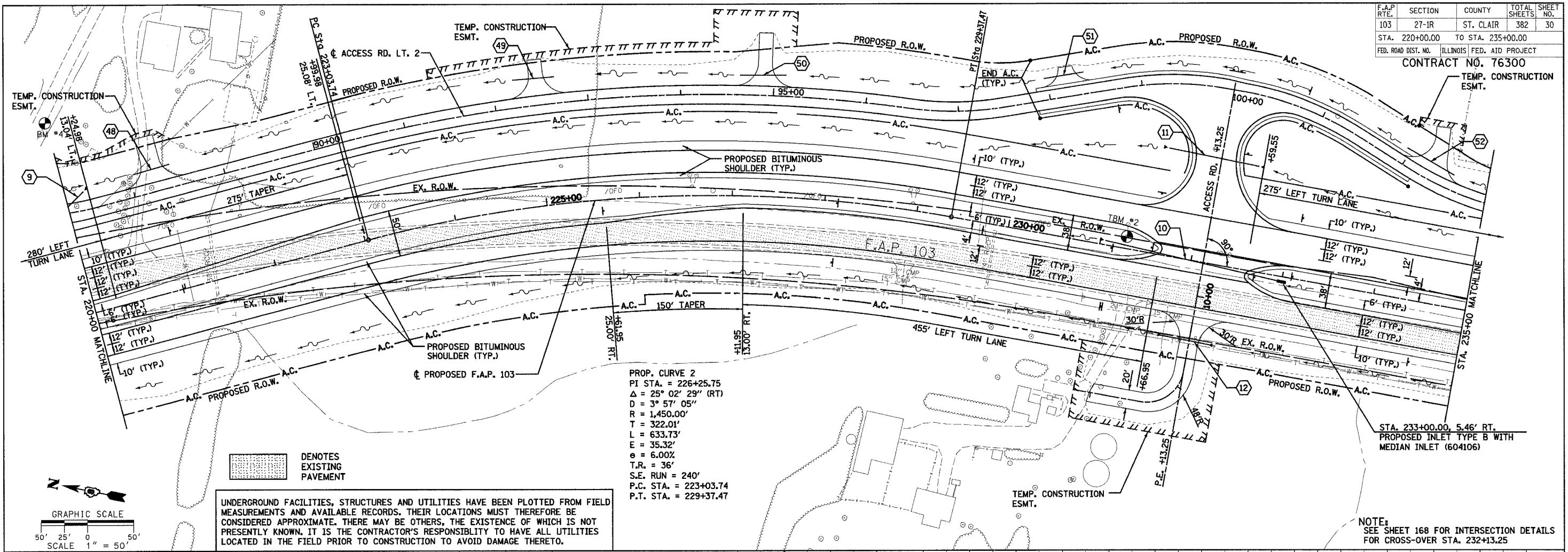


F.A.P. RTE.	SECTION	COUNTY	TOTAL SHEETS	SHEET NO.
103	27-1R	ST. CLAIR	382	30
STA. 220+00.00		TO STA. 235+00.00		
FED. ROAD DIST. NO. ILLINOIS FED. AID PROJECT				

CONTRACT NO. 76300



DENOTES EXISTING PAVEMENT

NOTE: SEE SHEET 168 FOR INTERSECTION DETAILS FOR CROSS-OVER STA. 232+13.25

