

UNDERGROUND FACILITIES, STRUCTURES AND UTILITIES HAVE BEEN PLOTTED FROM FIELD MEASUREMENTS AND AVAILABLE RECORDS. THEIR LOCATIONS MUST THEREFORE BE CONSIDERED APPROXIMATE. THERE MAY BE OTHERS. THE EXISTENCE OF WHICH IS NOT PRESENTLY KNOWN. IT IS THE CONTRACTOR'S RESPONSIBILITY TO HAVE ALL UTILITIES LOCATED IN THE FIELD PRIOR TO CONSTRUCTION TO AVOID DAMAGE THERETO.

PROP. CURVE P_AR.L2-4
 PI STA. = 100+78.48
 $\Delta = 22^\circ 13' 49''$ (RT)
 $D = 17^\circ 21' 44''$
 $R = 330.00'$
 $T = 64.83'$
 $L = 128.04'$
 $E = 6.31'$
 $\theta = 3.94\%$
 $T.R. = 28'$
 $S.E. RUN = 72'$
 $P.C. STA. = 100+13.64$
 $P.T. STA. = 101+41.68$

PROP. CURVE P_AR.L2-5
 PI STA. = 102+72.45
 $\Delta = 22^\circ 13' 49''$ (LT)
 $D = 17^\circ 21' 44''$
 $R = 330.00'$
 $T = 64.83'$
 $L = 128.04'$
 $E = 6.31'$
 $\theta = 3.94\%$
 $T.R. = 28'$
 $S.E. RUN = 72'$
 $P.C. STA. = 102+07.61$
 $P.T. STA. = 103+35.65$

F.A.P. RTE.	SECTION	COUNTY	TOTAL SHEETS	SHEET NO.
103	27-1R	ST. CLAIR	382	50
STA. 101+00.00 TO STA. 116+55.00				
FED. ROAD DIST. NO. ILLINOIS FED. AID PROJECT				
CONTRACT NO. 76300				

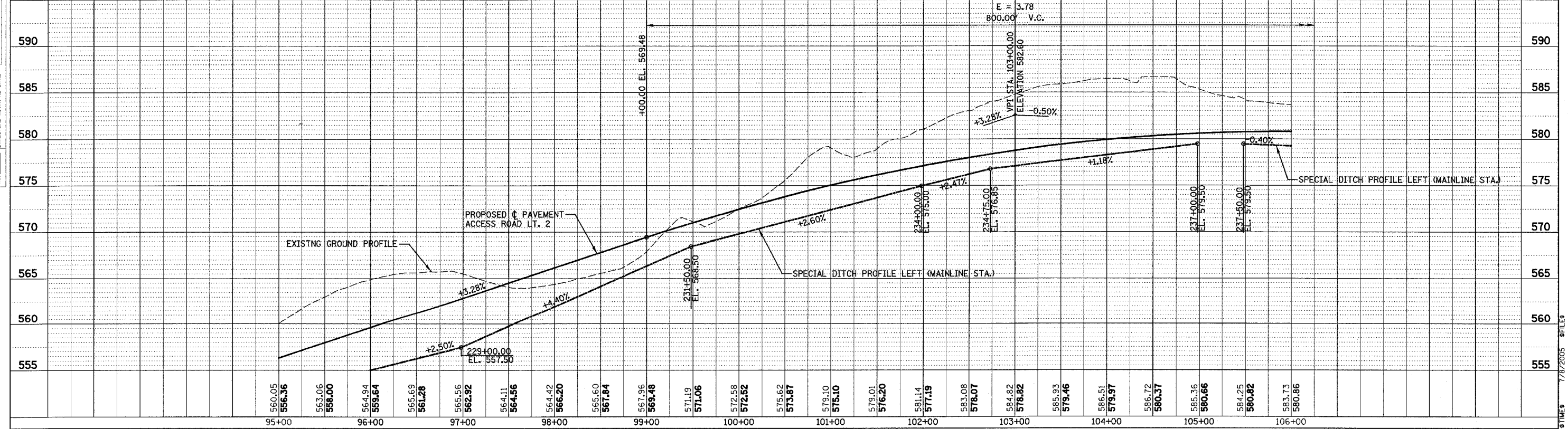
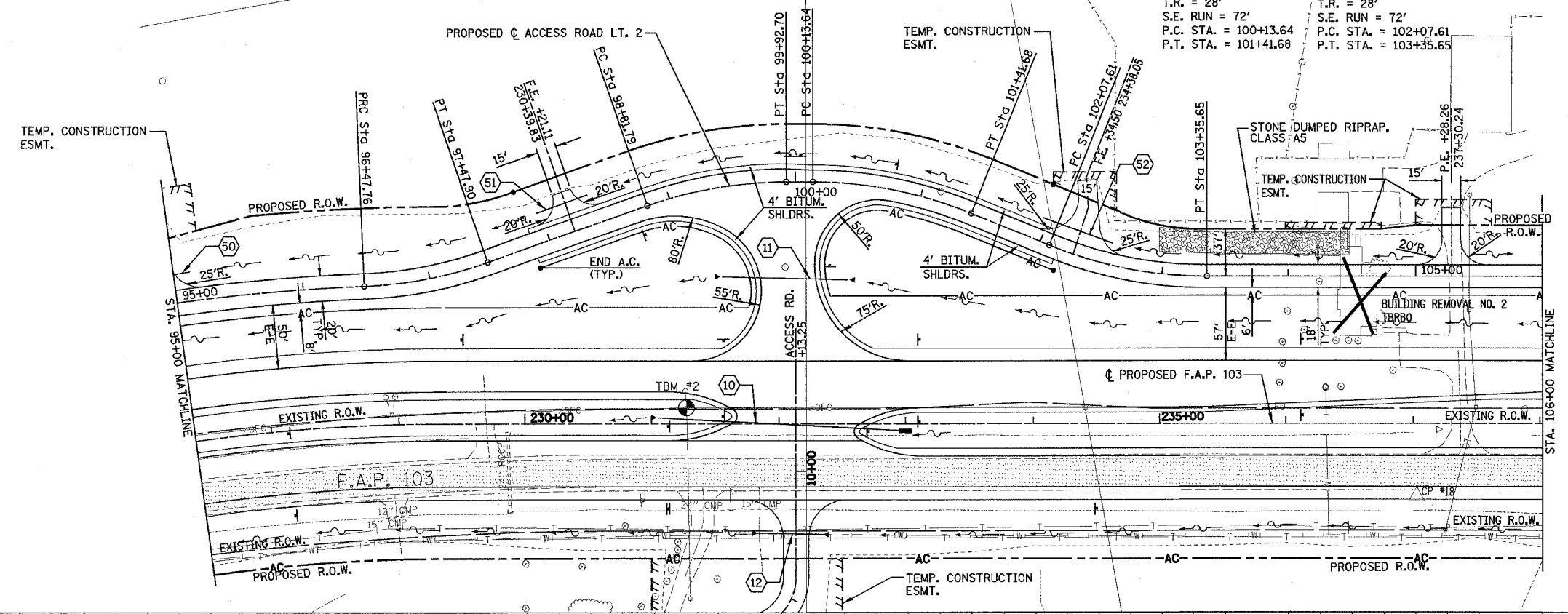
DENOTES
 EXISTING
 PAVEMENT

PLAN

DESIGNED BY	DATE
PLOTTED BY	
CHECKED BY	
NOTE BOOK NO.	
ADD FILE NAME	

PROFILE

DESIGNED BY	DATE
PLOTTED BY	
CHECKED BY	
NOTE BOOK NO.	
ADD FILE NAME	



PLAN & PROFILE - ACCESS ROAD LT. 2