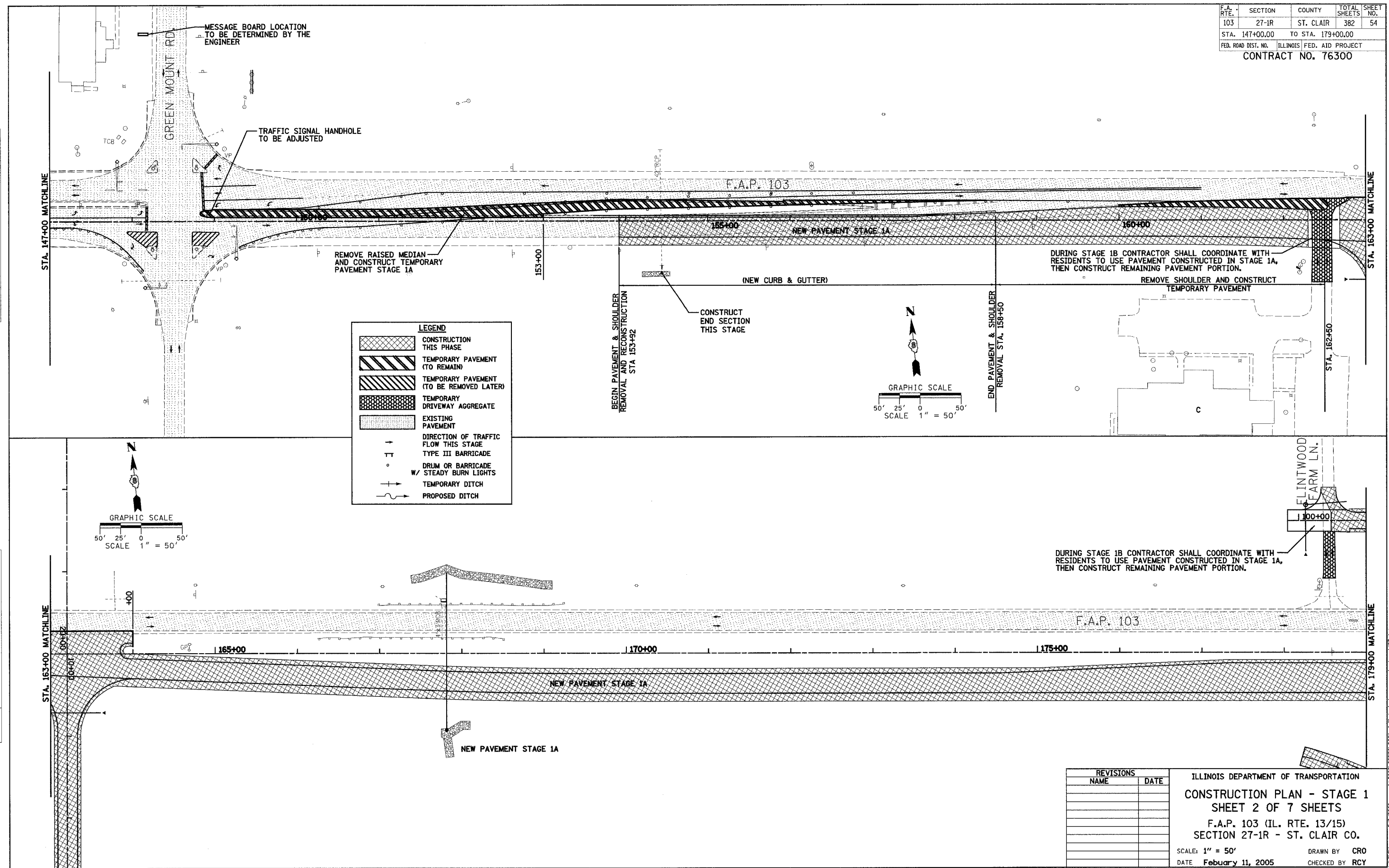


F.A.P. RTE.	SECTION	COUNTY	TOTAL SHEETS	SHEET NO.
103	27-1R	ST. CLAIR	382	54
STA. 147+00.00		TO STA. 179+00.00		
FED. ROAD DIST. NO. ILLINOIS FED. AID PROJECT				
CONTRACT NO. 76300				

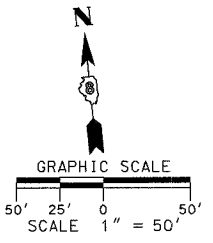
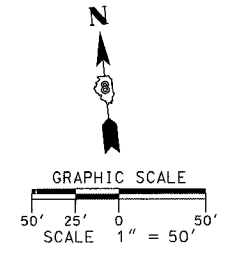
PLAN	DATE
SURVEYED	BY
NOTE BOOK	NO.
ALIGNED CHECKED	DATE
RT. OF WAY CHECKED	DATE
ROAD FILE NAME	

PLAN	DATE
SURVEYED	BY
NOTE BOOK	NO.
ALIGNED CHECKED	DATE
RT. OF WAY CHECKED	DATE
ROAD FILE NAME	



LEGEND

[Cross-hatched pattern]	CONSTRUCTION THIS PHASE
[Diagonal lines /]	TEMPORARY PAVEMENT (TO REMAIN)
[Diagonal lines \]	TEMPORARY PAVEMENT (TO BE REMOVED LATER)
[Stippled pattern]	TEMPORARY DRIVEWAY AGGREGATE
[Dotted pattern]	EXISTING PAVEMENT
[Arrow]	DIRECTION OF TRAFFIC FLOW THIS STAGE
[T-shaped symbol]	TYPE III BARRICADE
[Circle with cross]	DRUM OR BARRICADE W/ STEADY BURN LIGHTS
[Dashed line]	TEMPORARY DITCH
[Solid line]	PROPOSED DITCH



DURING STAGE 1B CONTRACTOR SHALL COORDINATE WITH RESIDENTS TO USE PAVEMENT CONSTRUCTED IN STAGE 1A, THEN CONSTRUCT REMAINING PAVEMENT PORTION.

DURING STAGE 1B CONTRACTOR SHALL COORDINATE WITH RESIDENTS TO USE PAVEMENT CONSTRUCTED IN STAGE 1A, THEN CONSTRUCT REMAINING PAVEMENT PORTION.

REVISIONS	
NAME	DATE

ILLINOIS DEPARTMENT OF TRANSPORTATION
CONSTRUCTION PLAN - STAGE 1
SHEET 2 OF 7 SHEETS
 F.A.P. 103 (IL. RTE. 13/15)
 SECTION 27-1R - ST. CLAIR CO.
 SCALE: 1" = 50'
 DATE: February 11, 2005
 DRAWN BY: CRO
 CHECKED BY: RCY

J:\2002\02058\000\CONTR\CONSTR\stage_constr_1_st Clair\034.dgn 3/9/2005 14:31 PM