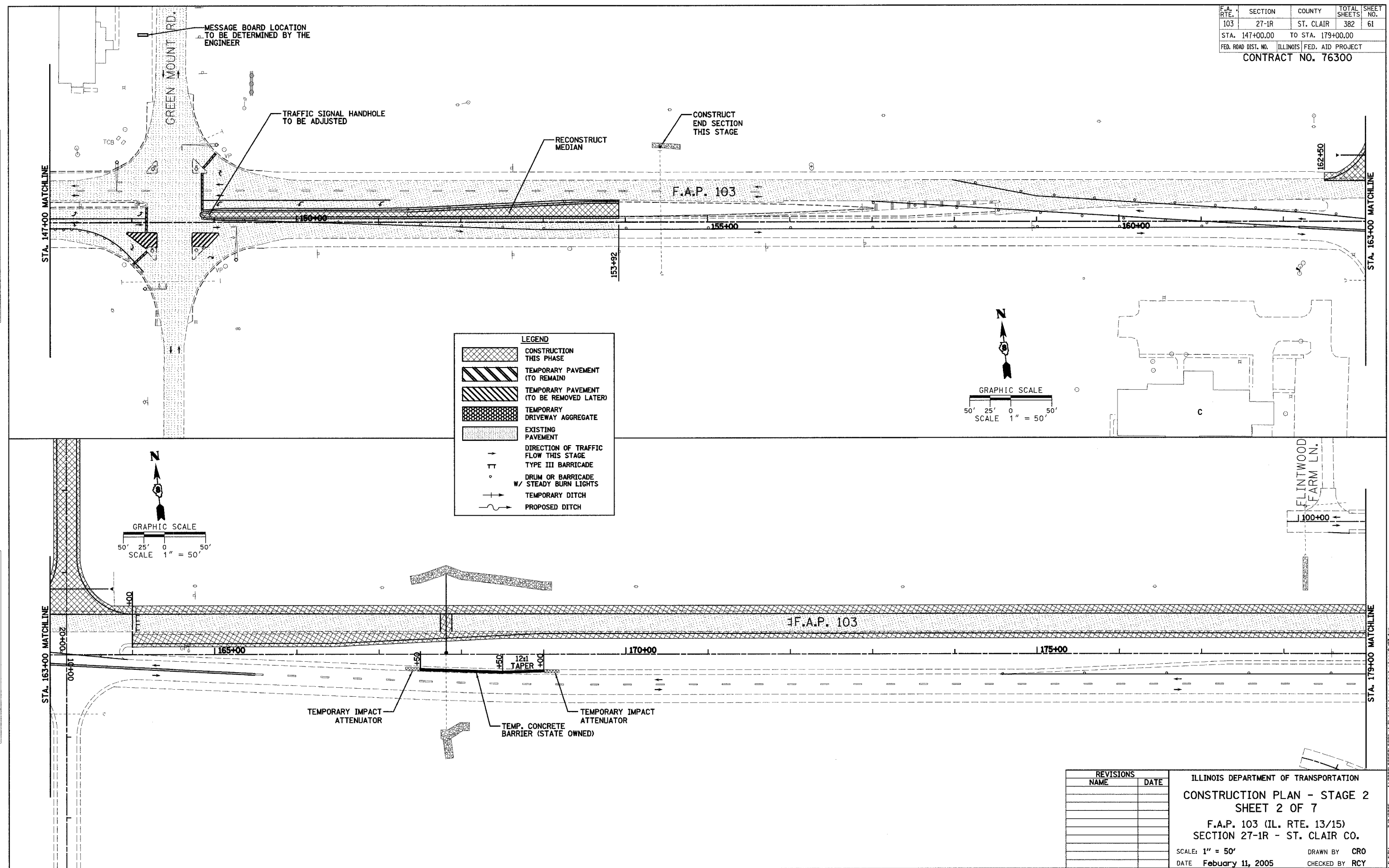


F.A. RTE.	SECTION	COUNTY	TOTAL SHEETS	SHEET NO.
103	27-1R	ST. CLAIR	382	61
STA. 147+00.00		TO STA. 179+00.00		
FED. ROAD DIST. NO.		ILLINOIS FED. AID PROJECT		
CONTRACT NO. 76300				

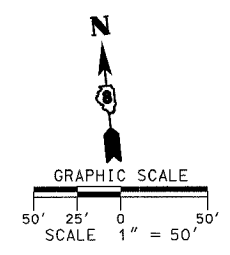
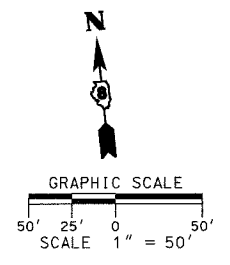
DATE	
BY	
PLANNED	
CHECKED	
NO.	

DATE	
BY	
PLANNED	
CHECKED	
NO.	



LEGEND

- [Cross-hatch pattern] CONSTRUCTION THIS PHASE
- [Diagonal lines /] TEMPORARY PAVEMENT (TO REMAIN)
- [Diagonal lines \] TEMPORARY PAVEMENT (TO BE REMOVED LATER)
- [Grid pattern] TEMPORARY DRIVEWAY AGGREGATE
- [Dotted pattern] EXISTING PAVEMENT
- [Arrow] DIRECTION OF TRAFFIC FLOW THIS STAGE
- [T-bar symbol] TYPE III BARRICADE
- [Circle with dot] DRUM OR BARRICADE W/ STEADY BURN LIGHTS
- [Dashed line with arrow] TEMPORARY DITCH
- [Wavy line with arrow] PROPOSED DITCH



REVISIONS	
NAME	DATE

ILLINOIS DEPARTMENT OF TRANSPORTATION
CONSTRUCTION PLAN - STAGE 2
SHEET 2 OF 7
 F.A.P. 103 (IL. RTE. 13/15)
 SECTION 27-1R - ST. CLAIR CO.
 SCALE: 1" = 50'
 DATE **February 11, 2005** DRAWN BY **CRO** CHECKED BY **RCY**