

F.A. RTE.	SECTION	COUNTY	TOTAL SHEETS	SHEET NO.
103	27-1R	ST. CLAIR	382	62
STA. 179+00.00		TO STA. 211+00.00		
FED. ROAD DIST. NO.		ILLINOIS FED. AID PROJECT		
CONTRACT NO. 76300				

NOTE: CONSTRUCT ACCESS ROAD LT. 1A FROM STA. 105+00 TO STA. 118+00 PRIOR TO REMOVING TURKEY HILL LANE CONNECTION AT STA. 194+25 LT.

DURING STAGE 2B CONTRACTOR SHALL COORDINATE WITH RESIDENTS TO USE PAVEMENT CONSTRUCTED IN STAGE 2A, THEN CONSTRUCT REMAINING PAVEMENT PORTION.

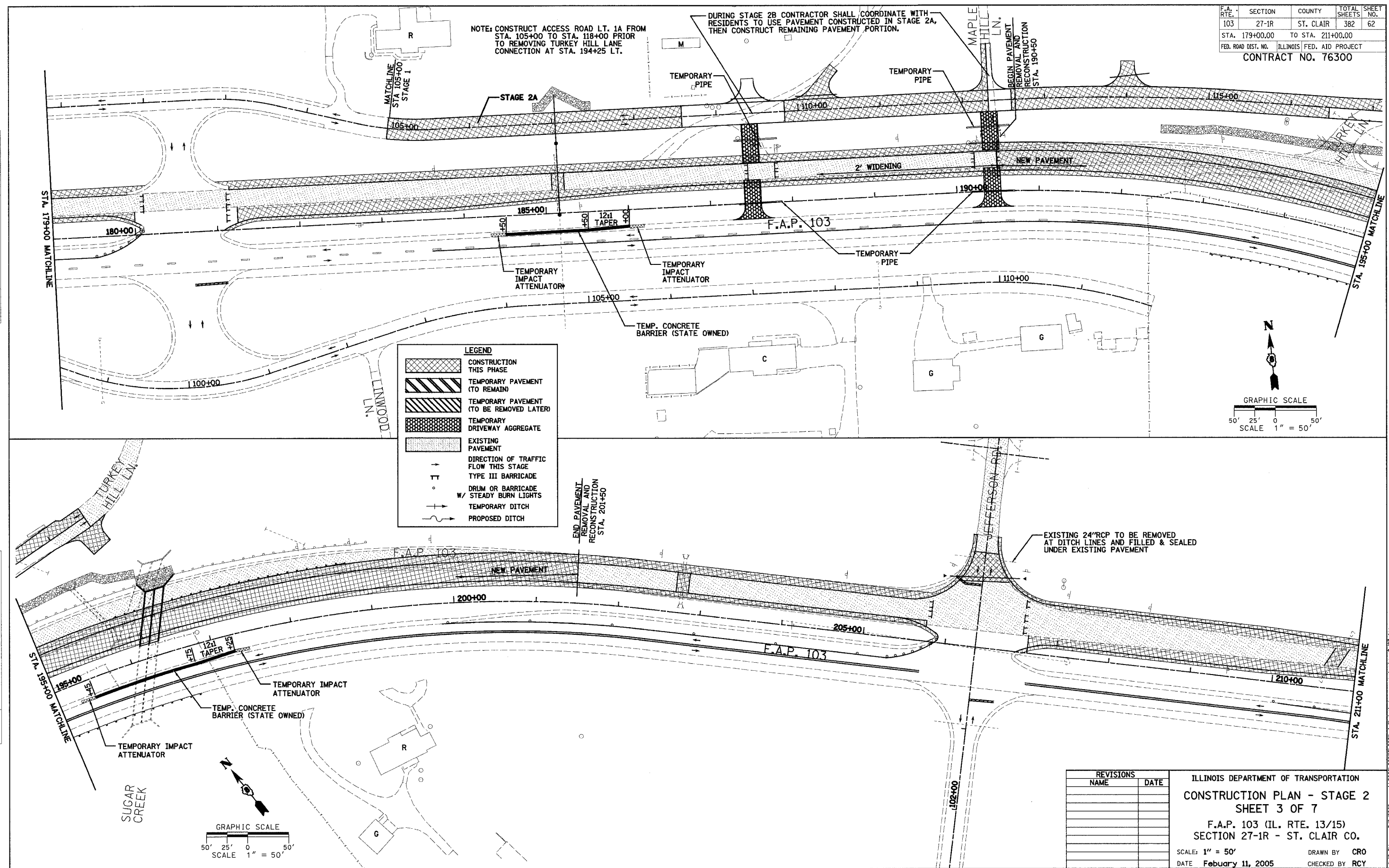
BEGIN PAVEMENT REMOVAL AND RECONSTRUCTION STA. 190+50

END PAVEMENT REMOVAL AND RECONSTRUCTION STA. 201+50

EXISTING 24"RCP TO BE REMOVED AT DITCH LINES AND FILLED & SEALED UNDER EXISTING PAVEMENT

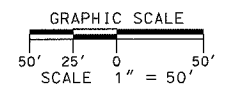
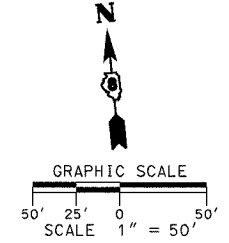
PLAN	DATE
BY	
REVISIONS	
NO. 1	
NO. 2	
NO. 3	
NO. 4	
NO. 5	
NO. 6	
NO. 7	
NO. 8	
NO. 9	
NO. 10	

PLAN	DATE
BY	
REVISIONS	
NO. 1	
NO. 2	
NO. 3	
NO. 4	
NO. 5	
NO. 6	
NO. 7	
NO. 8	
NO. 9	
NO. 10	



LEGEND

[Cross-hatch pattern]	CONSTRUCTION THIS PHASE
[Diagonal lines /]	TEMPORARY PAVEMENT (TO REMAIN)
[Diagonal lines \]	TEMPORARY PAVEMENT (TO BE REMOVED LATER)
[Dotted pattern]	TEMPORARY DRIVEWAY AGGREGATE
[Stippled pattern]	EXISTING PAVEMENT
[Arrow]	DIRECTION OF TRAFFIC FLOW THIS STAGE
[T-shaped symbol]	TYPE III BARRICADE
[Circle with cross]	DRUM OR BARRICADE W/ STEADY BURN LIGHTS
[Dashed line]	TEMPORARY DITCH
[Solid line]	PROPOSED DITCH



REVISIONS	NAME	DATE

ILLINOIS DEPARTMENT OF TRANSPORTATION
CONSTRUCTION PLAN - STAGE 2
SHEET 3 OF 7
 F.A.P. 103 (IL. RTE. 13/15)
 SECTION 27-1R - ST. CLAIR CO.
 SCALE: 1" = 50'
 DATE: February 11, 2005
 DRAWN BY: CRO
 CHECKED BY: RCY

J:\2002\022015R\0001\CIVIL\gpn\stage2_const_sheets_03.dwg 3/9/2005 14:42 PM