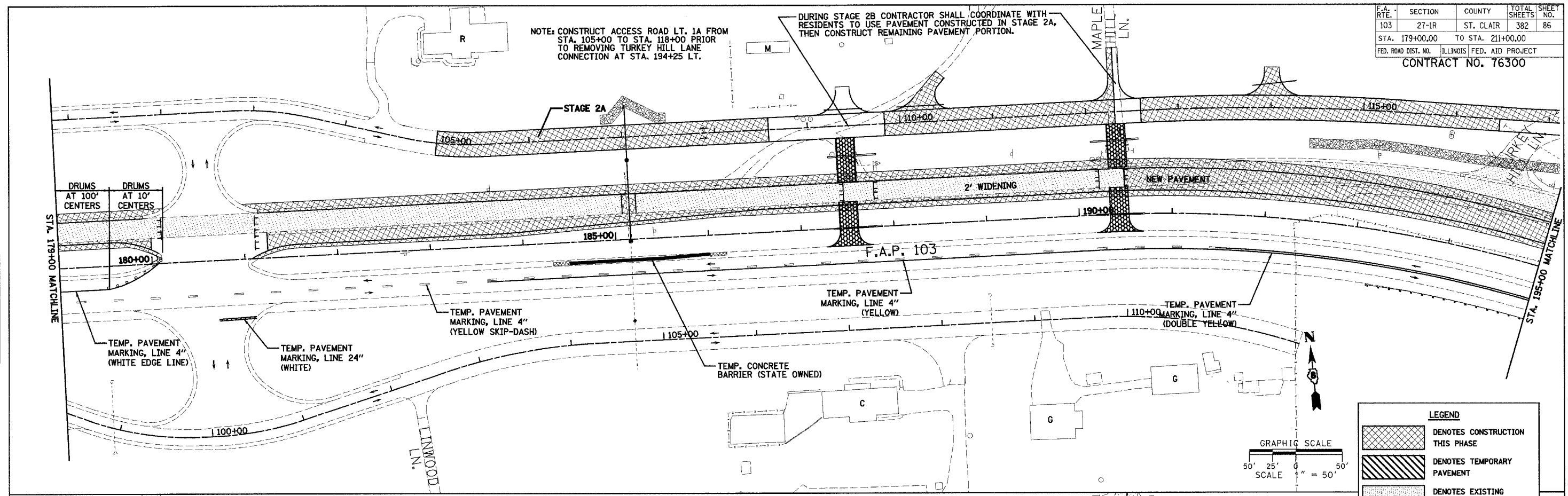


F.A. RTE.	SECTION	COUNTY	TOTAL SHEETS	SHEET NO.
103	27-1R	ST. CLAIR	382	86
STA. 179+00.00		TO STA. 211+00.00		
FED. ROAD DIST. NO. ILLINOIS FED. AID PROJECT				
CONTRACT NO. 76300				

NOTE: CONSTRUCT ACCESS ROAD LT. 1A FROM STA. 105+00 TO STA. 118+00 PRIOR TO REMOVING TURKEY HILL LANE CONNECTION AT STA. 194+25 LT.

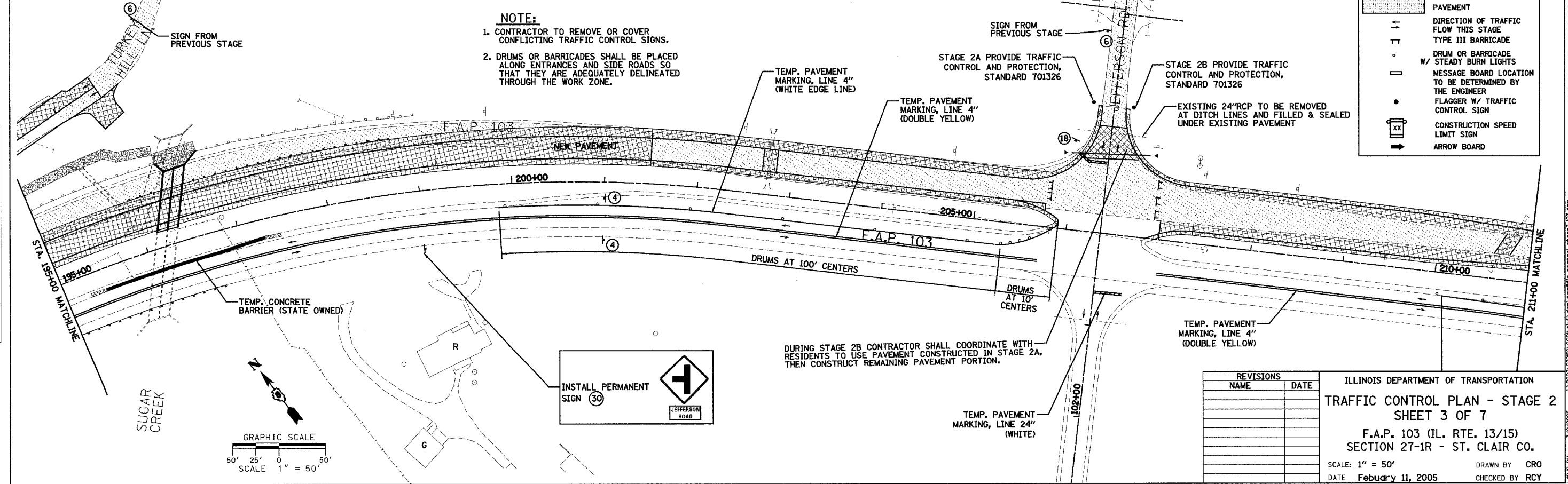
DURING STAGE 2B CONTRACTOR SHALL COORDINATE WITH RESIDENTS TO USE PAVEMENT CONSTRUCTED IN STAGE 2A, THEN CONSTRUCT REMAINING PAVEMENT PORTION.



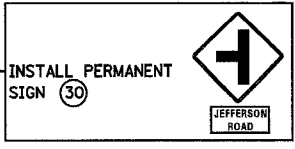
LEGEND

[Cross-hatched pattern]	DENOTES CONSTRUCTION THIS PHASE
[Diagonal hatched pattern]	DENOTES TEMPORARY PAVEMENT
[Stippled pattern]	DENOTES EXISTING PAVEMENT
[Dashed line]	DIRECTION OF TRAFFIC FLOW THIS STAGE
[Vertical line with cross-ticks]	TYPE III BARRICADE
[Circle with dot]	DRUM OR BARRICADE W/ STEADY BURN LIGHTS
[Square]	MESSAGE BOARD LOCATION TO BE DETERMINED BY THE ENGINEER
[Circle with 'X']	FLAGGER W/ TRAFFIC CONTROL SIGN
[Square with 'XX']	CONSTRUCTION SPEED LIMIT SIGN
[Arrow]	ARROW BOARD

- NOTE:**
- CONTRACTOR TO REMOVE OR COVER CONFLICTING TRAFFIC CONTROL SIGNS.
 - DRUMS OR BARRICADES SHALL BE PLACED ALONG ENTRANCES AND SIDE ROADS SO THAT THEY ARE ADEQUATELY DELINEATED THROUGH THE WORK ZONE.



DURING STAGE 2B CONTRACTOR SHALL COORDINATE WITH RESIDENTS TO USE PAVEMENT CONSTRUCTED IN STAGE 2A, THEN CONSTRUCT REMAINING PAVEMENT PORTION.



REVISIONS	
NAME	DATE

ILLINOIS DEPARTMENT OF TRANSPORTATION
TRAFFIC CONTROL PLAN - STAGE 2
 SHEET 3 OF 7
 F.A.P. 103 (IL. RTE. 13/15)
 SECTION 27-1R - ST. CLAIR CO.
 SCALE: 1" = 50' DRAWN BY CRO
 DATE February 11, 2005 CHECKED BY RCY

DATE	BY	REVISIONS

DATE	BY	REVISIONS

J:\2005\02058\000\01\IND\DRG\TRC\TRC_CONTROL_STAGE2_103.dgn 3/9/2005 4:28:10 PM