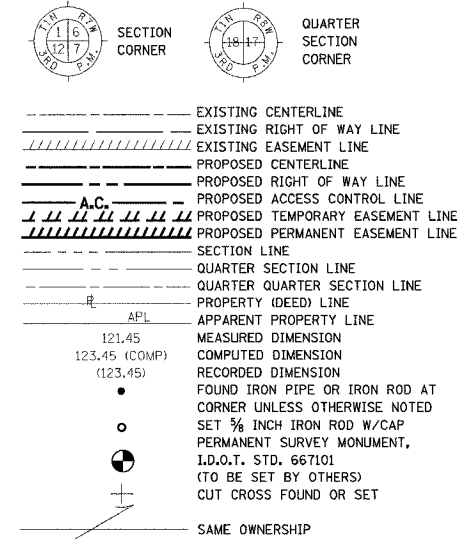


SECTION	COUNTY	TOTAL SHEETS	SHEET NO.
103	ST. CLAIR	382	131
STA. 196+90.60 TO STA. 205+64.86			
FED. ROAD DIST. NO.	ILLINOIS	FED. AID PROJECT	

LEGEND



- ▲ SET CONCRETE SURVEY CONTROL MONUMENT
- STAKING OF PROPOSED RIGHT OF WAY. SET 3/8 INCH METAL ROD WITH DIVISION OF HIGHWAY SURVEY MARKER TO MONUMENT THE POSITION SHOWN. IDENTIFIED BY INSCRIPTION DATA AND SURVEYORS REGISTRATION NUMBER.
- STAKING OF PROPOSED RIGHT OF WAY IN CULTIVATED AREAS. SET 3/8 INCH METAL ROD WITH DIVISION OF HIGHWAY SURVEY MARKER 20 INCHES BELOW GROUND SURFACE TO MONUMENT THE POSITION SHOWN. IDENTIFIED BY INSCRIPTION DATA AND SURVEYORS REGISTRATION NUMBER.

STATE OF ILLINOIS)
) SS
 COUNTY OF)

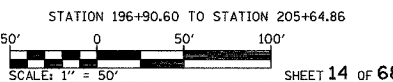
THIS IS TO CERTIFY THAT I, RONALD G. BRIGHT AN ILLINOIS PROFESSIONAL LAND SURVEYOR, SURVEYED THE PLAT OF HIGHWAYS SHOWN HEREON IN U.S. SURVEYS NO. 382, 389, AND 772 AND IN SECTIONS 6, 7, 18, 19, 20, 29 AND 30, TOWNSHIP 1 SOUTH, RANGE 7 WEST, OF THE THIRD PRINCIPAL MERIDIAN, ST. CLAIR COUNTY, ILLINOIS, THAT THE SURVEY IS COMPLETE AS SHOWN TO THE BEST OF MY KNOWLEDGE AND BELIEF, THAT THE PLAT REPRESENTS SAID SURVEY, THAT ALL MONUMENTS FOUND AND ESTABLISHED ARE OF PERMANENT QUALITY AND OCCUPY THE POSITIONS SHOWN THEREON AND THAT THE MONUMENTS ARE SUFFICIENT TO ENABLE THE SURVEY TO BE RETRACED. MADE FOR THE DEPARTMENT OF TRANSPORTATION, STATE OF ILLINOIS.

DATED _____

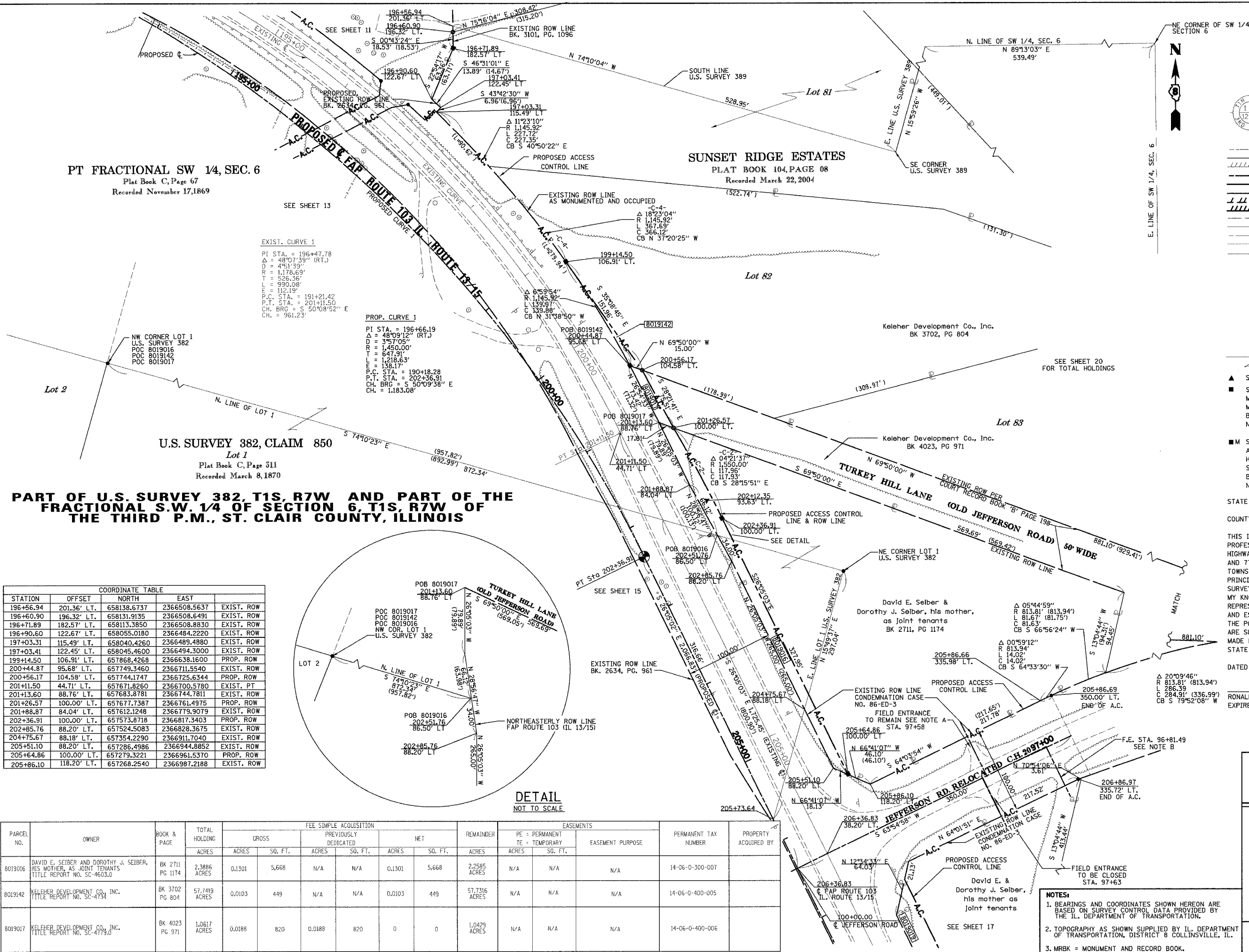
RONALD G. BRIGHT, PLS #3157
 EXPIRES NOVEMBER 30, 2006

KdG KUHLMANN DESIGN GROUP, INC.
 15 E. WASHINGTON STREET
 BELLEVILLE, ILLINOIS 62220
 (618) 234-8898

ILLINOIS DEPARTMENT OF TRANSPORTATION
PLAT OF HIGHWAYS
 FAP ROUTE 103 (IL RTE. 13/15)
 SECTION 27-1R
 ST. CLAIR COUNTY
 JOB NO. R-98-019-00



ILLINOIS DEPARTMENT OF TRANSPORTATION
 DIVISION OF HIGHWAYS/DISTRICT 8
 1102 EASTPORT PLAZA DRIVE
 COLLINGSVILLE, ILLINOIS 62234-6198



PT FRACTIONAL SW 1/4, SEC. 6
 Plat Book C, Page 67
 Recorded November 17, 1869

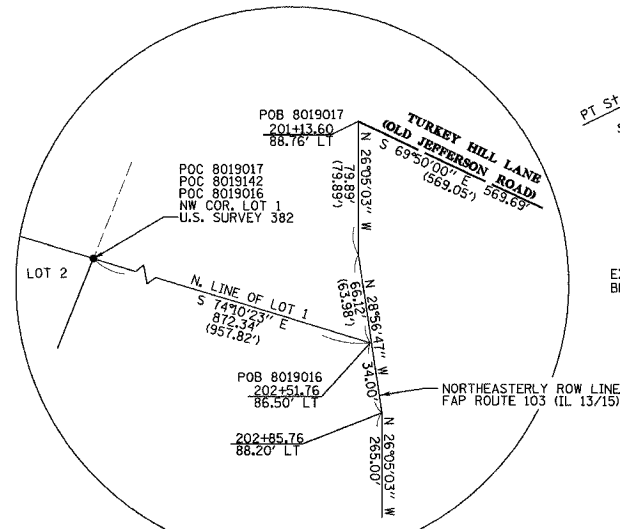
EXIST. CURVE 1
 P.I. STA. = 196+47.78
 Δ = 48°07'39" (RT.)
 D = 451.33'
 R = 1,178.69'
 T = 526.36'
 L = 990.08'
 E = 112.19'
 P.C. STA. = 191+21.42
 P.T. STA. = 201+11.50
 CH. BRG = S 50°08'52" E
 CH. = 961.23'

PROP. CURVE 1
 P.I. STA. = 196+66.19
 Δ = 48°09'12" (RT.)
 D = 357.05'
 R = 1,450.00'
 T = 647.91'
 L = 1,218.63'
 E = 138.17'
 P.C. STA. = 190+18.28
 P.T. STA. = 202+36.91
 CH. BRG = S 50°09'38" E
 CH. = 1,183.08'

U.S. SURVEY 382, CLAIM 850
 Lot 1
 Plat Book C, Page 511
 Recorded March 8, 1870

PART OF U.S. SURVEY 382, T1S, R7W AND PART OF THE FRACTIONAL S.W. 1/4 OF SECTION 6, T1S, R7W OF THE THIRD P.M., ST. CLAIR COUNTY, ILLINOIS

STATION	OFFSET	NORTH	EAST	EXIST. ROW
196+56.94	201.36' LT.	658138.6737	2366508.5637	EXIST. ROW
196+60.90	196.32' LT.	658131.9135	2366508.6491	EXIST. ROW
196+71.89	182.57' LT.	658113.3850	2366508.8830	EXIST. ROW
196+90.60	122.67' LT.	658055.0180	2366484.2220	EXIST. ROW
197+03.31	115.49' LT.	658040.4260	2366489.4880	EXIST. ROW
197+03.41	122.45' LT.	658045.4600	2366494.3000	EXIST. ROW
199+14.50	106.91' LT.	657868.4268	2366638.1600	PROP. ROW
200+44.87	95.68' LT.	657749.3460	2366711.5540	EXIST. ROW
200+56.17	104.58' LT.	657744.1747	2366725.6344	PROP. ROW
201+11.50	44.71' LT.	657671.8260	2366700.5780	EXIST. PT
201+13.60	88.76' LT.	657683.8781	2366744.7811	EXIST. ROW
201+26.57	100.00' LT.	657677.7387	2366761.4975	PROP. ROW
201+88.87	84.04' LT.	657612.1248	2366779.9079	EXIST. ROW
202+36.91	100.00' LT.	657573.8718	2366817.3403	PROP. ROW
202+85.76	88.20' LT.	657524.5083	2366828.3675	EXIST. ROW
204+75.67	88.18' LT.	657354.2290	2366911.7040	EXIST. ROW
205+51.10	88.20' LT.	657286.4986	2366944.8852	EXIST. ROW
205+64.86	100.00' LT.	657279.3221	2366961.5370	PROP. ROW
205+86.10	118.20' LT.	657268.2540	2366987.2188	EXIST. ROW



DETAIL
 NOT TO SCALE

PARCEL NO.	OWNER	BOOK & PAGE	TOTAL HOLDING ACRES	FEE SIMPLE ACQUISITION				REMAINDER ACRES	EASEMENTS		PERMANENT TAX NUMBER	PROPERTY ACQUIRED BY	
				GROSS ACRES	SO. FT.	PREVIOUSLY DEDICATED ACRES	SO. FT.		NET ACRES	SO. FT.			ACRES
8019016	DAVID E. SEIBER AND DOROTHY J. SEIBER, HIS MOTHER, AS JOINT TENANTS TITLE REPORT NO. SC-4603.0	BK 2711 PG 1174	2.3886	0.1301	5,668	N/A	N/A	0.1301	5,668	N/A	N/A	N/A	14-06-0-300-007
8019142	KELEHER DEVELOPMENT CO., INC. TITLE REPORT NO. SC-4734	BK 3702 PG 804	57.7419	0.0103	449	N/A	N/A	0.0103	449	N/A	N/A	N/A	14-06-0-400-005
8019017	KELEHER DEVELOPMENT CO., INC. TITLE REPORT NO. SC-4779.0	BK 4023 PG 971	1,0617	0.0188	820	0.0188	820	0	0	1,0429	N/A	N/A	14-06-0-400-006

- NOTES:**
- BEARINGS AND COORDINATES SHOWN HEREON ARE BASED ON SURVEY CONTROL DATA PROVIDED BY THE IL. DEPARTMENT OF TRANSPORTATION.
 - TOPOGRAPHY AS SHOWN SUPPLIED BY IL. DEPARTMENT OF TRANSPORTATION, DISTRICT 8 COLLINGSVILLE, IL.
 - MRBK = MONUMENT AND RECORD BOOK.