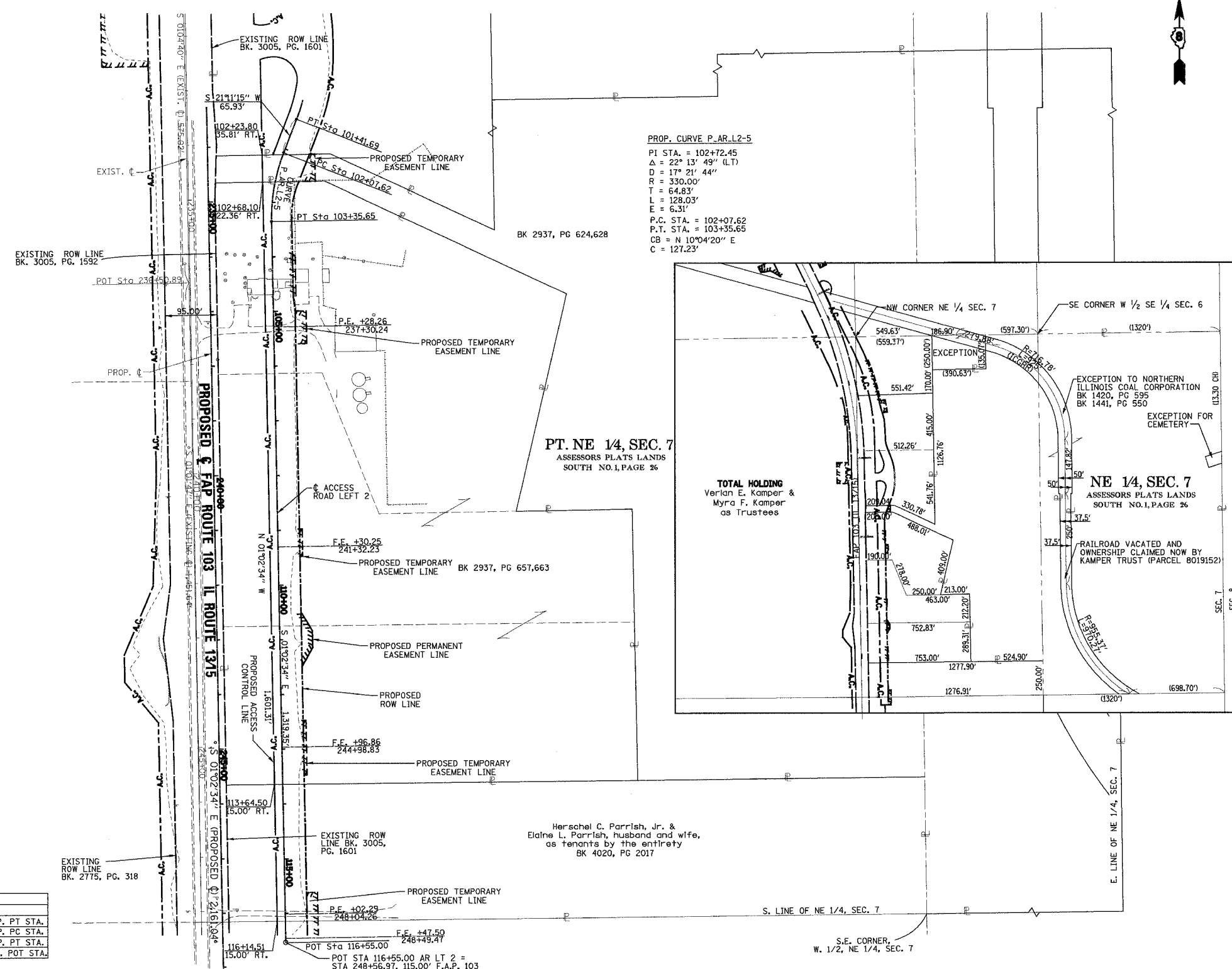
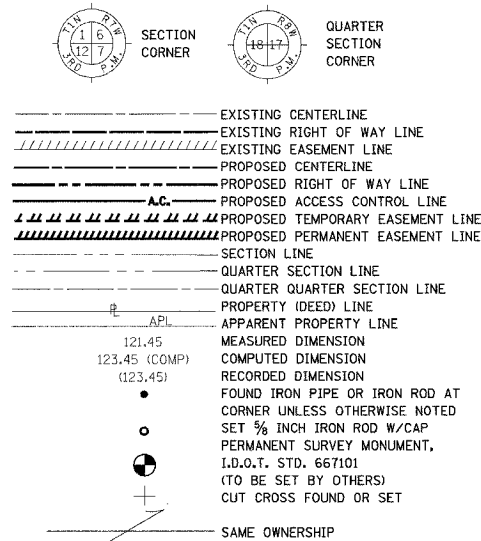


**PART OF THE NE 1/4 OF SECTION 7, T1S, R7W  
OF THE THIRD P.M., ST. CLAIR COUNTY, ILLINOIS**

FAP ROUTE	SECTION	COUNTY	TOTAL SHEETS	SHEET NO
103	27-1R	ST. CLAIR	382	143
STA. 234+16.01		TO STA. 248+16.89		
FED. ROAD DIST. NO.	ILLINOIS	FED. AID PROJECT		

**LEGEND**



PROP. CURVE P.AR-L2-5  
 PI STA. = 102+72.45  
 Δ = 22° 13' 49" (LT)  
 D = 17° 21' 44"  
 R = 330.00'  
 T = 64.83'  
 L = 128.03'  
 E = 6.31'  
 P.C. STA. = 102+07.62  
 P.T. STA. = 103+35.65  
 CB = N 10°04'20" E  
 C = 127.23'

COORDINATE TABLE

STATION	OFFSET	NORTH	EAST	
101+41.69	0	654651.2060	2367955.7150	PROP. PT STA.
102+07.62	0	654589.7306	2367931.8860	PROP. PC STA.
103+35.65	0	654464.4570	2367909.6340	PROP. PT STA.
116+55.00	0	653145.3280	2367933.6440	PROP. POT STA.

**NOTES:**  
 1. BEARINGS AND COORDINATES SHOWN HEREON ARE BASED ON SURVEY CONTROL DATA PROVIDED BY THE IL. DEPARTMENT OF TRANSPORTATION.  
 2. TOPOGRAPHY AS SHOWN SUPPLIED BY IL. DEPARTMENT OF TRANSPORTATION, DISTRICT 8 COLLINSVILLE, IL.

- ▲ SET CONCRETE SURVEY CONTROL MONUMENT
- STAKING OF PROPOSED RIGHT OF WAY. SET 3/8 INCH METAL ROD WITH DIVISION OF HIGHWAY SURVEY MARKER TO MONUMENT THE POSITION SHOWN. IDENTIFIED BY INSCRIPTION DATA AND SURVEYORS REGISTRATION NUMBER.
- M STAKING OF PROPOSED RIGHT OF WAY IN CULTIVATED AREAS. SET 3/8 INCH METAL ROD WITH DIVISION OF HIGHWAY SURVEY MARKER 20 INCHES BELOW GROUND SURFACE TO MONUMENT THE POSITION SHOWN. IDENTIFIED BY INSCRIPTION DATA AND SURVEYORS REGISTRATION NUMBER.

STATE OF ILLINOIS )  
 ) SS  
 COUNTY OF )  
 THIS IS TO CERTIFY THAT I, RONALD G. BRIGHT AN ILLINOIS PROFESSIONAL LAND SURVEYOR, SURVEYED THE PLAT OF HIGHWAYS SHOWN HEREON IN U.S. SURVEYS NO. 382, 389, AND 772 AND IN SECTIONS 6, 7, 18, 19, 20, 29, AND 30, TOWNSHIP 1 SOUTH, RANGE 7 WEST, OF THE THIRD PRINCIPAL MERIDIAN, ST. CLAIR COUNTY, ILLINOIS, THAT THE SURVEY IS COMPLETE AS SHOWN TO THE BEST OF MY KNOWLEDGE AND BELIEF, THAT THE PLAT REPRESENTS SAID SURVEY, THAT ALL MONUMENTS FOUND AND ESTABLISHED ARE OF PERMANENT QUALITY AND OCCUPY THE POSITIONS SHOWN THEREON AND THAT THE MONUMENTS ARE SUFFICIENT TO ENABLE THE SURVEY TO BE RETRACED, MADE FOR THE DEPARTMENT OF TRANSPORTATION, STATE OF ILLINOIS.

DATED \_\_\_\_\_  
 RONALD G. BRIGHT, PLS #3157  
 EXPIRES NOVEMBER 30, 2006

**kdg** KUHLMANN DESIGN GROUP, INC.  
 15 E. WASHINGTON STREET  
 BELLEVILLE, ILLINOIS 62220  
 (618) 234-8898

ILLINOIS DEPARTMENT OF TRANSPORTATION  
**PLAT OF HIGHWAYS**  
 FAP ROUTE 103 (IL RTE. 13/15)  
 SECTION 27-1R  
 ST. CLAIR COUNTY  
 JOB NO. R-98-019-00  
 STATION 234+16.01 TO STATION 248+16.89

100' 0 100' 200'  
 SCALE 1" = 100'

ILLINOIS DEPARTMENT OF TRANSPORTATION  
 DIVISION OF HIGHWAYS-DISTRICT 8  
 1102 EASTPORT PLAZA DRIVE  
 COLLINSVILLE, ILLINOIS 62234-6198

**SHEET 26 OF 68**

3/9/2005 6:16:13 PM J:\2002\020158\0001\civil\gdg\m\pl\_103\_26.dgn